

NUMBER OF COPIES RECEIVED	
DISTRIBUTION	
SANTA FE	
FILE	
U.S.G.S.	
LAND OFFICE	
TRANSPORTER	OIL
	GAS
PRODUCTION OFFICE	
OPERATOR	

NEW MEXICO OIL CONSERVATION COMMISSION
Santa Fe, New Mexico

Form C-101
 Revised (12/1/55)

NOTICE OF INTENTION TO DRILL

HOBBS OFFICE O. C. C.

Notice must be given to the District Office of the Oil Conservation Commission and approval obtained before drilling or recompletion begins. If changes in the proposed plan are considered advisable, a copy of this notice showing such changes will be returned to the sender. Submit this notice in **QUINTUPLICATE**. One copy will be returned following approval. See additional instructions in Rules and Regulations of the Commission. If State Land submit 6 Copies Attach Form C- 128 in triplicate to first 3 copies of form C-101

812 1st Nat'l. Bk. Bldg. Midland, Texas 12-4-64
 (Place) (Date)

OIL CONSERVATION COMMISSION
 SANTA FE, NEW MEXICO

Gentlemen:

You are hereby notified that it is our intention to commence the Drilling of a well to be known as Cherry Brothers and Cabot Corp.

Austin State, Well No. 1, in E The well is
 (Lease) (Unit)

located 1980 feet from the North line and 1980 feet from the West line of Section 19, T. 14 S, R. 36E, NMPM.

(GIVE LOCATION FROM SECTION LINE) Austin (Mississippian) Pool, Lea County

If State Land the Oil and Gas Lease is No. E-9043

If patented land the owner is.....

Address.....

We propose to drill well with drilling equipment as follows: Rotary

The status of plugging bond is Approved and filed with the Oil & Gas Conservation Commission in Santa Fe, N. M.

Drilling Contractor Cactus Drilling Corporation

We intend to complete this well in the Devonian and/or Mississippian formation at an approximate depth of 14,700 feet.

CASING PROGRAM

We propose to use the following strings of Casing and to cement them as indicated:

Size of Hole	Size of Casing	Weight per Foot	New or Second Hand	Depth	Sacks Cement
17 1/2"	13 3/8	48#	New	400	* 350 SX
11"	8 5/8	32#	New	4650	**1400 SX
7 7/8"	5 1/2	17# & 15.5#	New	19700	1000

If changes in the above plans become advisable we will notify you immediately.

ADDITIONAL INFORMATION (If recompletion give full details of proposed plan of work.)

- * Cement will be circulated to surface
- ** Cement will be brought to the base of the salt section

Approved....., 19.....
 Except as follows:

[Signature]
 OIL CONSERVATION COMMISSION
 BY.....

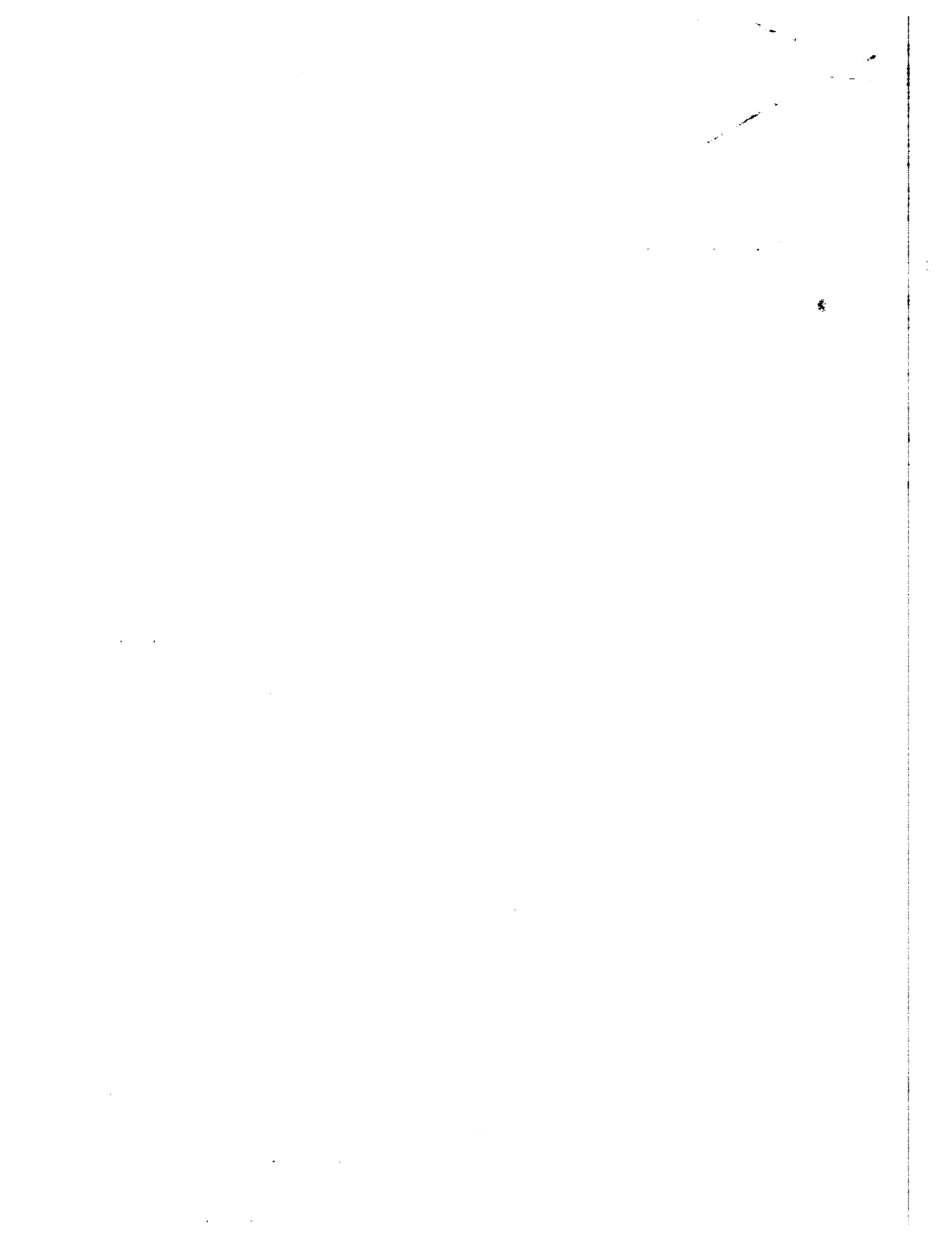
Sincerely yours,

Cherry Brothers and Cabot Corp.
 (Company or Operator)

By V. F. Vanech

Position Prod. Supt.
 Send Communications regarding well to

Name Cherry Brothers
 Address 812 1st Nat'l. Bk. Bldg. Midland,



HOBBS OFFICE U. C. C.
FORM C-12B
Revised 5/1/57

NEW MEXICO OIL CONSERVATION COMMISSION

WELL LOCATION AND ACREAGE DEDICATION

PLAT 3 38 PM '63

SEE INSTRUCTIONS FOR COMPLETING THIS FORM ON THE REVERSE SIDE

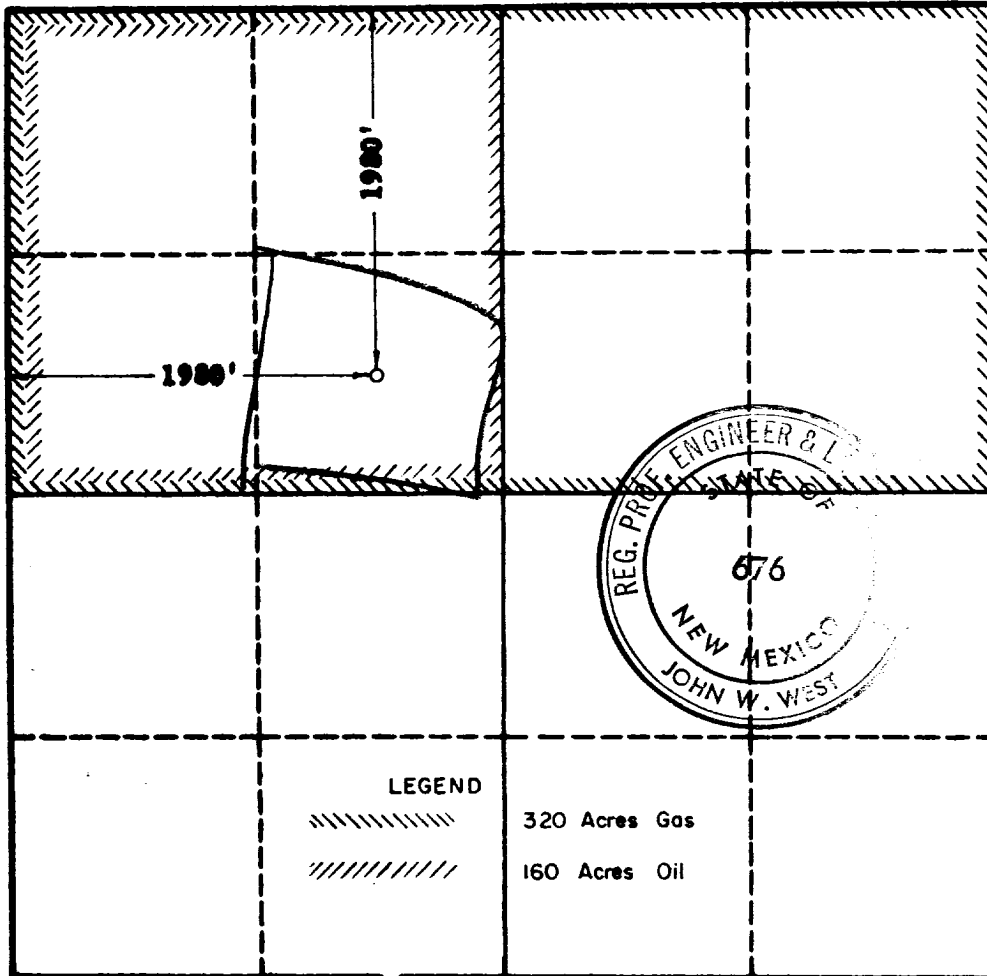
SECTION A

Operator CHERRY BROTHERS & CABOT CORP.		Lease AUSTIN STATE		Well No. 1
Unit Letter F	Section 19	Township 14 SOUTH	Range 36 EAST	County LEA
Actual Footage Location of Well: 1980 feet from the NORTH line and 1980 feet from the WEST line				
Ground Level Elev.	Producing Formation MISSISSIPPIAN (GAS)		Pool AUSTIN	Dedicated Acreage: 40

1. Is the Operator the only owner in the dedicated acreage outlined on the plat below? YES _____ NO X. ("Owner" means the person who has the right to drill into and to produce from any pool and to appropriate the production either for himself or for himself and another. (65-3-29 (e) NMSA 1955 Comp.)
2. If the answer to question one is "no," have the interests of all the owners been consolidated by communitization agreement or otherwise? YES X NO _____. If answer is "yes," Type of Consolidation ASSIGNMENT AND OPERATING AGREEMENT
3. If the answer to question two is "no," list all the owners and their respective interests below:

Owner	Land Description

SECTION B



CERTIFICATION

I hereby certify that the information in SECTION A above is true and complete to the best of my knowledge and belief.

Name <i>V. F. Varicek</i>
Position Prod. Supt.
Company Cherry Brothers
Date December 4, 1963

I hereby certify that the well location shown on the plat in SECTION B was plotted from field notes of actual surveys made by me or under my supervision, and that the same is true and correct to the best of my knowledge and belief.

Date Surveyed 12-4-1963
Registered Professional Engineer and/or Land Surveyor, JOHN W. WEST
<i>John W. West</i>
Certificate No. N. M. - P. E. & L. S. NO. 676



