

NEW MEXICO OIL CONSERVATION COMMISSION
WELL LOCATION AND ACREAGE DEDICATION PLAT

Form O-10,
Supersedes O-12B
Effective 1-1-55

All distances must be from the outer boundaries of the Section

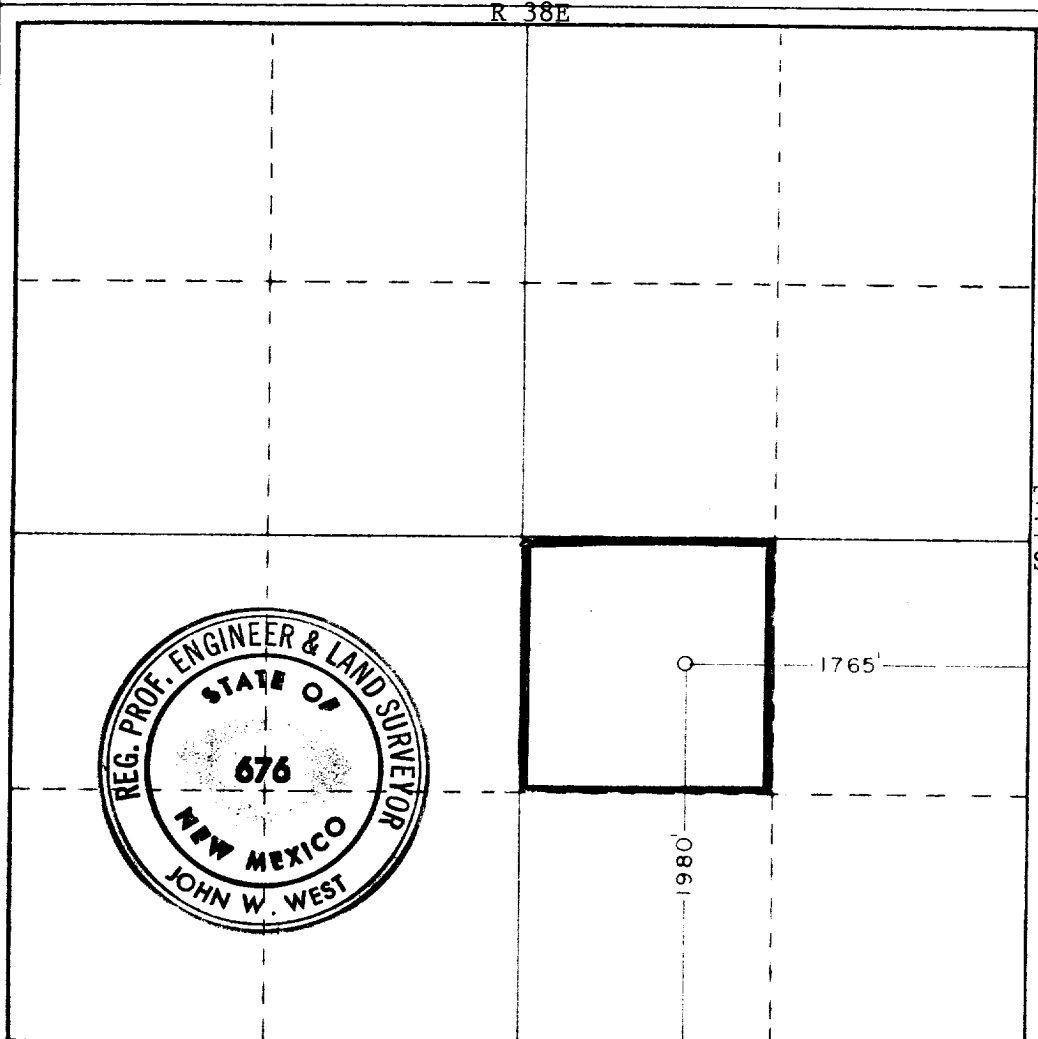
Operator Marathon Oil Co.		Lease Delmont L. Hatfield		Well No. 1
Unit Letter J	Section 23	Township 16South	Range 38East	County Lea
Actual Footage Location of Well: 1980 feet from the South line and 1765 feet from the East line				
Ground Level Elev. 3695.8	Producing Formation Drinkard	Pool Wildcat	Dedicated Acreage 40 Acres	

1. Outline the acreage dedicated to the subject well by colored pencil or hachure marks on the plat below.
2. If more than one lease is dedicated to the well, outline each and identify the ownership thereof (both as to working interest and royalty).
3. If more than one lease of different ownership is dedicated to the well, have the interests of all owners been consolidated by communitization, unitization, force-pooling, etc?

Yes No If answer is "yes," type of consolidation _____

If answer is "no," list the owners and tract descriptions which have actually been consolidated. (Use reverse side of this form if necessary.) _____

No allowable will be assigned to the well until all interests have been consolidated (by communitization, unitization, forced-pooling, or otherwise) or until a non-standard unit, eliminating such interests, has been approved by the Commission.



CERTIFICATION

I hereby certify that the information contained herein is true and complete to the best of my knowledge and belief.

Ralph M. DePauw
Name

Ralph M. DePauw
Position

Production Engineer
Company

Marathon Oil Co.
Date

7-9-81

I hereby certify that the well location shown on this plat was plotted from field notes of actual surveys made by me or under my supervision, and that the same is true and correct to the best of my knowledge and belief.

Date Surveyed
June 26, 1981

Registered Professional Engineer and/or Land Surveyor

John W. West

Certificate No.	JOHN W. WEST	676
	PATRICK A. ROMERO	6663
	Ronald J. Eidson	3239

