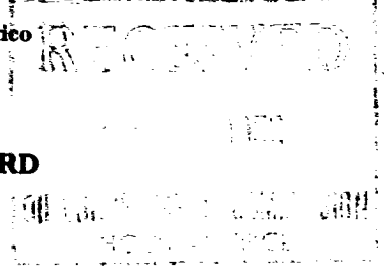


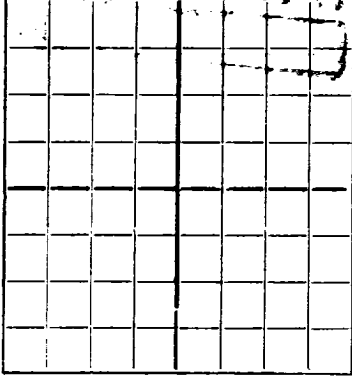
NEW MEXICO OIL CONSERVATION COMMISSION

Santa Fe, New Mexico



WELL RECORD

Mail to Oil Conservation Commission, Santa Fe, New Mexico, or its proper agent not more than twenty days after completion of well. Follow instructions in the Rules and Regulations of the Commission. Indicate questionable data by following it with (?). SUBMIT IN TRIPLICATE.



AREA 640 ACRES
LOCATE WELL CORRECTLY

Sweet Oil Well Equipment, Inc.

McKinley "B"

Company or Operator Sweet Oil Well Equipment, Inc. Lease McKinley "B"
Well No. 2 in Unit H of Sec. 20, T. 18S

R. 38E, N. M. P. M., Hobbs Field, Lea County.

Well is 2310 feet south of the North line and 990 feet west of the East line of Section 20

If State land the oil and gas lease is No. Assignment No.

If patented land the owner is Wm. Jackson, Address Artesia, New Mexico

If Government land the permittee is, Address

The Lessee is Sweet Oil Well Equipment, Inc., Address Box 1115, Hobbs, New Mexico

Drilling commenced 4-18-19 52 Drilling was completed 5-9-19 52

Name of drilling contractor Baker & Taylor, Address Amarillo, Texas

Elevation above sea level at top of casing 3650 D.F. feet.

The information given is to be kept confidential until 19

OIL SANDS OR ZONES

No. 1, from 4252 to 4256 No. 4, from to

No. 2, from to No. 5, from to

No. 3, from to No. 6, from to

IMPORTANT WATER SANDS

Include data on rate of water inflow and elevation to which water rose in hole.

No. 1, from to feet.

No. 2, from to feet.

No. 3, from to feet.

No. 4, from to feet.

CASING RECORD

SIZE	WEIGHT PER FOOT	THREADS PER INCH	MAKE	AMOUNT	KIND OF SHOE	CUT & FILLED FROM	PERFORATED FROM TO	PURPOSE
8 5/8"	28*		(Used)	302'				
5 1/2"	15.5*		(New)	4278'			4252 4256	

MUDDING AND CEMENTING RECORD

SIZE OF HOLE	SIZE OF CASING	WHERE SET	NO. SACKS OF CEMENT	METHOD USED	MUD GRAVITY	AMOUNT OF MUD USED
11"	8 5/8"	302'	150 sacks	circulated to surface		
6 3/4"	5 1/2"	4278'	200 sacks	with 23% Mellite		

PLUGS AND ADAPTERS

Heaving plug—Material Length Depth Set

Adapters—Material Size

RECORD OF SHOOTING OR CHEMICAL TREATMENT

SIZE	SHELL USED	EXPLOSIVE OR CHEMICAL USED	QUANTITY	DATE	DEPTH SHOT OR TREATED	DEPTH CLEANED OUT
		500 gallons acid		5-11-52	4252-56'	thru perforations

Results of shooting or chemical treatment After acid, the well pumped at the rate of 100 barrels fluid per day, 30% water

RECORD OF DRILL-STEM AND SPECIAL TESTS

SEE RECORD OF DRILL STEM TESTS ON REVERSE SIDE OF THIS SHEET

If drill-stem or other special tests or deviation surveys were made, submit report on separate sheet and attach hereto.

TOOLS USED

Rotary tools were used from 0 feet to 4414 feet, and from feet to feet.

Cable tools were used from feet to feet, and from feet to feet.

PRODUCTION

Put to producing 5-12-19 52

The production of the first 24 hours was 100 barrels of fluid of which 70% was oil; % emulsion; 30% water; and % sediment. Gravity, Be.

If gas well, cu. ft. per 24 hours Gallons gasoline per 1,000 cu. ft. of gas

Rock pressure, lbs. per sq. in.

EMPLOYEES

C. P. Stewart, Driller J. H. Hargis, Driller

E. J. Locke, Driller

FORMATION RECORD ON OTHER SIDE

I hereby swear or affirm that the information given herewith is a complete and correct record of the well and all work done on it so far as can be determined from available records.

Hobbs, New Mexico May 27, 1952

Name C. H. Sweet

Position President

Representing Sweet Oil Well Equipment, Inc.

Address Box 1115, Hobbs, New Mexico

FORMATION RECORD

FROM	TO	THICKNESS IN FEET	FORMATION
0	58	58	Surface Sand & Caliche
58	229		Shells & Sand
229	1100		Red Bed
1100	1320		Anhydrite
1320	1704		Anhydrite, Salt & Gyp
1704	2650		Anhydrite, Salt & Shells
2650	2700		Anhydrite
2700	2750		Anhydrite & Gyp
2750	2775		Anhydrite
2775	3200		Lime
3200	3215		Lime & Gyp
3215	3280		Lime
3280	3395		Lime & Anhydrite
3395	3950		Lime
3950	4007		Sandy Lime
4007	4280		Sandy Lime
4280	4414		Lime T. D. 4414
			<u>RECORD OF DRILL STEM TESTS</u>
			DST #1 - 4221-4238' - Tool open 40 minutes. Recovered 500' black sulphur water.
			DST #2 - 4251-4278' - Tool open 1 hour. Recovered 3200' of heavily gas cut mud with trace oil.
			DST #3 - 4278-4293' - Tool open 1 hour. Recovered 390' of black sulphur water.
			DST #4 - 4384-97' - Tool open 1 hour. Recovered 350' of black sulphur water.
			DST # 5 - 4402-4414' - Tool open 30 minutes. Recovered 65' drilling water plus trace free oil.