

30-025-26423

NO. OF COPIES RECEIVED	
DISTRIBUTION	
SANTA FE	
FILE	
U.S.G.S.	
LAND OFFICE	
OPERATOR	

NEW MEXICO OIL CONSERVATION COMMISSION

Form C-101  
Revised 1-14-65

5A. Indicate Type of Lease  
 STATE  FEE   
 5. State Oil & Gas Lease No.  
 B-2148

APPLICATION FOR PERMIT TO DRILL, DEEPEN, OR PLUG BACK

1a. Type of Work  
 b. Type of Well DRILL  DEEPEN  PLUG BACK   
 OIL WELL  GAS WELL  OTHER  SINGLE ZONE  MULTIPLE ZONE   
 2. Name of Operator  
 Phillips Petroleum Company  
 3. Address of Operator  
 Room 401, 4001 Penbrook, Odessa, Tx. 79762  
 4. Location of Well  
 UNIT LETTER F LOCATED 1980 FEET FROM THE North LINE  
 AND 1980 FEET FROM THE West LINE OF SEC. 24 TWP. 17-S RGE. 33-E NMPM

7. Unit Agreement Name  
 --  
 8. Firm or Lease Name  
 Leamex  
 9. Well No.  
 23  
 10. Field  
 Maljamar Gb/San Andres  
 11. County  
 Lea  
 12. Proposed Depth  
 4700'  
 13A. Formation  
 Grayburg/San Andres  
 13B. Rotary or O.T.  
 Rotary  
 14. Elevations (skin, whether DF, KI, etc.)  
 4125.5 GR (Unprepared)  
 15A. Kind & Status of Plug Bond  
 Blanket  
 15B. Drilling Contractor  
 Advise later  
 16. Approx. Date Work will start  
 Upon approval

PROPOSED CASING AND CEMENT PROGRAM

SIZE OF HOLE	SIZE OF CASING	WEIGHT PER FOOT	SETTING DEPTH	SACKS OF CEMENT	EST. TOP
12-1/4"	8-5/8"	24# K-55	400'	(400 sx Class H w/2% CaCl <sub>2</sub> )	Circ at Surf.
				(and 1/4# Flocele in 1st 150 sx.)	
7-7/8"	4-1/2"	11.6# N-80	4700'	(Sufficient TRLW w/12#)	Circ at Surf.
				(salt/sx, 10% DD, 1/4# Flocele & 3#)	
				(Gelsonite/sx, followed by 150 sx)	
				(Class H w/8# salt/sx)	

Use mud additives as required for control.

BOP equipment: Series 900, 3000# WP (Figure 7 Schematic attached)

IN ABOVE SPACE DESCRIBE PROPOSED PROGRAM; IF PROPOSAL IS TO DEEPEN OR PLUG BACK, GIVE DATA ON PRESENT PRODUCTIVE ZONE AND PROPOSED NEW PRODUCTIVE ZONE. GIVE BLOWOUT PREVENTER PROGRAM, IF ANY.

I hereby certify that the information above is true and complete to the best of my knowledge and belief.

Signed Roger J. Roper R. J. Roper Sr. Reservoir Engineer Date July 27, 1979

(This space for State Use)

APPROVED BY Jerry Senter TITLE SUPERVISOR DISTRICT 1 DATE AUG 1 1979  
 CONDITIONS OF APPROVAL IF ANY:

**NEW MEXICO OIL CONSERVATION COMMISSION  
WELL LOCATION AND ACREAGE DEDICATION PLAT**

Form C-102  
Supersedes C-124  
Effective 1-1-65

All distances must be from the outer boundaries of the Section.

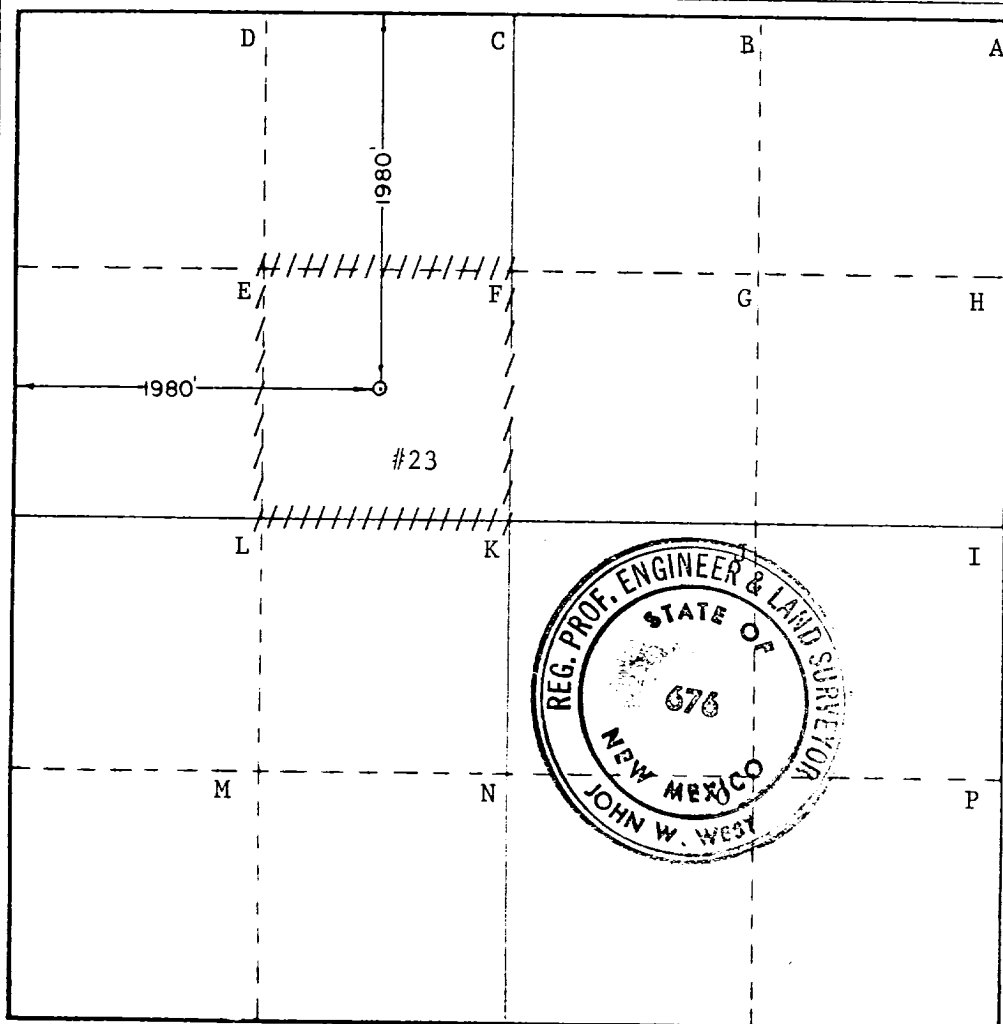
Operator <b>PHILLIPS PETROLEUM COMPANY</b>			Lease <b>LEAMEX</b>		Well No. <b>23</b>
Unit Letter <b>F</b>	Section <b>24</b>	Township <b>17 SOUTH</b>	Range <b>33 EAST</b>	County <b>LEA</b>	
Actual Footage Location of Well: <b>1980</b> feet from the <b>NORTH</b> line and <b>1980</b> feet from the <b>WEST</b> line					
Ground Level Elev. <b>4125.5</b> (Unprepared)	Producing Formation <b>Grayburg/San Andres</b>		Pool <b>Maljamar Gb/San Andres</b>	Dedicated Acreage: <b>40</b> Acres	

1. Outline the acreage dedicated to the subject well by colored pencil or hachure marks on the plat below.
2. If more than one lease is dedicated to the well, outline each and identify the ownership thereof (both as to working interest and royalty).
3. If more than one lease of different ownership is dedicated to the well, have the interests of all owners been consolidated by communitization, unitization, force-pooling, etc?

Yes    No   If answer is "yes," type of consolidation \_\_\_\_\_

If answer is "no," list the owners and tract descriptions which have actually been consolidated. (Use reverse side of this form if necessary.) \_\_\_\_\_

No allowable will be assigned to the well until all interests have been consolidated (by communitization, unitization, forced-pooling, or otherwise) or until a non-standard unit, eliminating such interests, has been approved by the Commission.



**CERTIFICATION**

*I hereby certify that the information contained herein is true and complete to the best of my knowledge and belief.*

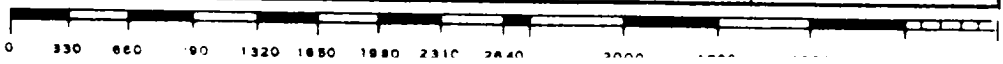
Name  
R. J. Roper *Roger S. Roper*  
Position  
Senior Reservoir Engineer  
Company  
Phillips Petroleum Company  
Date  
July 27, 1979

*I hereby certify that the well location shown on this plat was plotted from field notes of actual surveys made by me or under my supervision, and that the same is true and correct to the best of my knowledge and belief.*

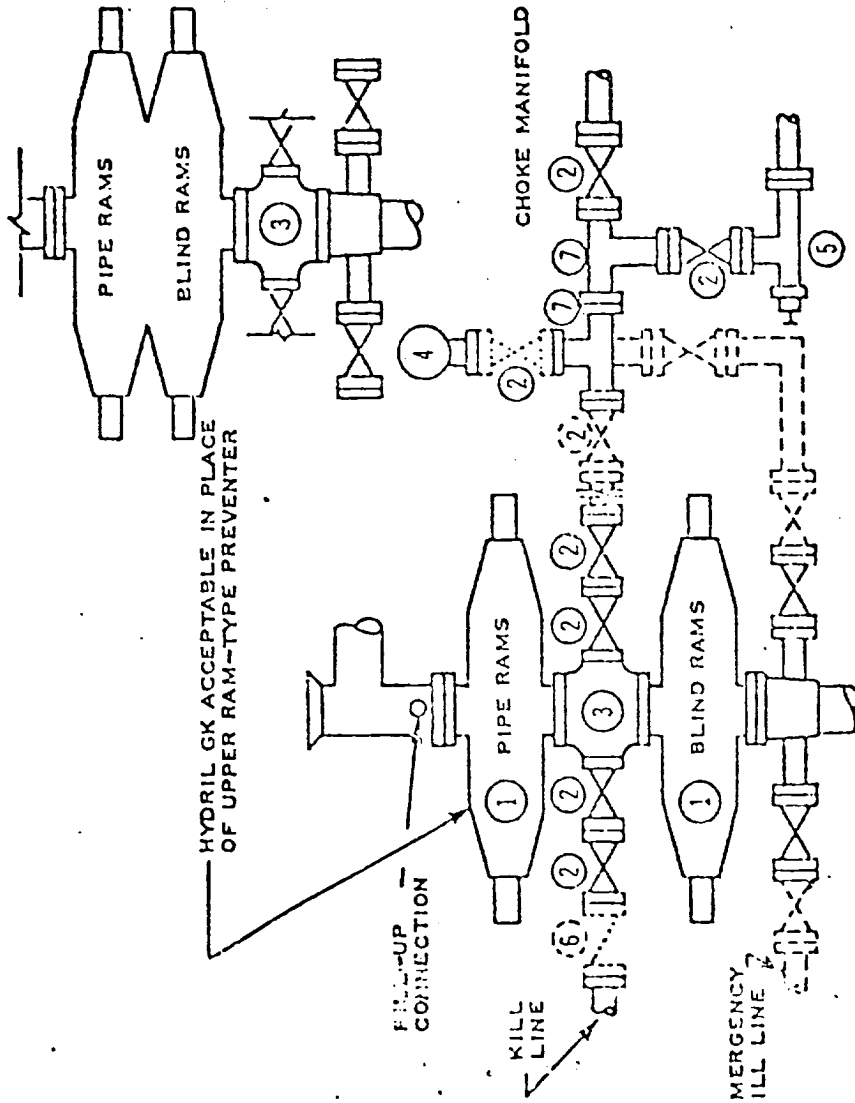
Date Surveyed:  
**JULY 24TH, 1979**

Registered Professional Engineer and/or Land Surveyor

*John W. West*  
Certificate No. **John W. West 676**



DOUBLE PREVENTER OPTION



- ① SERIES 900 RAM-TYPE BOP
- ② 2" SERIES 900 VALVE
- ③ SERIES 900 DRILLING SPOOL
- ④ 2" MUD PRESSURE GAUGE
- ⑤ 2" SERIES 900 CHOKE
- ⑥ 2" SERIES 900 CHECK VALVE
- ⑦ 2" SERIES 900 STEEL TEE

NOTES:

1. 3000 PSI WP CLAMP HUGS MAY BE SUBSTITUTED FOR FLANGES
2. VALVES MAY BE EITHER HAND OR POWER OPERATED BUT, IF POWER OPERATED, THE VALVES FLANGED TO THE BOP RUN MUST BE CAPABLE OF BEING OPENED AND CLOSED MANUALLY OR CLOSE ON POWER FAILURE AND BE CAPABLE OF BEING OPENED MANUALLY

..... OPTIONAL EQUIPMENT

PHILLIPS PETROLEUM COMPANY

3000 PSI WORKING PRESSURE  
BLOWOUT PREVENTER HOOK-UP  
(SERIES 900 FLANGES OR BETTER)

RECEIVED  
JUL 31 1970  
C. D. HOBBS, OFFICER

111