

OFFICE OF CONSERVATION DIVISION  
P. O. BOX 2088  
SANTA FE, NEW MEXICO 87501

Form C-101  
Revised 10-1-78

NO. OF COPIES RECEIVED	
DISTRIBUTION	
SANTA FE	
FILE	
U.S.G.L.	
LAND OFFICE	
OPERATOR	

3A. Indicate Type of Lease  
STATE  FEE

3. State Oil & Gas Lease No.  
B-1306

APPLICATION FOR PERMIT TO DRILL, DEEPEN, OR PLUG BACK

Type of Work

Type of Well DRILL  DEEPEN  PLUG BACK

OIL WELL  GAS WELL  OTHER  SINGLE TONGE  MULTIPLE TONGE

Name of Operator

7. Unit Agreement Name

8. Farm or Lease Name  
Central Vacuum Unit

9. Well No.  
302

Texaco Producing Inc.  
Address of Operator

P. O. Box 728, Hobbs, New Mexico 88240  
Location of Well

10. Field and Pool, or Wildcat  
Vacuum Grayburg  
San Andres

UNIT LETTER H LOCATED 2030 FEET FROM THE North LINE

1310 FEET FROM THE East LINE OF SEC. 6 TWP. 18-S REC. 35-E NMPM

12. County  
Lea

19. Proposed Depth 4710' 19A. Formation Grayburg-San Andres 20. Rotary or C.T. Rotary

Elevations (Show whether DF, RT, etc.) 3972 GR 21A. Kind & Status Plug. Bond Blanket 21B. Drilling Contractor

22. Approx. Date Work will start  
August 24, 1987

PROPOSED CASING AND CEMENT PROGRAM

SIZE OF HOLE	SIZE OF CASING	WEIGHT PER FOOT	SETTING DEPTH	SACKS OF CEMENT	EST. TOP
26"	20"	94#	350'	1000	Circulate
17-1/2"	13-3/8"	54.5#	1550'	1500	Surface
12-1/4"	9-5/8"	36# & 40#	2800'	1600	Surface
8-1/2"	7"	23#	4300'	850	Surface

CEMENTING PROGRAM

SURFACE CASING: 1000 sacks Class "H" w/2% CaCl2 and 1/4# Flocele (15.6 ppg, 1.18 cu. ft./sx).

1st INTERMEDIATE CASING: 1250 sacks 50/50 pozmix Class "H" w/2% CaCl2, 1/4# Flocele (14.15 ppg, 1.26 cu. ft./sx) followed by 250 sacks Class "H" w/2% CaCl2, 1/4# Flocele (15.6 ppg, 1.18 cu. ft./sx.).

2nd INTERMEDIATE CASING: 1st Stage: 750 sacks 50/50 Pozmix Class "H" w/10# Salt, w/2% CaCl2 (15.8 ppg, 1.18 cu. ft./sx.) followed by 250 sacks Class "H" w/2% CaCl2 (15.8 ppg, 1.18 cu. ft./sx). 2nd Stage: 600 sacks Class "H" w/2% CaCl2 (15.8 ppg, 1.18 cu. ft./sx). DV Tool @ 1537'. ECP @ 1540'.

PRODUCTION CASING: 600 sacks 50/50 Pozmix Class "H" w/1/4# Flocele (14.15 ppg, 1.28 cu. ft./sx.) followed by 250 sacks Class "H" w/1/4# Flocele (15.8 ppg, 1.18 cu. ft./sx).

CONTINUED ON PG 2

BELOW SPACE DESCRIBE PROPOSED PROGRAM IF PROPOSAL IS TO DEEPEN OR PLUG BACK, GIVE DATA ON PRESENT PRODUCTIVE ZONE AND PROPOSED NEW PRODUCTIVE ZONE. GIVE BLOWOUT PREVENTER PROGRAM, IF ANY.

I hereby certify that the information above is true and complete to the best of my knowledge and belief.  
L. S. Seeman Title Dist. Petr. Engr. Date 8/19/87

(This space for State Use)

ORIGINAL SIGNED BY JERRY SEXTON

DISTRICT I SUPERVISOR

DATE AUG 21 1987

Permit Expires 6 Months From Approval  
Date Unless Drilling Underway.

CENTRAL VACUUM UNIT WELL NO. 302  
VACUUM GRAYBURG SAN ANDRES  
LEA COUNTY, NEW MEXICO

Continuation to Form C-101

Hole from bottom of 7" casing to TD will be drilled w/6-1/8" bit and completed open hole. All other wells in this 1/4, 1/4 section are operated by Texaco. NSL - 2366 applies to this application.

RECEIVED

AUG 20 1987

OCD  
HOBBBS OFFICE

LAND CONSERVATION DIVISION

STATE OF NEW MEXICO  
ENERGY AND MINERALS DEPARTMENT

P. O. BOX 2088  
SANTA FE, NEW MEXICO 87501

Form C-102  
Revised 10-1-79

All distances must be from the outer boundaries of the Section.

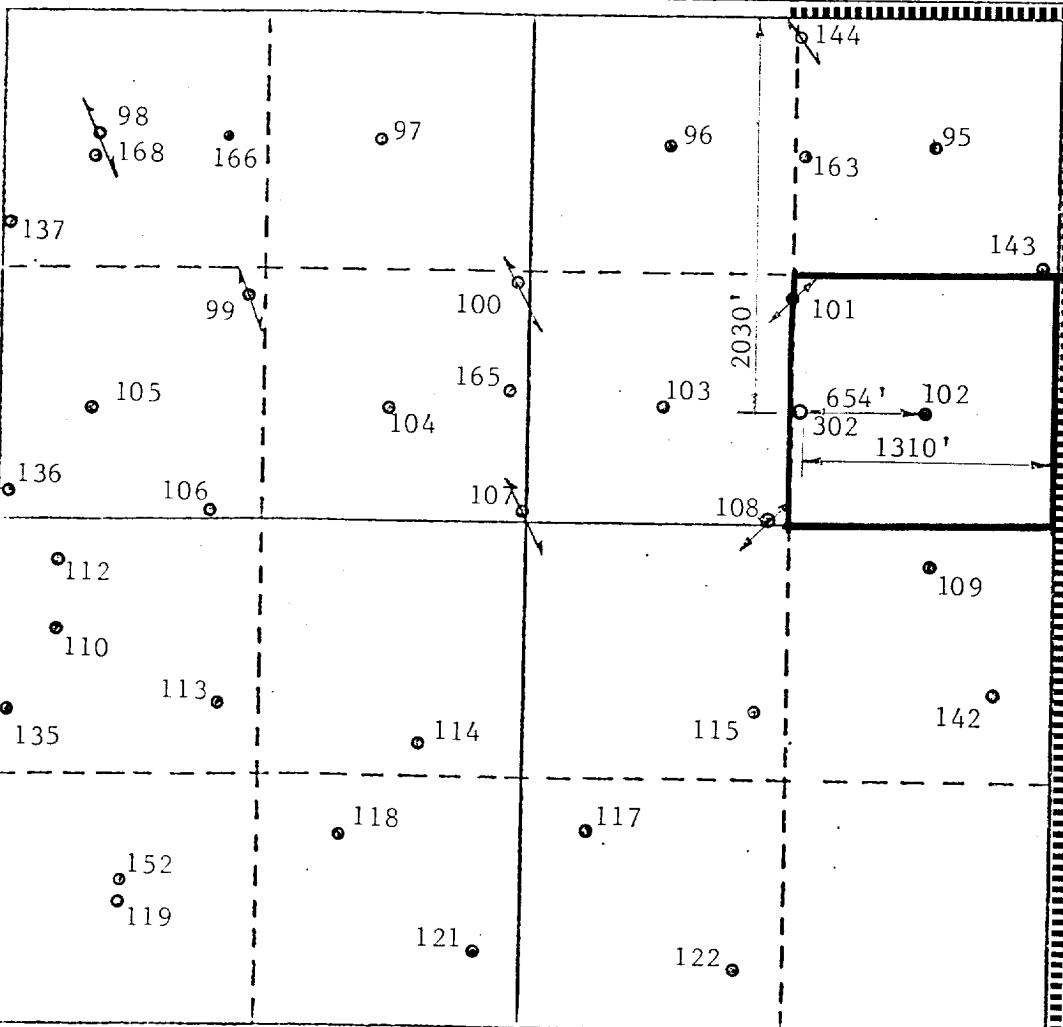
Operator <b>TEXACO PRODUCING INC.</b>			Lease <b>Central Vacuum Unit</b>		Well No. <b>302</b>
Unit Letter <b>H</b>	Section <b>6</b>	Township <b>18-S</b>	Range <b>35-E</b>	County <b>Lea</b>	
Actual Footage Location of Well: <b>2030</b> feet from the <b>North</b> line and <b>1310</b> feet from the <b>East</b> line					
Ground Level Elev. <b>3972'</b>	Producing Formation <b>Vacuum San Andres</b>		Pool <b>Vacuum (Grayburg &amp; San Andres)</b>		Dedicated Acreage: <b>40</b> Acres

1. Outline the acreage dedicated to the subject well by colored pencil or hachure marks on the plat below.
2. If more than one lease is dedicated to the well, outline each and identify the ownership thereof (both as to working interest and royalty).
3. If more than one lease of different ownership is dedicated to the well, have the interests of all owners been consolidated by communitization, unitization, force-pooling, etc?

Yes  No If answer is "yes," type of consolidation \_\_\_\_\_

If answer is "no," list the owners and tract descriptions which have actually been consolidated. (Use reverse side of this form if necessary.) \_\_\_\_\_

No allowable will be assigned to the well until all interests have been consolidated (by communitization, unitization, forced-pooling, or otherwise) or until a non-standard unit, eliminating such interests, has been approved by the Division.



CERTIFICATION

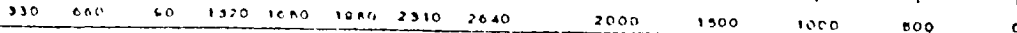
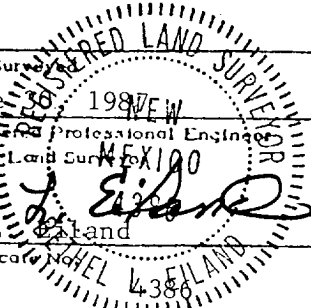
I hereby certify that the information contained herein is true and complete to the best of my knowledge and belief.

*B. L. Eiland*

Name  
B. L. Eiland  
Position  
Division Surveyor  
Company  
Texaco Producing Inc.  
Date  
July 2, 1987

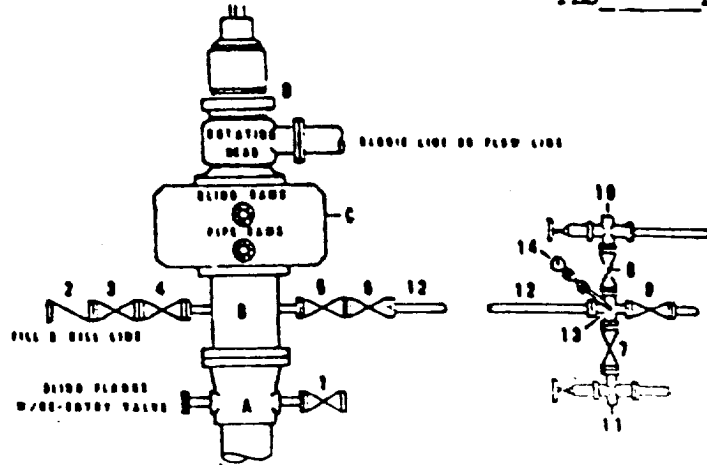
I hereby certify that the well location shown on this plat was plotted from field notes of actual surveys made by me or under my supervision, and that the same is true and correct to the best of my knowledge and belief.

Date Surveyed  
June 1987  
Registered Professional Engineer  
and/or Land Surveyor  
*B. L. Eiland*  
Certificate No. 4386



**DRILLING CONTROL  
CONDITION II-B 3000 WP  
FOR AIR DRILLING OR  
WHERE YATES AIR BLOWS ARE EXPECTED**

H<sub>2</sub>S TRIM REQUIRED  
YES \_\_\_\_\_ NO \_\_\_\_\_



DRILLING CONTROL

MATERIAL LIST - CONDITION II - B  
FOR AIR DRILLING

- A Texaco Wellhead
  - B 3000# W.P. drilling spool with a 2" minimum flanged outlet for kill-line and 3" minimum flanged outlet for choke line
  - C 3000# W.P. Dual ram type preventer, hydraulic operated with 1" steel, 3000# W.P. control lines (where sub-structure height is adequate, 2-3000# W.P. single ram type preventers may be utilized.)
  - D Rotating Head and extended Elucie Line.
- 1,3,4, 7,8 2" minimum 3000# W.P. flanged full opening steel gate valve, or Halliburton Lo Torc Plug valve.
  - 2 2" minimum 3000# W.P. back pressure valve
  - 5,6,9 3" minimum 3000# W.P. flanged full opening steel gate valve, or Halliburton Lo Torc Plug valve.
  - 12 3" minimum schedule 80, Grade "B", seamless line pipe
  - 13 2" minimum x 3" minimum 3000# W.P. flanged cross
  - 10, 11 2" minimum 3000# W.P. adjustable choke bodies
  - 14 Cameron Mud Gauge or equivalent (location optional in choke line.)



TEXACO, INC.  
HIGHLAND DIVISION  
HIGHLAND, TEXAS



SCALE	DATE	EST. NO.	DRG. NO.
DRAWN BY			
CHECKED BY			
APPROVED BY			

**EXHIBIT C**

1892  
1893  
1894

1895

1896

1897