



STATE OF NEW MEXICO
ENERGY AND MINERALS DEPARTMENT
 OIL CONSERVATION DIVISION
 HOBBS DISTRICT OFFICE

5-25-90

GARREY CARRUTHERS
 GOVERNOR

POST OFFICE BOX 1980
 HOBBS, NEW MEXICO 88241-1980
 (505) 393-6161

OIL CONSERVATION DIVISION
 P. O. BOX 2088
 SANTA FE, NEW MEXICO 87501

NSL-2801

RE: Proposed:

- MC _____
- DHC _____
- NSL _____
- NSP _____
- SWD _____
- WFX _____
- PMX _____

Gentlemen:

I have examined the application for the:

Tetaco Producing Inc. Vacuum GB/SA Unit # 150-G 1-18-34
 Operator Lease & Well No. Unit S-T-R

and my recommendations are as follows:

OK

Yours very truly,

Jerry Sexton
 Jerry Sexton
 Supervisor, District 1

/ed



Texaco USA
Producing Department
Midland Division

PO Box 5109
Midland TX 79702-5109

May 22, 1990

GOV - STATE AND LOCAL GOVERNMENTS

Unorthodox Locations
Vacuum Grayburg San Andres Unit
Well No. 150
Lea County, New Mexico

State of New Mexico
Energy and Minerals Department
Oil Conservation Division
P. O. Box 2088
Santa Fe, New Mexico 87501-2088

Attention: Mr. Michael E. Stogner

Gentlemen:

An Exception to Rule 104 F.I. by administrative approval is requested for Texaco Producing Inc.'s Vacuum Grayburg San Andres Unit Well No. 150. This well is located 1390' FNL & 1980' FEL, Unit Letter "G", of Section 1, T-18-S, R-34-E.

This well must be drilled in this location to ensure proper development of 10-acre spacing. Wells drilled previously on 10-acre spacing have proven to be viable wells. It will be completed in the Grayburg San Andres formation.

There are no "affected offset operators" to this location. Attached is Form C-102 and a lease plat showing the location of the subject well.

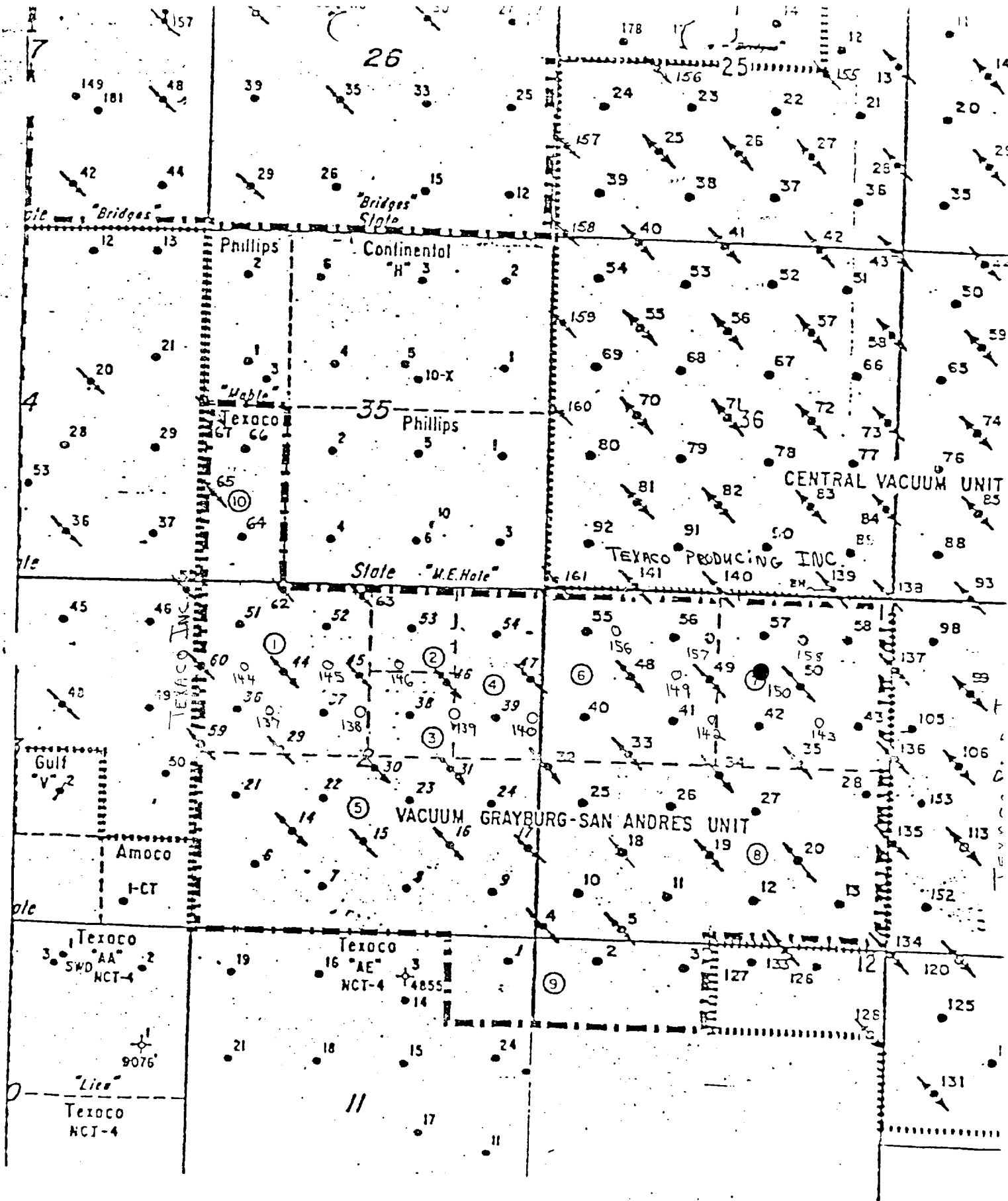
Yours very truly,

C. P. Basham
Drilling Superintendent
on Behalf of Texaco Producing Inc.

CWH:cwh

Attachment

cc: NMOCD, P. O. Box 1980, Hobbs, NM 88240



⑨ TRACT NUMBER

TEXACO PROD. INC.
 VACUUM G-SA UNIT
 VACUUM G-SA FIELD
 LEA COUNTY, NEW MEXICO

Submit to Appropriate District Office
 State Lease - 6 copies
 Fee Lease - 5 copies

State of New Mexico
 Energy, Minerals and Natural Resources Department

Form C-101
 Revised 1-1-89

OIL CONSERVATION DIVISION
 P.O. Box 2088
 Santa Fe, New Mexico 87504-2088

DISTRICT I
 P.O. Box 1980, Hobbs, NM 88240

DISTRICT II
 P.O. Drawer DD, Artesia, NM 88210

DISTRICT III
 1000 Rio Brazos Rd., Aztec, NM 87410

API NO. (assigned by OCD on New Wells)

30-925-20917

5. Indicate Type of Lease
 STATE FEE

6. State Oil & Gas Lease No.
 857948

APPLICATION FOR PERMIT TO DRILL, DEEPEN, OR PLUG BACK

1a. Type of Work:
 DRILL RE-ENTER DEEPEN PLUG BACK
 b. Type of Well:
 OIL WELL GAS WELL OTHER
 SINGLE ZONE MULTIPLE ZONE

7. Lease Name or Unit Agreement Name
 VACUUM GRAYBURG SAN ANDRES UNIT

2. Name of Operator
 TEXACO PRODUCING INC.

8. Well No.
 150

3. Address of Operator
 P. O. Box 3109, Midland, Texas 79702

9. Pool name or Wildcat
 VACUUM GRAYBURG SAN ANDRES

4. Well Location
 Unit Letter G : 1390 Feet From The NORTH Line and 1980 Feet From The EAST Line
 Section 1 Township 18-SOUTH Range 34-EAST NMPM LEA County

10. Proposed Depth 5000'
 11. Formation GRAYBURG-S.A.
 12. Rotary or C.T. R

13. Elevations (Show whether DF, RT, GR, etc.)
GR-3991'
 14. Kind & Status Plug. Bond
BLANKET
 15. Drilling Contractor
BASIN
 16. Approx. Date Work will start
07-15-90

17. PROPOSED CASING AND CEMENT PROGRAM

SIZE OF HOLE	SIZE OF CASING	WEIGHT PER FOOT	SETTING DEPTH	SACKS OF CEMENT	EST. TOP
22 1/2	18 5/8	87.5#	400'	600	SURFACE
17 1/2	13 3/8	48# & 54.5#	1550'	1500	SURFACE
12 1/4	9 5/8	36#	2800'	1100	SURFACE
8 3/4	7	26#	5000'	650	SURFACE

CEMENTING PROGRAM
 CONDUCTOR CASING - 24 IN., 94.62#, SET AT 40' AND CEMENTED WITH REDI-MIX.
 SURFACE CASING - 600 SACKS CLASS H WITH 2% CaCl2, 1/4# FLOCELE AT 15.6ppg, 1.19 f3/sx, 5.2 gal wtr/sx.
 1st INTERMEDIATE - 1500 SACKS CLASS H WITH 2% CaCl2, 1/4# FLOCELE AT 15.6ppg, 1.19 f3/SX, 5.2 gal wtr/SX.
 2nd INTERMEDIATE - 350 SACKS 50/50 POZ CLASS H WITH 2% CaCl2, 5% SALT AT 14.25ppg, 1.28 f3/SX, 5.75 gal wtr/SX. FOLLOWED BY 250 SACKS CLASS H WITH 2% CaCl2 AT 15.6ppg, 1.19 f3/SX, 5.2 gal wtr/SX.
 DV TOOL AT 1600' - 500 SACKS CLASS H WITH 2% CaCl2 AT 15.6ppg, 1.19 f3/SX, 5.2 gal wtr/SX.
 PRODUCTION CASING - 400 SACKS 35/65 POZ CLASS H WITH 6% GEL, 5% SALT 1/4# FLOCELE AT 12.8ppg, 1.87 f3/SX, 9.9 gal wtr/sx. FOLLOWED BY 250 SACKS CLASS H WITH 1/4# FLOCELE AT 15.6ppg, 1.18 f3/SX, 5.2 gal wtr/SX.

THERE ARE NO OTHER OPERATORS IN THIS QUARTER/QUARTER SECTION.
 UNORTHODOX LOCATION - 10 ACRE SPACING.

Permit Expires 6 Months From Approval Date Unless Drilling Underway.

IN ABOVE SPACE DESCRIBE PROPOSED PROGRAM: IF PROPOSAL IS TO DEEPEN OR PLUG BACK, GIVE DATA ON PRESENT PRODUCTIVE ZONE AND PROPOSED NEW PRODUCTIVE ZONE. GIVE BLOWOUT PREVENTER PROGRAM, IF ANY.

I hereby certify that the information above is true and complete to the best of my knowledge and belief.

SIGNATURE C. Wade Howard TITLE ENGINEERING ASSISTANT DATE 05-22-90

TYPE OR PRINT NAME C. WADE HOWARD TELEPHONE NO. 915-688-4606

(This space for State Use)
 ORIGINAL SIGNED BY JERRY SEXTON
 DISTRICT I SUPERVISOR

MAY 31 1990

APPROVED BY _____ TITLE _____ DATE _____

CONDITIONS OF APPROVAL, IF ANY:

77 J.L. 2801

Submit to Appropriate District Office
 State Lease - 4 copies
 Fee Lease - 3 copies

State of New Mexico
 Energy, Minerals and Natural Resources Department

Form C-102
 Revised 1-1-89

OIL CONSERVATION DIVISION

DISTRICT I
 P.O. Box 1980, Hobbs, NM 88240

P.O. Box 2088

Santa Fe, New Mexico 87504-2088

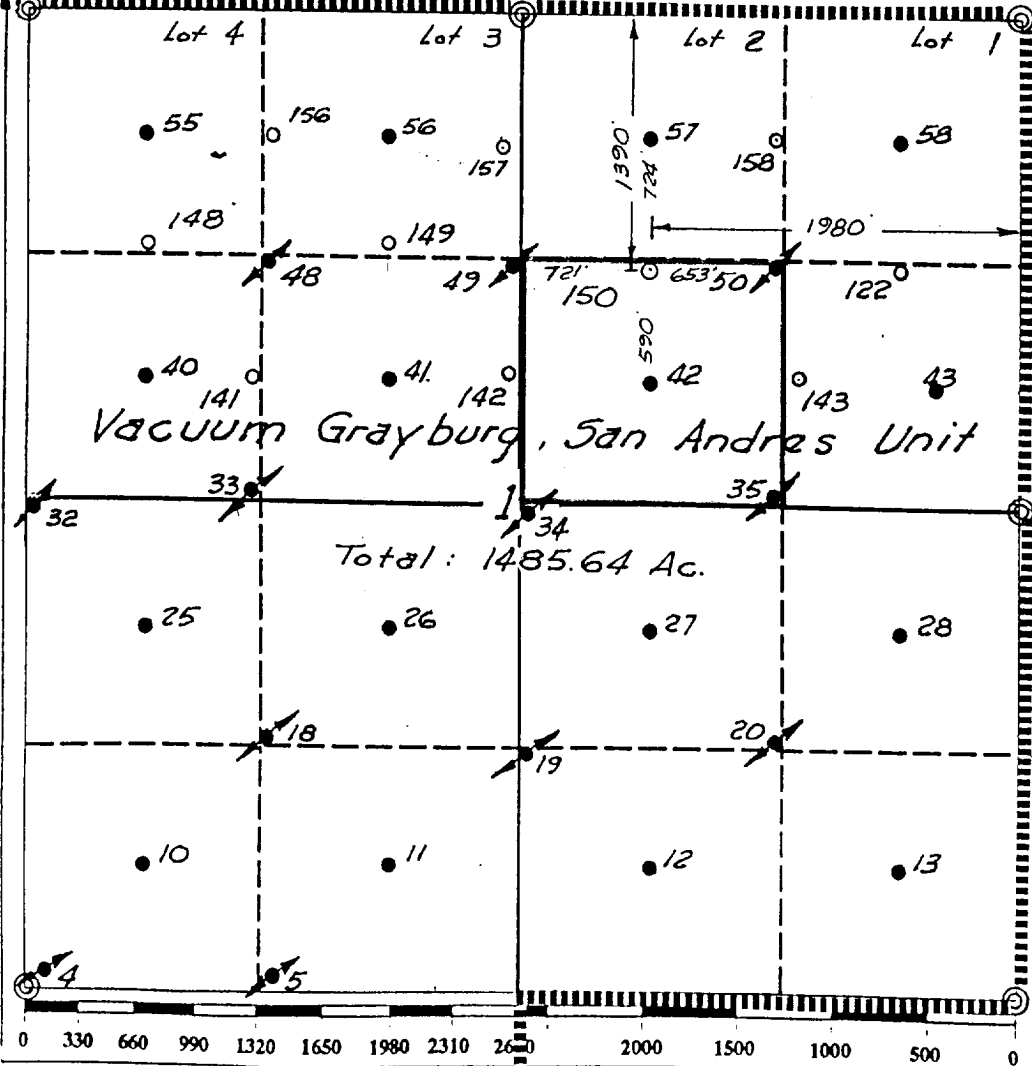
DISTRICT II
 P.O. Drawer DD, Artesia, NM 88210

DISTRICT III
 1000 Rio Brazos Rd., Aztec, NM 87410

WELL LOCATION AND ACREAGE DEDICATION PLAT

All Distances must be from the outer boundaries of the section

Operator TEXACO PRODUCING INC.			Lease Vacuum Grayburg, San Andres Unit		Well No. 150
Unit Letter G	Section 1	Township 18 South	Range 34 East	County Lea	
Actual Footage Location of Well: 1390 feet from the North line and 1980 feet from the East line					
Ground level Elev. 3991	Producing Formation Grayburg - San Andres		Pool Vacuum Grayburg - San Andres		Dedicated Acreage: 40 Acres
<p>1. Outline the acreage dedicated to the subject well by colored pencil or hachure marks on the plat below.</p> <p>2. If more than one lease is dedicated to the well, outline each and identify the ownership thereof (both as to working interest and royalty).</p> <p>3. If more than one lease of different ownership is dedicated to the well, have the interest of all owners been consolidated by communitization, unitization, force-pooling, etc.? <input checked="" type="checkbox"/> Yes <input type="checkbox"/> No If answer is "yes" type of consolidation <u>Unitization</u></p> <p>If answer is "no" list the owners and tract descriptions which have actually been consolidated. (Use reverse side of this form if necessary.)</p> <p>No allowable will be assigned to the well until all interests have been consolidated (by communitization, unitization, forced-pooling, or otherwise) or until a non-standard unit, eliminating such interest, has been approved by the Division.</p>					



OPERATOR CERTIFICATION
 I hereby certify that the information contained herein is true and complete to the best of my knowledge and belief.

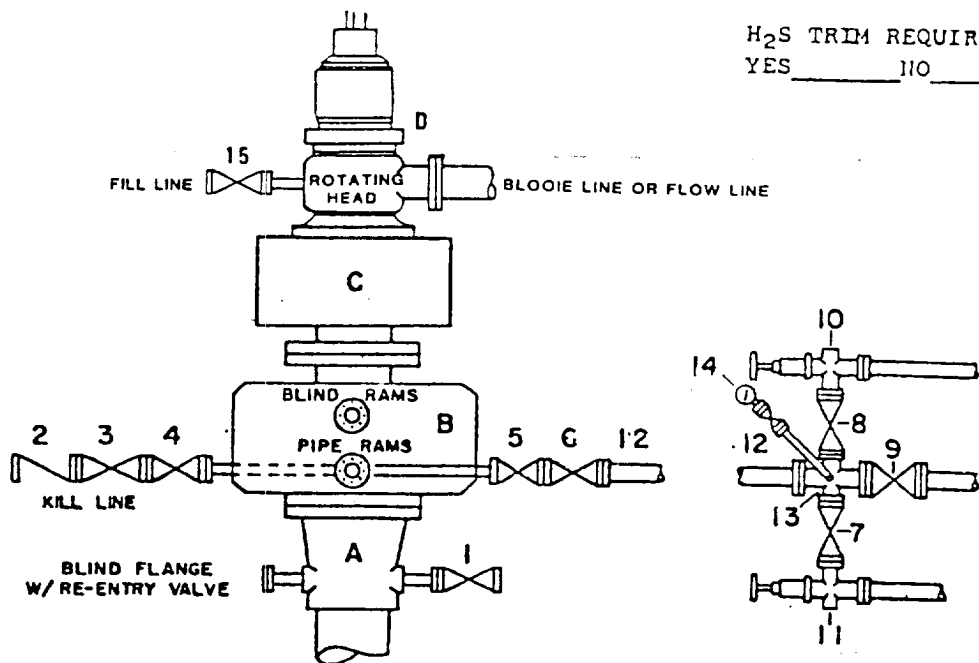
Signature: *Royce Mariott*
 Printed Name: Royce Mariott
 Position: Division Surveyor
 Company: Texaco Producing Inc.
 Date: May 17, 1990

SURVEYOR CERTIFICATION
 I hereby certify that the well location shown on this plat was plotted from field notes of actual surveys made by me or under my supervision, and that the same is true and correct to the best of my knowledge and belief.

Date Surveyed: May 16, 1990
 Signature & Seal of Professional Surveyor: *John S. Piper*
 Certificate No.: 7254
 John S. Piper

**DRILLING CONTROL
CONDITION III-B 3000 PSI WP**

H₂S TRIM REQUIRED
YES _____ NO _____



DRILLING CONTROL

MATERIAL LIST - CONDITION III - B

- A Texaco Wellhead
- B 3000# W.P. Dual ram type preventer, hydraulic operated with 1" steel, 3000# W.P. control lines (where sub-structure height is adequate, 2 - 3000# W.P. single ram preventers may be utilized with 3000# W.P. drilling spool with 2" minimum flanged outlet for kill line and 3" minimum flanged outlet for choke line. The drilling spool is to be installed below the single ram type preventers).
- C 3000# W.P. Annular Preventer with 1" steel, 3000# W.P. control lines.
- D Rotating Head with fill up outlet and extended Bloopie line.
- 1,3,4, 7,8, 2" minimum 3000# W.P. flanged full opening steel gate valve, or Halliburton Lo Torc Plug valve.
- 2 2" minimum 3000# W.P. back pressure valve.
- 5,6,9 3" minimum 3000# W.P. flanged full opening steel gate valve, or Halliburton Lo Torc Plug valve.
- 12 3" minimum Schedule 80, Grade B, seamless line pipe.
- 13 2" minimum x 3" minimum 3000# W.P. flanged cross.
- 10,11 2" minimum 3000# W.P. adjustable choke bodies.
- 14 Cameron Mud Gauge or equivalent (location optional in Choke line).
- 15 2" minimum 3000# W.P. flanged or threaded full opening steel gate valve, or Halliburton Lo Torc Plug valve.

SCALE	DATE	EST NO	ORG NO
DRAWN BY			
CHECKED BY			
APPROVED BY			



TEXACO, INC.
MIDLAND DIVISION
MIDLAND, TEXAS



EXHIBIT E