

OIL CONSERVATION DIVISION

DISTRICT I
P.O. Box 1980, Hobbs, NM 88240

P.O. Box 2088

Santa Fe, New Mexico 87504-2088

DISTRICT II
P.O. Drawer DD, Artesia, NM 88210

DISTRICT III
1000 Rio Brazos Rd., Aztec, NM 87410

WELL LOCATION AND ACREAGE DEDICATION PLAT

All Distances must be from the outer boundaries of the section

Operator SAGE ENERGY COMPANY		Lease NVANU "4" A		Well No. 22
Unit Letter K	Section 1	Township 17 SOUTH	Range 34 EAST NMPM	County LEA

Actual Footage Location of Well:
1980 feet from the SOUTH line and 1980 feet from the WEST line

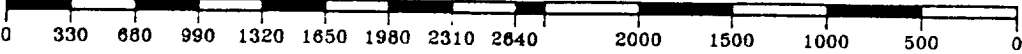
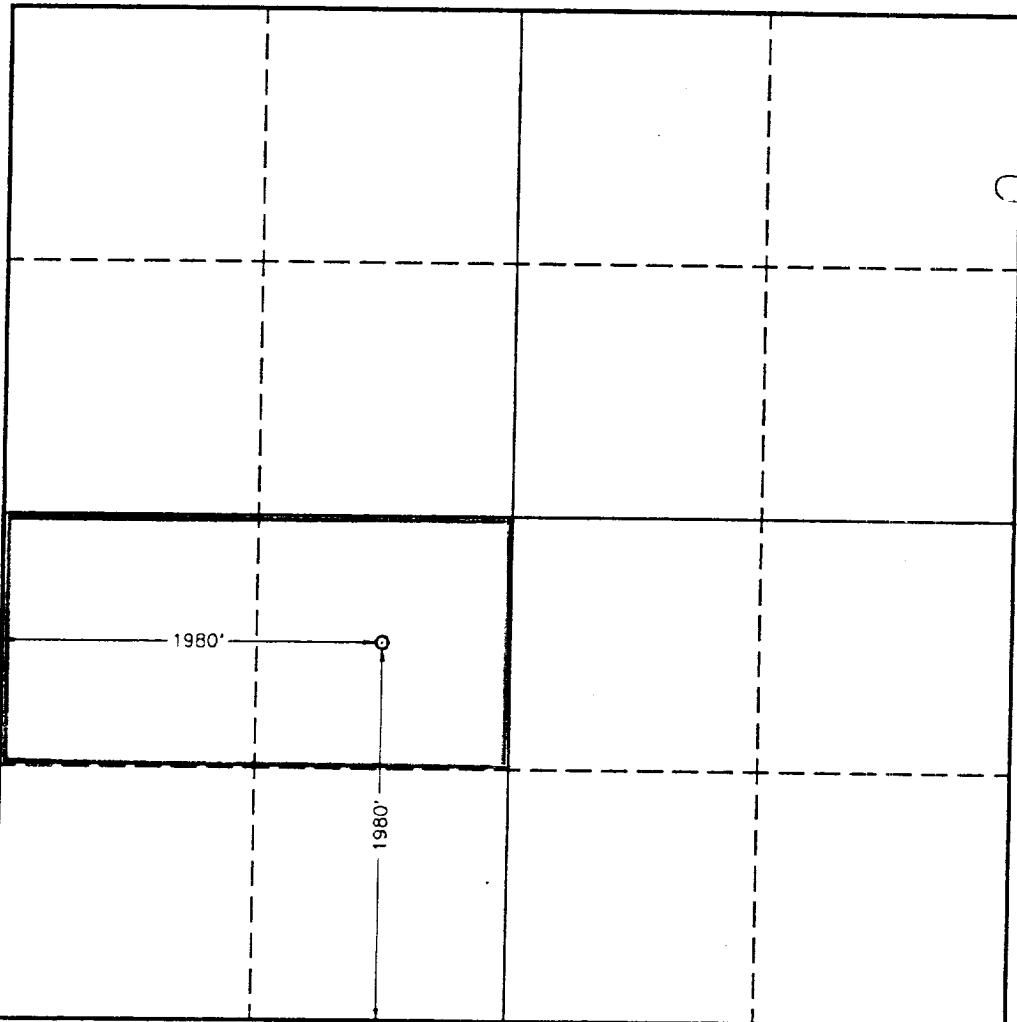
Ground Level Elev. 4035.1'	Producing Formation Abo	Pool North Vaccuum NVANU ABO	Dedicated Acreage: 80 Acres
-------------------------------	----------------------------	------------------------------------	--------------------------------

- Outline the acreage dedicated to the subject well by colored pencil or hachure marks on the plat below.
- If more than one lease is dedicated to the well, outline each and identify the ownership thereof (both as to working interest and royalty).
- If more than one lease of different ownership is dedicated to the well, have the interest of all owners been consolidated by communitization, unitization, force-pooling, etc.?

Yes No If answer is "yes" type of consolidation _____

If answer is "no" list of owners and tract descriptions which have actually been consolidated. (Use reverse side of this form necessary.)

No allowable will be assigned to the well unit all interests have been consolidated (by communitization, unitization, forced-pooling, otherwise) or until a non-standard unit, eliminating such interest, has been approved by the Division.



OPERATOR CERTIFICATION

I hereby certify the the information contained herein is true and complete to the best of my knowledge and belief.

Signature
Tonya Streun

Printed Name
Tonya Streun

Position
Production Clerk

Company
SAGE ENERGY COMPANY

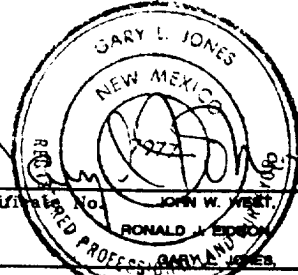
Date
9-24-93

SURVEYOR CERTIFICATION

I hereby certify that the well location shown on this plat was plotted from field notes of actual surveys made by me or under my supervision, and that the same is true and correct to the best of my knowledge and belief.

Date Surveyed
SEPTEMBER 15, 1993

Signature & Seal of Professional Surveyor



Certificate No. JOHN W. WEST, 878

RONALD J. EDSON, 3230

GARY L. JONES, 7877

93-11-703

Comp. Houston Jun 27

7-18-93
11:11 AM
11:11 AM

RECEIVED

SEP 27 1993

OFFICE