

DISTRICT I
P.O. Box 1980, Hobbs, NM 88241-1980

State of New Mexico
Energy, Minerals and Natural Resources Department

Form C-101
Revised February 10, 1994

DISTRICT II
P.O. Box Drawer DD, Artesia, NM 88211-0719

OIL CONSERVATION DIVISION

Instructions on back
Submit to Appropriate District Office
State Lease - 6 Copies
Fee Lease - 5 Copies

DISTRICT III
1000 Rio Brazos Rd., Aztec, NM 87410

P.O. Box 2088

Santa Fe, New Mexico 87504-2088

DISTRICT IV
P.O. Box 2088, Santa Fe, NM 87504-2088

AMENDED REPORT

APPLICATION FOR PERMIT TO DRILL, RE-ENTER, DEEPEN, PLUGBACK, OR ADD A ZONE

¹ Operator Name and Address TEXACO EXPLORATION & PRODUCTION INC. P.O. Box 3109, Midland Texas 79702		² OGRID Number 022351
		³ API Number 30-025-32805
⁴ Property Code 11122	⁵ Property Name CENTRAL VACUUM UNIT	⁶ Well No. 200

⁷ Surface Location									
UI or lot no.	Section	Township	Range	Lot.Idn	Feet From The	North/South Line	Feet From The	East/West Line	County
C	6	18-S	35-E		1236	NORTH	1875	WEST	LEA

⁸ Proposed Bottom Hole Location If Different From Surface									
UI or lot no.	Section	Township	Range	Lot.Idn	Feet From The	North/South Line	Feet From The	East/West Line	County
⁹ Proposed Pool 1 VACUUM GRAYBURG-SAN ANDRES					¹⁰ Proposed Pool 2				

¹¹ Work Type Code N	¹² WellType Code I	¹³ Rotary or C.T. ROTARY	¹⁴ Lease Type Code S	¹⁵ Ground Level Elevation 3974'
¹⁶ Multiple No	¹⁷ Proposed Depth 4850'	¹⁸ Formation GRAYBURG-SAN ANDRES	¹⁹ Contractor	²⁰ Spud Date 3/15/95

²¹ Proposed Casing and Cement Program					
SIZE OF HOLE	SIZE OF CASING	WEIGHT PER FOOT	SETTING DEPTH	SACKS OF CEMENT	EST. TOP
11	8 5/8	24#	1535'	585 SACKS	SURFACE
7 7/8	5 1/2	15.5#	4850'	1200 SACKS	SURFACE

²² Describe the proposed program. If this application is to DEEPEN or PLUG BACK give the data on the present productive zone and proposed new productive zone. Describe the blowout prevention program, if any. Use additional sheets if necessary.

CEMENTING PROGRAM:
 SURFACE CASING - 435 SACKS CLASS C w/4% GEL, 2% CaCl₂ (13.5 PPG, 1.74 CF/S, 9.1 GW/S). F/B 150 SACKS CLASS C w/ 2% CaCl₂ (14.8, 1.34 CF/S, 6.3 GW/S).
 PRODUCTION CASING - 1000 SACKS 35/65 POZ CLASS H w/ 6% GEL, 5% SALT, 1/4# FLOCELE (12.8 PPG, 1.94 CF/S, 10.4 GW/S). F/B 200 SACKS CLASS H (15.6 PPG, 1.18 CF/S, 5.2 GW/S).

UNORTHODOX LOCATION: NSL-3451. AN EXCEPTION FOR THE AMENDED LOCATION HAS BEEN APPLIED FOR. (COPY ATTACHED)
 LOCATION WAS MOVED 65' NORTH AT GPM'S REQUEST TO BE 100' FROM THEIR BURIED GAS LINE.

MARATHON OPERATES A WELL IN THIS QUARTER QUARTER SECTION AND HAS BEEN FURNISHED A COPY OF THIS APPLICATION.

²³ I hereby certify that the rules and regulations of the Oil Conservation Division have been complied with and that the information given above is true and complete to the best of my knowledge and belief.	OIL CONSERVATION DIVISION	
Signature <i>C. Wade Howard</i>	Approved By: <i>Paul Kautz</i> Geologist	
Printed Name C. Wade Howard	Title:	
Title Eng. Assistant	Approval Date MAR 07 1995	Expiration Date:
Date 3/2/95	Telephone 688-4606	Conditions of Approval: Attached <input type="checkbox"/>

Permit Expires 6 Months From Approval Date Unless Drilling Underway.

DISTRICT I
P. O. Box 1980, Hobbs, NM 88240

DISTRICT II
P. O. Drawer DD, Artesia, NM 88210

DISTRICT III
1000 Rio Brazos Rd., Aztec, NM 87410

DISTRICT IV
P. O. Box 2088, Santa Fe, NM 87504-2088

State of New Mexico
Geology, Minerals and Natural Resources Department

Form C-102
Revised February 10, 1994

Instructions on back

OIL CONSERVATION DIVISION

PO Box 2088
Santa Fe, NM 87504-2088

Submit to Appropriate District Office

State Lease-4 copies
Fee Lease-3 copies

WELL LOCATION AND ACREAGE DEDICATION PLAT

AMENDED REPORT

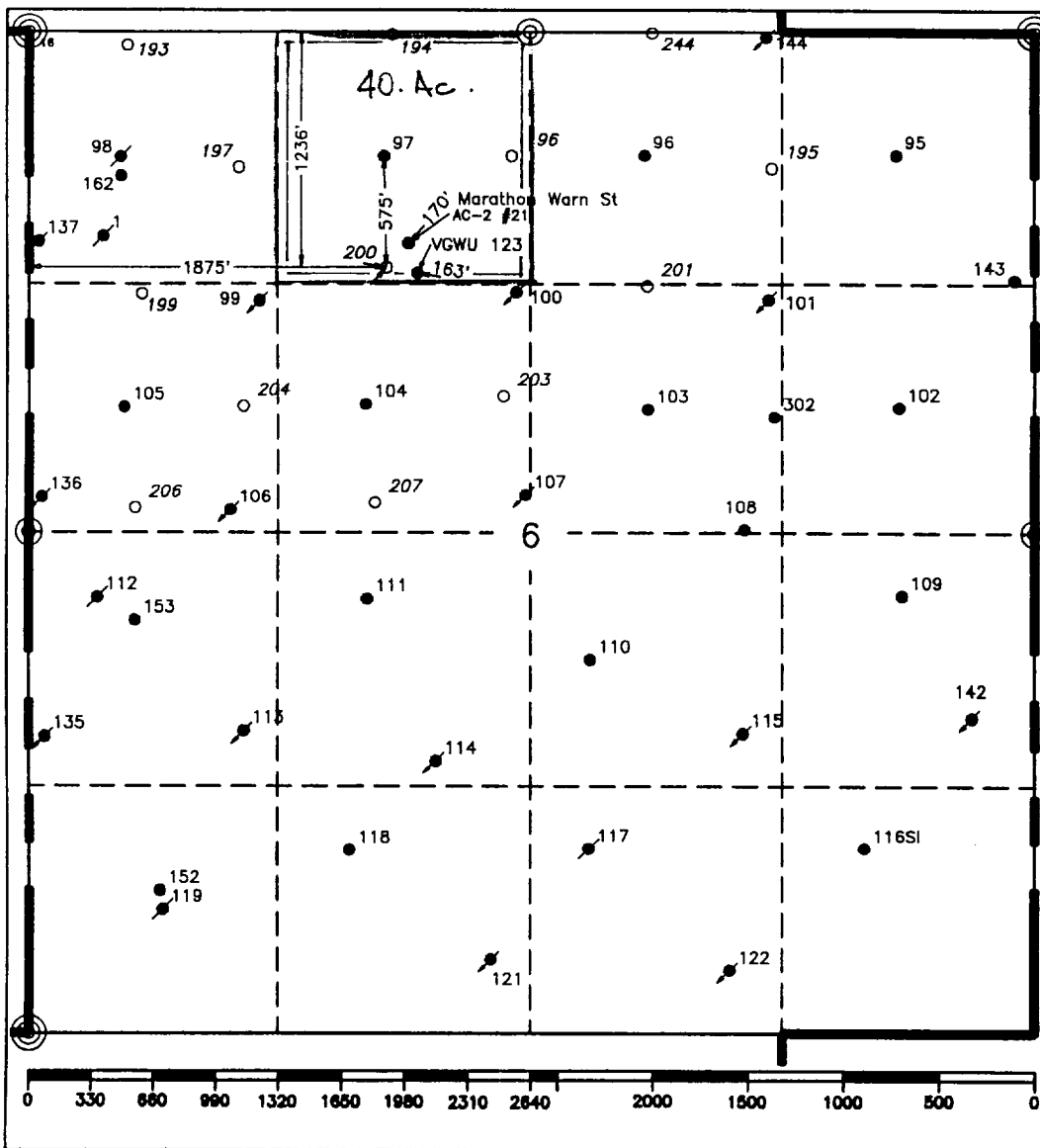
¹ API Number 30-025-32805		² Pool Code 62180		³ Pool Name Vacuum Grayburg-San Andres	
⁴ Property Code 11122		⁵ Property Name Central Vacuum Unit			⁶ Well Number 200
⁷ OGRID No. 22351		⁸ Operator Name TEXACO EXPLORATION & PRODUCTION, INC.			⁹ Elevation 3974'

¹⁰ Surface Location									
UL or lot no.	Section	Township	Range	Lot Idn	Feet from the	North/South line	Feet from the	East/West line	⁷ County
C	6	18-S	35-E		1236'	North	1875'	West	Lea

¹¹ Bottom Hole Location if Different From Surface									
UL or lot no.	Section	Township	Range	Lot Idn	Feet from the	North/South line	Feet from the	East/West line	⁷ County

¹² Dedicated Acres 40	¹³ Joint or Infill	¹⁴ Consolidation Code	¹⁵ Order No.
-------------------------------------	-------------------------------	----------------------------------	-------------------------

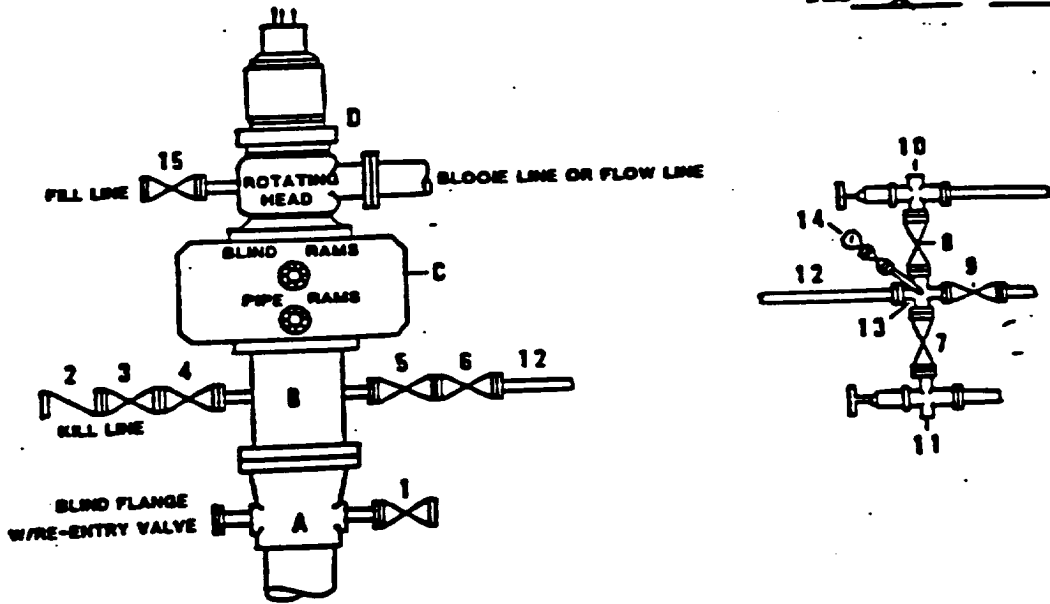
NO ALLOWABLE WILL BE ASSIGNED TO THIS COMPLETION UNTIL ALL INTERESTS HAVE BEEN CONSOLIDATED OR A NON-STANDARD UNIT HAS BEEN APPROVED BY THE DIVISION.



¹ OPERATOR CERTIFICATION	
I hereby certify that the information contained herein is true and complete to the best of my knowledge and belief.	
Signature	<i>C. Wade Howard</i>
Printed Name	C. Wade Howard
Position	Engineer's Assistant
Company	Texaco Expl. & Prod. Inc.
Date	March 2, 1995
¹⁸ SURVEYOR CERTIFICATION	
I hereby certify that the well location shown on this plat was plotted from field notes of actual surveys made by me or under my supervision, and that the same is true and correct to the best of my knowledge and belief.	
Date Surveyed	March 1, 1995
Signature & Seal of Professional Surveyor	<i>John S. Piper</i>
Certificate No.	7254 John S. Piper
Sheet	

**DRILLING CONTROL
CONDITION II-B 3000 WP
FOR AIR DRILLING OR
WHERE NITROGEN OR AIR BLOWS ARE EXPECTED**

H₂S TRIM REQUIRED
YES X NO



**DRILLING CONTROL
MATERIAL LIST - CONDITION II - B**

- A Texaco Wellhead
- B 3000# W.P. drilling spool with a 2" minimum flanged outlet for kill line and 3" minimum flanged outlet for choke line.
- C 3000# W.P. Dual ram type preventer, hydraulic operated with 1" steel, 3000# W.P. control lines (where sub-structure height is adequate, 2 - 3000# W.P. single ram type preventers may be utilized).
- D Rotating Head with fill up outlet and extended Biscie Line.
- 1,3,4, 7,8. 2" minimum 3000# W.P. flanged full opening steel gate valve, or Malliburton Lo Torc Plug valve.
- 2 2" minimum 3000# W.P. back pressure valve.
- 5,6,9 3" minimum 3000# W.P. flanged full opening steel gate valve, or Malliburton Lo Torc Plug valve.
- 12 3" minimum schedule 80, Grade "B", seamless line pipe.
- 13 2" minimum x 3" minimum 3000# W.P. flanged cross.
- 10,11 2" minimum 3000# W.P. adjustable choke bodies.
- 14 Cameron Mud Gauge or equivalent (location optional in choke line).
- 15 2" minimum 3000# W.P. flanged or threaded full opening steel gate valve, or Malliburton Lo Torc Plug valve.



TEXACO, INC.
WELLS DIVISION
HOUSTON, TEXAS



EXHIBIT C

SCALE	DATE	EST NO	ORD NO
DRAWN BY			
CHECKED BY			
APPROVED BY			



Texas Exploration and Production Inc.
Midland, Texas 79701

500 N. Lamar
Midland, TX 79701

1000 N. Lamar
Midland, TX 79701

March 2, 1994

GOV - STATE AND LOCAL GOVERNMENTS

Unorthodox Location
Central Vacuum Unit
Administrative Order NSL-3451
Well No. 200
Lea County, New Mexico

State of New Mexico
Energy and Minerals Department
Oil Conservation Division
P. O. Box 2088
Santa Fe, New Mexico 87501-2088

Attention: Mr. Michael E. Stogner

Gentlemen:

An Exception to Rule 104 F.I. by administrative approval is requested for an amended location for this well. Administrative Order NSL-3451 was granted January 4, 1995. The location for this well was moved 65' North at GPM's request to be 100' from their buried Gas Line.

There are no "affected offset operators" to this well. Attached is Form C-102 for this well and a lease plat showing the location of the subject well.

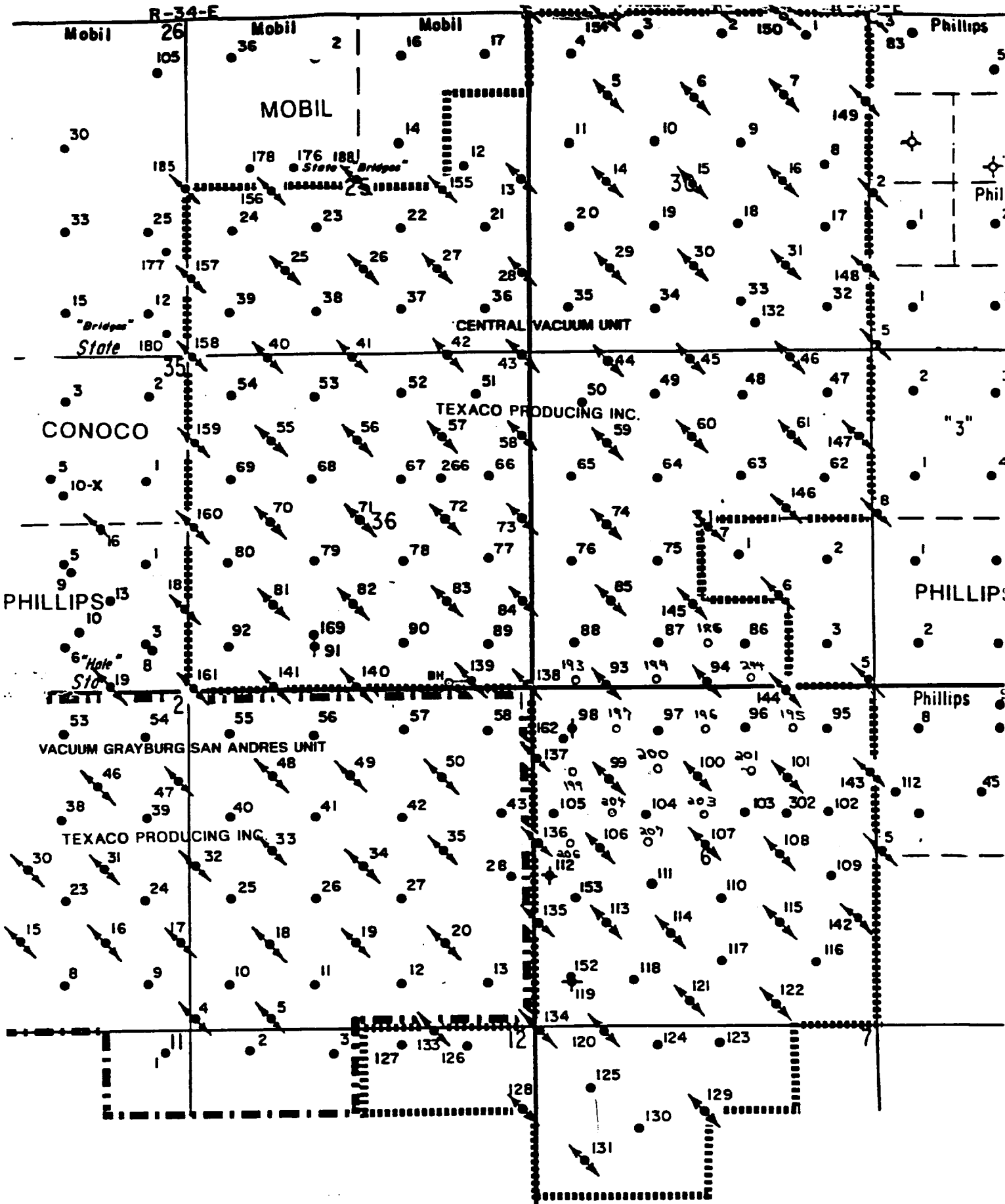
Any questions concerning this request should be directed to me at (915) 688-4606.

Yours very truly,

C. W. Howard

C. W. Howard
Engineer's Assistant

CWH:cwh cc: NMOCD, Hobbs, NM



- PROPOSED WELL
- PRODUCING WELL
- ⚡ INJECTION WELL
- ◆ SHUT-IN WELL

TEXACO
 CENTRAL VACUUM U
 VACUUM G-SA FIEL
 LEA COUNTY, NEW ME