

District I
1625 N. French Dr., Hobbs, NM 88240
District II
811 South First, Artesia, NM 88210
District III
1000 Rio Brazos Rd., Aztec, NM 87410
District IV
2040 South Pacheco, Santa Fe, NM 87505

State of New Mexico
Energy, Minerals & Natural Resources

OIL CONSERVATION DIVISION
2040 South Pacheco
Santa Fe, NM 87505

Form C-101
Revised March 12, 1999

Submit to Appropriate District Office
State Lease - 6 Copies
Fee Lease - 5 Copies

☐ AMENDED REPORT

APPLICATION FOR PERMIT TO DRILL, RE-ENTER, DEEPEN, PLUGBACK, OR ADD A ZONE

¹ Operator Name and Address. Lynx Energy Company, Inc. 2121 San Jacinto, Ste 860, LB 52 Dallas, TX 75201		² OGRID Number 175071
		³ API Number 30-025-34578
⁴ Property Code 24182	⁵ Property Name Laney Reese	⁶ Well No. 2

⁷ Surface Location

UL or lot no.	Section	Township	Range	Lot Idn	Feet from the	North/South line	Feet from the	East/West line	County
I	30	18S	39E		1751	South	886	East	Lea

⁸ Proposed Bottom Hole Location If Different From Surface

UL or lot no.	Section	Township	Range	Lot Idn	Feet from the	North/South line	Feet from the	East/West line	County

⁹ Proposed Pool 1

Hobbs San Andres East

¹⁰ Proposed Pool 2

¹¹ Work Type Code N A N	¹² Well Type Code O	¹³ Cable/Rotary R	¹⁴ Lease Type Code P	¹⁵ Ground Level Elevation 3614'
¹⁶ Multiple No	¹⁷ Proposed Depth 4700'	¹⁸ Formation San Andres	¹⁹ Contractor CapStar Drilling	²⁰ Spud Date 06/01/99

²¹ Proposed Casing and Cement Program

Hole Size	Casing Size	Casing weight/foot	Setting Depth	Sacks of Cement	Estimated TOC
12-1/4"	8-5/8"	24#	1900'	950	Surface
7-7/8"	5-1/2"	15.5#	4700'	500	1800'

²² Describe the proposed program. If this application is to DEEPEN or PLUG BACK give the data on the present productive zone and proposed new productive zone. Describe the blowout prevention program, if any. Use additional sheets if necessary.

FORMERLY: Fossil Fuels Inc Laney Reese #2 @ 1650/S & 330/E

1. Drill 12-1/4" hole to 1900', set 8-5/8" J-55, 24# ST&C on bottom. Cement with 700 sx Howco Light cement & additives, tail in with 250 sx Class "C" w/ 2% CaCl. Circulate cement to surface.
2. Drill 7-7/8" hole to 4700'. Set 5-1/2", K-55, 15.5# casing on bottom and cement with 250 sx Howco Light & additives, tail in with 250 sx Class "C" & 2% CaCl, estimated top of cement 1800'.

²³ I hereby certify that the information given above is true and complete to the best of my knowledge and belief.

Signature:

Printed name:

Dana Pearce

Title:

Production Secretary

Date:

5/24/99

Phone:

214/969-5555x240

OIL CONSERVATION DIVISION

Approved by:

Title:

Approval Date:

5/24/99

Expiration Date:

Conditions of Approval:

Attached ☐

Permit Expires 1 Year From Approval
Date Unless Drilling Underway

DISTRICT I
P.O. Box 1980, Hobbs, NM 88241-1980

DISTRICT II
P.O. Drawer DD, Artesia, NM 88211-0719

DISTRICT III
1000 Rio Brazos Rd., Aztec, NM 87410

DISTRICT IV
P.O. Box 2088, Santa Fe, NM 87504-2088

State of New Mexico
Energy, Minerals and Natural Resources Department

Form C-102
Revised February 10, 1994
Submit to Appropriate District Office
State Lease - 4 Copies
Fee Lease - 3 Copies

OIL CONSERVATION DIVISION

P.O. Box 2088
Santa Fe, New Mexico 87504-2088

☐ AMENDED REPORT

WELL LOCATION AND ACREAGE DEDICATION PLAT

API Number 30-025-34578	Pool Code 32300	Pool Name Hobbs, San Andres, East
Property Code 24182	Property Name LANEY REESE	Well Number 2
OGRID No. 175071	Operator Name LYNX ENERGY COMPANY, INC.	Elevation 3614

Surface Location

UL or lot No. 1	Section 30	Township 18 S	Range 39 E	Lot Idn	Feet from the 1751	North/South line SOUTH	Feet from the 886	East/West line EAST	County LEA
--------------------	---------------	------------------	---------------	---------	-----------------------	---------------------------	----------------------	------------------------	---------------

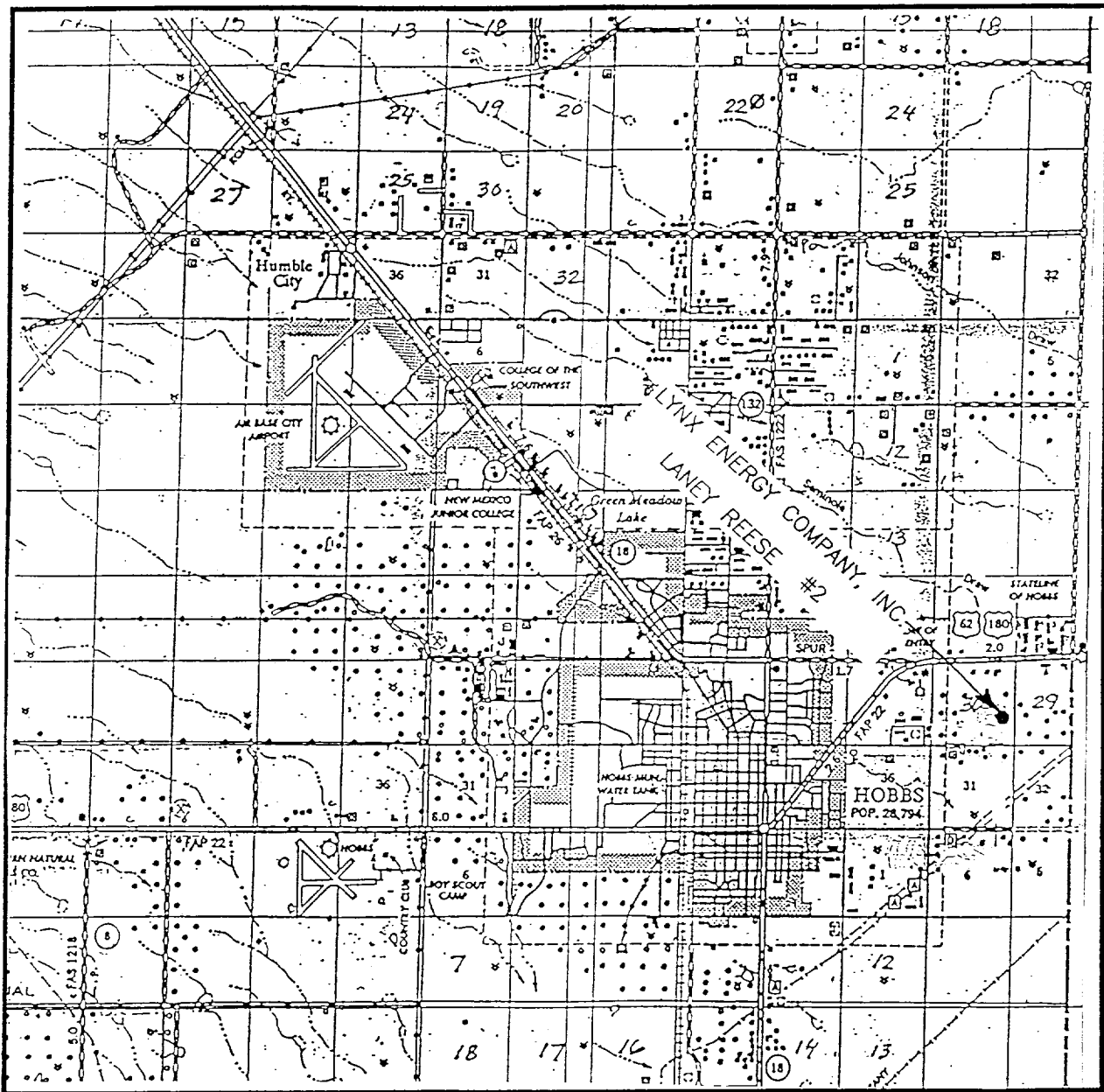
Bottom Hole Location If Different From Surface

UL or lot No.	Section	Township	Range	Lot Idn	Feet from the	North/South line	Feet from the	East/West line	County
Dedicated Acres 40					Joint or Infill	Consolidation Code	Order No.		

NO ALLOWABLE WILL BE ASSIGNED TO THIS COMPLETION UNTIL ALL INTERESTS HAVE BEEN CONSOLIDATED
OR A NON-STANDARD UNIT HAS BEEN APPROVED BY THE DIVISION

	<p>OPERATOR CERTIFICATION</p> <p>I hereby certify the the information contained herein is true and complete to the best of my knowledge and belief.</p> <p>Signature Dana Pearce</p> <p>Printed Name DANA PEARCE</p> <p>Title PROD SECRETARY</p> <p>Date 5/24/99</p>	
	<p>SURVEYOR CERTIFICATION</p> <p>I hereby certify that the well location shown on this plat was plotted from field notes of actual surveys made by me or under my supervision, and that the same is true and correct to the best of my belief.</p> <p>MAY 19, 1999</p> <p>Date Surveyed JLP</p> <p>Signature & Seal Professional Surveyor RONALD EIDSON</p> <p>NEW MEXICO 3239 5-20-99</p> <p>G.W.O. Num 99-0384</p> <p>Certificate No. RONALD EIDSON, 3239 GARY S. EIDSON, 12641 WAGON McDONALD, 12185</p>	

VICINITY MAP



SCALE: 1" = 2 MILES

SEC. 30 TWP. 18-S RGE. 39-E

SURVEY N.M.P.M.

COUNTY LEA

DESCRIPTION 1751' FSL & 886' FEL

ELEVATION 3614'

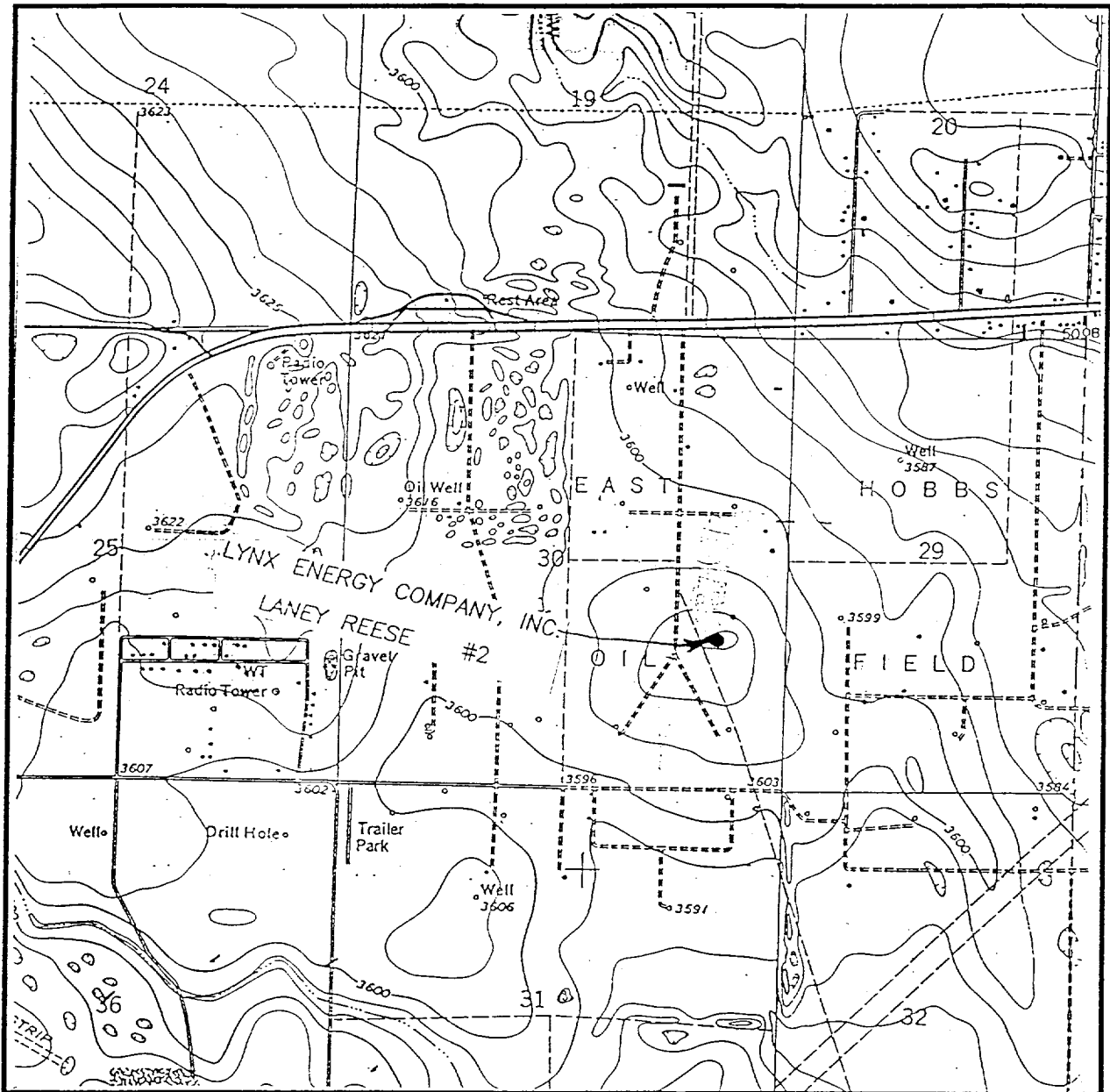
OPERATOR LYNX ENERGY COMPANY, INC.

LEASE LANEY REESE

**JOHN WEST SURVEYING
HOBBS, NEW MEXICO**

(505) 393-3117

LOCATION VERIFICATION MAP



SCALE: 1" = 2000'

CONTOUR INTERVAL — 5'

SEC. 30 TWP. 18-S RGE. 39-E

SURVEY N.M.P.M.

COUNTY LEA

DESCRIPTION 1751' FSL & 886' FEL

ELEVATION 3614'

OPERATOR LYNX ENERGY COMPANY, INC.

LEASE LANEY REESE

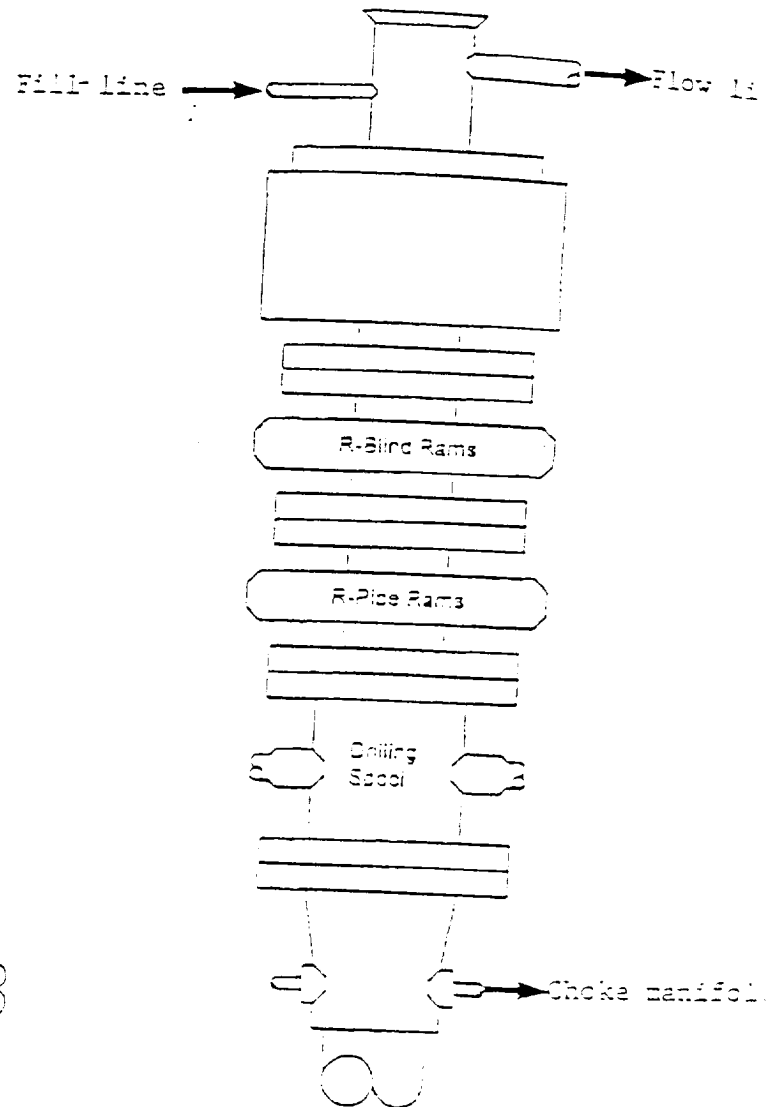
U.S.G.S. TOPOGRAPHIC MAP

HOBBS EAST, N.M.

**JOHN WEST SURVEYING
HOBBS, NEW MEXICO**

(505) 393-3117

BLOWOUT PREVENTER SYSTEM



Type 900 Series
3000 psi WP

Choke Manifold Assembly for 3M WP System

