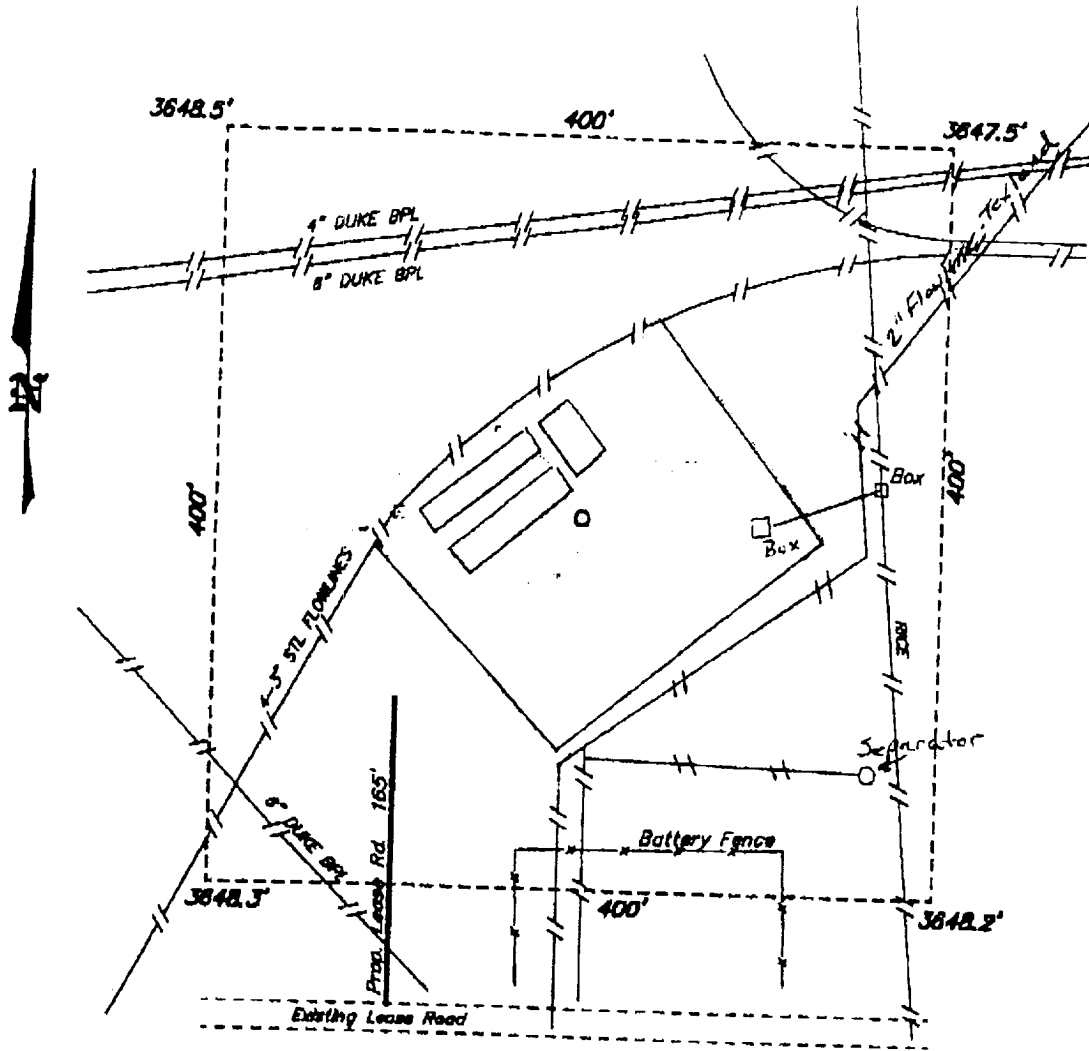
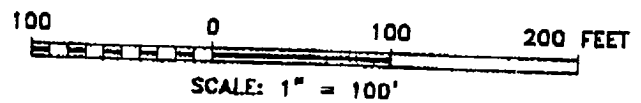


**SECTION 30, TOWNSHIP 18 SOUTH, RANGE 38 EAST, N.M.P.M.,
LEA COUNTY,
NEW MEXICO.**



The separator will be relocated off location.
The 2" flowline will be rerouted.
The pits will parallel Oxy's 3" flowlines.



BASIN SURVEYS P.O. BOX 1788 - HOBBS, NEW MEXICO

W.O. Number: 1246 Drawn By: **K. GOAD**

Date: 04-18-2001 Disk: KJG CD#4 - 1248L.DWG

TEXLAND PETROLEUM INC.

REF: Bowers "A" Fed. No. 41 / Well Pad Topo

THE BOWERS "A" FED. No. 41 LOCATED 1310' FROM
THE SOUTH LINE AND 1400' FROM THE EAST LINE OF
SECTION 30, TOWNSHIP 18 SOUTH, RANGE 38 EAST,
N.M.P.M., LEA COUNTY, NEW MEXICO.

Survey Date: 04-12-2001 Sheet