

NUMBER OF COPIES RECEIVED	
DISTRIBUTION	
SANTA FE	
FILE	
U.S.G.S.	
LAND OFFICE	
TRANSPORTER	OIL
	GAS
PRODUCTION OFFICE	
OPERATOR	

NEW MEXICO OIL CONSERVATION COMMISSION

FORM C-103
(Rev 3-55)

MISCELLANEOUS REPORTS ON WELLS

(Submit to appropriate District Office as per Commission Rule 1106)

Name of Company **Soco Mobil Oil Company, Inc.** Address **Box 2406, Hobbs, New Mexico**

Lease **State Bridges** Well No. **30** Unit Letter **G** Section **26** Township **17S** Range **34E**

Date Work Performed **11/17 thru 12/23/62** Pool **Undesignated** County **Lea**

THIS IS A REPORT OF: (Check appropriate block)

- Beginning Drilling Operations Casing Test and Cement Job Other (Explain): **Drill deeper**
- Plugging Remedial Work

Detailed account of work done, nature and quantity of materials used, and results obtained.

Gardner Brothers Drig. Co. moved in & rigged up tools. Pulled 2" tbg. & installed BOP. Ran 3 1/2" drill pipe to 4211'. Circ. hole w/water. Clean out open hole 4592-4792'. Recovered old belting & rope. Hit iron. Pulled bit & DP, left all (3) cones in hole. Had imprint of tbg. on shank of bit. Ran 6" magnetic basket on DP to 4729', no recovery. Ran 5 3/4" CD Boreon OS & jars to 4729', caught fish. Jarred fish intv. Recovered 47" of 2 3/8" tbg. w/wellar & old seating nipple. Ran 6" CD fluted mill on overshot. Fished & recovered 70' of 2 3/8" tbg. Ran mill to 4742', recovered 2 pieces of tbg. in mill. Ran bit to 4740', cleaned out & drilled 4740-4748'. Pulled bit & DP, ran DP open ended to 4748'. Halliburton cemented open hole w/350 sx Inocer heat cement. Pulled DP to 4128'. Reverse 33 sx. WOC 24 hrs. Tagged top cement @ 4439', Halliburton cemented open hole 4250-4439' w/100 sx Inocer heat cement. Pulled DP to 3770', WOC 8 hrs. Tagged top cement @ 4264'. Halliburton re-cement open hole w/100 sx Inocer heat cement. Pulled DP to 3770', reverse 20 sx cement. WOC 18 hrs. Drilled cement 3770-4100'. Tested 7" csg. w/1800# for 30 mins. Tested OK. Drilled cement to 4583', hit junk, pulled DP & bit. Ran magnetic basket to 4583', no recovery. Drilled cement 4583-4748'. Drilled 6 1/2" hole 4748-6800TD. Schlumberger ran Sonic log C-6795 and dual induction log 4250-6802'. (Continued)

Witnessed by **Earl D. Hughes** Position **Drilling Foreman** Company **Soco Mobil Oil Company, Inc.**

FILL IN BELOW FOR REMEDIAL WORK REPORTS ONLY

ORIGINAL WELL DATA

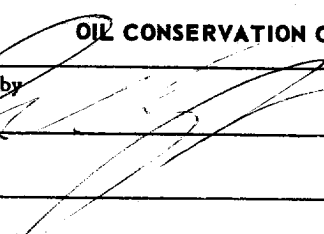
DF Elev.	TD	PBTD	Producing Interval	Completion Date
Tubing Diameter	Tubing Depth	Oil String Diameter	Oil String Depth	
Perforated Interval(s)				
Open Hole Interval		Producing Formation(s)		

RESULTS OF WORKOVER

Test	Date of Test	Oil Production BPD	Gas Production MCFPD	Water Production BPD	GOR Cubic feet/Bbl	Gas Well Potential MCFPD
Before Workover						
After Workover						

OIL CONSERVATION COMMISSION

I hereby certify that the information given above is true and complete to the best of my knowledge.

Approved by  Name **J. J. McDaniel**

Title _____ Position **Group Supervisor**

Date _____ Company **Soco Mobil Oil Company, Inc.**

Socony Mobil Oil Company, Inc.

State Bridges #30, Unit G
Sec. 26, T-17S, R-34E, Lea
County, New Mexico

Set 1739' of 15.5# J-55 5" liner & 992' of 17# J-55 5½" liner @ 6800'.
Top of liner @ 4069' w/top of 5" @ 5061'. Cemented w/200 ex Incor
4½ Gel + 75 ex Neat cement. Plug down @ 12:45 AM 12/9/62. Circ. 50 ex
cement. WOC 24 hrs. Tested eng., top of liner & liner w/1800# for 30
mins. Tested OK. Released Gardner Brothers Drlg. Co. 8 AM 12/10/62.
Moved in & rigged up Clarke Well Service. Displaced water to oil.
Frontier ran Isotron & collar log 4600-6756'. Frontier perf. Paddeok
formation 6418, 6422, 6425, 6427, 6430, 6455, 6462, 6472, 6476, 6480,
6489, 6626, 6631, 6646, 6648, 6657, 6666, 6668, 6672, 6674, 6679, 6703,
6706, 6710, 6715 w/1 Jet shot/ft. Ran 2 3/8" tbg. to 6417, Guiberson
pkr. @ 6351'. Swab 20 BLO in 2½ hrs. Pulled 2 3/8" tbg. & Guiberson
pkr., reran tbg., pkr. & ret. bridge plug. Set bridge plug @ 6731',
tbg. 6606', pkr. 6539'. Swab 19 BLO in 4½ hrs. Swab dry 1 hr. The
Western Co. acidised perms. 6622-6715' w/500 gals. 15% NE Acid + 10 RCN
ball sealers. Break down pr. 5000#. TP 3600-4300#, rate 2.6 BPM.
ISIP 3600#, 5 min. SIP 2200#. Swab 28 BLO + 1 BAW in 6 hrs. Swab dry
2 hrs. Moved ret. bridge plug to 6515', tbg. 6464', pkr. 6397'. The
Western Co. acidised perms. 6418-6489 w/500 gals. 15% NE Acid + 6 ball
sealers. Brk. down pr. 4200#, treating pr. 4200-3900#, rate 2.4 BPM.
ISIP 3000#. Swab 26 BLO + 5 BAW in 3 hrs., swab dry 1 hr. Pulled tbg.
pkr. & bridge plug. Ran 4½" tbg. w/Guiberson pkr. set in 5½" liner @
4077'. The Western Co. sand oil frac. Paddeok perms. w/20,000 gals.
refined oil + 40,000# 20-40 sand + 1/40#/gal Addomite + 18 RCN ball
sealers. Brk. down pr. 4600#, treating pr. 4600-5200#, rate 20.9 BPM
ISIP 3700#. SI 7½ hrs. TP 2050#. Bled 93 BLO in 9 hrs. TP 0#. Pulled
4½" tbg. Ran 2 3/8" tbg. w/Guiberson pkr. Tbg. @ 6497', tbg. perms.
6463-66', seating nipple 6462' & pkr. @ 6400'. Swab & flow 727 BLO +
30 BNO + 18 BAW + 139 BSW in 108 hrs.

On NMOCC potential test flowed 100 BNO + 7 BSW in 24 hrs. 20/64" ch.
GCR 200, Qty. 36.7° @ 60°, TP 100#, CP pkr. Completed 12/21/62.

NEW MEXICO OIL CONSERVATION COMMISSION

Well Location and Acreage Dedication Plat

Section A.

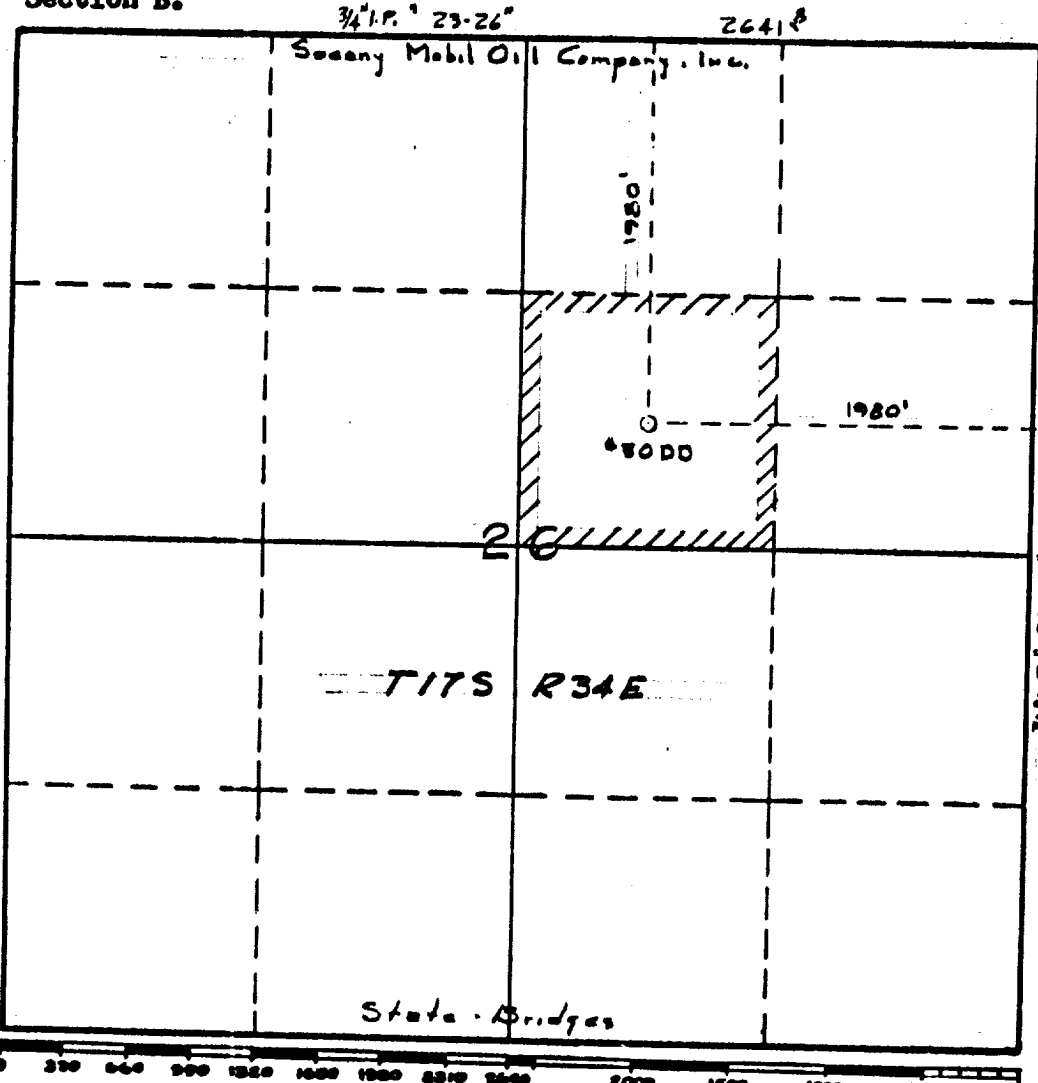
Date November 21, 1962

Operator Socony Mobil Oil Company, Inc. Lease State Bridges
 Well No. 30 Unit Letter G Section 26 Township 17S Range 34E NMPM
 Located 1980 Feet From North Line, 1980 Feet From East Line
 County Ira G. L. Elevation 4030 Dedicated Acreage 40 Acres
 Name of Producing Formation Yeso Pool Undesignated

1. Is the Operator the only owner* in the dedicated acreage outlined on the plat below?
Yes X No _____.
2. If the answer to question one is "no," have the interests of all the owners been consolidated by communitization agreement or otherwise? Yes _____ No _____. If answer is "yes," Type of Consolidation _____.
3. If the answer to question two is "no," list all the owners and their respective interests below:

<u>Owner</u>	<u>Land Description</u>

Section B.



1/4 T.P. "23-24-25-26"

This is to certify that the information in Section A above is true and complete to the best of my knowledge and belief.

Socony Mobil Oil Co., Inc.
 (Operator)
J. J. McNamee
 (Representative)
 Box 2406, Hobbs, New Mexico
 Address

This is to certify that the well location shown on the plat in Section B was plotted from field notes of actual surveys made by me or under my supervision and that the same is true and correct to the best of my knowledge and belief.

Date Surveyed _____

Registered Professional Engineer and/or Land Surveyor.

Certificate No. _____