

NO. OF COPIES RECEIVED		
DISTRIBUTION		
SANTA FE		
FILE		
U.S.G.S.		
LAND OFFICE		
OPERATOR		

NEW MEXICO OIL CONSERVATION COMMISSION

Form C-101
Revised 1-1-65

5A. Indicate Type of Lease
STATE FEE

5. State Oil & Gas Lease No.
B-1520

APPLICATION FOR PERMIT TO DRILL, DEEPEN, OR PLUG BACK

1a. Type of Work

b. Type of Well DRILL DEEPEN PLUG BACK

OIL WELL GAS WELL OTHER SINGLE ZONE MULTIPLE ZONE

2. Name of Operator
Mobil Oil Corporation

3. Address of Operator
P. O. Box 633, Midland, Texas 79701

4. Location of Well UNIT LETTER D LOCATED 560 FEET FROM THE North LINE
AND 560 FEET FROM THE West LINE OF SEC. 23 TWP. 17S RGE. 34E NMPM

7. Unit Agreement Name

8. Farm or Lease Name
Bridges State

9. Well No.
155

10. Field and Pool, or Wildcat
Undesignated

12. County
Lea

19. Proposed Depth 8800'
19A. Formation Abo
20. Rotary or C.T. Rotary

21. Elevations (Show whether DF, RT, etc.) 4032 G.L.
21A. Kind & Status Plug. Bond On File
21B. Drilling Contractor Marcum Drilling Co.
22. Approx. Date Work will start February 18, 1971

23. PROPOSED CASING AND CEMENT PROGRAM

SIZE OF HOLE	SIZE OF CASING	WEIGHT PER FOOT	SETTING DEPTH	SACKS OF CEMENT	EST. TOP
12 1/4	8 5/8	23.0#	1750	circulate	surface
7 7/8	5 1/2	15.5#	1043		
7 7/8	5 1/2	14.0#	5374	circulate	Above Yates
7 7/8	5 1/2	15.5#	7049		Zone @ approx.
7 7/8	5 1/2	17.0#	8651		2900'
7 7/8	5 1/2	17.0#	T.D.		

Mud Program
0 - 1775 spud mud
1775 - 8500 brine water w/additions of oil as necessary
8500 - T.D. brine water w/salt gel and starch

Logging Program
1770 - T.D. Open hole - GR-SNP Caliper
2800 - T.D. Open hole - Dual Laterolog 9

5-4-71

20578

IN ABOVE SPACE DESCRIBE PROPOSED PROGRAM; IF PROPOSAL IS TO DEEPEN OR PLUG BACK, GIVE DATA ON PRESENT PRODUCTIVE ZONE AND PROPOSED NEW PRODUCTIVE ZONE. GIVE BLOWOUT PREVENTER PROGRAM, IF ANY.

I hereby certify that the information above is true and complete to the best of my knowledge and belief.

Signed J. H. Seerey J. H. Seerey Title Associate Engineer Date January 29, 1971

APPROVED BY [Signature] TITLE SUPERVISOR DISTRICT 1 DATE FEB 4 1971

CONDITIONS OF APPROVAL, IF ANY:

NEW MEXICO OIL CONSERVATION COMMISSION
WELL LOCATION AND ACREAGE DEDICATION PLAT

Form O-102
Supersedes O-128
Effective 1-1-65

All distances must be from the outer boundaries of the Section.

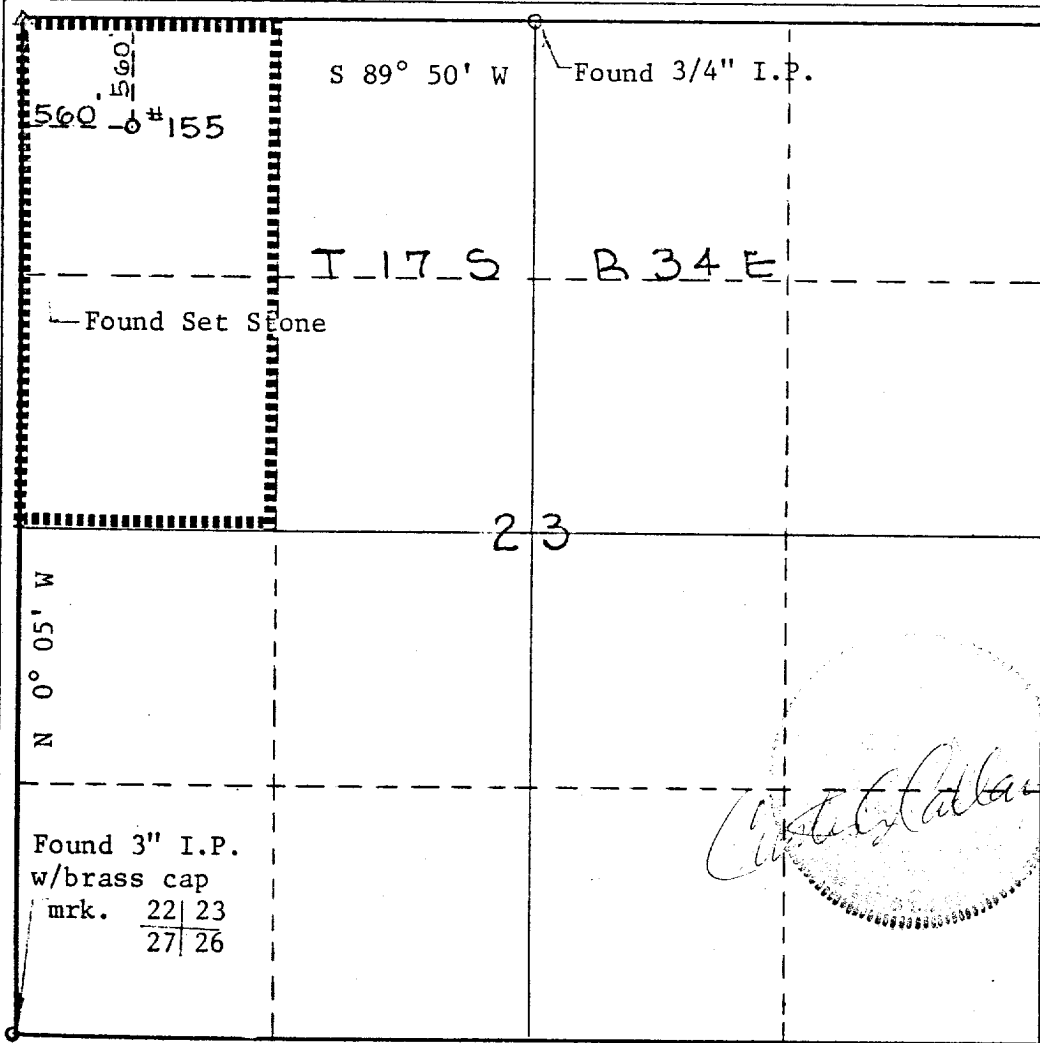
Operator Mobil Oil Corporation		Lease Bridges State		Well No. 155
Unit Letter D	Section 23	Township 17-S	Range 34-E	County Lea
Actual Footage Location of Well: 560 feet from the North line and 560 feet from the West line				
Ground Level Elev. 4032	Producing Formation Abo	Pool Undesignated	Dedicated Acreage: 80 Acres	

1. Outline the acreage dedicated to the subject well by colored pencil or hachure marks on the plat below.
2. If more than one lease is dedicated to the well, outline each and identify the ownership thereof (both as to working interest and royalty).
3. If more than one lease of different ownership is dedicated to the well, have the interests of all owners been consolidated by communitization, unitization, force-pooling, etc?

Yes No If answer is "yes," type of consolidation _____

If answer is "no," list the owners and tract descriptions which have actually been consolidated. (Use reverse side of this form if necessary.) _____

No allowable will be assigned to the well until all interests have been consolidated (by communitization, unitization, forced-pooling, or otherwise) or until a non-standard unit, eliminating such interests, has been approved by the Commission.



CERTIFICATION	
<i>I hereby certify that the information contained herein is true and complete to the best of my knowledge and belief.</i>	
Name	<i>J. H. Seerey</i>
Position	J. H. Seerey
	Associate Engineer
Company	Mobil Oil Corporation
Date	February 1, 1971
<i>I hereby certify that the well location shown on this plat was plotted from field notes of actual surveys made by me or under my supervision, and that the same is true and correct to the best of my knowledge and belief.</i>	
Date Surveyed	January 27, 1971
	Registered Professional Engineer and/or Land Surveyor
	<i>Curtis A. Callaway</i>
	Curtis A. Callaway
Certificate No.	3342

111

ED

FEB 2 1971

COMM