

NO. OF COPIES RECEIVED		
DISTRIBUTION		
SANTA FE		
FILE		
U.S.G.S.		
LAND OFFICE		
OPERATOR		

NEW MEXICO OIL CONSERVATION COMMISSION

Form C-101
Revised 1-1-65

5A. Indicate Type of Lease
STATE FEE

5. State Oil & Gas Lease No.

APPLICATION FOR PERMIT TO DRILL, DEEPEN, OR PLUG BACK

1a. Type of Work

b. Type of Well DRILL DEEPEN PLUG BACK
 OIL WELL GAS WELL OTHER SINGLE ZONE MULTIPLE ZONE

2. Name of Operator
Texaco Inc.

3. Address of Operator
P. O. Box 3109 Midland, Texas 79702

4. Location of Well
UNIT LETTER **F** LOCATED **2630** FEET FROM THE **North** LINE
AND **2560** FEET FROM THE **West** LINE OF SEC. **30** TWP. **17-S** RGE. **35-E** SMPM

7. Unit Agreement Name

8. Farm or Lease Name
Central Vacuum Unit

9. Well No.
15

10. Field and Pool, or Wildcat
Vacuum Grayburg-S.A.

12. County
Lea

18. Proposed Depth
4800'

19A. Formation
Grayburg-S.A.

20. Rotary or C.T.
Rotary

21. Elevations (Show whether DF, RL, etc.)
3984' GR

21A. Kind & Status Plug, Bond

21B. Drilling Contractor

22. Approx. Date Work will start
1-27-78

PROPOSED CASING AND CEMENT PROGRAM

SIZE OF HOLE	SIZE OF CASING	WEIGHT PER FOOT	SETTING DEPTH	SACKS OF CEMENT	EST. TOP
11"	8 5/8"	24#K-55 STC	350'	200 sx	Circulate
7 7/8"	4 1/2"	10.5#K-55STC	4800'	2800 sx	Circulate

Surface Casing: 200 sx class "C" w/2% Cacl, 14.8#/gal < 300% to circulate-cement must circulate.

Production Casing: Cement first stage w/250 sx Halliburton Lite w/5#/sx Gilsonite & 8#/sx salt followed by 500 sx class "C" cement with 8#/sx salt & 1/2% CFR-2; open DV tool @ 2500' circulate 4-6 hrs. Second stage 1800 sx Halliburton Lite w/18% salt + 250 sx class "C" cement w/18% salt.

IN ABOVE SPACE DESCRIBE PROPOSED PROGRAM; IF PROPOSAL IS TO DEEPEN OR PLUG BACK, GIVE DATA ON PRESENT PRODUCTIVE ZONE AND PROPOSED NEW PRODUCTIVE ZONE. GIVE BLOWOUT PREVENTER PROGRAM, IF ANY.

I hereby certify that the information above is true and complete to the best of my knowledge and belief.

Signed Dale Holloman Title Assistant Div. Petr. Engr. Date 1-13-78

(This space for State Use)

APPROVED BY [Signature] TITLE SUBSTANTIAL ASSISTANT DATE 1-13-78

CONDITIONS OF APPROVAL, IF ANY:

RECEIVED

JAN 24 1978

CIL CONSULTATION COMM.
HOBBS, N. M.

NEW MEXICO OIL CONSERVATION COMMISSION
WELL LOCATION AND ACREAGE DEDICATION PLAT

Form C-102
Supersedes C-128
Effective 1-1-65

All distances must be from the outer boundaries of the Section.

Operator Texaco Inc.		Lease Central Vacuum Unit			Well No. 15
Unit Letter F	Section 30	Township 17-S	Range 35-E	County Lea	

Actual Footage Location of Well:
2630 feet from the **North** line and **2560** feet from the **West** line **Sec. 30**

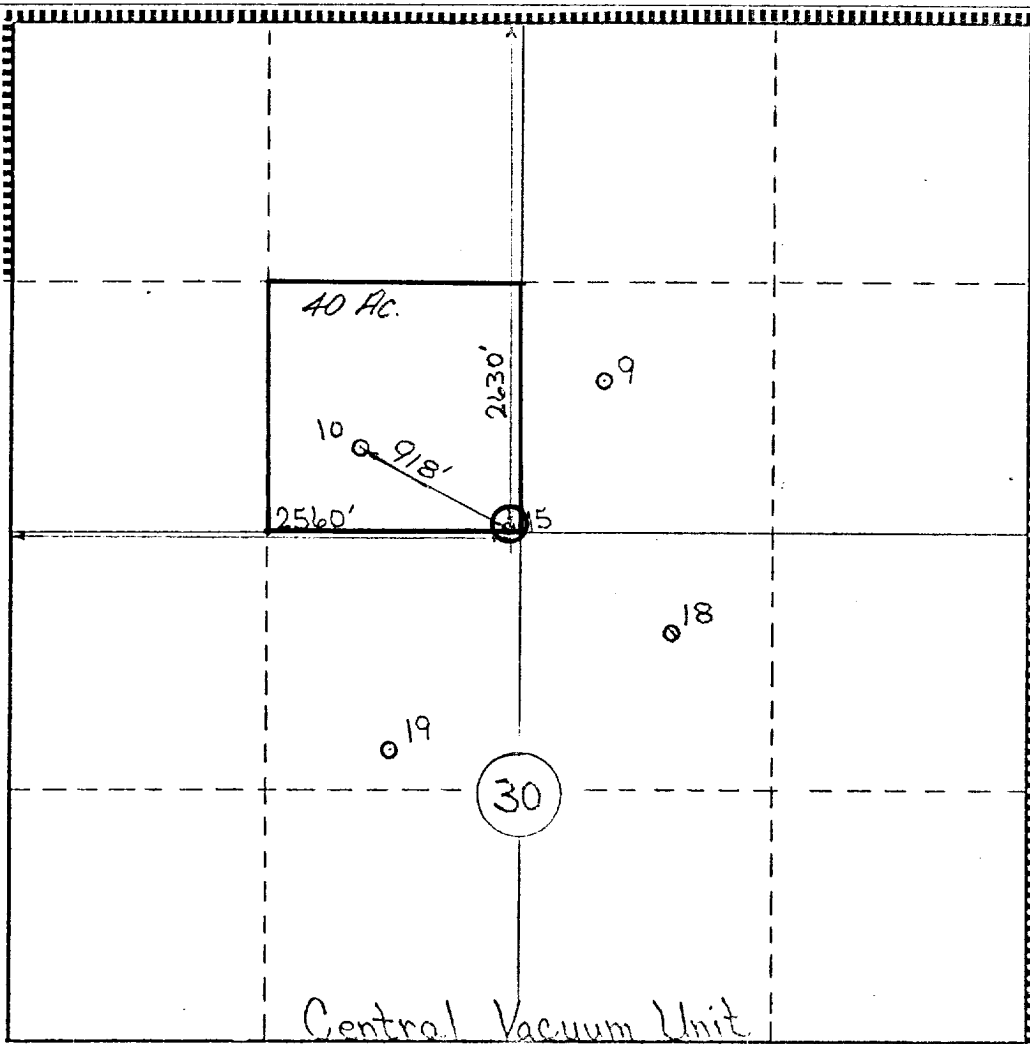
Ground Level Elev: 3984'	Producing Formation Grayburg-San Andres	Pool Vacuum Grayburg San Andres	Dedicated Acreage: 40 Acres
------------------------------------	---	---	---------------------------------------

1. Outline the acreage dedicated to the subject well by colored pencil or hachure marks on the plat below.
2. If more than one lease is dedicated to the well, outline each and identify the ownership thereof (both as to working interest and royalty).
3. If more than one lease of different ownership is dedicated to the well, have the interests of all owners been consolidated by communitization, unitization, force-pooling, etc?

Yes No If answer is "yes," type of consolidation _____

If answer is "no," list the owners and tract descriptions which have actually been consolidated. (Use reverse side of this form if necessary.) _____

No allowable will be assigned to the well until all interests have been consolidated (by communitization, unitization, forced-pooling, or otherwise) or until a non-standard unit, eliminating such interests, has been approved by the Commission.



CERTIFICATION

I hereby certify that the information contained herein is true and complete to the best of my knowledge and belief.

B. L. Eiland

Name
B. L. Eiland
Position
Division Surveyor

Company
Texaco Inc.

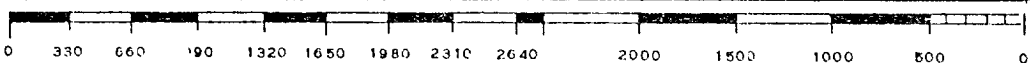
Date
1-13-78

I hereby certify that the well location shown on this plat was plotted from field notes of actual surveys made by me or under my supervision, and that the same is true and correct to the best of my knowledge and belief.

Date Surveyed
1-9-78

Registered Professional Engineer and/or Land Surveyor
B. L. Eiland
B. L. Eiland

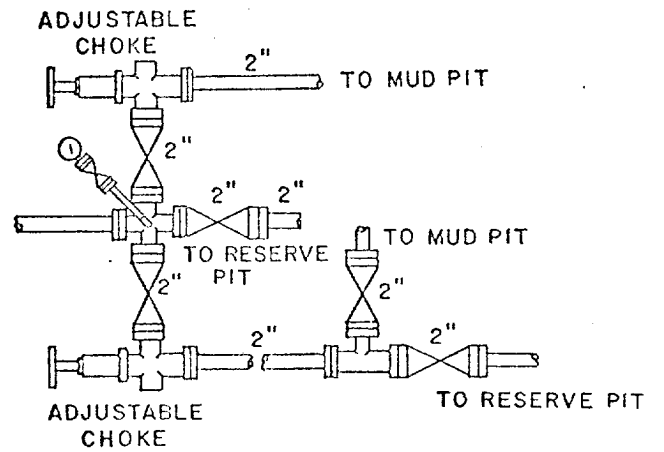
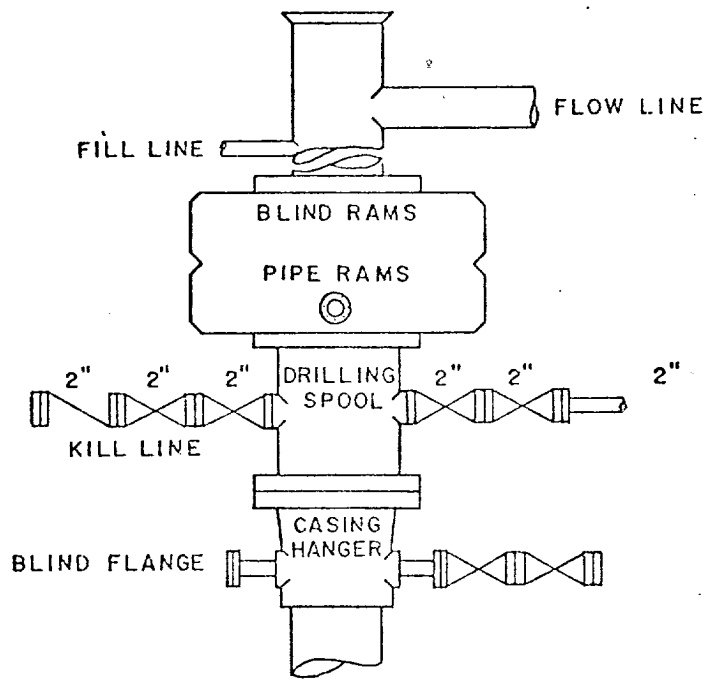
Certificate No.
4386




RECEIVED

JAN 24 1978

OIL CONSERVATION COMM.
HOBBS, N. M.



SCALE: NONE	DATE	EST. NO.	DRG. NO.
DRAWN BY JWD			
CHECKED BY RDW			
APPROVED BY			



TEXACO, INC.
 PRODUCING DEPARTMENT-U.S. (EAST)
 MIDLAND, TEXAS




EXHIBIT "B"

RECEIVED

JAN 24 1978

OIL CONSERVATION COMM.
HOBBS, N. M.

177