

NEW MEXICO OIL CONSERVATION COMMISSION  
WELL LOCATION AND ACREAGE DEDICATION PLAT

Form No. 1  
Supersedes Form No. 1  
1-1-68

All bearings must be from the outer boundary of the Section

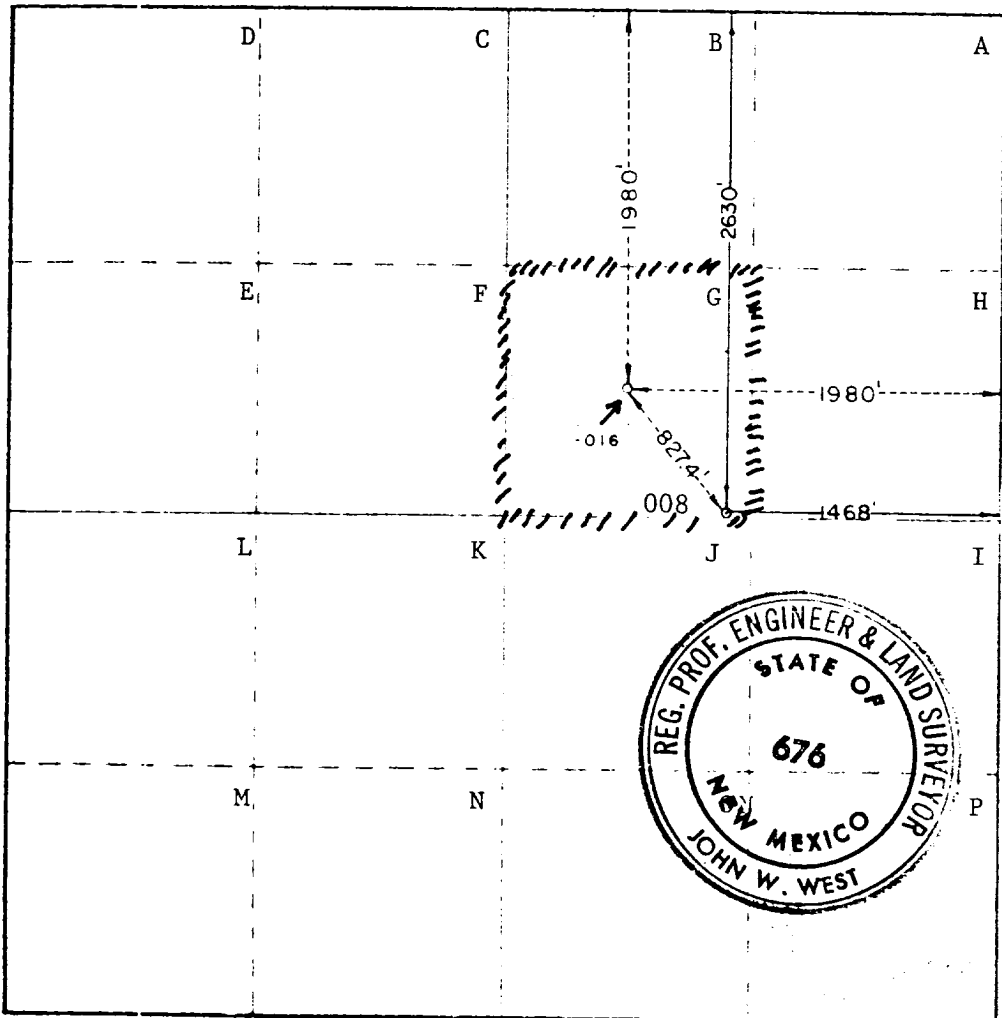
|                            |                     |                         |                            |      |
|----------------------------|---------------------|-------------------------|----------------------------|------|
| PHILLIPS PETROLEUM COMPANY |                     | E.V.G.S.A.U. Tract 3202 |                            | -008 |
| Section                    | 32                  | 17 SOUTH                | 35 EAST                    | LEA  |
| Actual location of well:   |                     |                         |                            |      |
| 2630                       | feet from the NORTH | 1468                    | feet from the EAST         |      |
| Ground level Elev.         | Producing Formation |                         | Trap                       |      |
| 3956.6<br>(Unprepared)     | Grayburg/San Andres |                         | Vacuum Grayburg/San Andres |      |

- Outline the acreage dedicated to the subject well by colored pencil or hachure marks on the plat below.
- If more than one lease is dedicated to the well, outline each and identify the ownership thereof (both as to working interest and royalty)
- If more than one lease of different ownership is dedicated to the well, have the interests of all owners been consolidated by communitization, unitization, force-pooling, etc?
 

Yes     No    If answer is "yes," type of consolidation \_\_\_\_\_

If answer is "no," list the owners and tract descriptions which have actually been consolidated (Use reverse side of this form if necessary.) \_\_\_\_\_

No allowable will be assigned to the well until all interests have been consolidated (by communitization, unitization, forced-pooling, or otherwise) or until a non-standard unit, eliminating such interests, has been approved by the Commission.



CERTIFICATION

I hereby certify that the information contained herein is true and complete to the best of my knowledge and belief.

*W. J. Mueller*

W. J. Mueller

Position: Sr. Engineering Specialist

Employed by: Phillips Petroleum Company

Date: July 12, 1979

I hereby certify that the well location shown on this plat was plotted from field notes of actual surveys made by me or under my supervision and that the same is true and correct to the best of my knowledge and belief.

Date: JULY 6TH, 1979

*John W. West*

Certificate No. John W. West 676

Ronald J. F. Ann 3230

