

OIL CONSERVATION DIVISIO.

STATE OF NEW MEXICO
ENERGY AND MINERALS DEPARTMENT

P. O. BOX 2088
SANTA FE, NEW MEXICO 87501

Form C-102
Revised 10-1-78

All distances must be from the outer boundaries of the Section.

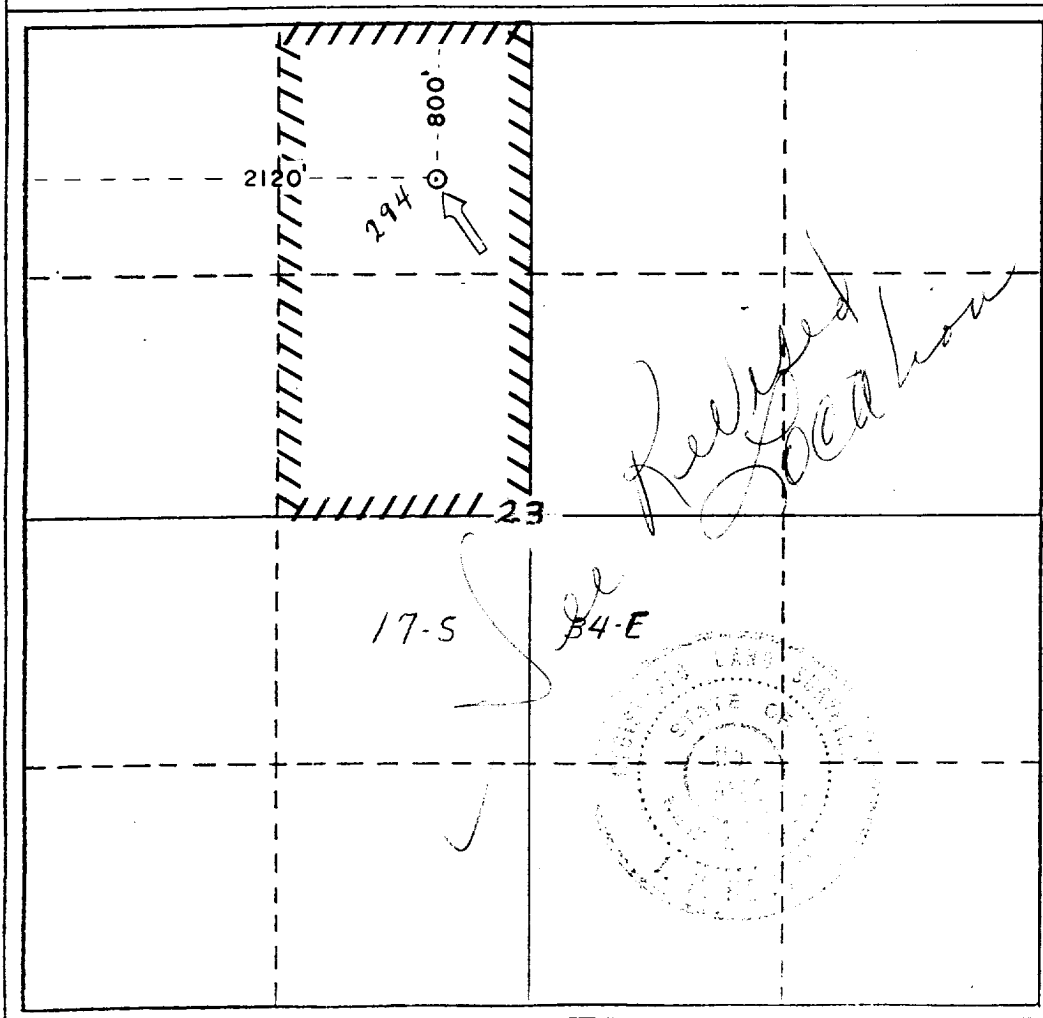
Operator <i>Mobil Producing Texas & New Mexico, Inc.</i>		Lease <i>North Vacuum Abo Unit</i>			Well No. <i>294</i>
Unit Letter <i>C</i>	Section <i>23</i>	Township <i>17 S</i>	Range <i>34 E</i>	County <i>Lea County</i>	
Actual Footage Location of Well: <i>2120'</i> feet from the <i>West</i> line and <i>800'</i> feet from the <i>North</i> line					
Ground Level Elev. <i>4030</i>	Producing Formation <i>Abo</i>	Pool <i>North Vacuum Abo</i>			Dedicated Acreage: <i>(2 Wells) 80</i> Acres

1. Outline the acreage dedicated to the subject well by colored pencil or hachure marks on the plat below.
2. If more than one lease is dedicated to the well, outline each and identify the ownership thereof (both as to working interest and royalty).
3. If more than one lease of different ownership is dedicated to the well, have the interests of all owners been consolidated by communitization, unitization, force-pooling, etc?

Yes No If answer is "yes," type of consolidation Unitized

If answer is "no," list the owners and tract descriptions which have actually been consolidated. (Use reverse side of this form if necessary.) _____

No allowable will be assigned to the well until all interests have been consolidated (by communitization, unitization, forced-pooling, or otherwise) or until a non-standard unit, eliminating such interests, has been approved by the Division.



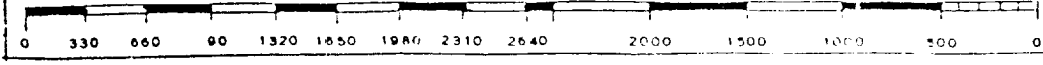
CERTIFICATION

I hereby certify that the information contained herein is true and complete to the best of my knowledge and belief.

Name
C. C. Bond for G. E. Tate
Position
Env. & Reg. Manager
Company
Mobil Producing Tx & NM, Inc.
Date
12-20-85

I hereby certify that the well location shown on this plat was plotted from field notes of actual surveys made by me or under my supervision, and that the same is true and correct to the best of my knowledge and belief.

Date Surveyed
December 19, 1985
Registered Professional Engineer and/or Land Surveyor:
J. A. Newton
Certificate No.
5109



Rec'd 4-30-86

111

RECEIVED

DEC 23 1985

G.C.D.
HOBBS OFFICE