

Submit to Appropriate  
District Office  
State Lease - 4 copies  
Fee Lease - 3 copies

State of New Mexico  
Energy, Minerals and Natural Resources Department

Form C-102  
Revised 1-1-89

OIL CONSERVATION DIVISION

DISTRICT I  
P.O. Box 1980, Hobbs, NM 88240

P.O. Box 2088

Santa Fe, New Mexico 87504-2088

DISTRICT II  
P.O. Drawer DD, Artesia, NM 88210

DISTRICT III  
1000 Rio Brazos Rd., Aztec, NM 87410

WELL LOCATION AND ACREAGE DEDICATION PLAT

All Distances must be from the outer boundaries of the section

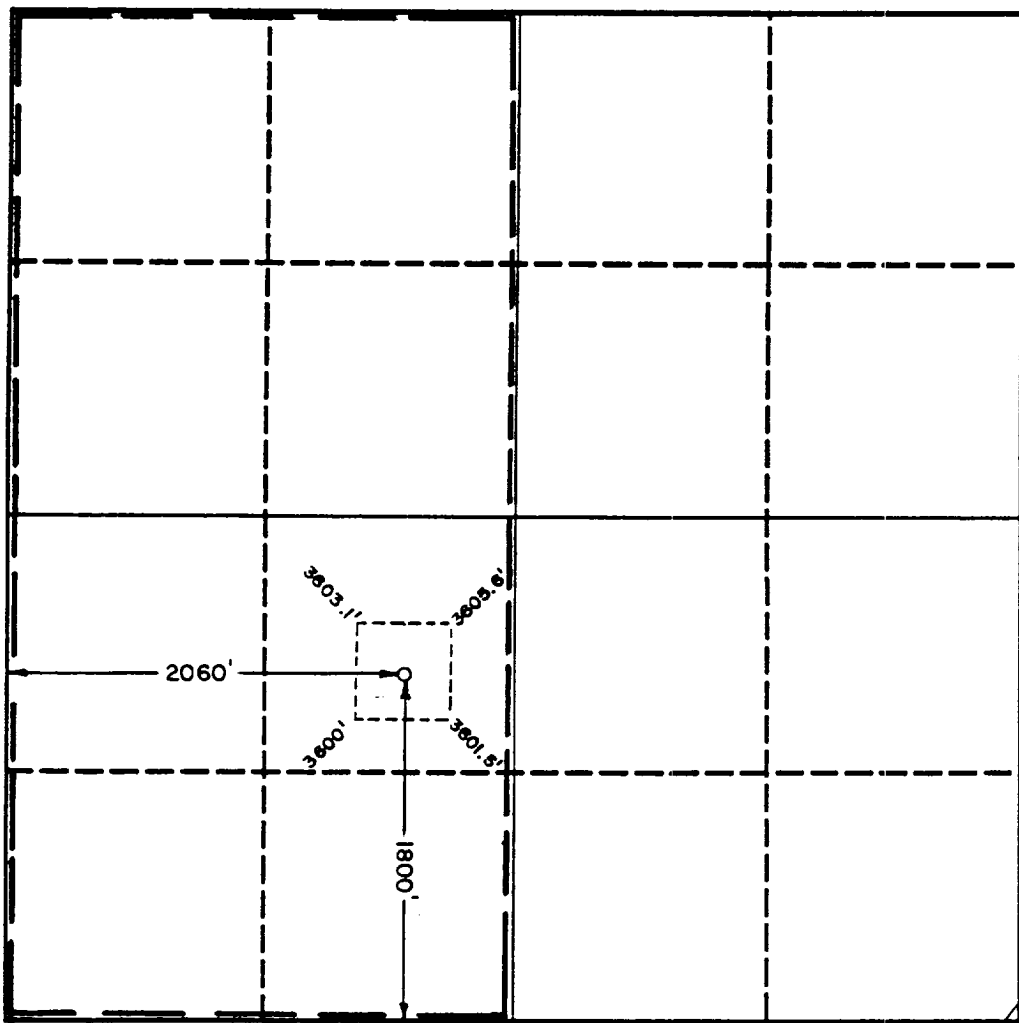
Operator Union Oil Company of California			Lease North Maduro Federal Unit		Well No. 2
Unit Letter K	Section 20	Township 19 South	Range 33 East	County NMPM	Lea
Actual Footage Location of Well: 1800 feet from the south line and 2060 feet from the west line					
Ground level Elev. 3606.0'	Producing Formation MORROW		Pool GEM MORROW GAS	Dedicated Acreage: 320 Acres	

- Outline the acreage dedicated to the subject well by colored pencil or hectare marks on the plat below.
- If more than one lease is dedicated to the well, outline each and identify the ownership thereof (both as to working interest and royalty).
- If more than one lease of different ownership is dedicated to the well, have the interest of all owners been consolidated by communitization, unitization, force-pooling, etc.?
 

Yes     No    If answer is "yes" type of consolidation UNITIZATION

If answer is "no" list the owners and tract descriptions which have actually been consolidated. (Use reverse side of this form if necessary.)

No allowable will be assigned to the well until all interests have been consolidated (by communitization, unitization, forced-pooling, or otherwise) or until a non-standard unit, eliminating such interest, has been approved by the Division.



OPERATOR CERTIFICATION

I hereby certify that the information contained herein is true and complete to the best of my knowledge and belief.

Signature  
*Arthur R. Brown*

Printed Name  
Arthur R. Brown

Position  
Agent

Company  
UNION OIL COMPANY OF CALIF.

Date  
JULY 12, 1989

SURVEYOR CERTIFICATION

I hereby certify that the well location shown on this plat was plotted from field notes of actual surveys made by me or under my supervision, and that the same is true and correct to the best of my knowledge and belief.

Date Surveyed  
June 28, 1989

Signature & Seal of Professional Surveyor

Certificate No. *John W. West*  
JOHN W. WEST, 678  
RONALD J. EIDSON, 3229