

Submit to Appropriate District Office
 State Lease -- 6 copies
 Fee Lease -- 5 copies

State of New Mexico
 Energy, Minerals and Natural Resources Department

Form C-101
 Revised 1-1-89

OIL CONSERVATION DIVISION
 P.O. Box 2088
 Santa Fe, New Mexico 87504-2088

DISTRICT I
 P.O. Box 1980, Hobbs, NM 88240

DISTRICT II
 P.O. Drawer DD, Artesia, NM 88210

DISTRICT III
 1000 Rio Brazos Rd., Aztec, NM 87410

API NO. (assigned by OCD on New Wells)
 30-025-31869

5. Indicate Type of Lease
 STATE FEE

6. State Oil & Gas Lease No.
 B-1520-1

APPLICATION FOR PERMIT TO DRILL, DEEPEN, OR PLUG BACK

1a. Type of Work:
 DRILL RE-ENTER DEEPEN PLUG BACK
 b. Type of Well:
 OIL WELL GAS WELL OTHER WATER INJECTION SINGLE ZONE MULTIPLE ZONE

7. Lease Name or Unit Agreement Name
 VACUUM GLORIETA WEST UNIT
 011125

2. Name of Operator
 TEXACO EXPLORATION AND PRODUCTION INC. 022351

8. Well No.
 27

3. Address of Operator
 P. O. Box 3109, Midland, Texas 79702

9. Pool name or Wildcat
 VACUUM GLORIETA 62160

4. Well Location
 Unit Letter I : 2359 Feet From The SOUTH Line and 64 Feet From The EAST Line
 Section 26 Township 17-SOUTH Range 34-EAST NMPM LEA County

10. Proposed Depth 6288'
 11. Formation GLORIETA/PADDOCK
 12. Rotary or C.T. ROTARY

13. Elevations (Show whether DF, RT, GR, etc.) GR-4012'
 14. Kind & Status Plug. Bond BLANKET
 15. Drilling Contractor TMBR/SHARP
 16. Approx. Date Work will start FEBRUARY 15, 1993

17. PROPOSED CASING AND CEMENT PROGRAM

SIZE OF HOLE	SIZE OF CASING	WEIGHT PER FOOT	SETTING DEPTH	SACKS OF CEMENT	EST. TOP
11	8 5/8	24#	1550'	650	SURFACE
7 7/8	5 1/2	15.5# & 17#	6288'	1700	SURFACE

CEMENTING PROGRAM:
 SURFACE CASING - 450 SX CLASS C w/ 4% GEL & 2% CaCl2 (13.5ppg, 1.74cf/s, 9.1gw/s). F/B 200 SX CLASS C w/ 2% CaCl2 (14.8ppg, 1.34cf/s, 6.3gw/s).
 PRODUCTION CASING - 1st STG: 350 SX CLASS H w/ 1/4# FLOCELE (15.6ppg, 1.18cf/s, 5.2gw/s).
 DV TOOL @ 5000' - 2nd STG: 1250 SX 35/65 POZ CLASS H w/ 6% GEL, 5% SALT & 1/4# FLOCELE (12.8ppg, 1.94cf/s, 10.4gw/s). F/B 100 SX CLASS H (15.6ppg, 1.18cf/s, 5.2gw/s).

MOBIL OPERATES A WELL IN THIS QUARTER QUARTER SECTION AND HAS BEEN FURNISHED A COPY OF THIS APD.

UNORTHODOX LOCATION - GRANTED UNDER ORDER No. R-9714. LOCATION WAS MOVED BECAUSE OF A PIPELINE. APPROVAL FOR THE AMENDED LOCATION HAS BEEN APPLIED FOR IN SANTA FE. (COPY ATTACHED)

IN ABOVE SPACE DESCRIBE PROPOSED PROGRAM: IF PROPOSAL IS TO DEEPEN OR PLUG BACK, GIVE DATA ON PRESENT PRODUCTIVE ZONE AND PROPOSED NEW PRODUCTIVE ZONE. GIVE BLOWOUT PREVENTER PROGRAM, IF ANY.

I hereby certify that the information above is true and complete to the best of my knowledge and belief.

SIGNATURE C. P. Basham /cwh TITLE DRILLING OPERATIONS MANAGER DATE 01-14-93

TYPE OR PRINT NAME C. P. BASHAM TELEPHONE NO. (915) 688-4620

(This space for State Use) ORIGINAL SIGNED BY JERRY SEXTON DISTRICT I SUPERVISOR

FEB 05 1993

APPROVED BY _____ TITLE _____ DATE _____

CONDITIONS OF APPROVAL, IF ANY:

R-9714 as amended NSL

Permit Expires 6 Months From Approval Date Unless Drilling Underway.

Submit to Appropriate District Office
 State Lease - 4 copies
 Fee Lease - 3 copies

State of New Mexico
 Energy, Minerals and Natural Resources Department

Form C-102
 Revised 1-1-89

OIL CONSERVATION DIVISION
 P.O. Box 2088
 Santa Fe, New Mexico 87504-2088

DISTRICT I
 P.O. Box 1980, Hobbs, NM 88240

DISTRICT II
 P.O. Drawer DD, Artesia, NM 88210

DISTRICT III
 1000 Rio Brazos Rd., Aztec, NM 87410

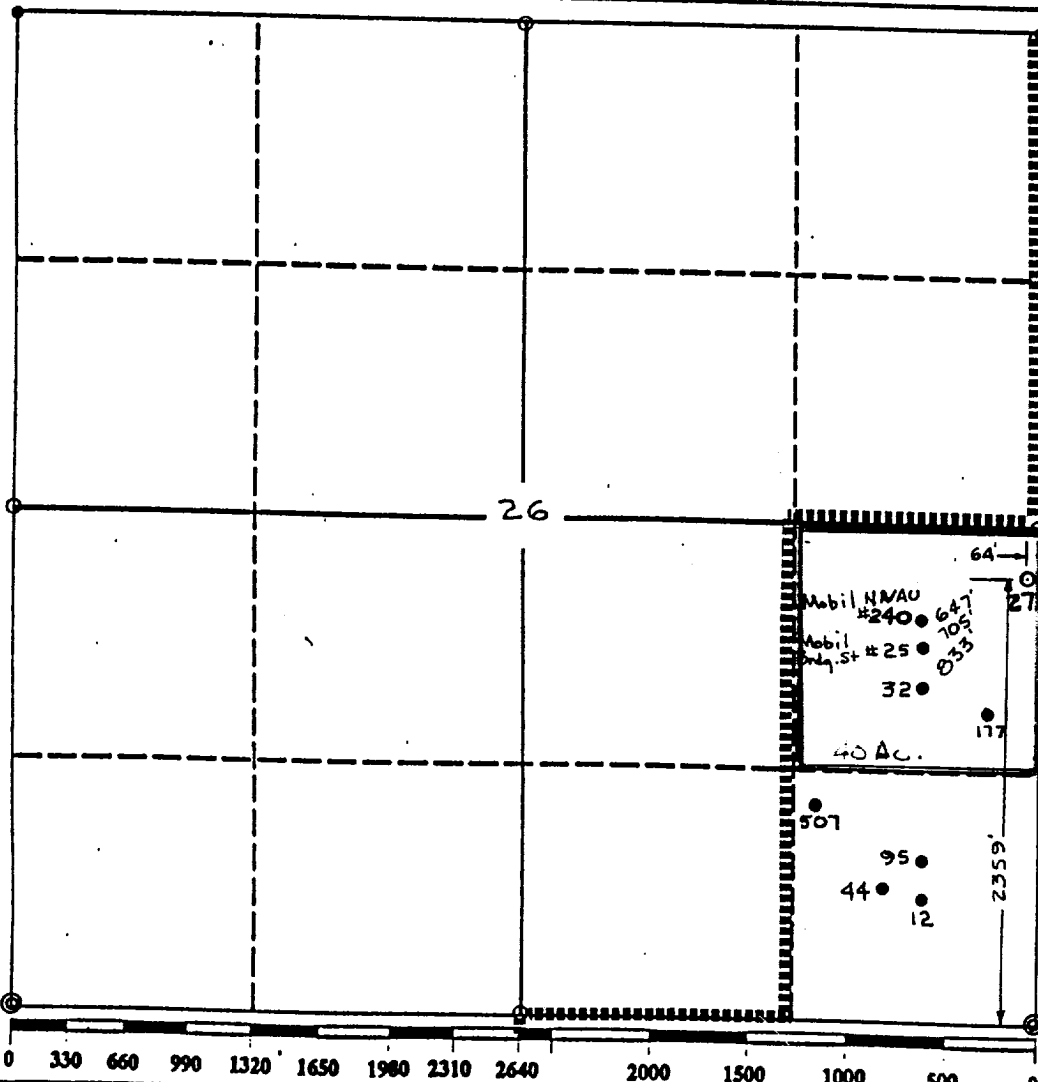
WELL LOCATION AND ACREAGE DEDICATION PLAT
 All Distances must be from the outer boundaries of the section

Operator TEXACO EXPL. AND PROD. Inc.		Lease VACUUM GLORIETA WEST UNIT		Well No. 27
Unit Letter I	Section 26	Township 17-South	Range 34-East	County Lea
Actual Footage Location of Well: 2359 feet from the South line and 64 feet from the East line				
Ground level Elev. 4012	Producing Formation Glorieta; Paddock	Pool Vacuum Glorieta Pool	Dedicated Acreage: 40 Acres	

- Outline the acreage dedicated to the subject well by colored pencil or hatchure marks on the plat below.
- If more than one lease is dedicated to the well, outline each and identify the ownership thereof (both as to working interest and royalty).
- If more than one lease of different ownership is dedicated to the well, have the interest of all owners been consolidated by communitization, unitization, force-pooling, etc.?
 Yes No If answer is "yes" type of consolidation Unitization

If answer is "no" list the owners and tract descriptions which have actually been consolidated. (Use reverse side of this form if necessary.)

No allowable will be assigned to the well until all interests have been consolidated (by communitization, unitization, force-pooling, or otherwise) or until a non-standard unit, eliminating such interest, has been approved by the Division.



OPERATOR CERTIFICATION
 I hereby certify that the information contained herein is true and complete to the best of my knowledge and belief.

Signature
Royce D. Mariott
 Printed Name
Royce D. Mariott
 Position
Division Surveyor
 Company
Texaco Expl. & Prod.
 Date
January 7, 1993

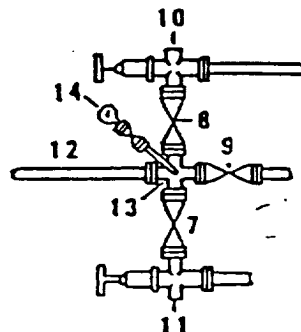
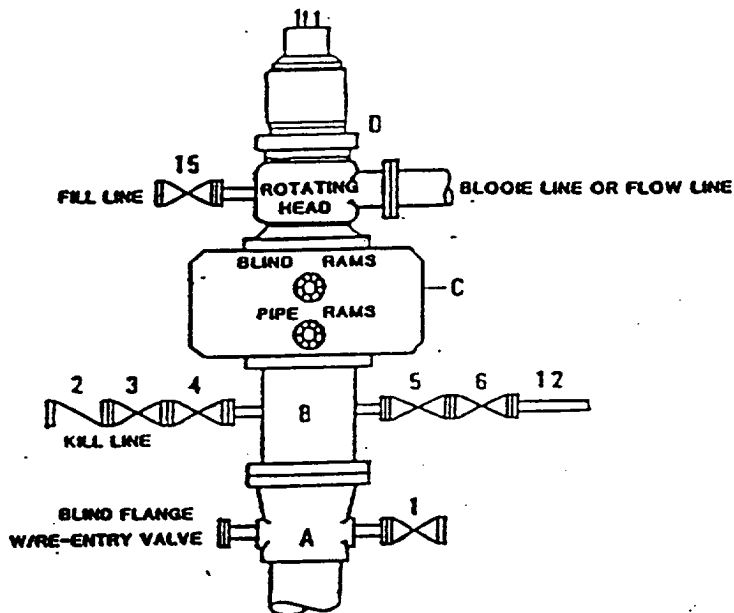
SURVEYOR CERTIFICATION
 I hereby certify that the well location shown on this plat was plotted from field notes of actual surveys made by me or under my supervision, and that the same is true and correct to the best of my knowledge and belief.

Date Surveyed
December 18, 1992
 Signature & Seal of Professional Surveyor

John S. Piper
 Certificate No.
7254 J. S. Piper

**DRILLING CONTROL
CONDITION II-B 3000 WP
FOR AIR DRILLING OR
WHERE NITROGEN OR AIR BLOWS ARE EXPECTED**

H₂S TRIM REQUIRED
YES NO



DRILLING CONTROL

MATERIAL LIST - CONDITION II - B

- A Texaco Wellhead
- B 3000# W.P. drilling spool with a 2" minimum flanged outlet for kill line and 3" minimum flanged outlet for choke line.
- C 3000# W.P. Dual ram type preventer, hydraulic operated with 1" steel, 3000# W.P. control lines (where sub-structure height is adequate, 2 - 3000# W.P. single ram type preventers may be utilized).
- D Rotating Head with fill up outlet and extended Bleed Line.
- 1,3,4, 7,8, 2" minimum 3000# W.P. flanged full opening steel gate valve, or Halliburton Lo Torc Plug valve.
- 2 2" minimum 3000# W.P. back pressure valve.
- 5,6,9 3" minimum 3000# W.P. flanged full opening steel gate valve, or Halliburton Lo Torc Plug valve.
- 12 1" minimum schedule 80, Grade "B", seamless line pipe.
- 13 2" minimum x 3" minimum 3000# W.P. flanged cross.
- 10,11 2" minimum 3000# W.P. adjustable choke bodies.
- 14 Cameron Mud Gauge or equivalent (location optional in choke line).
- 15 2" minimum 3000# W.P. flanged or threaded full opening steel gate valve, or Halliburton Lo Torc Plug valve.



TEXACO, INC.
WICKLAND DIVISION
WICKLAND, TEXAS



SCALE	DATE	EST. NO.	DRG. NO.
DRAWN BY			
CHECKED BY			

EXHIBIT C



Texaco USA
Producing Department
Midland Division

PO Box 3109
Midland TX 79702-3109

January 13, 1993

GOV - STATE AND LOCAL GOVERNMENTS

Unorthodox Locations

Vacuum Glorieta West Unit

Well Nos. 27, 50, 63, 77, 91, 105,
106, 108, 121, 122, 123, and 124

Lea County, New Mexico

State of New Mexico

Energy and Minerals Department

Oil Conservation Division

P. O. Box 2088

Santa Fe, New Mexico 87501-2088

Attention: Mr. Michael E. Stogner

Gentlemen:

Texaco Exploration and Production Inc. respectfully submits, for administrative approval, amended drilling locations for the captioned injection wells under Order No. R-9714.

Well Nos. 27, 50, 91, 105, 106, 108, 121, 122, and 123 were moved because of pipelines. Well Nos. 63 and 124 were moved because of electric lines. Well No. 77 was moved to clear Phillip's M. E. Hale Well No. 16.

Attached are Forms C-102 and a "detail" drawing showing the amended locations for each well.

Yours very truly,

C. P. Basham /cwh

C. P. Basham
Drilling Operations Manager

CWH:

cc:NMOCD, P. O. Box 1980, Hobbs, NM 88240

PIPER SURVEYING COMPANY
 P.O. Box 60432
 MIDLAND, TEXAS 79711
 (915) 550-7810

SHEET NO. 1 OF 1
 CALCULATED BY O. Flores DATE 01/04/93
 CHECKED BY D. Kelly DATE 01/04/93
 SCALE 1"=50'

