

DISTRICT I  
P.O. Box 1980, Hobbs, NM 88241-1980  
DISTRICT II  
P.O. Box Drawer DD, Artesia, NM 88211-0719  
DISTRICT III  
1000 Rio Brazos Rd., Aztec, NM 87410  
DISTRICT IV  
P.O. Box 2088, Santa Fe, NM 87504-2088

State of New Mexico  
Energy, Minerals and Natural Resources Department

Form C-10 /  
Revised February 10, 1999  
Instructions on back  
Submit to Appropriate District Office  
State Lease - 6 Copies  
Fee Lease - 5 Copies  
AMENDED REPORT

# OIL CONSERVATION DIVISION

P.O. Box 2088  
Santa Fe, New Mexico 87504-2088

## APPLICATION FOR PERMIT TO DRILL, RE-ENTER, DEEPEN, PLUGBACK, OR ADD A ZONE

<sup>1</sup> Operator Name and Address		<sup>2</sup> OGRID Number
TEXACO EXPLORATION & PRODUCTION INC.		022351
205 E. Bender, HOBBS, NM 88240		<sup>3</sup> API Number
<sup>4</sup> Property Code	<sup>5</sup> Property Name	<sup>6</sup> Well No
11122	CENTRAL VACUUM UNIT	168

<sup>7</sup> Surface Location									
Ul or lot no	Section	Township	Range	Lot. Idn	Feet From The	North/South Line	Feet From The	East/West Line	County
F	36	17-S	34-E		2068	NORTH	1467	WEST	LEA

<sup>8</sup> Proposed Bottom Hole Location If Different From Surface									
Ul or lot no	Section	Township	Range	Lot. Idn	Feet From The	North/South Line	Feet From The	East/West Line	County
	36	17S	34E		1923	NORTH	1309	WEST	LEA
<sup>9</sup> Proposed Pool 1					<sup>10</sup> Proposed Pool 2				
GRAYBURG SAN ANDRES									

<sup>11</sup> Work Type Code	<sup>12</sup> Well Type Code	<sup>13</sup> Rotary or C.T.	<sup>14</sup> Lease Type Code	<sup>15</sup> Ground Level Elevation
P	O	ROTARY	S	3985 GR
<sup>16</sup> Multiple	<sup>17</sup> Proposed Depth	<sup>18</sup> Formation	<sup>19</sup> Contractor	<sup>20</sup> Spud Date
No	4850'	GRAYBURG		9/15/00

<sup>21</sup> Proposed Casing and Cement Program					
SIZE OF HOLE	SIZE OF CASING	WEIGHT PER FOOT	SETTING DEPTH	SACKS OF CEMENT	EST. TOP
11"	8 5/8"	24#	1558'	CL-C 550 SX, CIR 97	
7 7/8"	5 1/2"	15.5#	4850'	CL-H 1050 SX, CIR 103	

<sup>22</sup> Describe the proposed program. If this application is to DEEPEN or PLUG BACK give the data on the present productive zone and proposed new productive zone. Describe the blowout prevention program, if any. Use additional sheets if necessary.

TEXACO INTENDS TO DRILL 3-1000' LATERALS IN THE SUBJECT WELL.

1ST LATERAL: KICK OFF POINT - 4610', BHL @ 1721' FNL, 330' FWL, SEC 36  
2ND LATERAL: KICK OFF POINT - 4370', BHL @ 1721' FNL, 330' FWL, SEC 36  
3RD LATERAL: KICK OFF POINT - 4240', BHL @ 1721' FNL, 330' FWL, SEC 36

Permit Expires 1 Year From Approval  
Date Unless Drilling Underway  
*Lateral*

<sup>23</sup> I hereby certify that the rules and regulations of the Oil Conservation Division have been complied with and that the information given above is true and complete to the best of my knowledge and belief.		<b>OIL CONSERVATION DIVISION</b>	
Signature	<i>J Denise Leake</i>	Approved By:	
Printed Name	J. Denise Leake	Title:	
Title	Engineering Assistant	Approval Date:	Expiration Date:
Date	8/21/00	Conditions of Approval:	
Telephone	397-0405	Attached	

NCH

DISTRICT I  
P.O. Box 1980, Hobbs, NM 88241-1980  
DISTRICT II  
P.O. Box Drawer DD, Artesia, NM 88211-0719  
DISTRICT III  
1000 Rio Brazos Rd., Aztec, NM 87410  
DISTRICT IV  
P.O. Box 2088, Santa Fe, NM 87504-2088

State of New Mexico  
Energy, Minerals and Natural Resources Department  
**OIL CONSERVATION DIVISION**  
P.O. Box 2088  
Santa Fe, New Mexico 87504-2088

Form C-10 <sup>2</sup>  
Revised February 10, 1999  
Instructions on back  
Submit to Appropriate District Office  
State Lease - 4 Copies  
Fee Lease - 3 Copies  
**AMENDED REPORT**

**WELL LOCATION AND ACREAGE DEDICATION PLAT**

<sup>1</sup> API Number 30-025-33335	<sup>2</sup> Pool Code 62180	<sup>3</sup> Pool Name VACUUM GRAYBURG SAN ANDRES
<sup>4</sup> Property Code 11122	<sup>5</sup> Property Name CENTRAL VACUUM UNIT	<sup>6</sup> Well No. 168
<sup>7</sup> OGRID Number 022351	<sup>8</sup> Operator Name TEXACO EXPLORATION & PRODUCTION INC.	<sup>9</sup> Elevation 3985' GR

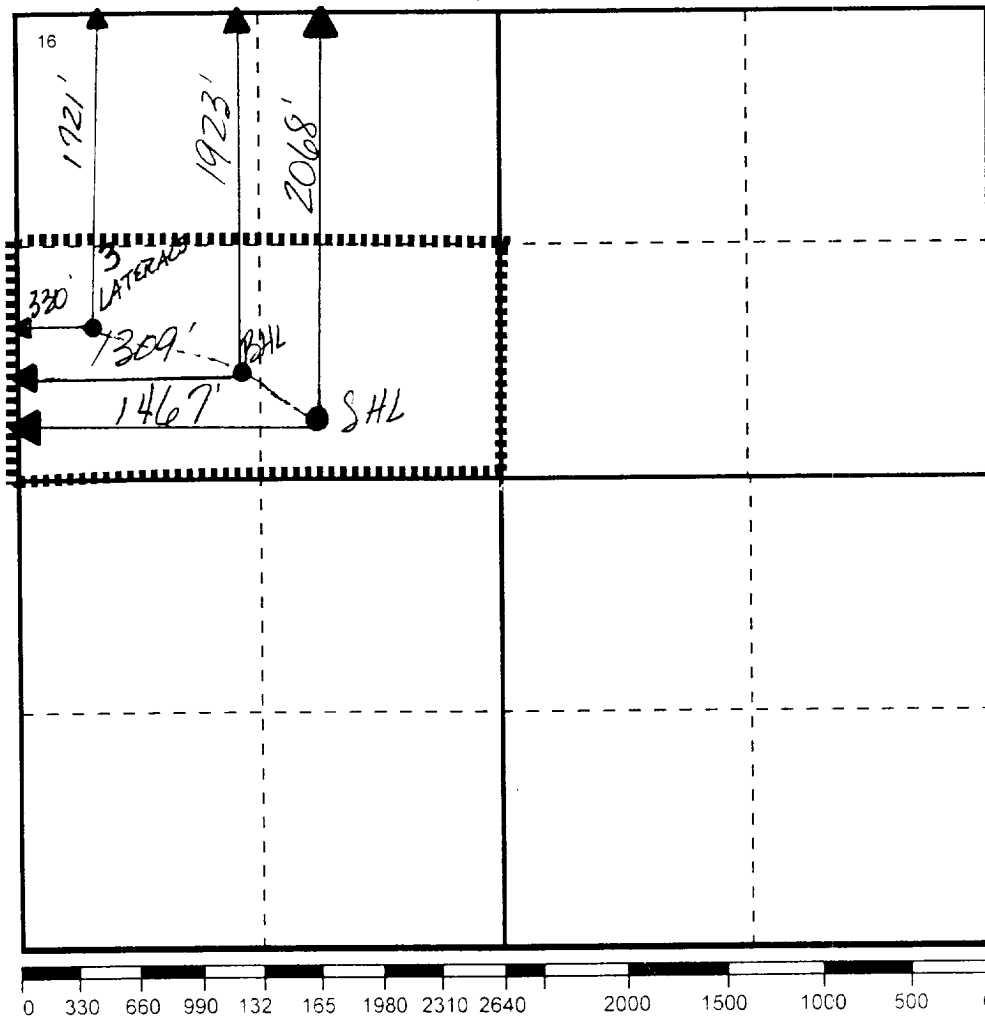
<sup>10</sup> Surface Location

Ul or lot no	Section	Township	Range	Lot.Idn	Feet From The	North/South Line	Feet From The	East/West Line	County
F	36	17-S	34-E		2068	NORTH	1467	WEST	LEA

<sup>11</sup> Bottom Hole Location If Different From Surface

Ul or lot no	Section	Township	Range	Lot.Idn	Feet From The	North/South Line	Feet From The	East/West Line	County
E/E	36	17S	34E		1923 / 1921'	NORTH / N	1309 / 330'	WEST / W	LEA
<sup>12</sup> Dedicated Acre 0	<sup>13</sup> Joint or Infill No	<sup>14</sup> Consolidation Code	<sup>15</sup> Order No.						

NO ALLOWABLE WILL BE ASSIGNED TO THIS COMPLETION UNTIL ALL INTERESTS HAVE BEEN CONSOLIDATED OR A NON-STANDARD UNIT HAS BEEN APPROVED BY THE DIVISION



**17 OPERATOR CERTIFICATION**  
I hereby certify that the information contained herein is true and complete to the best of my knowledge and belief

Signature: *J. Denise Leake*  
Printed Name: J. Denise Leake  
Position: Engineering Assistant  
Date: 8/21/00

**18 SURVEYOR CERTIFICATION**  
I hereby certify that the well location shown on this plat was plotted from field notes of actual surveys made by me or under my supervision, and that the same is true and correct to the best of my knowledge and belief.

Date Surveyed:  
Signature & Seal of Professional Surveyor:  
Certificate No: