

DISTRICT I

P.O. Box 1980, Hobbs, NM 88241-1980

DISTRICT II

P.O. Box Drawer DD, Artesia, NM 88211-0719

DISTRICT III

1000 Rio Brazos Rd., Aztec, NM 87410

DISTRICT IV

P.O. Box 2088, Santa Fe, NM 87504-2088

State of New Mexico
Energy, Minerals and Natural Resources Department

OIL CONSERVATION DIVISION

P.O. Box 2088
Santa Fe, New Mexico 87504-2088

Form C-101

Revised February 10, 1994

Instructions on back

Submit to Appropriate District Office

State Lease - 6 Copies

Fee Lease - 5 Copies

AMENDED REPORT

APPLICATION FOR PERMIT TO DRILL, RE-ENTER, DEEPEN, PLUGBACK, OR ADD A ZONE

¹ Operator Name and Address TEXACO EXPLORATION & PRODUCTION INC. P.O. Box 3109, Midland Texas 79702		² OGRID Number 022351
⁴ Property Code 11123	⁵ Property Name NORTH VACUUM ABO WEST UNIT	³ API Number 30-025-34094
		⁶ Well No. 32

⁷ Surface Location

UI or lot no.	Section	Township	Range	Lot.Idn	Feet From The	North/South Line	Feet From The	East/West Line	County
D	27	17-S	34-E		130	NORTH	130	WEST	LEA

⁸ Proposed Bottom Hole Location If Different From Surface

UI or lot no.	Section	Township	Range	Lot.Idn	Feet From The	North/South Line	Feet From The	East/West Line	County
L1 K/126	22/28	17-S	34-E		1980 / 2080	SOUTH / NORTH	2080 / 2080	WEST / EAST	LEA

⁹ Proposed Pool 1
VACUUM ABO, NORTH

¹⁰ Proposed Pool 2

¹¹ Work Type Code N	¹² WellType Code O	¹³ Rotary or C.T. ROTARY	¹⁴ Lease Type Code S	¹⁵ Ground Level Elevation 4050'
¹⁶ Multiple No	¹⁷ Proposed Depth 10770 MD	¹⁸ Formation ABO	¹⁸ Contractor NABORS	²⁰ Spud Date 9/1/97

²¹ Proposed Casing and Cement Program

SIZE OF HOLE	SIZE OF CASING	WEIGHT PER FOOT	SETTING DEPTH	SACKS OF CEMENT	EST. TOP
11	8 5/8	24#	1630'	600 SACKS	SURFACE
7 7/8	5 1/2	17#	8950'	1400 SACKS	SURFACE

²² Describe the proposed program. If this application is to DEEPEN or PLUG BACK give the data on the present productive zone and proposed new productive zone. Describe the blowout prevention program, if any. Use additional sheets if necessary.

CEMENTING PROGRAM:
 SURFACE CASING: 450 SACKS CLASS C w/ 4% GEL, 2% CC (13.5 PPG, 1.74 CF/S, 9.1 GW/S). F/B 150 SACKS CLASS C w/ 2% CC (14.8 PPG, 1.34 CF/S, 6.3 GW/S).
 PRODUCTION CASING: 1300 SACKS 35/65 POZ H w/ 6% GEL, 5% SALT, 1/4# FC (12.4 PPG, 2.14 CF/S, 11.9 GW/S). F/B 100 SACKS CLASS H (15.6 PPG, 1.18 CF/S, 5.2 GW/S).

DUAL LATERAL HORIZONTAL WELL. PENETRATION POINT SAME AS SURFACE.
 TOTAL DEPTH: L1 - 8950' TVD, 10730' MD. L2 - 8950' TVD, 10770' MD.

Permit Expires 1 Year From Approval
Date Unless Drilling Underway

²³ I hereby certify that the rules and regulations of the Oil Conservation Division have been complied with and that the information given above is true and complete to the best of my knowledge and belief.

Signature *C. Wade Howard*

Printed Name C. Wade Howard

Title Eng. Assistant

Date 7/23/97

Telephone 688-4606

OIL CONSERVATION DIVISION

ORIGINAL SIGNED BY CHRIS WILLIAMS
Approved By: DISTRICT I SUPERVISOR

Title:

Approval Date **AUG 14 1997**

Expiration Date:

Conditions of Approval:
Attached

DISTRICT I
P. O. Box 1980, Hobbs, NM 88240

DISTRICT II
P. O. Drawer DD, Artesia, NM 88210

DISTRICT III
1000 Rio Brazos Rd., Aztec, NM 87410

DISTRICT IV
P. O. Box 2088, Santa Fe, NM 87504-2088

State of New Mexico
Energy, Minerals and Natural Resources Department

Form C-102
Revised February 10, 1994

OIL CONSERVATION DIVISION
PO Box 2088
Santa Fe, NM 87504-2088

Instructions on back

Submit to Appropriate District Office

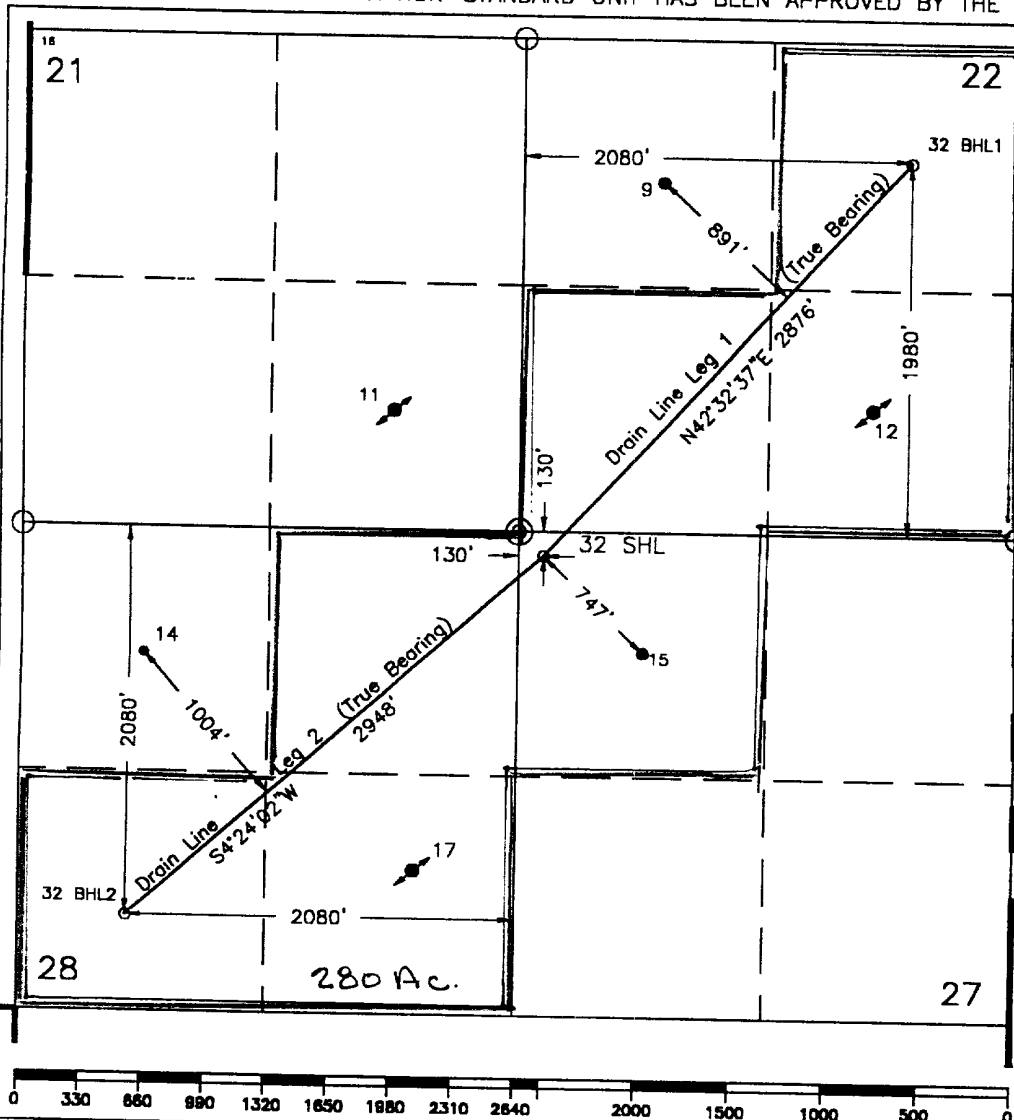
State Lease-4 copies
Fee Lease-3 copies

WELL LOCATION AND ACREAGE DEDICATION PLAT

AMENDED REPORT

¹ API Number 30-025-34094		² Pool Code 61760		³ Pool Name Vacuum Abo, North					
⁴ Property Code 11123		⁵ Property Name North Vacuum Abo West Unit			⁶ Well Number 32				
⁷ OGRID No. 22351		⁸ Operator Name TEXACO EXPLORATION & PRODUCTION, INC.			⁹ Elevation 4050'				
¹⁰ Surface Location									
UL or lot no. D	Section 27	Township 17-S	Range 34-E	Lot Idn	Feet from the 130'	North/South line North	Feet from the 130'	East/West line West	⁷ County Lea
¹¹ Bottom Hole Location If Different From Surface									
UL or lot no. L1 K/L2 G	Section 22/28	Township 17-S	Range 34-E	Lot Idn	Feet from the 1980'/2080'	North/South line South/North	Feet from the 2080'/2080'	East/West line West/East	⁷ County Lea
¹² Dedicated Acres 280		¹³ Joint or Infill		¹⁴ Consolidation Code		¹⁵ Order No.			

NO ALLOWABLE WILL BE ASSIGNED TO THIS COMPLETION UNTIL ALL INTERESTS HAVE BEEN CONSOLIDATED OR A NON-STANDARD UNIT HAS BEEN APPROVED BY THE DIVISION.



¹⁰OPERATOR CERTIFICATION

I hereby certify that the information contained herein is true and complete to the best of my knowledge and belief.

Signature
C. Wade Howard

Printed Name
C. Wade Howard

Position
Engineer's Assistant

Company
Texaco Expl. & Prod. Inc.

Date
July 2, 1997

¹⁶SURVEYOR CERTIFICATION

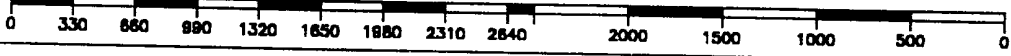
I hereby certify that the well location shown on this plat was plotted from field notes of actual surveys made by me or under my supervision, and that the same is true and correct to the best of my knowledge and belief.

Date Surveyed
June 26, 1997

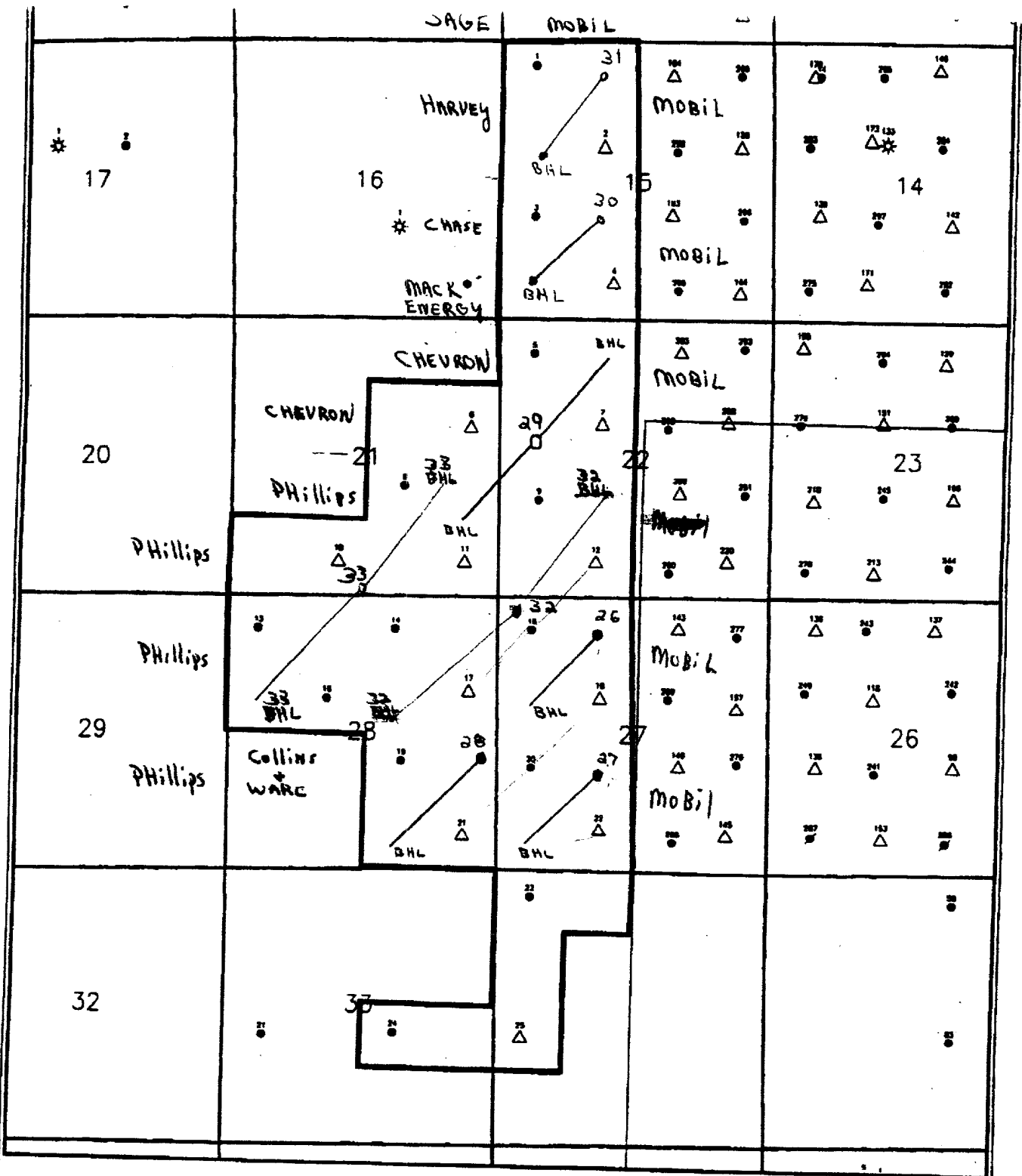
Signature & Seal of Professional Surveyor
John S. Piper

Certificate No.
7254 John S. Piper

Sheet



APPROVED BY _____



Texaco Exploration & Production, Inc.
 North Vacuum Abo West Unit
 Base Map, Wells > 8,000' TD
 Date 12/28/97

Scale 1:30000.

