

Form 3160-3
(July 1992)

UNITED STATES
DEPARTMENT OF THE INTERIOR
BUREAU OF LAND MANAGEMENT

88240
SUBMIT IN TRIPLICATE
(Other instructions on
reverse side)

FORM APPROVED
OMB NO. 1004-0136
Expires February 28, 1995

APPLICATION FOR PERMIT TO DRILL OR DEEPEN

1a. TYPE OF WORK Drill <input checked="" type="checkbox"/> Deepen <input type="checkbox"/>		5. LEASE DESIGNATION AND SERIAL NO. NM 57285
b. TYPE OF WELL Oil Well <input checked="" type="checkbox"/> Gas Well <input type="checkbox"/> Other <input type="checkbox"/> Single Zone <input type="checkbox"/> Multiple Zone <input type="checkbox"/>		6. IF INDIAN, ALLOTTEE OR TRIBE NAME N/A
2. NAME OF OPERATOR Mallon Oil Company		7. UNIT AGREEMENT NAME N/A
3. ADDRESS AND TELEPHONE NO. P.O. Box 3256 Carlsbad, NM 88220 (505) 885-4596		8. FARM OR LEASE NAME, WELL NO. Mallon 28 Federal #44
4. LOCATION OF WELL (Report location clearly and in accordance with any State requirements.) At surface 660' FSL and 330' FEL (SE/SE) Unit P		9. API WELL NO. 30-025-34442
At proposed prod. zone 660' FSL and 330' FEL (SE/SE) Unit P		10. FIELD AND POOL, OR WILDCAT Quail Ridge, Bone Springs
14. DISTANCE IN MILES AND DIRECTION FROM NEAREST TOWN OR POST OFFICE * 40 miles		11. SEC., T., R., M., OR BLK. AND SURVEY OR AREA Sec. 28, T19S R34E
15. DISTANCE FROM PROPOSED * LOCATION TO NEAREST PROPERTY OR LEASE LINE, FT. (Also to nearest drlg. unit line, if any) 1980'	16. NO. OF ACRES IN LEASE 640	12. COUNTY OR PARISH Lea County
18. DISTANCE FROM PROPOSED LOCATION* TO NEAREST WELL, DRILLING, COMPLETED, OR APPLIED FOR, ON THIS LEASE, FT.	19. PROPOSED DEPTH 10,300'	13. STATE NM
21. ELEVATIONS (SHOW WHETHER DF, RT, GR, Etc.) 3712' GR	22. APPROX. DATE WORK WILL START June 29, 1998	17. NO. OF ACRES ASSIGNED TO THIS WELL 40
23. PROPOSED CASING AND CEMENTING PROGRAM		
SIZE OF HOLE	GRADE, SIZE OF CASING	WEIGHT PER FOOT
20"	16"	42#
17-1/2"	13-3/8"	54#
12-1/4"	9-5/8"	40#
7-7/8"	5-1/2"	17#
		SETTING DEPTH
		40'
		650'
		4200'
		TD
		QUANTITY OF CEMENT
		Ready mix to surface
		780 sx lite or circ to surface
		TOC 450'
		TOC 4000'

Mallon Oil Company proposes to drill to a depth sufficient to test the Pictured Cliffs formation. If productive, 5-1/2" casing will be cemented at TD. If non-productive, the well will be plugged and abandoned in a manner consistent with Federal regulations. Specific programs as per on-shore Oil and Gas Order No. 1 are outlined in the following attachments:

Drilling Program

Exhibit 1: Blow Out Preventor Equipment/Plan
Exhibit A: Location and Elevation Plat
Exhibit B: Existing Roads/Planned Access Roads
Exhibit C: One Mile Radius Map

Exhibit D: Drilling Site Layout
Exhibit E: Production Facilities
Exhibit F: H2S Contingency Plan
Exhibit G: Environmental Assessment

OPER. OGRID NO. 13925
PROPERTY NO. 22873
WELL CODE 50461
LIFE DATE 6-29-98
API NO. 30-025-34442

IN ABOVE SPACE DESCRIBE PROPOSED PROGRAM: If proposal is to deepen, give data on present productive zone and proposed new productive zone. If to drill or deepen directionally, give pertinent data on subsurface locations and measured and true vertical depths. Give blowout preventer program, if any.

24.

SIGNED: Terry Lindeman TITLE: Operations Superintendent DATE: May 20, 1998

(This space for Federal or State office use)

PERMIT NO. _____ APPROVAL DATE _____

Application approval does not warrant or certify that the applicant holds legal or equitable title to those rights in the subject lease which would entitle the applicant to conduct operations thereon.

CONDITIONS OF APPROVAL, IF ANY:

APPROVED BY: (ORIG. SGD.) ARMANDO A. LOPEZ TITLE: Acting Assistant District Manager DATE: JUN 22 1998

*See Instructions On Reverse Side

Title 18 U.S.C. Section 1001, makes it a crime for any person knowingly and willfully to make to any department or agency of the United States any false, fictitious or fraudulent statements or representations as to any matter within its jurisdiction.

RECEIVED
1998 MAY 22 A 8 19
BUREAU OF LAND MGMT.
ROSWELL OFFICE

DRILLING PROGRAM

Attached to Form 3160-3
Mallon Oil Company
Mallon 28 Federal No. 44
660' FSL, 330' FEL, (SE/SE, Unit P)
Sec. 28, T19S R34E
Lea County, New Mexico

Lease Number: NM-57285

1. Geologic name of surface formation is : Quaternary Alluvium

2. Estimated tops of important geologic markers:

Quaternary Alluvium	Surface
Rustler	1590'
Top of Salt	1720'
Base of Salt	3326'
Yates	3513'
Seven Rivers	3821'
Queen	4516'
Delaware	5800'
Bone Springs	10,000'
Total Depth	10,300'

3. The estimated depths of anticipated fresh water, oil or gas:

Quaternary Alluvium	300'	Fresh water
Yates	3513'	Oil
Queen	4516'	Oil
Delaware	5800'	Oil
Bone Springs	10,000'	Oil

No other formations are expected to give up oil, gas or fresh water in measurable quantities. The surface fresh water sands will be protected by setting 9 5/8" casing at 1500' and circulating cement back to surface. Potash will be protected by setting 5 1/2" casing at total depth and circulating cement back to 1300' from surface.

4. Proposed casing program:

<u>Hole Size</u>	<u>Interval</u>	<u>Casing OD</u>	<u>Casing weight, grade, and thread</u>
20"	0'-40'	16"	Conductor, 0.25" wall thickness
17-1/2"	0'-650'	13-3/8"	54 lbs/ft K55, LT&C
12-1/4"	0'-4200'	9-5/8"	40 lbs/ft K55, LT&C
7-7/8"	0'-TD	5-1/2"	17.0 lbs/ft N-80, LT&C

Cement Program:

20" Conductor Casing	Cemented with ready-mix to surface
13-3/8" Surface Casing	Cemented to surface with 780 sks Pacesetter Lite 6.00% Gel (Bentonite) containing 0.25 lb/sk Cello Seal
9-5/8" Intermediate	Cement with 700 sks Pacesetter Lite, 6.0% Gel, 5% salt, .25 lbs/sk Cello Seal
5-1/2" Production Casing	<u>Stage #1</u> - Cement with 800 sacks Class C + 5 lb/sk CSE + 0.5% CF-14 + 5 lb/sk salt + 5 lb/sk Gilsonite + 0.25 lbs/sk Cello Seal. This cement slurry is designed to bring TOC to 400' <u>Stage #2</u> - Cement with 580 sacks Pacesetter Lite, 6.0% Gel (Bentonite) + 5.0% salt + 0.25 lb/sk Cello Seal, followed with 100 sacks Class C cement + 5.0 lb/sk CSE + 5 lb/sk salt + 0.25 lb/sk + Cello Seal + 5.0 lb/sk Gilsonite + 0.5 % CF-14. This cement slurry is designed to bring TOC to 4000'

5. Minimum specifications for pressure control:

The blowout preventor equipment (BOP) shown in Exhibit 1 will consist of a double ram-type (3000 psi WP) preventor. The unit will be hydraulically operated and the ram-type preventor will be equipped with blind rams on top and drill pipe rams on bottom. The BOP will be nipped up on the 9-5/8" surface casing and used continuously until TD is reached. BOP and accessory equipment will be tested to 1000 psi before drilling out of surface casing. Pipe rams will be operationally checked on each trip out of the hole. These checks will be noted on the daily tour sheets. A 2" kill line and 2" choke line will be included in the drilling spool located below the ram-type BOP. Other accessories to the BOP equipment will include a kelly cock and floor safety valve, and choke lines and choke manifold with 3000 psi WP rating.

6. Types and characteristics of the proposed mud system:

The well will be drilled to TD with a combination of brine, cut brine, and polymer/KCL mud system. The applicable depths and properties of this system are as follows:

<u>Depth</u>	<u>Type</u>	<u>Weight</u> (ppg)	<u>Viscosity</u> (sec)	<u>Water loss</u> (cc)
0'-40'	Fresh Water (spud)	8.5	40-45	N.C.
0'-1500'	F.W. (Gel/Lime)	8.5-9.0	32-36	N.C.
1500'-TD	Brine Water	10.0	32-34	10-12 cc

Sufficient mud materials required to maintain mud properties and meet minimum lost circulation and weight increase requirements, will be kept at the well site at all times.

7. Auxiliary well control and monitoring equipment:

- (A) A kelly cock will be kept in the drill string at all times.
- (B) A full opening drill pipe stabbing valve (inside BOP) with proper drill pipe connections will be on the rig floor at all times.
- (C) The drilling fluids systems will be visually monitored at all times.

8. Testing, logging and coring program:

Drill Stem Tests:	None anticipated
Logging:	TD to surface casing, GR., CNL-FDC, DLL, MSFL
Coring:	None planned

9. Abnormal conditions, pressures, temperatures, and potential hazards:

No abnormal pressures or temperatures are anticipated. The proposed mud program will be modified to control excess pressure if abnormal pressures are encountered. The estimated bottom hole temperature (BHT) at TD is 150° F and estimated maximum bottom hole pressure (BHP) is 3200 psig. No hydrogen sulfide or other hazardous gases or fluids have been encountered, reported, or are known to exist at this depth in this area. No major loss circulation zones have been reported in offsetting wells.

10. Anticipated starting date: June 29, 1998

Anticipated completion of drilling operations: Expected duration of 3 weeks.

Multi-Point Surface Use and Operation Plan

Attached to Form 3160-3

Mallon Oil Company

Mallon 28 Federal No. 44

660' FSL, 330' FEL, (SE/SE, Unit P)

Sec. 28, T19S R34E

Lea County, New Mexico

Lease Number: NM-57285

1. Existing roads:

- A. The well site and elevation plat for the proposed well is shown in Exhibit A. It was staked by John West Engineering, Hobbs, NM.
- B. All roads to the location are shown in Exhibit B. The existing roads are illustrated in pink and are adequate for travel during drilling and production operations. Upgrading of the road prior to drilling will be done where necessary as determined during the on site inspection.
- C. Directions to location: Go west 36 miles from Hobbs, New Mexico, on Hwy. 62/180. Turn north on lease road and travel 0.75 miles, turn east and travel 0.5 miles to location.
- D. Routine grading and maintenance of existing roads will be conducted as necessary to maintain their condition as long as any operations continue on this lease.

2. Proposed access road:

Exhibit C shows the new access road to be constructed and is illustrated in yellow. The road will be constructed as follows:

- A. The maximum width of the running surface will be 15'. The road will be crowned and ditched and constructed of 6" of rolled and compacted caliche. Ditches will be at 3:1 slope and 4 feet wide. Water will be diverted where necessary to avoid ponding, prevent erosion, maintain good drainage, and to be consistent with local drainage patterns.

- B. The average grade will be less than 1%.
- C. No turnouts are planned.
- D. No culverts, cattle guard, gates, low-water crossings, or fence cuts are necessary.
- E. Surfacing material will consist of native caliche. Caliche will be obtained from the nearest BLM-approved caliche pit. Any additional materials that are required will be purchased from the dirt contractor.
- F. The proposed access road as shown in Exhibit C has been center line flagged by John West Engineering, Hobbs, New Mexico.

3. Location of existing wells:

- A. Existing wells within a one mile radius are shown in Exhibit D.

4. Location of existing and/or proposed facilities:

- A. If the well proves to be commercial, the necessary production facilities and tank battery will be installed on the drilling pad.

5. Location and type of water supply:

- A. It is planned to drill the proposed well with the fresh water that will be obtained from private or commercial sources and will be transported over the existing access roads. No water well will be drilled on the location.

6. Source of construction materials:

- A. Caliche for surfacing the proposed access road and well site pad will be obtained from a BLM-approved caliche pit.

7. Methods of handling waste disposal:

- A. Drill cuttings not retained for evaluation purposes will be disposed into the reserve pit.
- B. Drilling fluids will be contained in steel metal tanks. The reserve pit will contain any excess drilling fluid or flow from the well during drilling, cementing, and completion operations. The reserve pit will be an earthen pit, approximately 200' x 150' x 6' deep and fenced on three sides prior to drilling. It will be fenced on the fourth side immediately following rig removal. The reserve pit will be plastic-lined (5-7 mil thickness) to minimize loss of drilling fluids and saturation of the ground with brine water.
- C. Water produced from the well during completion may be disposed into the reserve pit or a steel tank, depending on the rates. After the well is permanently placed on production, produced water will be collected in fiberglass or steel tanks until hauled by transport to an approved disposal system; produced oil will be collected in steel tanks until sold.
- D. A portable chemical toilet will be provided on the location for human waste during the drilling and completion operations.
- E. Garbage and trash produced during drilling or completion operations will be contained in portable trash basket and hauled to approved disposal facilities. All water and fluids will be disposed of into the reserve pit. Salts and other chemicals produced during drilling or testing will be disposed of into the reserve pit. No toxic waste or hazardous chemicals will be produced by this operation.

- F. After the rig is moved out and the well is either completed or abandoned, all waste materials will be cleaned up within 30 days. No adverse materials will be left on the location. The reserve pit will be completely fenced and flagged and kept closed until it has dried. When the reserve pit is dry enough to break out and fill, and, as weather permits, the unused portion of the well site will be leveled and reseeded as per BLM specifications. Only that part of the pad required for production facilities will be kept in use. In the event of a dry hole, only a dry-hole marker will remain.

8. Ancillary facilities:

- A. None required.

9. Well site layout:

- A. Exhibit E shows the relative location and dimensions of the well pad, reserve pits, and the location of major rig components. Top soil, if available, will be stockpiled per BLM specifications as determined at the on site inspection. Because the pad is almost level, no major cuts will be required.
- B. Exhibit E shows the planned orientation for the rig and associated drilling equipment, reserve pit, pipe racks, turn-around and parking areas, and access road. No permanent living facilities are planned, but a temporary foreman trailer will be on location during the drilling operations.
- C. The reserve pit will be lined with a high-quality plastic sheeting (5-7 mil thickness).

1990
1991
1992
1993
1994
1995
1996
1997
1998
1999
2000
2001
2002
2003
2004
2005
2006
2007
2008
2009
2010
2011
2012
2013
2014
2015
2016
2017
2018
2019
2020
2021
2022
2023
2024
2025
2026
2027
2028
2029
2030
2031
2032
2033
2034
2035
2036
2037
2038
2039
2040
2041
2042
2043
2044
2045
2046
2047
2048
2049
2050
2051
2052
2053
2054
2055
2056
2057
2058
2059
2060
2061
2062
2063
2064
2065
2066
2067
2068
2069
2070
2071
2072
2073
2074
2075
2076
2077
2078
2079
2080
2081
2082
2083
2084
2085
2086
2087
2088
2089
2090
2091
2092
2093
2094
2095
2096
2097
2098
2099
2100
2101
2102
2103
2104
2105
2106
2107
2108
2109
2110
2111
2112
2113
2114
2115
2116
2117
2118
2119
2120
2121
2122
2123
2124
2125
2126
2127
2128
2129
2130
2131
2132
2133
2134
2135
2136
2137
2138
2139
2140
2141
2142
2143
2144
2145
2146
2147
2148
2149
2150
2151
2152
2153
2154
2155
2156
2157
2158
2159
2160
2161
2162
2163
2164
2165
2166
2167
2168
2169
2170
2171
2172
2173
2174
2175
2176
2177
2178
2179
2180
2181
2182
2183
2184
2185
2186
2187
2188
2189
2190
2191
2192
2193
2194
2195
2196
2197
2198
2199
2200
2201
2202
2203
2204
2205
2206
2207
2208
2209
2210
2211
2212
2213
2214
2215
2216
2217
2218
2219
2220
2221
2222
2223
2224
2225
2226
2227
2228
2229
2230
2231
2232
2233
2234
2235
2236
2237
2238
2239
2240
2241
2242
2243
2244
2245
2246
2247
2248
2249
2250
2251
2252
2253
2254
2255
2256
2257
2258
2259
2260
2261
2262
2263
2264
2265
2266
2267
2268
2269
2270
2271
2272
2273
2274
2275
2276
2277
2278
2279
2280
2281
2282
2283
2284
2285
2286
2287
2288
2289
2290
2291
2292
2293
2294
2295
2296
2297
2298
2299
2300
2301
2302
2303
2304
2305
2306
2307
2308
2309
2310
2311
2312
2313
2314
2315
2316
2317
2318
2319
2320
2321
2322
2323
2324
2325
2326
2327
2328
2329
2330
2331
2332
2333
2334
2335
2336
2337
2338
2339
2340
2341
2342
2343
2344
2345
2346
2347
2348
2349
2350
2351
2352
2353
2354
2355
2356
2357
2358
2359
2360
2361
2362
2363
2364
2365
2366
2367
2368
2369
2370
2371
2372
2373
2374
2375
2376
2377
2378
2379
2380
2381
2382
2383
2384
2385
2386
2387
2388
2389
2390
2391
2392
2393
2394
2395
2396
2397
2398
2399
2400
2401
2402
2403
2404
2405
2406
2407
2408
2409
2410
2411
2412
2413
2414
2415
2416
2417
2418
2419
2420
2421
2422
2423
2424
2425
2426
2427
2428
2429
2430
2431
2432
2433
2434
2435
2436
2437
2438
2439
2440
2441
2442
2443
2444
2445
2446
2447
2448
2449
2450
2451
2452
2453
2454
2455
2456
2457
2458
2459
2460
2461
2462
2463
2464
2465
2466
2467
2468
2469
2470
2471
2472
2473
2474
2475
2476
2477
2478
2479
2480
2481
2482
2483
2484
2485
2486
2487
2488
2489
2490
2491
2492
2493
2494
2495
2496
2497
2498
2499
2500
2501
2502
2503
2504
2505
2506
2507
2508
2509
2510
2511
2512
2513
2514
2515
2516
2517
2518
2519
2520
2521
2522
2523
2524
2525
2526
2527
2528
2529
2530
2531
2532
2533
2534
2535
2536
2537
2538
2539
2540
2541
2542
2543
2544
2545
2546
2547
2548
2549
2550
2551
2552
2553
2554
2555
2556
2557
2558
2559
2560
2561
2562
2563
2564
2565
2566
2567
2568
2569
2570
2571
2572
2573
2574
2575
2576
2577
2578
2579
2580
2581
2582
2583
2584
2585
2586
2587
2588
2589
2590
2591
2592
2593
2594
2595
2596
2597
2598
2599
2600
2601
2602
2603
2604
2605
2606
2607
2608
2609
2610
2611
2612
2613
2614
2615
2616
2617
2618
2619
2620
2621
2622
2623
2624
2625
2626
2627
2628
2629
2630
2631
2632
2633
2634
2635
2636
2637
2638
2639
2640
2641
2642
2643
2644
2645
2646
2647
2648
2649
2650
2651
2652
2653
2654
2655
2656
2657
2658
2659
2660
2661
2662
2663
2664
2665
2666
2667
2668
2669
2670
2671
26

10. Plans for restoration of the surface:

- A. Upon completion of the proposed operations, if the well is to be abandoned, the caliche will be removed from the location and road and returned to the pit from which it was taken. The pit area, after allowing to dry, will be broken out and leveled. The original top soil will be returned to the entire location, which will be leveled and contoured to as nearly the original topography as possible.

All trash and garbage will be hauled away in order to leave the location in an aesthetically pleasing condition.

- B. The disturbed area will be revegetated as recommended by the BLM.
- C. Three sides of the reserve pit will be fenced prior to and during drilling operations. At the time that the rig is removed, the reserve pit will be fenced on the rig (fourth) side and flagged to prevent livestock or wildlife from becoming entrapped. The fencing and flagging will remain in place until the pit area is cleaned up and leveled. No oil will be left on the surface of the fluid in the pit. The entire reserve pit will be flagged until the fluid has completely evaporated.
- D. Upon completion of the proposed operations, if the well is completed, the reserve pit will be treated as outlined above within the same prescribed time. The caliche from any area of the original drill site not needed for production operations or facilities will be removed and used for construction of thicker pads or firewalls for the tank battery installation. Any additional caliche required for facilities will be obtained from a BLM-approved caliche pit. Top soil removed from the drill site will be used to recontour the pit area and any unused portions of the drill pad to the original natural level and reseeded as per BLM specifications.

11. Surface ownership:

The well site and lease is located entirely on Federal surface.

Received
JUN 1908
Hobbs
and
Co.

12. Other information:

- A. The top soil is sandy. The vegetation is native yucca and prickly pear.
- B. There is no permanent or live water in the immediate area.
- C. Residences and other structures: No residences in the immediate area. Oil production facilities on offsetting location.
- D. Land use: Cattle grazing
- E. Surface ownership: The proposed well site and access road is on Federal surface and minerals.
- F. There is no evidence of any archaeological, historical or cultural sites in the area. An archaeological survey has been conducted by Desert West Archaeological Services, Carlsbad, New Mexico. The reports have been submitted to the appropriate government agencies.

13. Operations representative:

- A. The field representative responsible for ensuring compliance with the approved surface use and operations plan is:

Terry Lindeman
Mallon Oil Company
P.O. Box 3256
Carlsbad, NM 88220
Office Phone: 505-885-4596
Home Phone: 505-745-1136

Certification

I hereby certify that I, or persons under my direct supervision, have inspected the proposed drill site and access route; that I am familiar with the conditions which currently exist; that the statements made in this plan are to the best of my knowledge, true and correct; and the work associated with the operations proposed herein will be performed by Mallon Oil Company and its contractors and subcontractors in conformity with this plan and the terms and conditions with which it is approved. This statement is subject to the provisions of 18 U.S.C. 1001 for the filing of a false statement.

Date: May 20, 1998

Signed: 
Terry Lindeman
Operations Superintendent

Attachment to Exhibit #1
NOTES REGARDING THE BLOWOUT PREVENTERS

1. Drilling nipple to be so constructed that it can be removed without use of a welder through rotary table opening, with minimum ID equal to preventer bore.
2. Wear ring to be properly installed in head.
3. Blow out preventer and all fittings must be in good condition, 3000 psi WP minimum.
4. All fittings to be flanged.
5. Safety valve must be available on rig floor at all times with proper connections, valve to be full bore 3000 psi WP minimum.
6. All choke and fill lines to be securely anchored, especially ends of choke stem.
7. Equipment through which bit must pass shall be at least as large as the diameter of the casing being drilled through.
8. Kelly cock on kelly.
9. Extension wrenches and hand wheels to be properly installed.
10. Blow out preventer control to be located as close to driller's position as feasible.
11. Blow out preventer closing equipment to include minimum 40 gallon accumulator, two independent sources of pump power on each closing unit installation, and meet all API specifications.

MINIMUM BLOWOUT PREVENTER REQUIREMENTS

3,000 psi Working Pressure

3 MWP

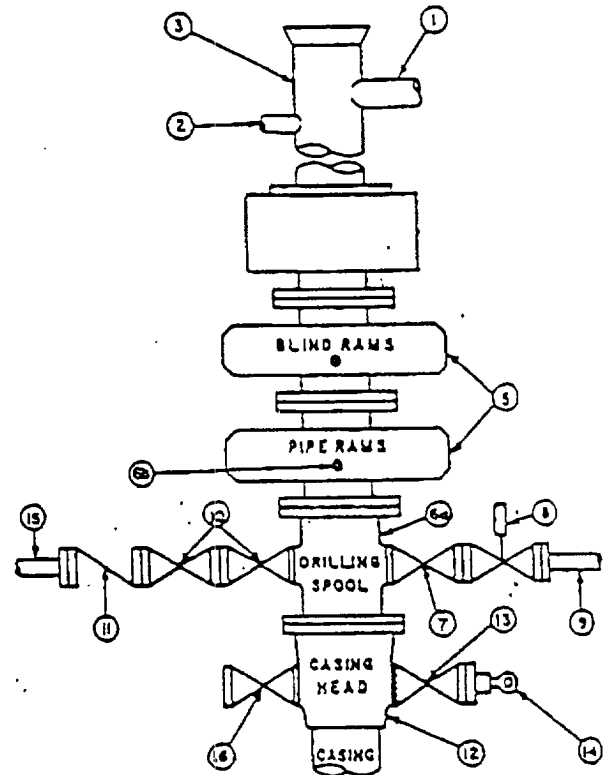
STACK REQUIREMENTS

No.	Item	Min. I.D.	Min. Nominal
1	Flowline		
2	Fill up line		2"
3	Drilling nipple		
5	Two single or one dual hydraulically operated rams		
6a	Drilling spool with 2" min. kill line and 3" min choke line outlets		
6b	2" min. kill line and 3" min. choke line outlets in ram. (Alternate to 6a above.)		
7	Valve Gate <input type="checkbox"/> Plug <input type="checkbox"/>	3-1/8"	
8	Gate valve—power operated	3-1/8"	
9	Line to choke manifold		3"
10	Valves Gate <input type="checkbox"/> Plug <input type="checkbox"/>	2-1/16"	
11	Check valve	2-1/16"	
12	Casing head		
13	Valve Gate <input type="checkbox"/> Plug <input type="checkbox"/>	1-13/16"	
14	Pressure gauge with needle valve		
15	Kill line to rig mud pump manifold		2"

OPTIONAL

16	Flanged valve	1-13/16"
----	---------------	----------

CONFIGURATION A



CONTRACTOR'S OPTION TO FURNISH:

1. All equipment and connections above bradenhead or casinghead. Working pressure of preventers to be 3,000 psi, minimum.
2. Automatic accumulator (80 gallon, minimum) capable of closing BOP in 30 seconds or less and, holding them closed against full rated working pressure.
3. BOP controls, to be located near drillers position.
4. Kelly equipped with Kelly cock.
5. Inside blowout preventer or its equivalent on derrick floor at all times with proper threads to fit pipe being used.
6. Kelly saver-sub equipped with rubber casing protector at all times.
7. Plug type blowout preventer tester.
8. Extra set pipe rams to fit drill pipe in use on location at all times.
9. Type RX ring gaskets in place of Type R.

MEC TO FURNISH:

1. Bradenhead or casinghead and side valves.

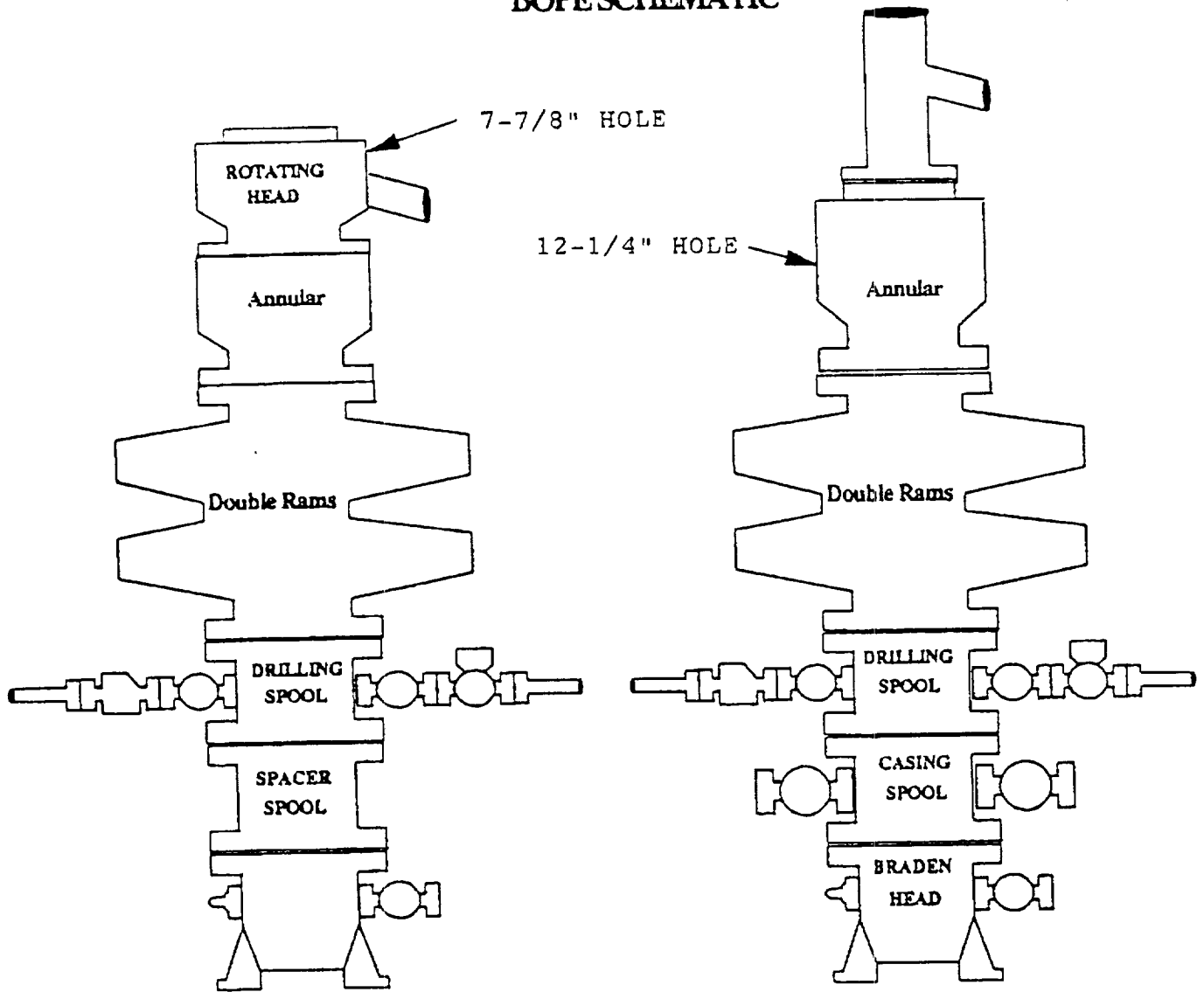
GENERAL NOTES:

1. Deviations from this drawing may be made only with the express permission of MEC's Drilling Manager.
2. All connections, valves, fittings, piping, etc., subject to well or pump pressure must be flanged (suitable clamp connections acceptable) and have minimum working pressure equal to rated working pressure of preventers up through chokes. Valves must be full opening and suitable for high pressure mud service.
3. Controls to be of standard design and each marked, showing opening and closing position.
4. Chokes will be positioned so as not to hamper or delay changing of choke beans. Replaceable parts for adjustable chokes, other bean sizes, retainers, and choke wrenches to be conveniently located for immediate use.
5. All valves to be equipped with handwheels or handles ready for immediate use.

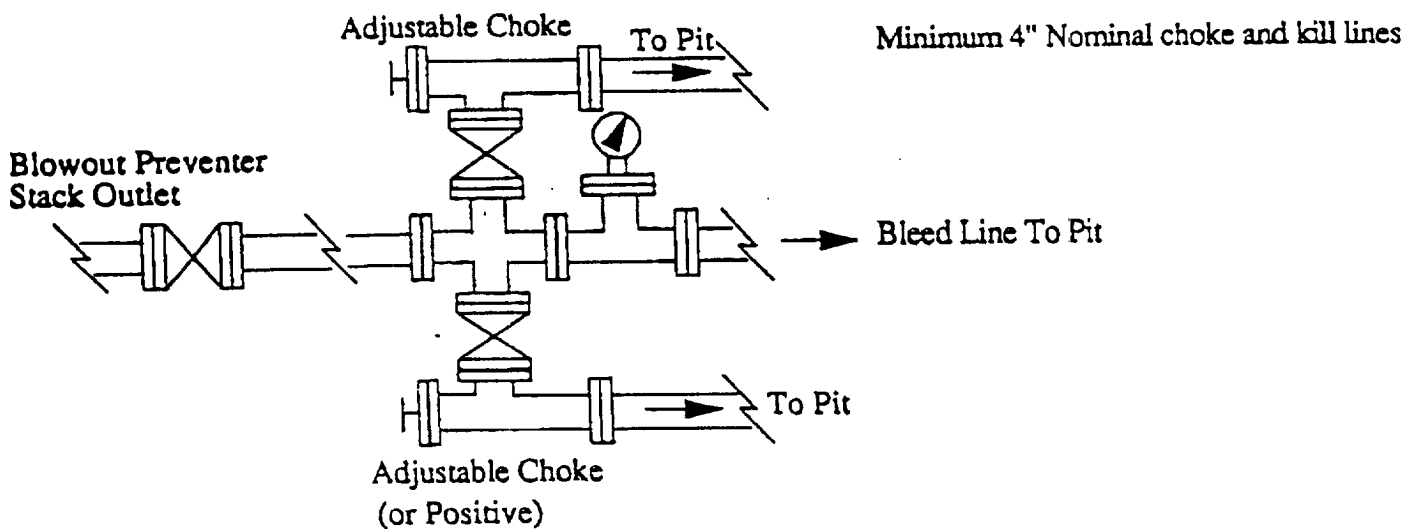
7. Handwheels and extensions to be connected and ready for use.
8. Valves adjacent to drilling spool to be kept open. Use outside valves except for emergency.
9. All seamless steel control piping (3000 psi working pressure) to have flexible joints to avoid stress. Hoses will be permitted.
10. Casinghead connections shall not be used except in case of emergency.
11. Do not use kill line for routine fill-up operations.

Exhibit 1

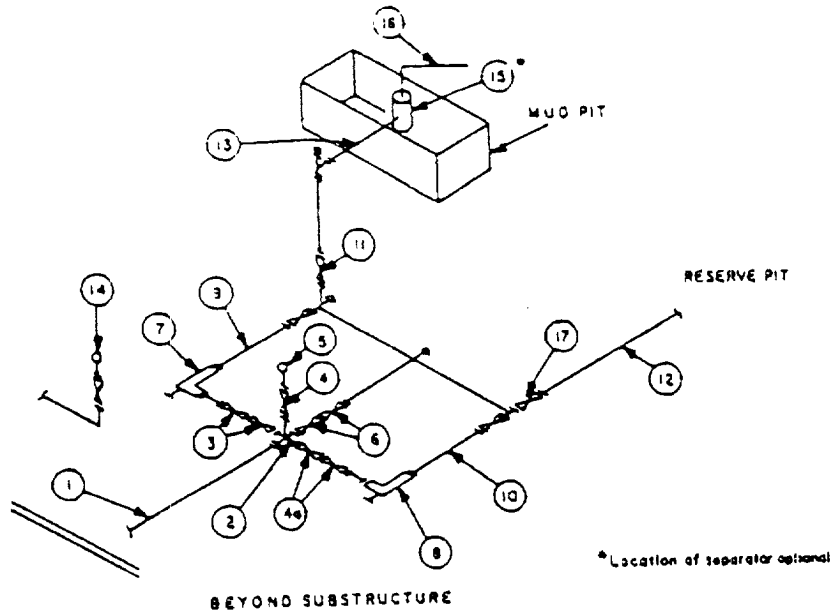
BOPE SCHEMATIC



Choke Manifold Requirement (3000 psi WP)



MINIMUM CHOKE MANIFOLD
3,000, 5,000 and 10,000 PSI Working Pressure
3 MWP - 5 MWP - 10 MWP



MINIMUM REQUIREMENTS										
No		3,000 MWP			5,000 MWP			10,000 MWP		
		I D.	NOMINAL	RATING	I D.	NOMINAL	RATING	I D.	NOMINAL	RATING
1	Line from drilling spool		3"	3,000		3"	5,000		3"	10,000
2	Cross 3"x3"x3"x2"			3,000			5,000			10,000
	Cross 3"x3"x3"x3"									
3	Valves (1) Gate <input type="checkbox"/> Plug <input type="checkbox"/> (2)	3-1/8"		3,000	3-1/8"		5,000	3-1/8"		10,000
4	Valve Gate <input type="checkbox"/> Plug <input type="checkbox"/> (2)	1-13/16"		3,000	1-13/16"		5,000	1-13/16"		10,000
4a	Valves (1)	2-1/16"		3,000	2-1/16"		5,000	3-1/8"		10,000
5	Pressure Gauge			3,000			5,000			10,000
6	Valves Gate <input type="checkbox"/> Plug <input type="checkbox"/> (2)	3-1/8"		3,000	3-1/8"		5,000	3-1/8"		10,000
7	Adjustable Choke (3)	2"		3,000	2"		5,000	2"		10,000
8	Adjustable Choke	1"		3,000	1"		5,000	2"		10,000
9	Line		3"	3,000		3"	5,000		3"	10,000
10	Line		2"	3,000		2"	5,000		3"	10,000
11	Valves Gate <input type="checkbox"/> Plug <input type="checkbox"/> (2)	3-1/8"		3,000	3-1/8"		5,000	3-1/8"		10,000
12	Lines		3"	1,000		3"	1,000		3"	2,000
13	Lines		3"	1,000		3"	1,000		3"	2,000
14	Remote reading compound standpipe pressure gauge			3,000			5,000			10,000
15	Gas Separator		2'x5'			2'x5'			2'x5'	
16	Line		4"	1,000		4"	1,000		4"	2,000
17	Valves Gate <input type="checkbox"/> Plug <input type="checkbox"/> (2)	3-1/8"		3,000	3-1/8"		5,000	3-1/8"		10,000

- (1) Only one required in Class 3M.
(2) Gate valves only shall be used for Class 10M.
(3) Remote operated hydraulic choke required on 5,000 psi and 10,000 psi for drilling.

EQUIPMENT SPECIFICATIONS AND INSTALLATION INSTRUCTIONS

- All connections in choke manifold shall be welded, studded, flanged or Cameron clamp of comparable rating.
- All flanges shall be API 6B or 6BX and ring gaskets shall be API RX or BX. Use only BX for 10 MWP.
- All lines shall be securely anchored.
- Chokes shall be equipped with tungsten carbide seats and needles, and replacements shall be available.
- Choke manifold pressure and standpipe pressure gauges shall be available at the choke manifold to assist in regulating chokes. As an alternate with automatic chokes, a choke manifold pressure gauge shall be located on the rig floor in conjunction with the standpipe pressure gauge.
- Line from drilling spool to choke manifold should be as straight as possible. Lines downstream from chokes shall make

DISTRICT I

P.O. Box 1980, Hobbs, NM 88241-1980

State of New Mexico

Energy, Minerals and Natural Resources Department

Form C-102

Revised February 10, 1994

Submit to Appropriate District Office

State Lease - 4 Copies

Fee Lease - 3 Copies

DISTRICT II

P.O. Drawer DD, Artesia, NM 88211-0719

DISTRICT III

1000 Rio Brazos Rd., Aztec, NM 87410

DISTRICT IV

P.O. BOX 2088, SANTA FE, N.M. 87504-2088

OIL CONSERVATION DIVISION

P.O. Box 2088

Santa Fe, New Mexico 87504-2088

☐ AMENDED REPORT

WELL LOCATION AND ACREAGE DEDICATION PLAT

API Number 30-025-34442	Pool Code 50461	Pool Name Quail Ridge; Bone Spring, South
Property Code 22873	Property Name MALLON 28 FEDERAL	Well Number 44
OGRID No. 13925	Operator Name MALLON OIL COMPANY	Elevation 3712

Surface Location

UL or lot No.	Section	Township	Range	Lot Idn	Feet from the	North/South line	Feet from the	East/West line	County
P	28	19 S	34 E		660	SOUTH	330	EAST	LEA

Bottom Hole Location If Different From Surface

UL or lot No.	Section	Township	Range	Lot Idn	Feet from the	North/South line	Feet from the	East/West line	County
Dedicated Acres	Joint or Infill	Consolidation Code	Order No.						

NO ALLOWABLE WILL BE ASSIGNED TO THIS COMPLETION UNTIL ALL INTERESTS HAVE BEEN CONSOLIDATED
OR A NON-STANDARD UNIT HAS BEEN APPROVED BY THE DIVISION

<p>Exhibit A</p>			

3710.6' — 3718.0'

3708.5' — 3717.7'

DETAIL


SEE DETAIL

330'

660'

OPERATOR CERTIFICATION

I hereby certify the the information contained herein is true and complete to the best of my knowledge and belief.



Signature

Terry Lindeman

Printed Name

Operations Superintendent

Title

May 20, 1998

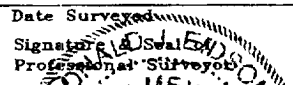
Date

SURVEYOR CERTIFICATION

I hereby certify that the well location shown on this plat was plotted from field notes of actual surveys made by me or under my supervision, and that the same is true and correct to the best of my belief.

MAY 12, 1998

Date Surveyed

Signature 

Professional Surveyor

DMCC

NEW MEXICO

3239

5-13-98

38-17-0642

Certificate No. **RONALD C. EDSON** 3239

GARY NUSSEN 12641

WILLIAM McDONALD 12185

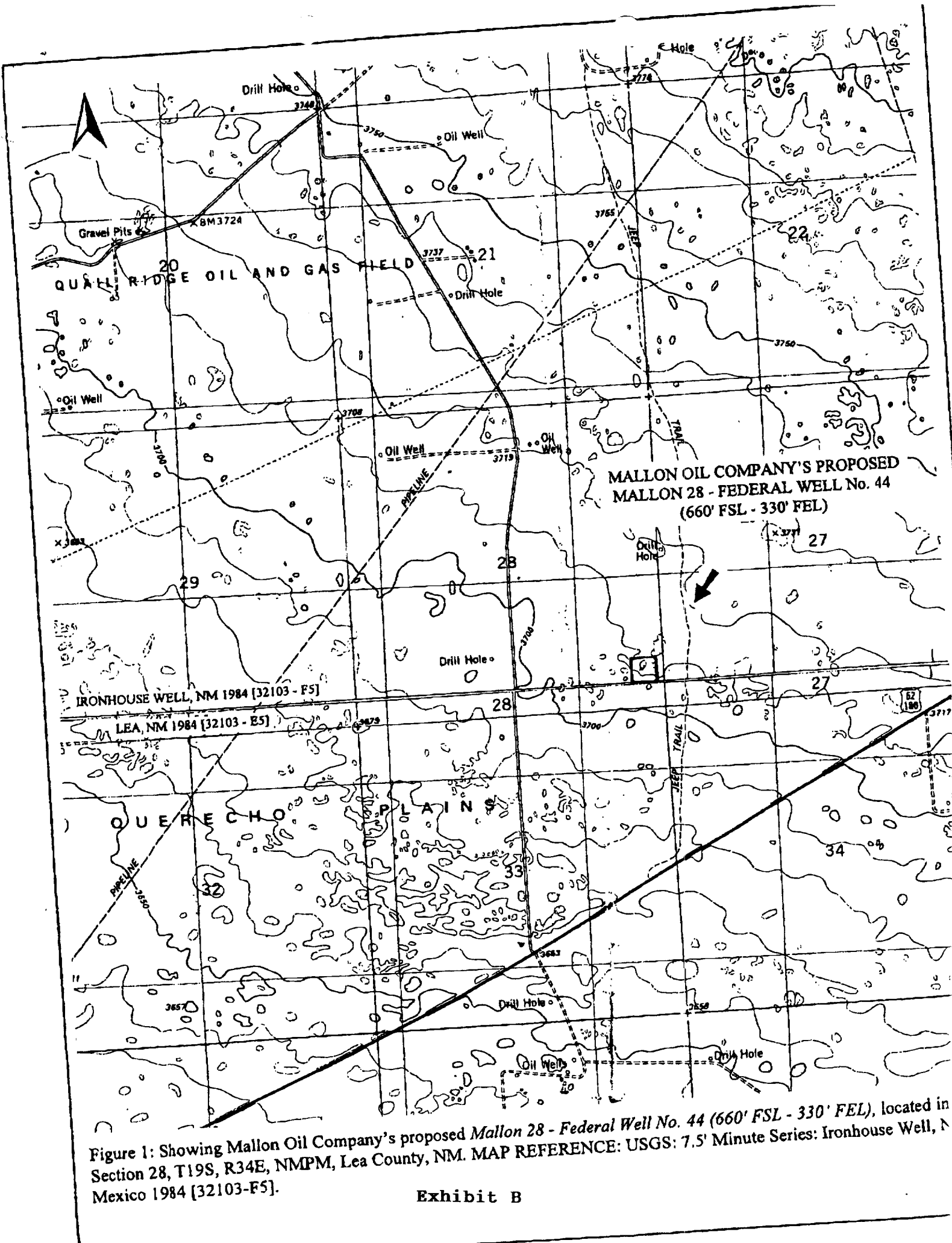
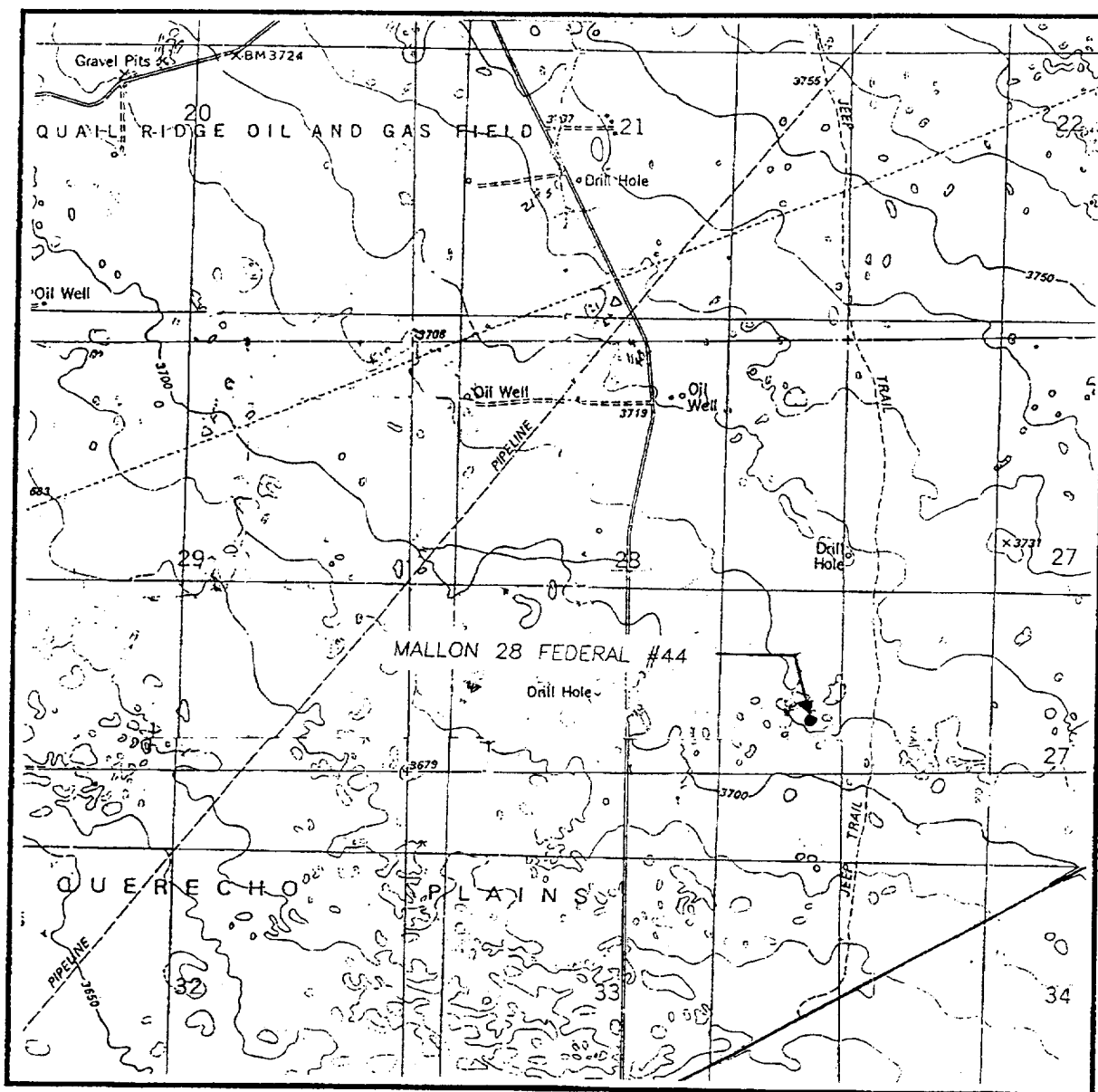


Figure 1: Showing Mallon Oil Company's proposed Mallon 28 - Federal Well No. 44 (660' FSL - 330' FEL), located in Section 28, T19S, R34E, NMPM, Lea County, NM. MAP REFERENCE: USGS: 7.5' Minute Series: Ironhouse Well, N Mexico 1984 [32103-F5].

LOCATION VERIFICATION MAP



SCALE: 1" = 2000'

CONTOUR INTERVAL:

LEA - 10'

IRONHOUSE WELL - 10'

SEC. 28 TWP. 19-S RGE. 34-E

SURVEY N.M.P.M.

COUNTY LEA

DESCRIPTION 660' FSL & 330' FEL

ELEVATION 3712

OPERATOR MALLON OIL COMPANY

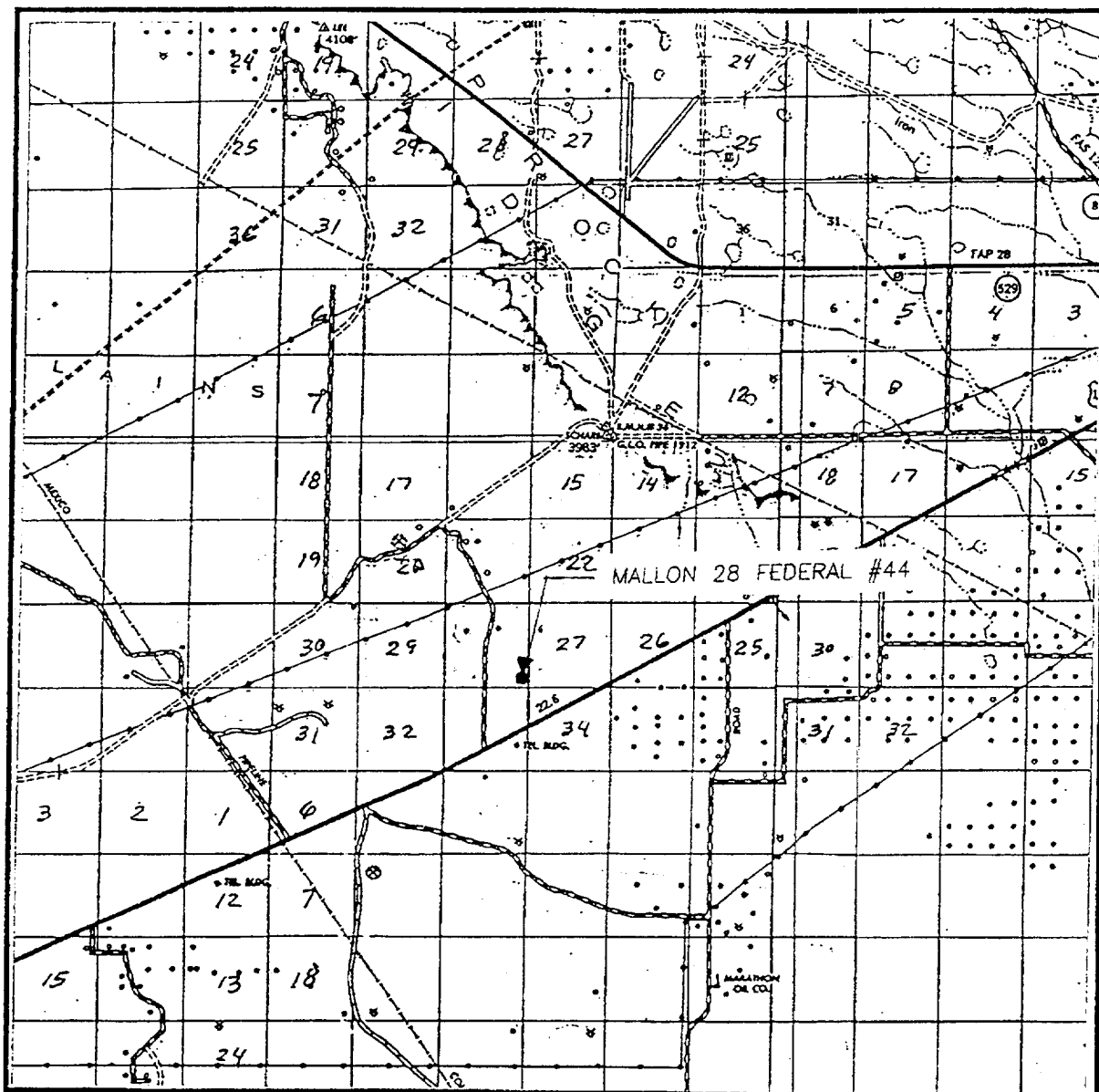
LEASE MALLON 28 FEDERAL

U.S.G.S. TOPOGRAPHIC MAP

LEA, IRONHOUSE WELL, N.M.

JOHN WEST ENGINEERING
HOBBS, NEW MEXICO
(505) 393-3117

VICINITY MAP



SCALE: 1" = 2 MILES

SEC. 28 TWP. 19-S RGE. 34-E

SURVEY N.M.P.M.

COUNTY LEA

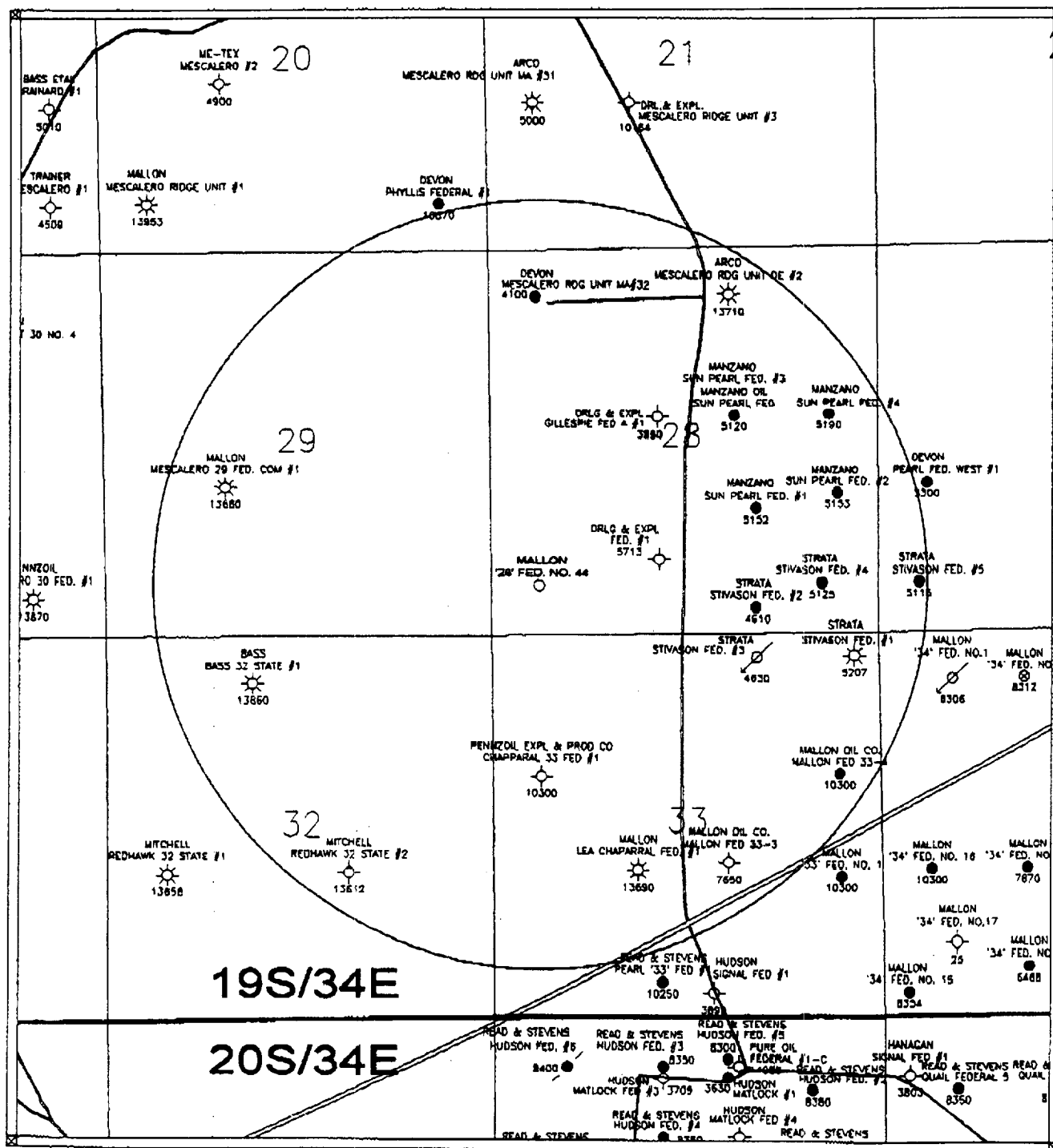
DESCRIPTION 660' FSL & 330' FEL

ELEVATION 3712

OPERATOR MALLON OIL COMPANY

LEASE MALLON 28 FEDERAL

JOHN WEST ENGINEERING
HOBBS, NEW MEXICO
(505) 393-3117



Scale 1:24000.

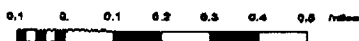


Exhibit C

MALLON OIL COMPANY

**Mailon 28 Federal No. 44
One Mile Radius Map
Lea County, New Mexico**

T193 R34E Sec. 28		
000 FOL 000 FWL		5/16/99

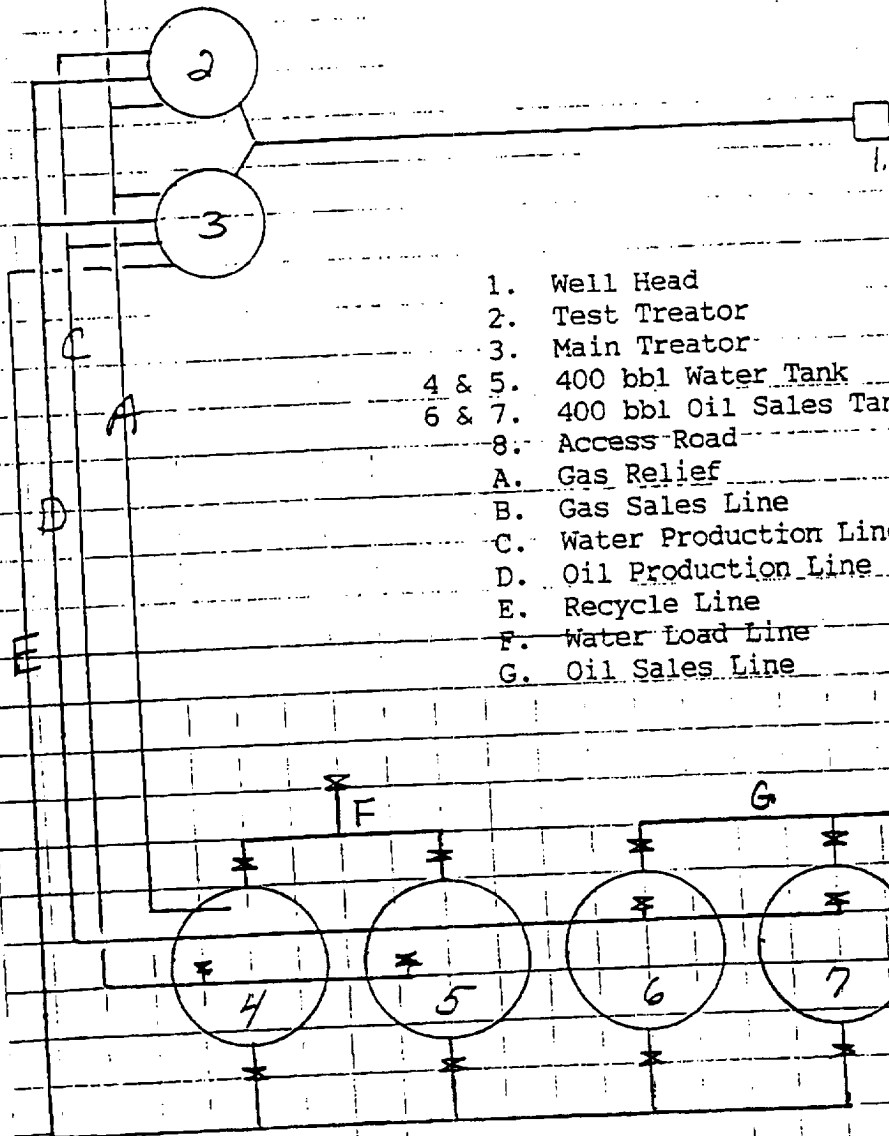
MALLON OIL COMPANY

ENGINEERING CHART

FILE _____
 APPN _____
 DATE _____
 BY _____

SUBJECT Production Facility

Scale 5' =



1. Well Head
2. Test Treator
3. Main Treator
- 4 & 5. 400 bbl Water Tank
- 6 & 7. 400 bbl Oil Sales Tank
8. Access Road
- A. Gas Relief
- B. Gas Sales Line
- C. Water Production Line
- D. Oil Production Line
- E. Recycle Line
- F. Water Load Line
- G. Oil Sales Line

HYDROGEN SULFIDE DRILLING OPERATIONS PLAN

I. HYDROGEN SULFIDE TRAINING

All personnel, whether regularly assigned, contracted, or employed on an unscheduled basis, will receive training from a qualified instructor in the following areas prior to commencing drilling operations on this well:

1. The hazards and characteristics of hydrogen sulfide (H_2S).
2. The proper use and maintenance of personal protective equipment and life support systems.
3. The proper use of H_2S detectors, alarms, warning systems, briefing areas, evacuation procedures, and prevailing winds.
4. The proper techniques for first aid and rescue procedures.

In addition, supervisory personnel will be trained in the following areas:

1. The effects of H_2S on metal components. If high tensile tubulars are to be used, personnel will be trained in their special maintenance requirements.
2. Corrective action and shut-in procedures when drilling or reworking a well and blowout prevention and well control procedures.
3. The contents and requirements of the H_2S Drilling Operations Plan and the Public Protection Plan.

There will be an initial training session just prior to encountering a known or probable H_2S zone (within 3 days or 500 feet) and weekly H_2S and well control drills for all personnel in each crew. The initial training session shall include a review of the site specific H_2S Drilling Operations Plan and the Public Protection Plan. This plan shall be available at the well site. All personnel will be required to carry documentation that they have received the proper training.

– II. H_2S SAFETY EQUIPMENT AND SYSTEMS

Note: All H_2S safety equipment and systems will be installed, tested, and operational when drilling reaches a depth of 500 feet above, or three days prior to penetrating the first zone containing or reasonably expected to contain H_2S .

1. Well Control Equipment:

- A. Choke manifold with a minimum of one remote choke.
- B. Blind rams and pipe rams to accommodate all pipe sizes with properly sized closing unit.

2. Protective equipment for essential personnel:

- A. Mark II Surviveair 30-minute units located in the dog house and at briefing areas, as indicated on well site diagram.

3. H₂S detection and monitoring equipment:

- A. 2 - portable H₂S monitors positioned on location for best coverage and response. These units have warning lights and audible sirens when H₂S levels of 20 ppm are reached.

4. Visual warning systems:

- A. Wind direction indicators as shown on well site diagram.
- B. Caution/Danger signs shall be posted on roads providing direct access to location. Signs will be painted a high visibility yellow with black lettering of sufficient size to be readable at a reasonable distance from the immediate location. Bilingual signs will be used, when appropriate. See example attached.

5. Mud Program:

- A. The mud program has been designed to minimize the volume of H₂S circulated to the surface. Proper mud weight, safe drilling practices, and the use of H₂S scavengers will minimize hazards when penetrating H₂S bearing zones.

6. Metallurgy:

- A. All drill strings, casings, tubing, wellhead, blowout preventers, drilling spool, kill lines, choke manifold and lines, and valves shall be suitable for H₂S service.
- B. All elastomers used for packing and seals shall be H₂S trim.

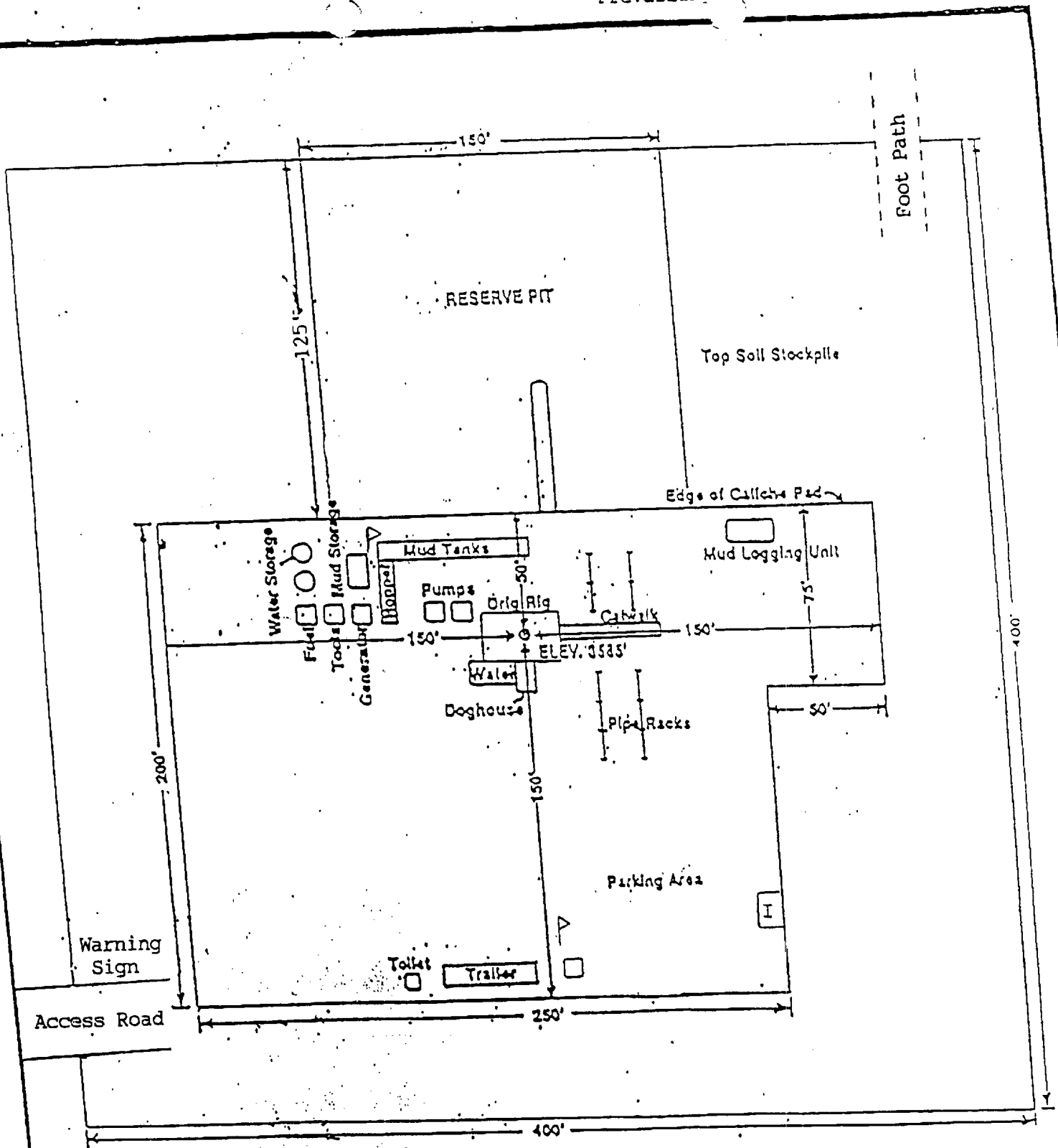
7. Communication

- A. Cellular telephone communications in company vehicles.

8. Well Testing:

- A. Drill stem testing will be performed with a minimum number of personnel in the immediate vicinity which are necessary to safely and adequately conduct the test. The drill stem testing will be conducted during daylight hours and formation fluids will not be flowed to the surface. All drill stem testing operations conducted in an H₂S environment will use the closed chamber method of testing.

Prevailing Wind Direction: Northwest



- △ H₂S Monitors with alarms at the bell nipple and shale shaker
- ▷ Wind Direction Indicators
- Safe briefing areas with Caution signs and protective breathing equipment, min. 150 feet from wellhead, (I) designates primary area.

WARNING

YOU ARE ENTERING AN H2S AREA

AUTHORIZED PERSONNEL ONLY

- 1. BEARDS OR CONTACT LENSES NOT ALLOWED**
- 2. HARD HATS REQUIRED**
- 3. SMOKING IN DESIGNATED AREAS ONLY**
- 4. BE WIND CONSCIOUS AT ALL TIMES**
- 5. CHECK WITH A MALLON OIL COMPANY REPRESENTATIVE AT MAIN OFFICE**

MALLON OIL COMPANY

1-505-885-4596



Desert West

ARCHAEOLOGICAL SERVICES

May 18, 1998

Mr. Duane Winkler
MALLON OIL COMPANY
P.O. Box 3256
Carlsbad, New Mexico 88220

Dear Mr. Winkler:

Enclosed please find your copy of Desert West Archaeological Services (DWAS) Clearance Report for Mallon Oil Company's proposed Mallon 28 - Federal Well No. 44 (660' FSL - 330' FEL). The proposed project is located in Section 28 of T19S, R34E, NMPM, Lea County, New Mexico. No new or previously recorded sites were encountered. Archaeological clearance for Mallon Oil Company's proposed Mallon 28 - Federal No. 44 (660' FSL - 330' FEL) is recommended as presently staked. No further archaeological work should be required.

The Bureau of Land Management will review this report and make the final decision on archaeological clearance for your project.

If you have any questions, please call our office.

Sincerely,



Arita Slate

as/pc

Enclosure

Bureau of Land Management, Roswell District, Carlsbad Resource Area, NM (2)

APPENDIX B.

TITLE PAGE/ABSTRACT/ NEGATIVE SITE REPORT ROSWELL DISTRICT

BLM/ RDO 1/95

1. BLM Report No.	2. (ACCEPTED) (REJECTED)	3. NMCRIS No.: 60874
4. Title of Report (Project Title): Archaeological survey of <i>Mallon Oil Company's</i> proposed Mallon 28 - Federal Well No. 44 (660' FSL - 330' FEL) The proposed project area is located in Section 28, T19S, R34E, Lea County, New Mexico.		5. Project Date(s): 05-18-1998
7. Consultant Name & Address: Direct Charge: Peter C. Condon Name: Desert West Archaeological Services Address: P.O. Box 645, Carlsbad, NM 88220 Authors Name: David Wilcox; additional author: Peter C. Condon field personnel names: Peter C. Condon and Richard Cook Phone (505) 887-7646		6. Report Date: 05-18-1998
		8. Permit No.: 123-2920-98P
		9. Consultant Report No.: 98-21MY
10. Sponsor Name and Address: Indiv. Responsible: Mr. Duane Winkler Name: Mallon Oil Company Address: P.O. Box 3256, Carlsbad, New Mexico 88220 Phone (505) 885-4596		11. For BLM Use only.
		12 ACREAGE: Total No. of acres surveyed: 3.67 acres <u>Per Surface</u> Ownership: Federal: 3.67 Acres
13. Location & Area: (Maps Attached if negative survey)		
e. Location: [figure 1]		
a. State : NM	T19S, R34E, Section 28: Well Pad: SE1/4, SE1/4	
Proposed Well Pad Footages: 660' FSL - 330' FEL		
b. County: Lea	f. 7.5' Map Name(s) and Code Number(s): USGS Series: Ironhouse Well, NM 1984 [32103 - F5] Lea, NM 1984 [32103 - E5]	
c. BLM District: Roswell		
Resource Area: Carlsbad		
g. Area: Block: Impact: Unknown, within surveyed area Surveyed: Mallon 28 - Federal Well No. 44: (660' FSL - 330' FEL): 400' x 400'		
Linear: Impact: Unknown, within surveyed area Surveyed: NA		
d. Nearest City or town: Carlsbad, NM		

14. a. Records Search:

Location: A prefield records search of BLM and ARMS records was conducted by Chris Owens.

Date: 05-17-1998

List by LA# All sites within .25 miles of the project: NA

(Those sites within 500' are to be shown on the project map)

b. Description of undertaking: Mallon Oil Company's proposed Mallon 28 - Federal Well No. 44 (660' FSL - 330' FEL), located in Section 28, T19S, R34E, NMPM, Lea County, NM. (Access provided by existing lease road)

c. Environmental Setting (NRCS soil designation; vegetative community; etc.): The proposed project area is situated within an undulating dunal environment, which is characterized by coppice stabilized dunes and moderately deep deflation basins. The proposed project area is moderately impacted by past oil and gas exploration activities; **NRCS:** Pyote - Maljamar - Kermit association; Gently undulating and rolling, deep, sandy soils. **Vegetative community:** Mesquite, shinnery oak, snakeweed, narrow leaf yucca, prickly pear cactus and assorted grasses, forbs and wildflowers.

d. Field Methods: straight and zigzag transects

Transect Intervals: no greater than 15 meters

Crew Size: Two archaeologists

Time in Field: 30 minutes.

Collections: N/A


15. Cultural Resource Findings:

a. Identification and description: (Location shown on Project map) NA

16. Management Summary (Recommendations): Archaeological clearance for Mallon Oil Company's proposed Mallon 28 - Federal Well No. 44 (660' FSL - 330' FEL) is *recommended* as presently staked. If any cultural resources are encountered during construction, the BLM and DWAS are to be immediately notified.

I attest that the information provided above is correct and accurate and meets all appreciable BLM standards.

Responsible Archaeologist


Signature

05-18-98

Date

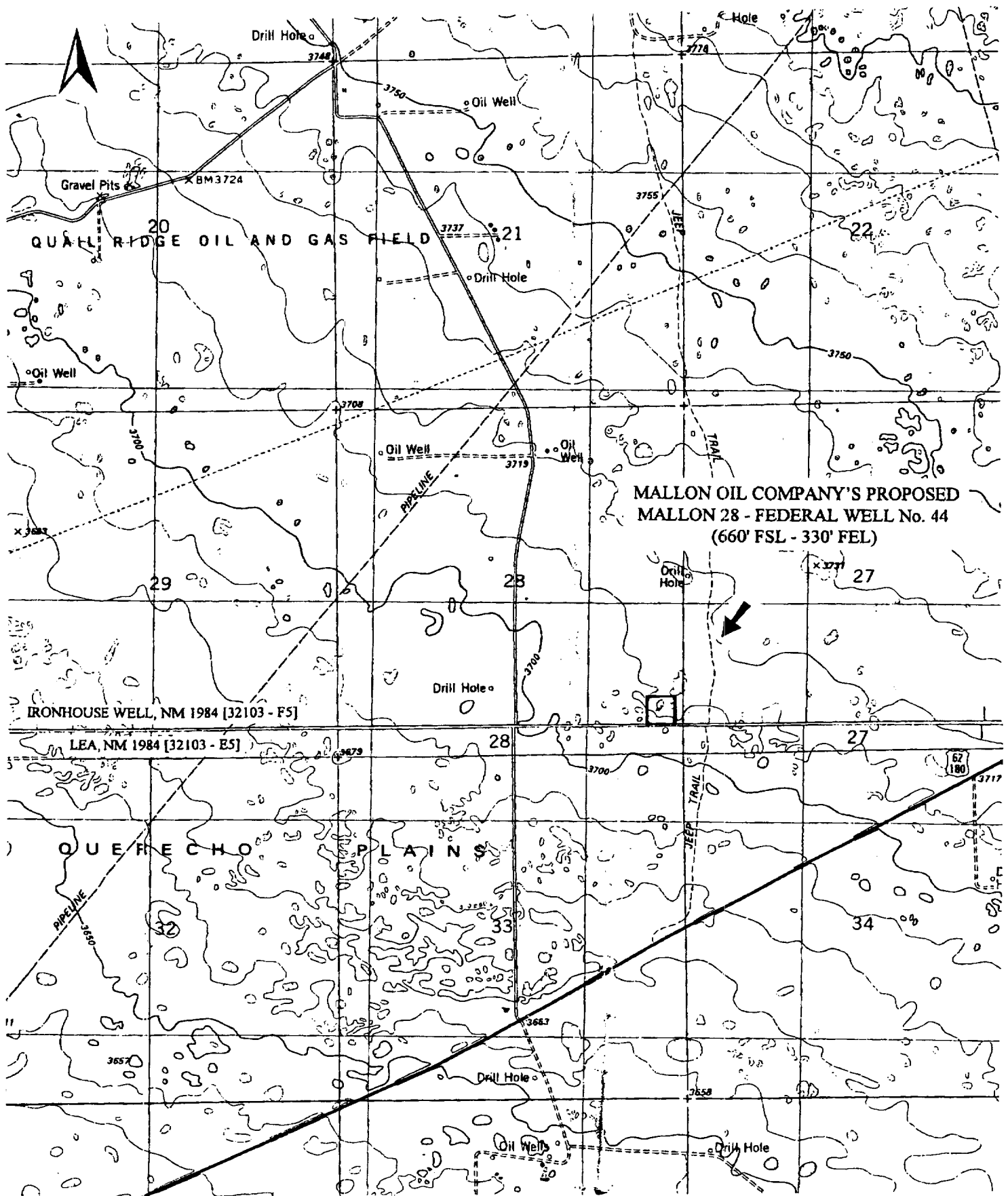


Figure 1: Showing Mallon Oil Company's proposed *Mallon 28 - Federal Well No. 44 (660' FSL - 330' FEL)*, located in Section 28, T19S, R34E, NMPM, Lea County, NM. MAP REFERENCE: USGS: 7.5' Minute Series: Ironhouse Well, New Mexico 1984 [32103-F5].