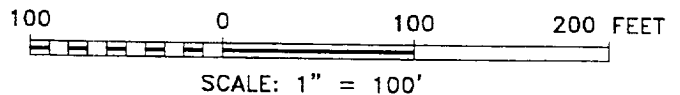
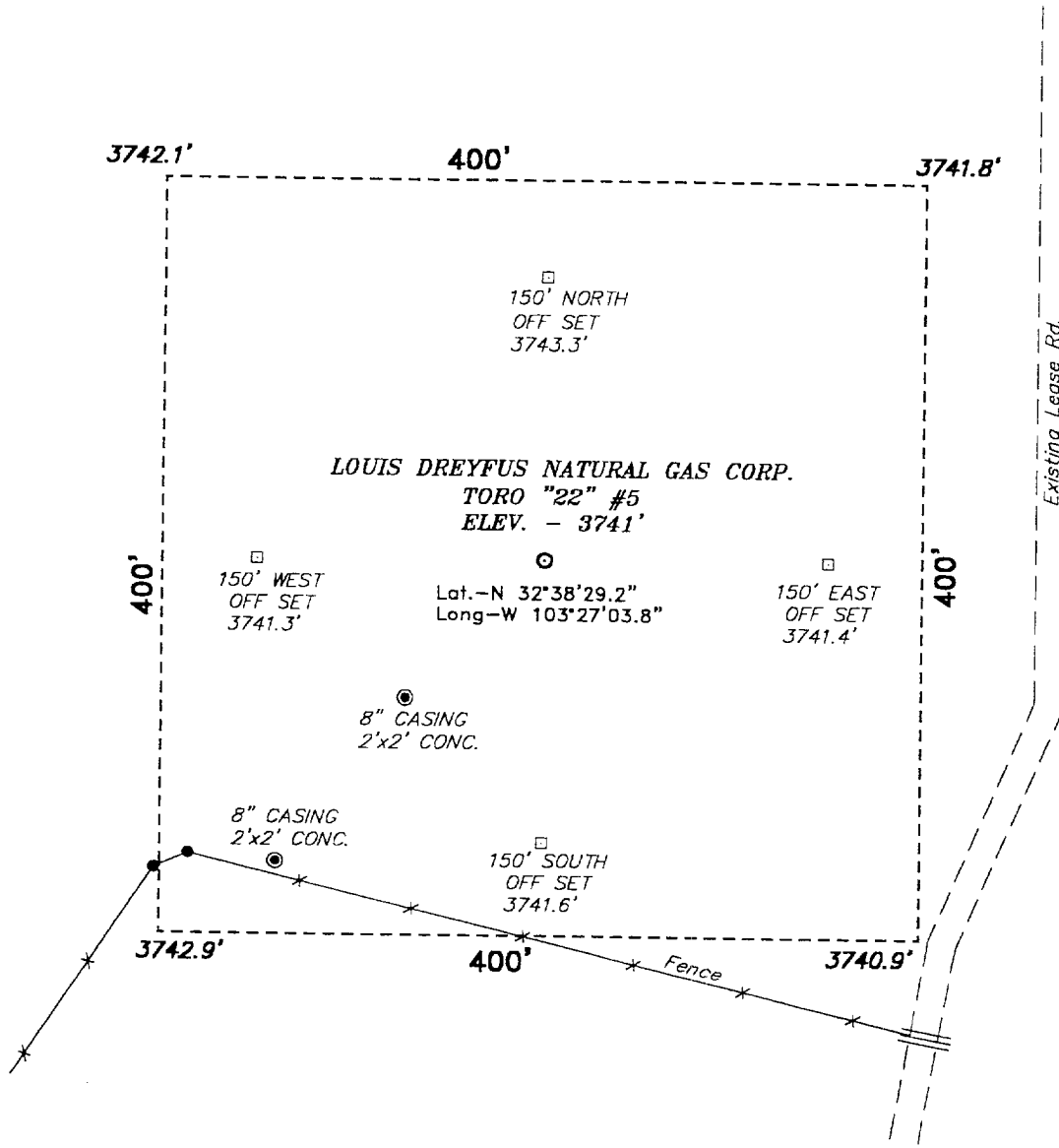


SECTION 22, TOWNSHIP 19 SOUTH, RANGE 35 EAST, N.M.P.M.,  
LEA COUNTY, NEW MEXICO.



Directions to Location:

FROM THE JUNCTION OF STATE HWY 529 & US HWY 62/180, GO SOUTHWESTERLY ON 62/180 APPROX. 4.5 MILES TO A LEASE ROAD; THENCE SOUTHEAST ON LEASE ROAD APPROX. 1.5 MILE TO A POINT AT THE SOUTHEAST CORNER OF THE PROPOSED WELL LOCATION.

**Louis Dreyfus Natural Gas Corp.**

REF: Toro "22" #5 / Well Pad Topo

THE TORO "22" No. 5 LOCATED 990' FROM THE SOUTH LINE AND 810' FROM THE WEST LINE OF SECTION 22, TOWNSHIP 19 SOUTH, RANGE 35 EAST, N.M.P.M., LEA COUNTY, NEW MEXICO.

**BASIN SURVEYS** P.O. BOX 1786 - HOBBS, NEW MEXICO

W.O. Number: 0497 Drawn By: **K. GOAD**

Date: 10-17-2000 Disk: KJG #122 - 0497A.DWG

Survey Date: 10-12-2000 Sheet 1 of 1 Sheets

