

DISTRICT I:

P.O. Box 1980, Hobbs, NM 88241-1980

DISTRICT II:

P.O. Box Drawer DD, Artesia, NM 88211-0719

DISTRICT III:

1000 Rio Brazos Rd., Aztec, NM 87410

DISTRICT IV:

P.O. Box 2088, Santa Fe, NM 87504-2088

State of New Mexico

Energy, Minerals and Natural Resources Department

Form C-101

Revised February 10, 1994

Instructions on back

Submit to Appropriate District Office

State Lease - 6 Copies

Fee Lease - 5 Copies

☐ AMENDED REPORT**OIL CONSERVATION DIVISION**

P.O. Box 2088

Santa Fe, New Mexico 87504-2088

APPLICATION FOR PERMIT TO DRILL, RE-ENTER, DEEPEN, PLUGBACK, OR ADD A ZONE

¹ Operator Name and Address TEXACO EXPLORATION & PRODUCTION INC. P.O. Box 3109, Midland Texas 79702		² OGRID Number 022351
⁴ Property Code 20361		⁵ Property Name NEW MEXICO 'E' STATE NCT-2
		³ API Number 30-025-34011
		⁶ Well No. 2

⁷ Surface Location									
UI or lot no.	Section	Township	Range	Lot.Idn	Feet From The	North/South Line	Feet From The	East/West Line	County
F	23	19-S	36-E		2310	NORTH	2175	WEST	LEA

⁸ Proposed Bottom Hole Location If Different From Surface									
UI or lot no.	Section	Township	Range	Lot.Idn	Feet From The	North/South Line	Feet From The	East/West Line	County
⁹ Proposed Pool 1 MONUMENT ABO					¹⁰ Proposed Pool 2				

¹¹ Work Type Code N	¹² WellType Code O	¹³ Rotary or C.T. ROTARY	¹⁴ Lease Type Code S	¹⁵ Ground Level Elevation 3727'
¹⁶ Multiple No	¹⁷ Proposed Depth 8000'	¹⁸ Formation ABO	¹⁹ Contractor NABORS	²⁰ Spud Date 6/15/97

²¹ Proposed Casing and Cement Program					
SIZE OF HOLE	SIZE OF CASING	WEIGHT PER FOOT	SETTING DEPTH	SACKS OF CEMENT	EST. TOP
11	8 5/8	24#	1330'	600 SACKS	SURFACE
7 7/8	5 1/2	15.5#	8000'	1400 SACKS	1000'

²² Describe the proposed program. If this application is to DEEPEN or PLUG BACK give the data on the present productive zone and proposed new productive zone. Describe the blowout prevention program, if any. Use additional sheets if necessary.

CEMENTING PROGRAM:

SURFACE CASING - 450 SACKS CLASS C W/ 4% GEL, 2% CACL2 (13.5 PPG, 1.74 CF/S, 9.11 GW/S). F/B 150 SACKS CLASS C W/ 2% CACL2 (14.8 PPG, 1.34 CF/S, 6.3 GW/S).

PRODUCTION CASING - 800 SACKS 35/65 POZ CLASS H W/6% GEL, 5% SALT, 1/4# FLOCELE (12.4 PPG, 2.14 CF/S, 11.9 GW/S). F/B 600 SACKS 50/50 POZ CLASS H W/ 2% GEL, 5% SALT, 1/4# FLOCELE (14.2 PPG, 1.35 CF/S, 6.3 GW/S)

Permit Expires 1 Year From Approval
Date Unless Drilling Underway

²³ I hereby certify that the rules and regulations of the Oil Conservation Division have been complied with and that the information given above is true and complete to the best of my knowledge and belief.

Signature

C. Wade Howard

Printed Name

C. Wade Howard

Title

Eng. Assistant

Date

6/4/97

Telephone

688-4606

OIL CONSERVATION DIVISIONORIGINAL SIGNED BY CHRIS WILLIAMS
DISTRICT I SUPERVISOR

Approved By:

Title:

Approval Date:

Expiration Date:

Conditions of Approval:
Attached ☐

JUN 06 1997

DISTRICT I
P. O. Box 1980, Hobbs, NM 88240

DISTRICT II
P. O. Drawer DD, Artesia, NM 88210

DISTRICT III
1000 Rio Brazos Rd., Aztec, NM 87410

DISTRICT IV
P. O. Box 2088, Santa Fe, NM 87504-2088

State of New Mexico
Energy, Minerals and Natural Resources Department

Form C-102
Revised February 10, 1994

Instructions on back

Submit to Appropriate District Office

State Lease-4 copies
Fee Lease-3 copies

OIL CONSERVATION DIVISION
PO Box 2088
Santa Fe, NM 87504-2088

☐ AMENDED REPORT

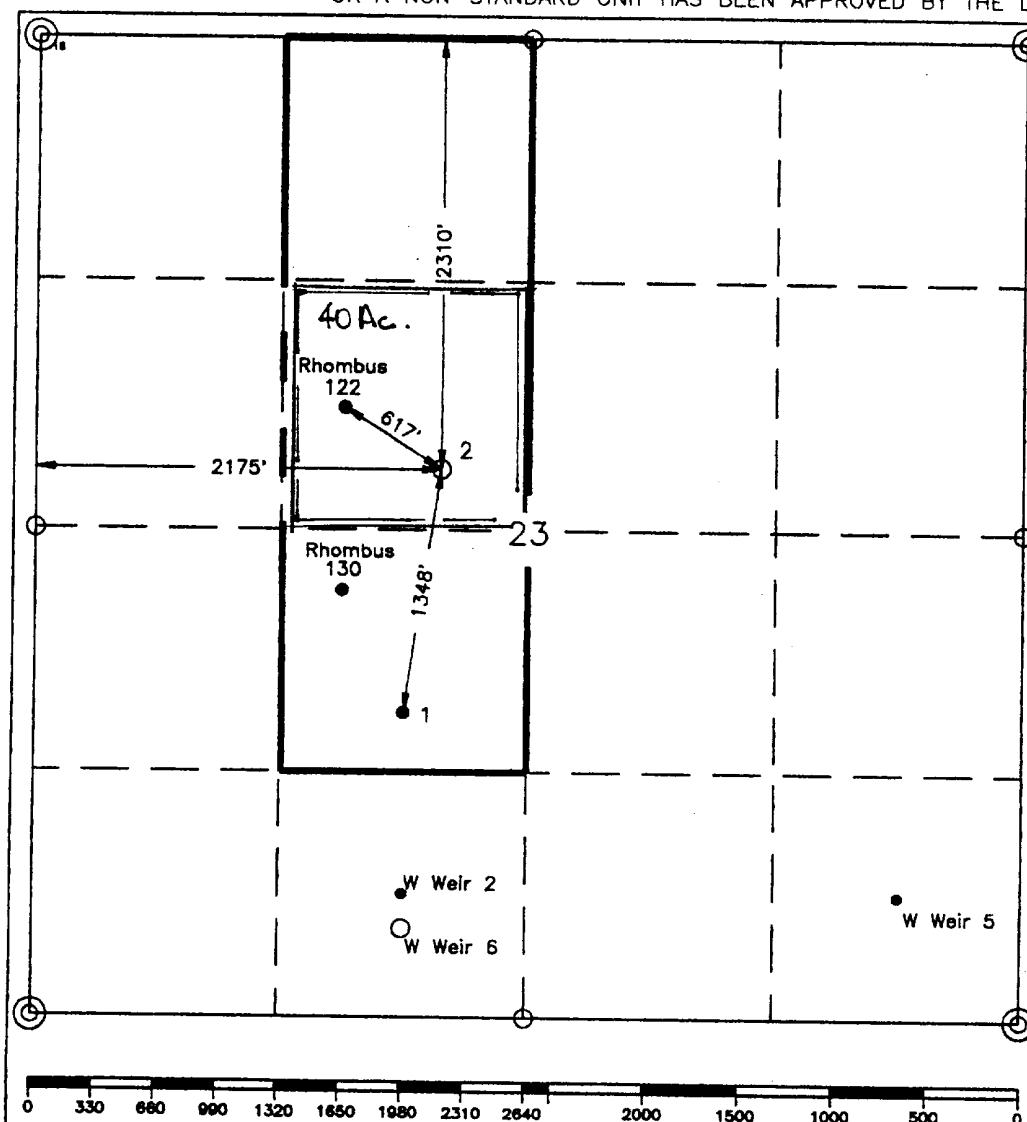
WELL LOCATION AND ACREAGE DEDICATION PLAT

¹ API Number 3D-025-34D11		² Pool Code 46970		³ Pool Name Monument ABO	
⁴ Property Code 20361		⁵ Property Name New Mexico "E" State NCT-2			⁶ Well Number 2
⁷ GRID No. 22351		⁸ Operator Name TEXACO EXPLORATION & PRODUCTION, INC.			⁹ Elevation 3727'

¹⁰ Surface Location									
UL or lot no. F	Section 23	Township 19-S	Range 36-E	Lot Idn	Feet from the 2310'	North/South line North	Feet from the 2175'	East/West line West	⁷ County Lea

¹¹ Bottom Hole Location If Different From Surface									
UL or lot no.	Section	Township	Range	Lot Idn	Feet from the	North/South line	Feet from the	East/West line	⁷ County
¹² Dedicated Acres 40		¹³ Joint or Infill		¹⁴ Consolidation Code		¹⁵ Order No.			

NO ALLOWABLE WILL BE ASSIGNED TO THIS COMPLETION UNTIL ALL INTERESTS HAVE BEEN CONSOLIDATED
OR A NON-STANDARD UNIT HAS BEEN APPROVED BY THE DIVISION.



¹⁶ OPERATOR CERTIFICATION I hereby certify that the information contained herein is true and complete to the best of my knowledge and belief.	
Signature <i>C. Wade Howard</i>	Printed Name C. Wade Howard
Position Engineer's Assistant	
Company Texaco Expl. & Prod. Inc.	
Date June 4, 1997	
¹⁷ SURVEYOR CERTIFICATION I hereby certify that the well location shown on this plat was plotted from field notes of actual surveys made by me or under my supervision, and that the same is true and correct to the best of my knowledge and belief.	
Date Surveyed May 28, 1997	
Signature & Seal of Professional Surveyor <i>John S. Piper</i>	
Certificate No. 7254 John S. Piper	
Sheet	

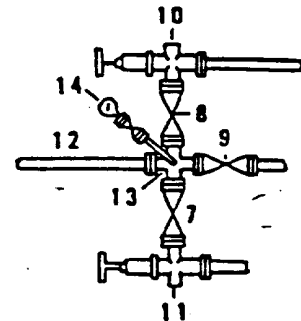
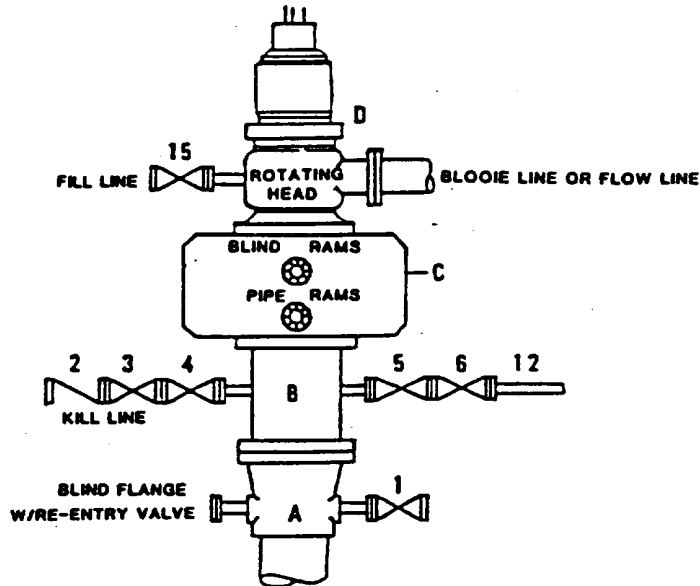
○ = Staked Location • = Producing Well = Injection Well ◊ = Water Supply Well ◆ = Plugged & Abandon Well

ABOVE DATE DOES NOT
INDICATE WHEN
CONFIDENTIAL LOGS
WILL BE RELEASED

ELF 4/28/00

**DRILLING CONTROL
CONDITION II-B 3000 WP
FOR AIR DRILLING OR
WHERE NITROGEN OR AIR BLOWS ARE EXPECTED**

H₂S TRIM REQUIRED
YES _____ NO _____



DRILLING CONTROL

MATERIAL LIST - CONDITION II - B

- A Texaco Wellhead
- B 3000# W.P. drilling spool with a 2" minimum flanged outlet for kill line and 3" minimum flanged outlet for choke line.
- C 3000# W.P. Dual ram type preventer, hydraulic operated with 1" steel, 3000# W.P. control lines (where sub-structure height is adequate, 2 - 3000# W.P. single ram type preventers may be utilized).
- D Rotating Head with fill up outlet and extended Blooe Line.
- 1,3,4, 7,8, 2" minimum 3000# W.P. flanged full opening steel gate valve, or Halliburton Lo Torc Plug valve.
- 2 2" minimum 3000# W.P. back pressure valve.
- 5,6,9 3" minimum 3000# W.P. flanged full opening steel gate valve, or Halliburton Lo Torc Plug valve.
- 12 3" minimum schedule 80, Grade "B", seamless line pipe.
- 13 2" minimum x 3" minimum 3000# W.P. flanged cross.
- 10,11 2" minimum 3000# W.P. adjustable choke bodies.
- 14 Cameron Mud Gauge or equivalent (location optional in choke line).
- 15 2" minimum 3000# W.P. flanged or threaded full opening steel gate valve, or Halliburton Lo Torc Plug valve.



TEXACO, INC.
MIDLAND DIVISION
MIDLAND, TEXAS



SCALE	DATE	EST NO	DRG NO
DRAWN BY			
CHECKED BY			
APPROVED BY			

EXHIBIT C

ABOVE DATE DOES NOT
INDICATE WHEN
CONFIDENTIAL LOGS
WILL BE RELEASED

ELF 4/28/00