

District I
PO Box 1980, Hobbs, NM 88241 1980
District II
PO Drawer DD, Artesia, NM 88211-0719
District III
1000 Rio Brazos Rd., Aztec, NM 87410
District IV
PO Box 2088, Santa Fe, NM 87504-2088

State of New Mexico
Energy, Minerals & Natural Resources Department

OIL CONSERVATION DIVISION
PO Box 2088
Santa Fe, NM 87504-2088

Form C-101
Revised February 10, 1994
Instructions on back
Submit to Appropriate District Office
State Lease - 6 Copies
Fee Lease - 5 Copies

☐ AMENDED REPORT

APPLICATION FOR PERMIT TO DRILL, RE-ENTER, DEEPEN, PLUGBACK, OR ADD A ZONE

' Operator Name and Address. Conoco Inc 10 Desta Dr. Ste. 430E Midland, Tx. 79705-4500		' OGRID No_ 005073
		' API Number 30 - 0 25 - 34207
' Property Code 003094 22103	' Property Name State A-3	' Well No. 3

' Surface Location

UL or lot no.	Section	Township	Range	Lot Idn	Feet from the	North/South line	Feet from the	East/West line	County
I	3	20-S	37-E		2310	SOUTH	990	EAST	LEA

s Proposed Bottom Hole Location If Different From Surface

UL or lot no	Section	Township	Range	Lot Idn	Feet from the	North/South line	Feet from the	East/West line	County
' Proposed Pool 1					' Proposed Pool 2				
SKAGGS DRINKARD									

" Work Type Code N 16 Multiple NO	" Well Type Code O 17 Proposed Depth 7000'	" Cable/Rotary R 18 Formation DRINKARD	" Lease type Code S 19 Contractor CAPSTAR DRLG.	14 Ground Level Elevation 3577' 20 Spud Date 12/1/97
--	---	---	--	---

21 Proposed Casing and Cement Program

Hole Size	Casing Size	Casing weight/foot	Setting Depth	Sacks of Cement	Estimated TOC
12-1/4"	8-5/8"	23#	1250'	515	SURFACE
7-7/8"	5-1/2"	17#	7000'	1520	SURFACE

Describe the proposed program. If this application is to DEEPEN or PLUG BACK give the data on the present productive zone and proposed new productive zone. Describe the blowout prevention program, if any. Use additional sheets if necessary.

It is proposed to drill a vertical wellbore through the Drinkard formation. The well will be drilled and equipped according to the following additional attachments:

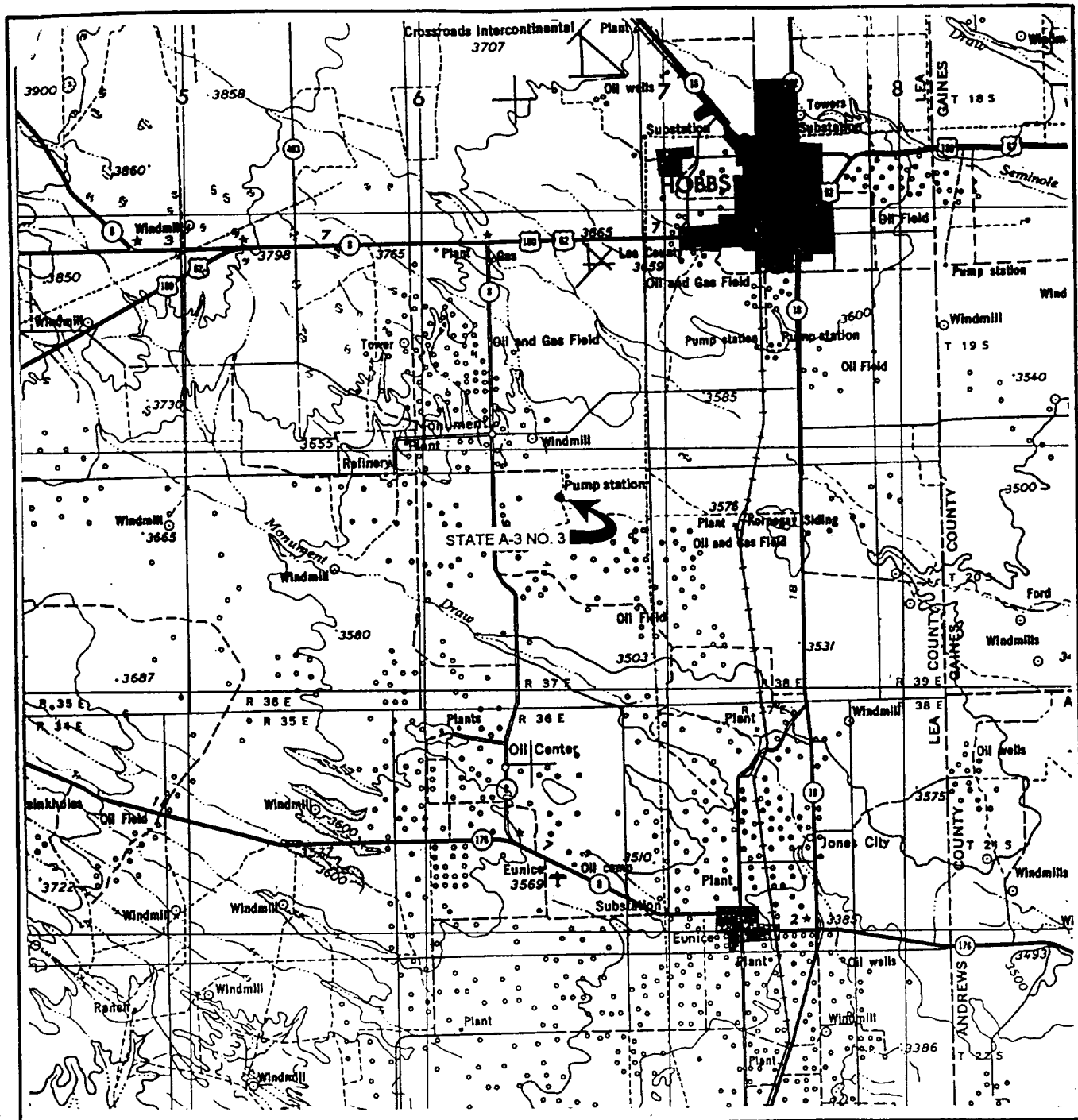
1. Well Location & Acreage Dedication Plat (C-102)
2. Proposed Well Plan Outline
3. Cementing program
4. BOP/Choke diagram

Permit Expires 1 Year From Approval
Date Unless Drilling Underway

23 I hereby certify that the information given above is true and complete to the best of my knowledge and belief. Signature: <i>Mike L. Mankin</i>		OIL CONSERVATION DIVISION	
Printed name: Mike L. Mankin		Approved by: ORIGINAL SIGNED BY CHRIS WILLIAMS DISTRICT I SUPERVISOR	
Title: Right of Way Agent		Title:	
Date: 11/14/97		Approval Date: NOV 21 1997 Expiration Date:	
Phone: 915/686-5794		Conditions of Approval: Attached	

~~8278~~

VICINITY MAP



WTC 45072

Scale: 1" = 4 Miles

SEC. 3 TWP. 20-S RGE. 37-E

SURVEY N.M.P.M

COUNTY LEA STATE NM

DESCRIPTION 2310' FSL & 990' FEL

ELEVATION 3577'

OPERATOR CONOCO INC.

LEASE STATE A-3 NO. 3

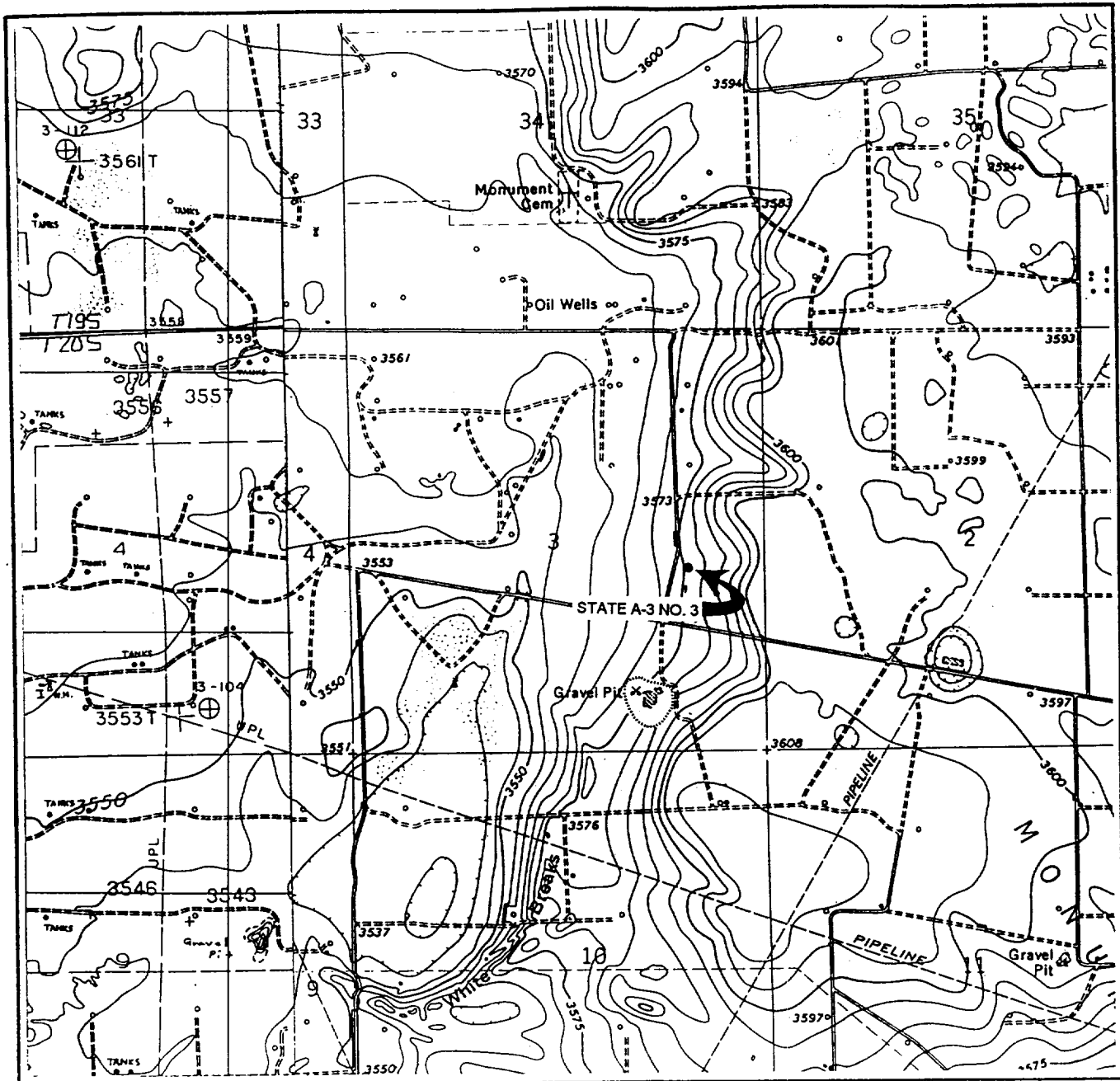
WEST TEXAS CONSULTANTS, INC.

ENGINEERS-PLANNERS-SURVEYORS

MIDLAND, TEXAS

915-685-3800

LOCATION VERIFICATION MAP



SCALE: 1" = 2000'

WTC 45072

SEC. 3 TWP. 20-S RGE. 37-E

SURVEY N.M.P.M

COUNTY LEA STATE NM

DESCRIPTION 2310' FSL & 990' FEL

ELEVATION 3577'

OPERATOR CONOCO INC.

LEASE STATE A-3 NO. 3

USGS TOPO MAP
MONUMENT SOUTH, NM - HOBBS SW, NM

CONTOUR INTERVAL 5'

WEST TEXAS CONSULTANTS, INC.

ENGINEERS-PLANNERS-SURVEYORS

MIDLAND, TEXAS

915-685-3800

BEGINNING at a point in an existing road, from which point the southeast corner of Section 3, T-20-S, R-37-E, N.M.P.M., Lea County, New Mexico, bears S 00° 03' 42" W, 2185.0 feet and N 89° 58' 58" E, 1210.0 feet; THENCE N 89° 58' 58" E, with centerline of proposed road, 95.0 feet to the southwest corner of well pad for Conoco Inc. STATE A-3 WELL No. 3, for the end of this road, from which point the southeast corner of Section 3 bears N 89° 58' 58" E, 1115.0 feet and S 00° 03' 42" W, 2185.0 feet.

Carl F. Zito



Survey Date: 11-7-97	Date: 11-10-97	Scale: 1" = 1000'
WTC No. 45072	Drawn By: R.S.	Sheet 1 of 1

PROPOSED WELL PLAN OUTLINE

WELL NAME
LOCATION

STATE A-3 #3

'990 FEL & 2310' FSL, SEC. 3, T-20S, R-37E, LEA CO.

Ground Level :
Kelly Bushing:

TVD IN 1000'	MD	FORMATION TOPS & TYPE	DRILLING PROBLEMS	TYPE OF FORMATION EVALUATION	HOLE SIZE	CASING SIZE	DEPTH	FRAC GRAD	FORMATION PRESSURE GRADIENT	MUD WT	MUD TYPE	DAYS
0			POSSIBLE HOLE ENLARGEMENT AND SLOUGHING		12-1/4"				NORMAL	8.4 - 8.5	FRESH	
1		RUSTLER 1305' TOP SALDO SALT 1395'	WASHOUTS IN SALT SECTION F/1400' - 2600'			8-5/8" 238, M-50, ST&C 515 sx, circ.	1250'			10	BRINE	3
2		BS SALDO SALT 2542' YATES 2634' SEVEN RIVERS 2896'		MUDLOGGERS ON @ 2800'		Top 2nd Stage Tail at 2600'						
3		QUEEN 3428' PENROSE 3536' GRAYBURG 3744'		H2S MONITOR ON @ 3000'	7-7/8"							
4		SAN ANDRES 4128'				DV Tool @ 4000'			LESS THAN 8.3			7
5		GLORIETA 5192'	State A-2A v 7 lost 700 bbls 10 ppg brine at 4576 - 4650' Cured with LCM & mud up			Top 1st Stage Tail at 5700'						
6		BLINEBRY 5896' TUBB 6380' DRINKARD 6645'										
7		TD @ 7000'		GR-CAL-DLL-MLL and FDC-CNL-PE-Spect GR 2600'-TD. Pull GR-CAL to surface casing. Only run SG across Drinkard, Blinebry & Tubb	5-1/2"	178, K-55, LT&C 1520 sx, circ.	7000'		LESS THAN 8.3 BHP = 2750 psi	10	STARCH- GEL @ TD	17
8												

DATE

14-Nov-97

APPROVED

Jim Tietema
Jim Tietema, Drilling Engineer

Karie Bundy
Karle Bundy, Reservoir Engineer

08:42:44 AM

Well Name : State A-3 #3

Location : 990' FEL & 2310' FSL Sec 3, T-20S, R-37E, Lea County, New Mexico

Casing Program :

Surface 8 5/8" casing in 12 1/4" Hole at 1250 ft.
Production 5 1/2" casing in 7 7/8" Hole at 7000 ft.

Cementing Program :

Surface

Lead 315 sacks Class C Mixed at 12.7 ppg
Additives 35:65:6 (Poz:Cem:Gel) + 2% CACI.2
+ 0.25 pps Cello-Flake

Tail 200 sacks Class C Mixed at 14.8 ppg
Additives 2% A-7P

Production

1ST Stage

Lead 195 sacks Class C Mixed at 12 ppg
Additives 16% Gel + 0.4% CD-32 + 0.2% SMS

Tail 295 sacks Class C Mixed at 14.8 ppg
Additives 1.1% FL-62 + 1% BA-58 + 3% Salt + 0.3% CD-32
+ 0.2% SMS

Free Water 0 % Fluid Loss 45 cc/30 min.

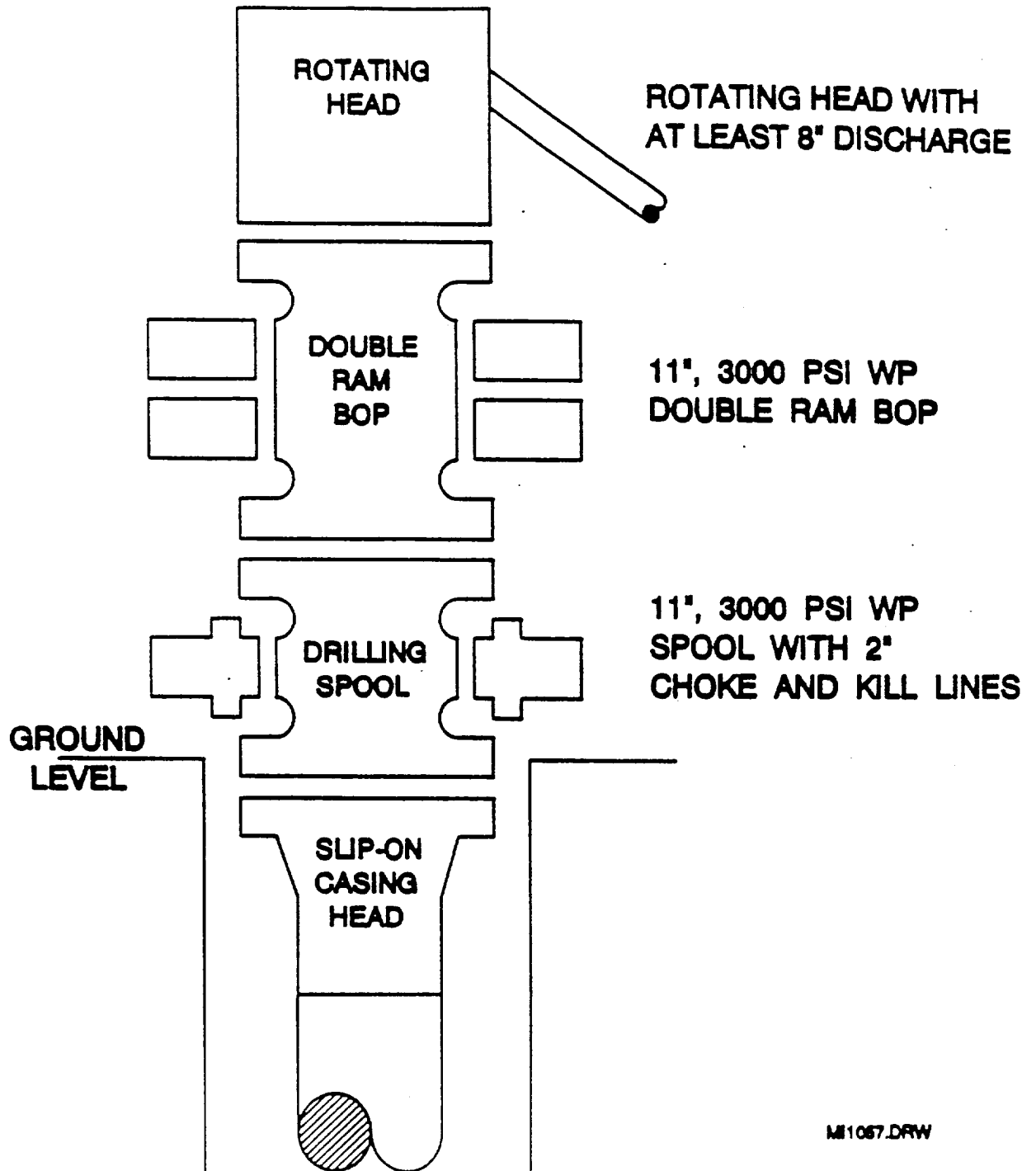
2nd Stage

Lead 480 sacks Class C Mixed at 12 ppg
Additives 16% Gel + 0.4% CD-32 + 0.2% SMS

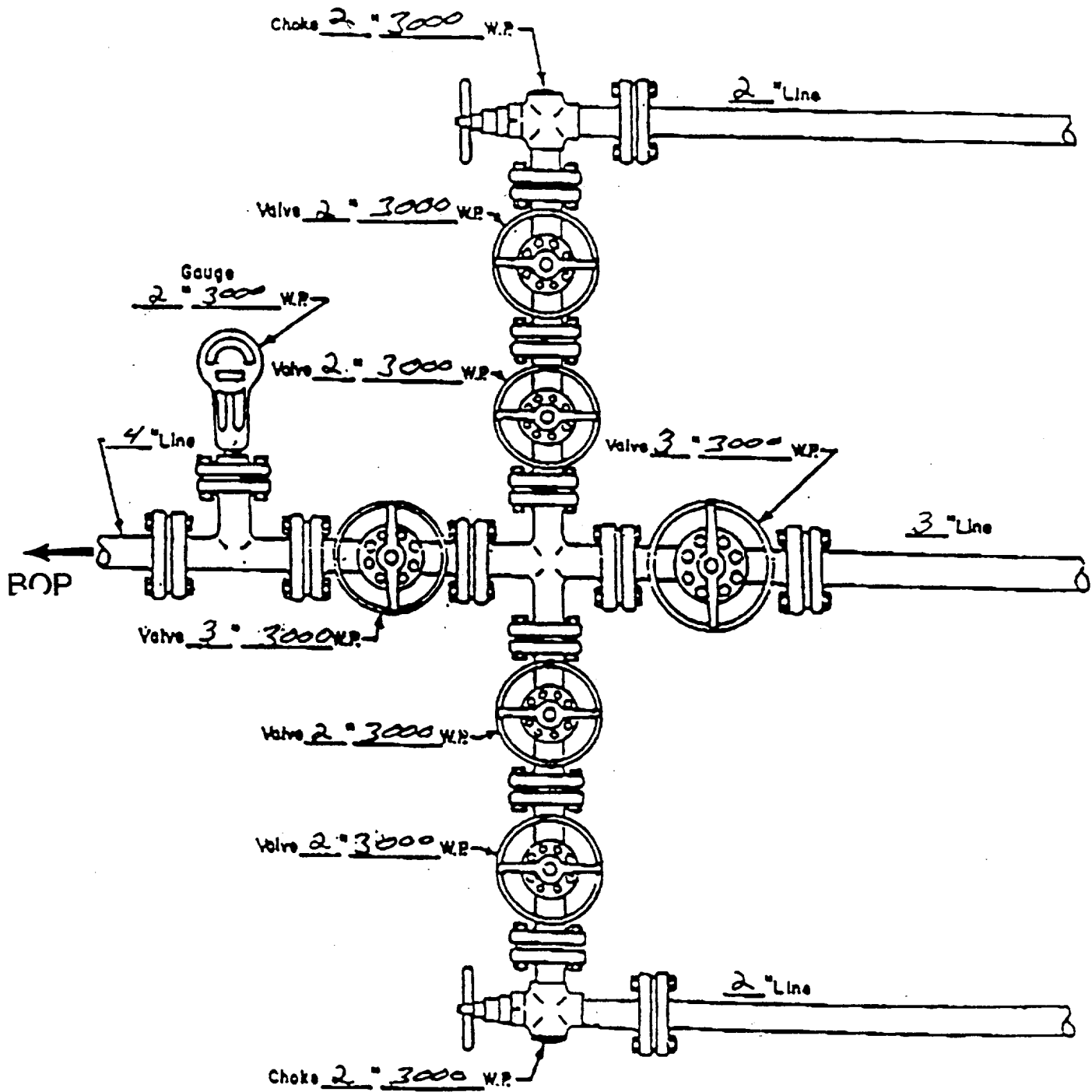
Tail 550 sacks Class C Mixed at 14.8 ppg
Additives 1.1% FL-62 + 1% BA-58 + 5% Salt + 0.3% CD-32
+ 0.2% SMS

Free Water 0 % Fluid Loss 45 cc/30 min.

BOP SPECIFICATIONS



CHOKE MANIFOLD DIAGRAM



MANIFOLD
3000 #W.P

- ☒ Manual
- ☐ Hydraulic