

District I
P.O. Box 1980, Hobbs, NM 88241-1980
District II
P.O. Drawer DD, Artesia, NM 88211-0719
District III
1000 Rio Brazos Rd., Aztec, NM 87410
District IV
P.O. Box 2088, Santa Fe, NM 87504-2088

State of New Mexico
Energy, Minerals & Natural Resources Department

OIL CONSERVATION DIVISION
PO Box 2088
Santa Fe, NM 87504-2088

Form C-101
Revised February 10, 1994

Instructions on back
Submit to Appropriate District Office
State Lease - 6 Copies
Fee Lease - 5 Copies

☐ AMENDED REPORT

APPLICATION FOR PERMIT TO DRILL, RE-ENTER, DEEPEN, PLUGBACK, OR ADD A ZONE

Operator Name and Address. Conoco Inc 10 Desta Dr. Ste. 430E Midland, Tx. 79705-4500		O GRID No. 005073
		API Number 30 - 025 - 34308
Property Code 22103	Property Name State A-3	Well No. 4

Surface Location

UL or lot no.	Section	Township	Range	Lot Idn	Feet from the	North/South line	Feet from the	East/West line	County
J	3	20S	37E		2310	South	2310	East	Lea

Proposed Bottom Hole Location If Different From Surface

UL or lot no	Section	Township	Range	Lot Idn	Feet from the	North/South line	Feet from the	East/West line	County
Proposed Pool 1 Skaggs Drinkard					Proposed Pool 2				

Work Type Code N 16 Multiple No	Well Type Code O 17 Proposed Depth 7150'	Cable/Rotary R 18 Formation Drinkard	Lease type Code S 19 Contractor Capstar Drlg.	14 Ground Level Elevation 3559' 20 Spud Date 3/1/98
--	---	---	--	--

Proposed Casing and Cement Program

Hole Size	Casing Size	Casing weight/foot	Setting Depth	Sacks of Cement	Estimated TOC
12-1/4"	8-5/8", M-50	23#	1250'	515 sx. circ.	Surface
7-7/8"	5-1/2", K-55	17#	7150'	1665 sx. circ.	Surface

Describe the proposed program. If this application is to DEEPEN or PLUG BACK give the data on the present productive zone and proposed new productive zone. Describe the blowout prevention program, if any. Use additional sheets if necessary.

It is proposed to drill a vertical wellbore through the Drinkard formation. The well will be drilled and equipped according to the following additional attachments:

1. Well Location & Acreage Dedication Plat (C-102)
2. Proposed Well Plan Outline
3. Cementing program
4. BOP/Choke diagram

Permit Expires 1 Year From Approval
Date Unless Drilling Underway

I hereby certify that the information given above is true and complete to the best of my knowledge and belief. Signature: <i>Jo Ann Johnson</i>		OIL CONSERVATION DIVISION	
Printed name: Jo Ann Johnson		Approved by: ORIGINAL SIGNED BY CHRIS WILLIAMS	
Title: Property Analyst		Title: DISTRICT SUPERVISOR	
Date: 2/18/98	Phone: 915/686-5515	Approval Date: FEB 19 1998	Expiration Date:
		Conditions of Approval: Attached	

District I
PO Box 1960, Hobbs, NM 88241-1980
District II
PO Drawer DD, Artesia, NM 88211-0719
District III
1000 Rio Brazos Rd., Aztec, NM 87410
District IV
PO Box 2068, Santa Fe, NM 87504-2088

State of New Mexico
Energy, Minerals & Natural Resources Department

OIL CONSERVATION DIVISION
PO Box 2088
Santa Fe, NM 87504-2088

Form C-102

Revised February 21, 1994

Instructions on back

Submit to Appropriate District Office

State Lease - 4 Copies

Fee Lease - 3 Copies

☐ AMENDED REPORT

WELL LOCATION AND ACREAGE DEDICATION PLAT

¹ API Number 30-125-34318	² Pool Code 57000	³ Pool Name Skaggs Drinkard
⁴ Property Code 22103	⁵ Property Name STATE A-3	⁶ Well Number 4
⁷ GRID No. 005073	⁸ Operator Name CONOCO INC.	⁹ Elevation 3559'

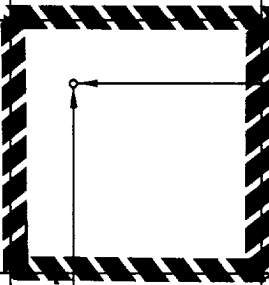
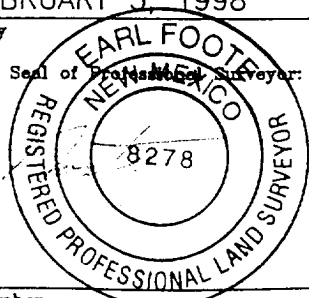
¹⁰Surface Location

UL or lot no.	Section	Township	Range	Lot Idn	Feet from the	North/South line	Feet from the	East/West line	County
J	3	20-S	37-E		2310	SOUTH	2310	EAST	LEA

¹¹Bottom Hole Location If Different From Surface

UL or lot no.	Section	Township	Range	Lot Idn	Feet from the	North/South line	Feet from the	East/West line	County
¹² Dedicated Acres 40	¹³ Joint or Infill	¹⁴ Consolidation Code	¹⁵ Order No.						

NO ALLOWABLE WILL BE ASSIGNED TO THIS COMPLETION UNTIL ALL INTERESTS HAVE BEEN CONSOLIDATED
OR A NON-STANDARD UNIT HAS BEEN APPROVED BY THE DIVISION

16					<p>LAT.=32°36'05" LONG.=103°14'17"</p> 	<p>¹⁷ OPERATOR CERTIFICATION I hereby certify that the information contained herein is true and complete to the best of my knowledge and belief.</p> <p><i>Jo Ann Johnson</i> Signature Jo Ann Johnson Printed Name Property Analyst Title 2/18/98 Date</p>
						<p>¹⁸ SURVEYOR CERTIFICATION I hereby certify that the well location shown on this plat was plotted from field notes of actual surveys made by me or under my supervision, and that the same is true and correct to best of my belief.</p> <p>FEBRUARY 5, 1998 Date of Survey Signature and Seal of Professional Surveyor:  Certificate Number 8278</p>

PROPOSED WELL PLAN OUTLINE

WELL NAME
LOCATION

STATE A-3 #4
2310 FEL & 2310' FSL, SEC. 3, T-20S, R-37E, LEA CO.

Ground Level :
Kelly Bushing:

Depth MD	FORMATION TOPS	DRILLING PROBLEMS	TYPE OF FORMATION EVALUATION	HOLE SIZE	CASING PROGRAM	FRAC GRAD	FORM. PRES. GRAD.	Mud Weight & Type	Days
0		Possible Hole Enlargement & Sloughing		12-1/4"			Normal	8.4 - 9.5 Fresh	
1000					8-5/8", 23#, M-50 ST&C @ 1250'				
	RUSTLER 1305' TOP SALDO SALT 1395'	Washouts in Salt Section			515 sx, circ.			10 Brine	3
2000									
	BS SALDO SALT 2542' YATES 2634'				Top 2nd Stage Tail at 2600'				
	7 RIVERS 2896'								
3000				7-7/8"					
	QUEEN 3426' PENROSE 3536'								
	G-BURG 3744'		H2S Monitor on at 3600'						
4000					DV Tool @ 4000'		< 8.3 ppg		
	SAN ANDRES 4128'								7
		State A-2A # 7 lost 700 bbls 10 ppg brine at 4576 - 4650' Cured with LCM & mud up							
5000									
	GLORIETA 5192'								
	BLINEBRY 5896'				Top 1st Stage Tail at 5700'				
6000									
	TUBB 6380'								
	DRINKARD 6645'		Muddloggers on at 6650'						
7000			GR-CAL-DLL-MLL and FDC-CNL-PE-Spect GR 2600'-TD. Pull GR-CAL to surface casing. Only run SG across Drinkard, Blinebry & Tubb		5-1/2", 17#, K-55 LT&C @ 7150' 1665 sx, circ.		< 8.3 ppg BHP = 2750 psi	10 ppg Starch Gel	17
	TD @ 7150'								

DATE

18-Feb-98

APPROVED

Jim Tietema, Drilling Engineer

Karie Bundy, Reservoir Engineer

Well Name : State A-3 #4

Location : 1980' FEL & 2310' FSL Sec 3, T-20S, R-37E, Lea County, New Mexico

Casing Program :

Surface 8 5/8" casing in 12 1/4" Hole at 1250 ft.

Production 5 1/2" casing in 7 7/8" Hole at 7150 ft.

Cementing Program :

Surface

Lead 315 sacks Class C Mixed at 12.7 ppg
Additives 35:65:6 (Poz:Cem:Gel) + 2% CACL2
+ 0.25 pps Cello-Flake

Tail 200 sacks Class C Mixed at 14.8 ppg
Additives 2% A-7P

Production

1ST Stage

Lead 220 sacks Class C Mixed at 12 ppg
Additives 16% Gel + 0.4% CD-32 + 0.2% SMS

Tail 375 sacks Class C Mixed at 14.8 ppg
Additives 1.1% FL-62 + 1% BA-58 + 3% Salt + 0.3% CD-32
+ 0.2% SMS

Free Water 0 % Fluid Loss 45 cc/30 min.

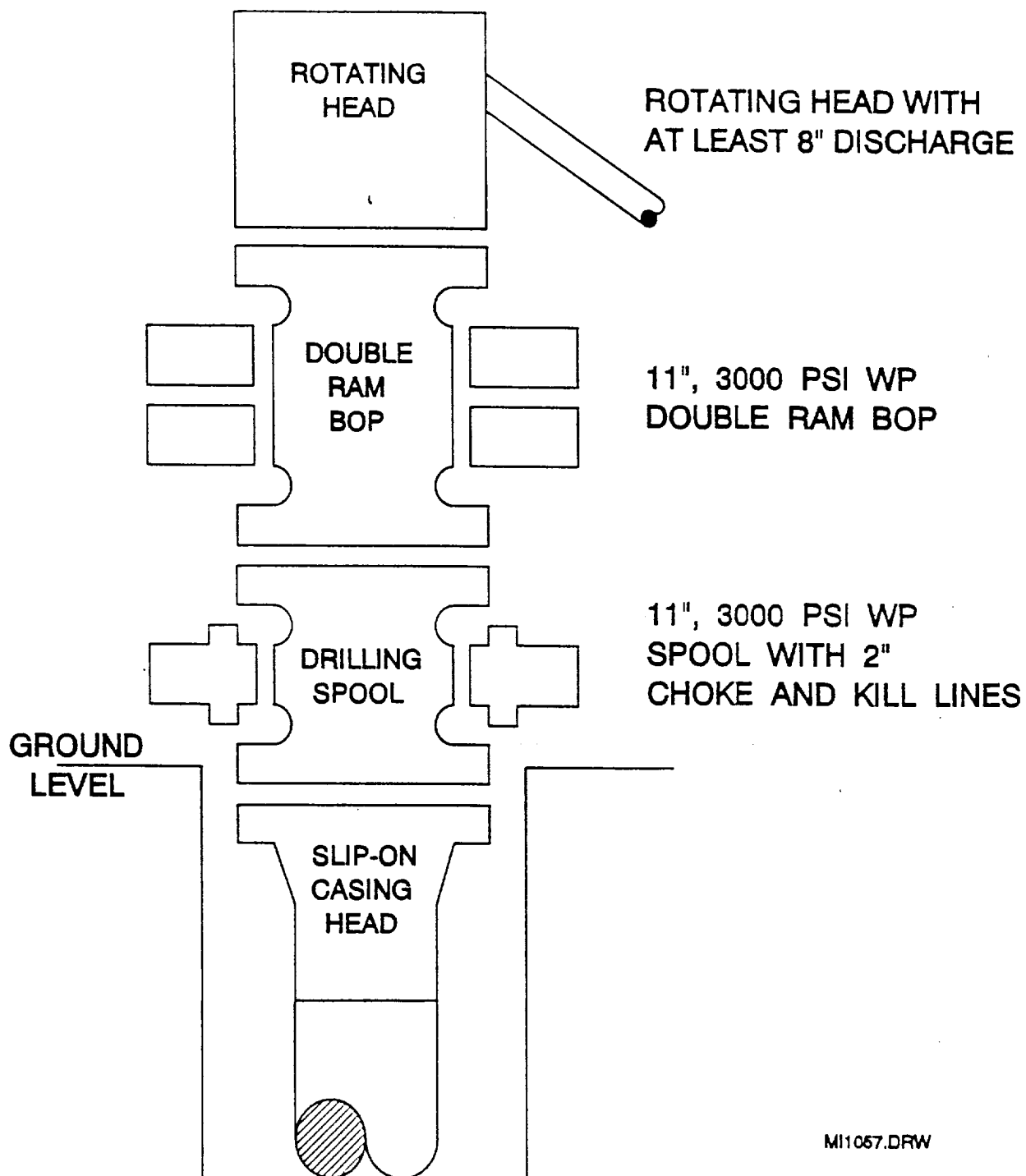
2nd Stage

Lead 495 sacks Class C Mixed at 12 ppg
Additives 16% Gel + 0.4% CD-32 + 0.2% SMS

Tail 575 sacks Class C Mixed at 14.8 ppg
Additives 1.1% FL-62 + 1% BA-58 + 5% Salt + 0.3% CD-32
+ 0.2% SMS

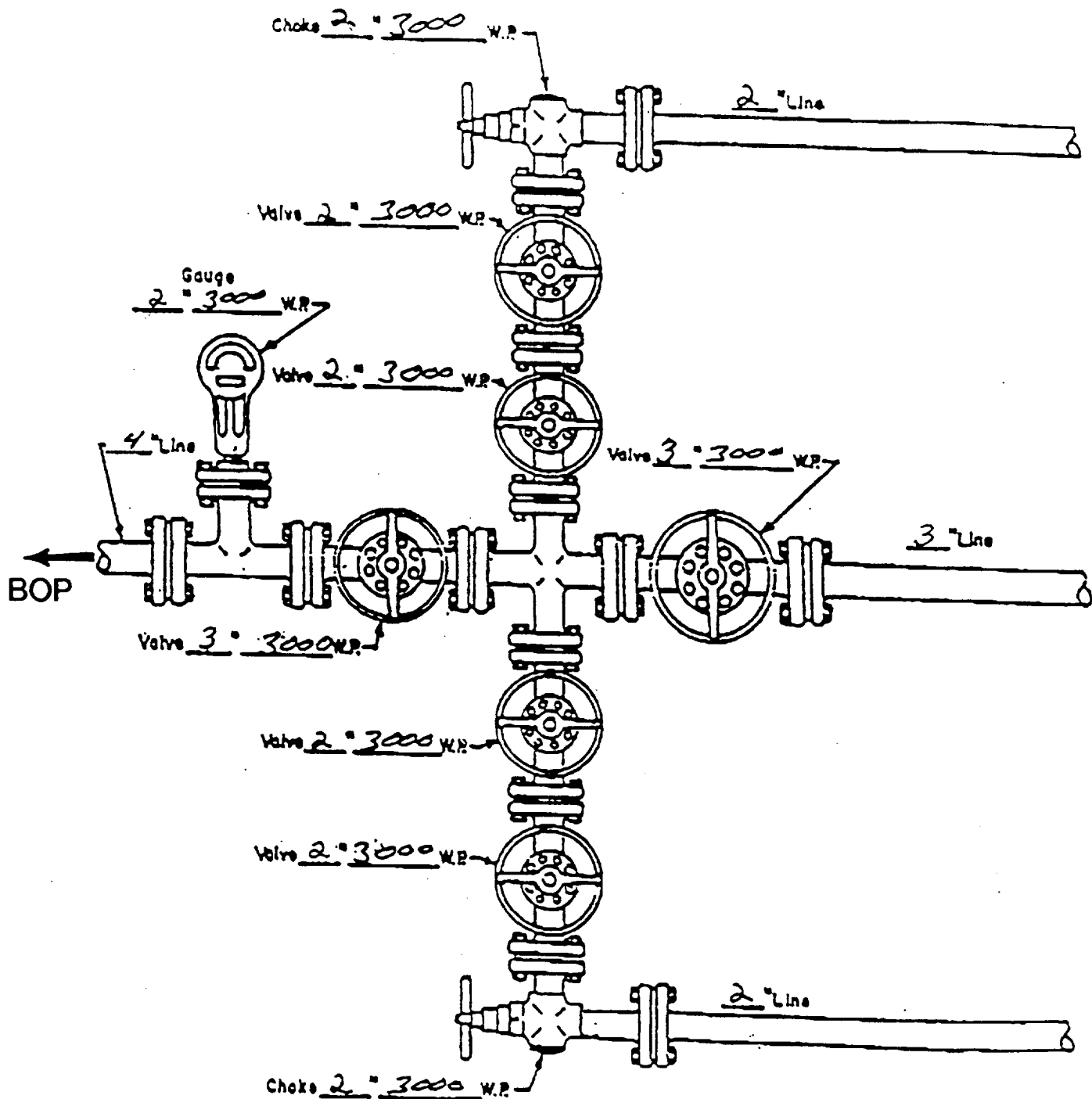
Free Water 0 % Fluid Loss 45 cc/30 min.

BOP SPECIFICATIONS



MI1057.DRW

CHOKE MANIFOLD DIAGRAM



MANIFOLD
3000 W.P.

- ☒ Manual
- ☐ Hydraulic