

District I  
1625 N. French Dr., Hobbs, NM 88240  
District II  
811 S. 1st Street, Artesia, NM 88210  
District III  
1000 Rio Brazos Rd., Aztec, NM 87410  
District IV  
2040 South Pacheco, Santa Fe, NM 87505

State of New Mexico  
Energy, Minerals & Natural Resources

Form C-101  
Revised March 17, 1999

Oil Conservation Division  
2040 South Pacheco  
Santa Fe, NM 87505

Submit to appropriate District Office  
State Lease - 6 Copies  
Fee Lease - 5 Copies

☐ AMENDED REPORT

APPLICATION FOR PERMIT TO DRILL, RE-ENTER, DEEPEN, PLUGBACK, OR ADD A ZONE

<sup>1</sup> Operator Name and Address <b>Chevron U.S.A. Inc.</b> <b>P.O. Box 1150</b>		<sup>2</sup> OGRID Number <b>4323</b>
		<sup>3</sup> API Number <b>30- 30-025-34785</b>
<sup>4</sup> Property Code <b>20069</b>	<sup>5</sup> Property Name <b>MONUMENT 13 STATE</b>	<sup>6</sup> Well No. <b>29</b>

<sup>7</sup> Surface Location									
UL or lot no.	Section	Township	Range	Lot. Idn	Feet from the	North/South Line	Feet from the	East/West line	County
<b>L</b>	<b>13</b>	<b>19S</b>	<b>36E</b>		<b>1650</b>	<b>SOUTH</b>	<b>990</b>	<b>WEST</b>	<b>LEA</b>

<sup>8</sup> Proposed Bottom Hole Location If Different From Surface									
UL or lot no.	Section	Township	Range	Lot. Idn	Feet from the	North/South Line	Feet from the	East/West line	County
<sup>9</sup> Proposed Pool 1 <b>MONUMENT, ABO, NORTH</b>					<sup>10</sup> Proposed Pool 2 <b>46980</b>				

<sup>11</sup> Work Type Code <b>D</b>	<sup>12</sup> Well Type Code <b>O</b>	<sup>13</sup> Cable/Rotary	<sup>14</sup> Lease Type Code <b>S</b>	<sup>15</sup> Ground Level Elevation <b>3716'</b>
<sup>16</sup> Multiple	<sup>17</sup> Proposed Depth <b>7500'</b>	<sup>18</sup> Formation <b>ABO</b>	<sup>19</sup> Contractor	<sup>20</sup> Spud Date

<sup>21</sup> Proposed Casing and Cement Program					
Hole Size	Casing Size	Casing weight/foot	Setting Depth	Sacks of Cement	Estimated TOC
<b>NO NEW CASING</b>					

<sup>22</sup> Describe the proposed program. If this application is to DEEPEN or PLUG BACK, give the data on the present productive zone and proposed new productive zone. Describe the blowout prevention program, if any. Use additional sheets if necessary.

CHEVRON PROPOSES TO:

DEEPEN WELL FROM 6769' TO 7500'. RUN LINER TO TOP OF ABO @ 7150'. COMPLETE OPEN HOLE.  
RETURN WELL TO PRODUCTION.

Permit Expires 1 Year From Approval  
Date Unless ~~Drilling~~ Underway  
**Deepen**

<sup>23</sup> I hereby certify that the information given above is true and complete to the best of my knowledge and belief.		<b>OIL CONSERVATION DIVISION</b>	
Signature: <i>J. K. Ripley</i>		Approved by: <i>[Signature]</i>	
Printed name: <b>J. K. RIPLEY</b>		Title: <b>REGULATORY O.A.</b>	
Date: <b>10/3/00</b>		Approval Date: <b>10/3/00</b> Expiration Date:	
Phone: <b>(915) 687-7148</b>		Conditions of Approval: Attached <input type="checkbox"/>	

DISTRICT I  
P.O. Box 1988, Hobbs, NM 88241-1988

DISTRICT II  
P.O. Drawer 88, Artesia, NM 88211-0718

DISTRICT III  
1988 Rio Grande Rd., Aztec, NM 87410

DISTRICT IV  
P.O. Box 2088, Santa Fe, N.M. 87504-2088

State of New Mexico  
Energy, Minerals and Natural Resources Department

Form C-102  
Revised February 10, 1994  
Submit to Appropriate District Office  
State Lease - 4 Copies  
Fee Lease - 3 Copies

OIL CONSERVATION DIVISION  
P.O. Box 2088  
Santa Fe, New Mexico 87504-2088

☐ AMENDED REPORT

WELL LOCATION AND ACREAGE DEDICATION PLAT

API Number 30-025-34785	Pool Code 46980	Pool Name MONUMENT; ABO, NORTH
Property Code 20069	Property Name MONUMENT "13" STATE	Well Number 29
OGED No. 4323	Operator Name CHEVRON U.S.A. PRODUCTION COMPANY	Elevation 3716

Surface Location

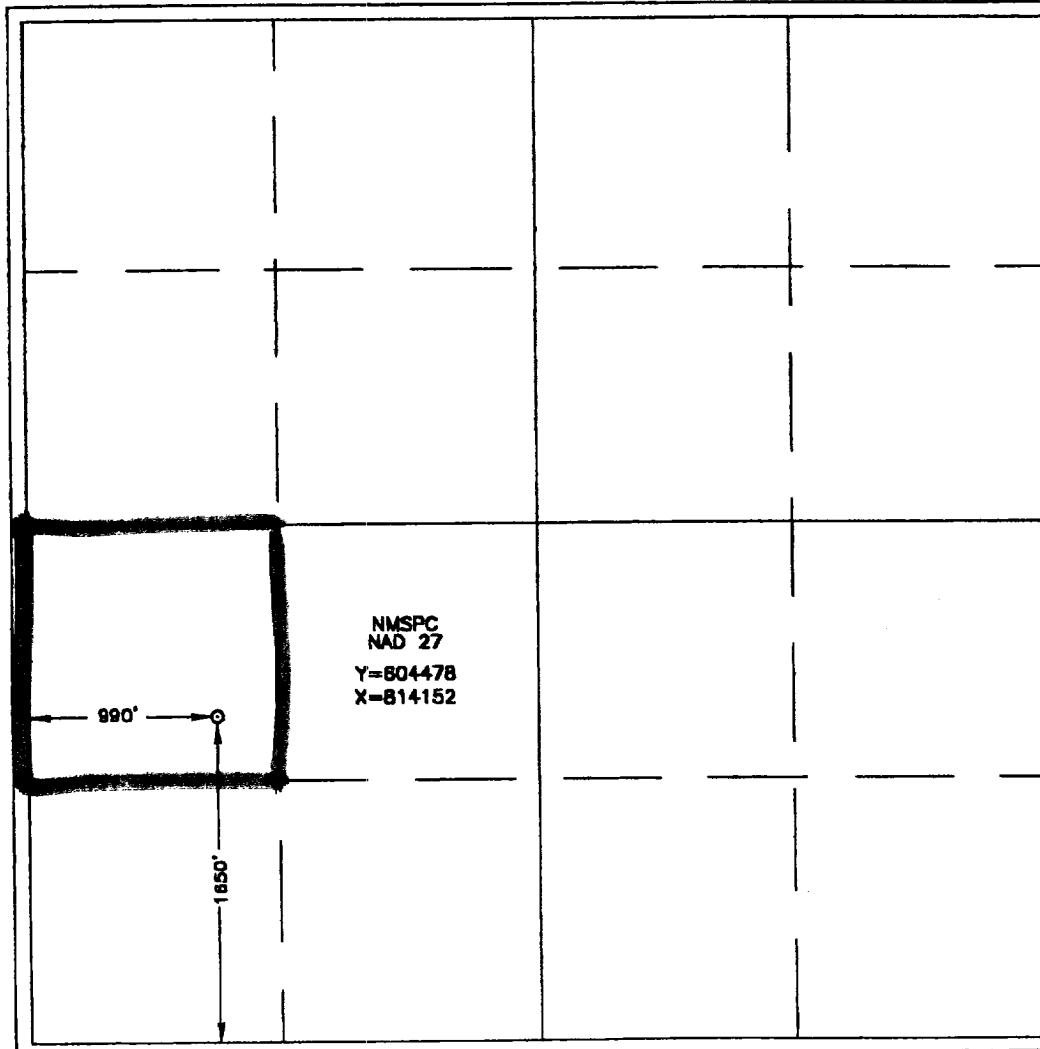
UL or lot No. L	Section 13	Township 19 S	Range 36 E	Lot Idn	Feet from the 1650	North/South Line SOUTH	Feet from the 990	East/West Line WEST	County LEA
--------------------	---------------	------------------	---------------	---------	-----------------------	---------------------------	----------------------	------------------------	---------------

Bottom Hole Location If Different From Surface

UL or lot No.	Section	Township	Range	Lot Idn	Feet from the	North/South Line	Feet from the	East/West Line	County
---------------	---------	----------	-------	---------	---------------	------------------	---------------	----------------	--------

Dedicated Acres 40	Joint or Infill	Consolidation Code	Order No.
-----------------------	-----------------	--------------------	-----------

NO ALLOWABLE WILL BE ASSIGNED TO THIS COMPLETION UNTIL ALL INTERESTS HAVE BEEN CONSOLIDATED  
OR A NON-STANDARD UNIT HAS BEEN APPROVED BY THE DIVISION



OPERATOR CERTIFICATION

I hereby certify the information contained herein is true and complete to the best of my knowledge and belief.

*J. K. Ripley*  
Signature

J. K. RIPLEY

Printed Name

REGULATORY O.A.

Title

10/3/00

Date

SURVEYOR CERTIFICATION

I hereby certify that the well location shown on this plat was plotted from field notes of actual surveys made by me or under my supervision, and that the same is true and correct to the best of my belief.

DECEMBER 13, 1999

Date Surveyed LMP

Signature *G. E. Edson*  
Professional Surveyor

*G. E. Edson*  
NEW MEXICO  
12/13/99  
99-1-1A

Certificate No. RONALD E. EDSON 3239  
GARY E. EDSON 12641  
PROFESSIONAL SURVEYOR McDONALD 12185