

State of New Mexico  
Energy, Minerals & Natural Resources

Form C-101  
Revised March 17, 1999

District I  
1625 N. French Dr., Hobbs, NM 88240  
District II  
811 S. 1st Street, Artesia, NM 88210  
District III  
1000 Rio Brazos Rd., Aztec, NM 87410  
District IV  
2040 South Pacheco, Santa Fe, NM 87505

Oil Conservation Division  
2040 South Pacheco  
Santa Fe, NM 87505

Submit to appropriate District Office  
State Lease - 6 Copies  
Fee Lease - 5 Copies

☐ AMENDED REPORT

**APPLICATION FOR PERMIT TO DRILL, RE-ENTER, DEEPEN, PLUGBACK, OR ADD A ZONE**

|   |  |   |
|---|--|---|
| <sup>1</sup> Operator Name and Address<br><b>Amerada Hess Corporation</b><br><b>P.O. Box 2040</b><br><b>HOUSTON, TEXAS 77252-2040</b> |  | <sup>2</sup> OGRID Number<br><b>000495</b>  |
| <sup>4</sup> Property Code<br><b>000135</b>   | <sup>5</sup> Property Name<br><b>NORTH MONUMENT GRAYBURG SAN ANDRES UNIT BLK 16, NO 26</b> | <sup>3</sup> API Number<br><b>30-025-35620</b><br><sup>6</sup> Well No.<br><b>324</b> |

| <sup>7</sup> Surface Location |           |             |             |          |               |                  |               |                |            |
|-------------------------------|-----------|-------------|-------------|----------|---------------|------------------|---------------|----------------|------------|
| UL or lot no.                 | Section   | Township    | Range       | Lot. Idn | Feet from the | North/South Line | Feet from the | East/West line | County     |
| <b>F</b>                      | <b>32</b> | <b>19 S</b> | <b>37 E</b> |          | <b>2620</b>   | <b>NORTH</b>     | <b>2525</b>   | <b>WEST</b>    | <b>LEA</b> |

| <sup>8</sup> Proposed Bottom Hole Location If Different From Surface       |         |          |       |          |                               |                  |               |                |        |
|--|---------|----------|-------|----------|-------------------------------|------------------|---------------|----------------|--------|
| UL or lot no.  | Section | Township | Range | Lot. Idn | Feet from the                 | North/South Line | Feet from the | East/West line | County |
|  |         |          |       |          |                               |                  |               |                |        |
| <sup>9</sup> Proposed Pool 1<br><b>EUNICE-MONUMENT/GRAYBURG-SAN ANDRES</b> |         |          |       |          | <sup>10</sup> Proposed Pool 2 |                  |               |                |        |

|  |  |  |  |  |
|--|--|--|--|--|
| <sup>11</sup> Work Type Code<br><b>N</b> | <sup>12</sup> Well Type Code<br><b>O</b>     | <sup>13</sup> Cable/Rotary<br><b>R</b>               | <sup>14</sup> Lease Type Code<br><b>ES</b>   | <sup>15</sup> Ground Level Elevation<br><b>3577'</b> |
| <sup>16</sup> Multiple<br><b>NO</b>      | <sup>17</sup> Proposed Depth<br><b>4000'</b> | <sup>18</sup> Formation<br><b>GRAYBURG-S. ANDRES</b> | <sup>19</sup> Contractor<br><b>PATTERSON</b> | <sup>20</sup> Spud Date<br><b>07/19/01</b>           |

| <sup>21</sup> Proposed Casing and Cement Program |               |                    |               |                 |                |
|--|---------------|--------------------|---------------|-----------------|----------------|
| Hole Size  | Casing Size   | Casing weight/foot | Setting Depth | Sacks of Cement | Estimated TOC  |
| <b>11"</b>                                       | <b>8-5/8"</b> | <b>24#</b>         | <b>1200'</b>  | <b>475</b>      | <b>SURFACE</b> |
| <b>7-7/8"</b>                                    | <b>5-1/2"</b> | <b>15.5#</b>       | <b>4000'</b>  | <b>750</b>      | <b>SURFACE</b> |
|  |               |                    |               |                 |                |
|  |               |                    |               |                 |                |
|  |               |                    |               |                 |                |

<sup>22</sup> Describe the proposed program. If this application is to DEEPEN or PLUG BACK, give the data on the present productive zone and proposed new productive zone. Describe the blowout prevention program, if any. Use additional sheets if necessary.

1. **DRILL AN 11" HOLE TO 1200' AND SET 1200' OF 24# 8-5/8" SURFACE CASING. CEMENT WITH 475 SK OF 65/35 POZ AND CIRCULATE TO SURFACE.**

2. **DRILL AN 7-7/8" HOLE TO 4000' AND SET 4000' OF 15.5# 5-1/2" PRODUCTION CASING. CEMENT WITH 750 SK OF CLASS "C" AND CIRCULATE TO SURFACE.**

Permit Expires 1 Year From Approval  
Date Unless Drilling Underway

|  |                            |  |                  |
|--|----------------------------|--|------------------|
| <sup>23</sup> I hereby certify that the information given above is true and complete to the best of my knowledge and belief. |                            | OIL CONSERVATION DIVISION                                    |                  |
| Signature: <i>Ann Williams</i>   |                            |  |                  |
| Printed name: <b>ANN WILLIAMS</b>  |                            | Approved by: <i>Chris...</i>                                 |                  |
| Title: <b>SR. STAFF ASSOCIATE</b>  |                            | Title:   |                  |
| Date: <b>06/14/01</b>  | Phone: <b>713-609-4838</b> | Approval Date: <i>6/14/01</i>                                | Expiration Date: |
|  |                            | Conditions of Approval:<br>Attached <input type="checkbox"/> |                  |

*MP*

**DISTRICT IV**  
**2040 South Pacheco, Santa Fe, NM 87505**

Form C-102  
Revised March 17, 1999

**Submit to Appropriate District Office**  
**State Lease - 4 Copies**  
**Fee Lease - 3 Copies**

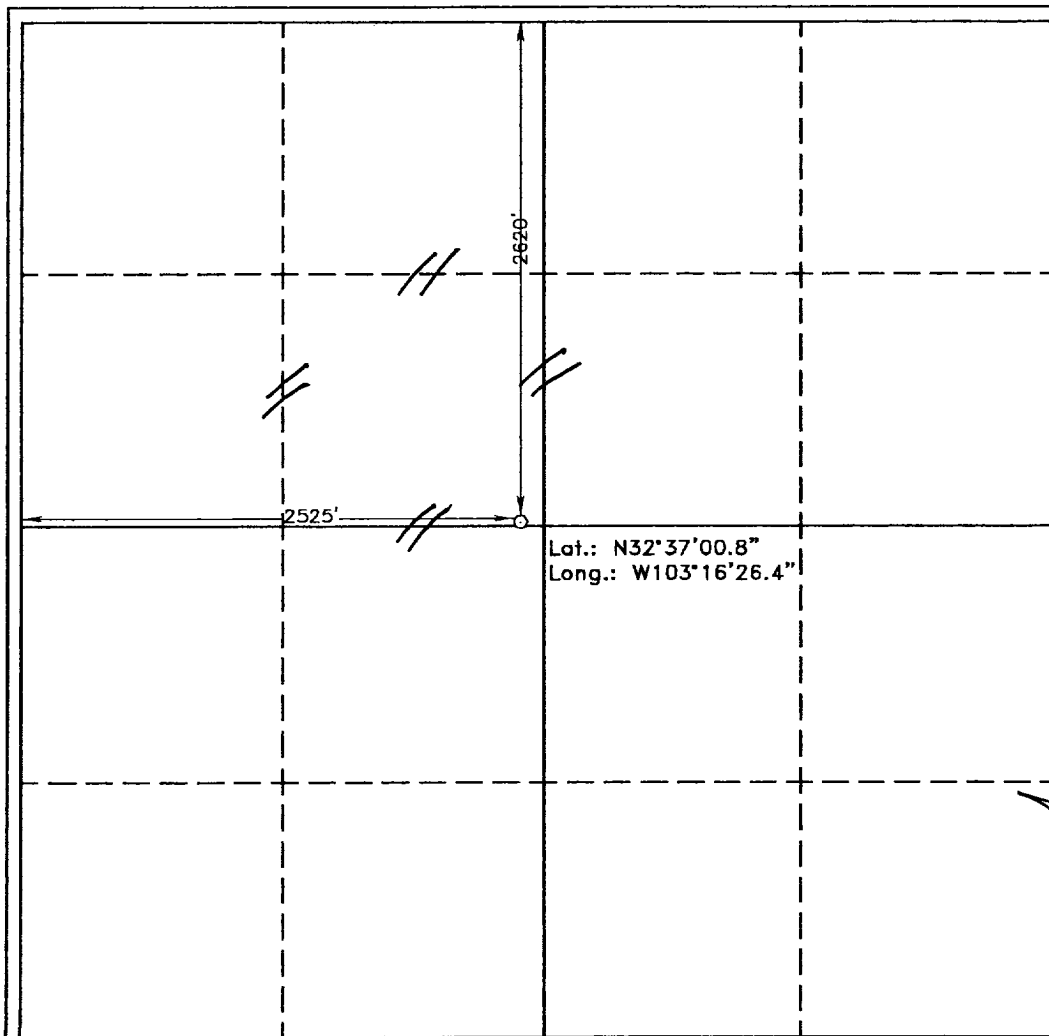
2040 South Pacheco  
Santa Fe, New Mexico 87504-2088

☐ AMENDED REPORT

|                             |   |                    |  |
|-----------------------------|---|--------------------|--|
| API Number<br>30-025-3562.0 |   | Pool Code<br>23000 | Pool Name<br>EUNICE-MONUMENT/GRAYBURG-SAN ANDRES |
| Property Code<br>000135     | Property Name<br>NMGSAU BLK 16, NO 26     |                    | Well Number<br>324                               |
| OGRID No.<br>000495         | Operator Name<br>AMERADA HESS CORPORATION |                    | Elevation<br>3577'                               |

|               |         |          |       |         |               |                  |               |                |        |
|---------------|---------|----------|-------|---------|---------------|------------------|---------------|----------------|--------|
| UL or lot No. | Section | Township | Range | Lot Idn | Feet from the | North/South line | Feet from the | East/West line | County |
| F             | 32      | 19 S     | 37 E  |         | 2620          | NORTH            | 2525          | WEST           | LEA    |

|                 |                 |                    |  |         |               |                  |               |                |        |
|-----------------|-----------------|--------------------|--|---------|---------------|------------------|---------------|----------------|--------|
| UL or lot No.   | Section         | Township           | Range  | Lot Idn | Feet from the | North/South line | Feet from the | East/West line | County |
| Dedicated Acres | Joint or Infill | Consolidation Code | Order No.                                    |         |               |                  |               |                |        |
| 40              | Y               | U                  | UNITIZATION ORDER #R-1994 / WF ORDER #R-9596 |         |               |                  |               |                |        |



I hereby certify the the information  
contained herein is true and complete to the  
best of my knowledge and belief.

Signature Ann Williams

ANN WILLIAMS  
Printed Name

SR. STAFF ASSOCIATE  
Title

06/28/01  
Date

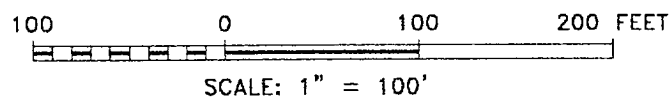
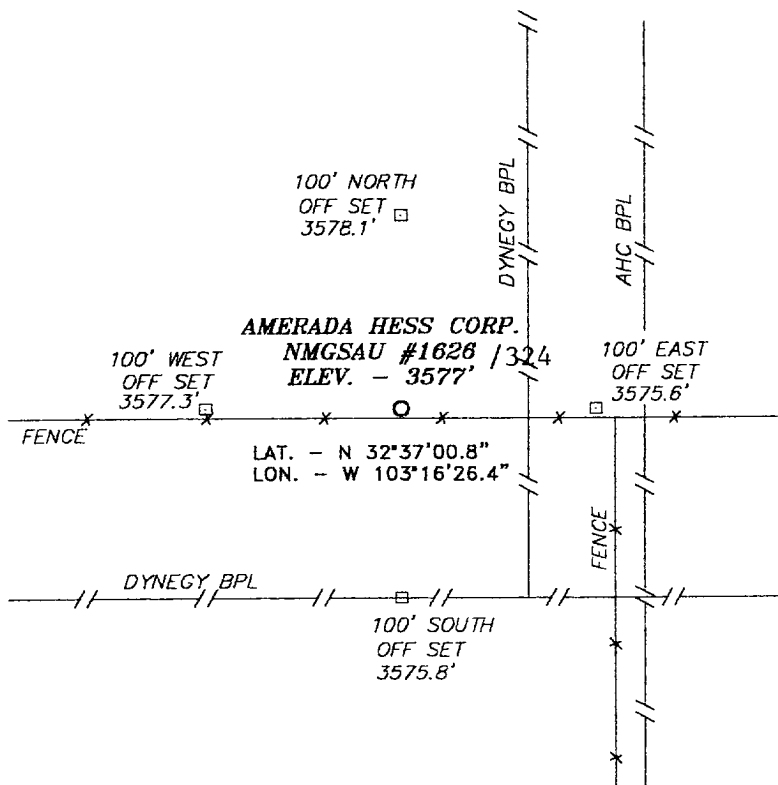
I hereby certify that the well location shown on this plat was plotted from field notes of actual surveys made by me or under my supervision, and that the same is true and correct to the best of my belief.

**JUNE 1, 2001**

Date Surveyed \_\_\_\_\_  
Signature & Seal of \_\_\_\_\_  
Professional Surveyor \_\_\_\_\_

NEW YORK  
7977  
REGISTERED  
W.O. No. 126A  
SURVYOR  
Certificate No. 6094  
PROFESSIONAL  
DAN SURVEYS

**SECTION 32, TOWNSHIP 19 SOUTH, RANGE 37 EAST, N.M.P.M.,  
LEA COUNTY, NEW MEXICO.**



**AMERADA HESS CORPORATION**

REF: NMGSAU #1626 / Well Pad Topo

NMGSAU #1626 LOCATED 2620' FROM THE  
NORTH LINE AND 2525' FROM THE WEST LINE OF  
SECTION 32, TOWNSHIP 19 SOUTH, RANGE 37 EAST,  
N.M.P.M., LEA COUNTY, NEW MEXICO.

**BASIN SURVEYS** P.O. BOX 1786 - HOBBS, NEW MEXICO

W.O. Number: 1264

Drawn By: K. GOAD

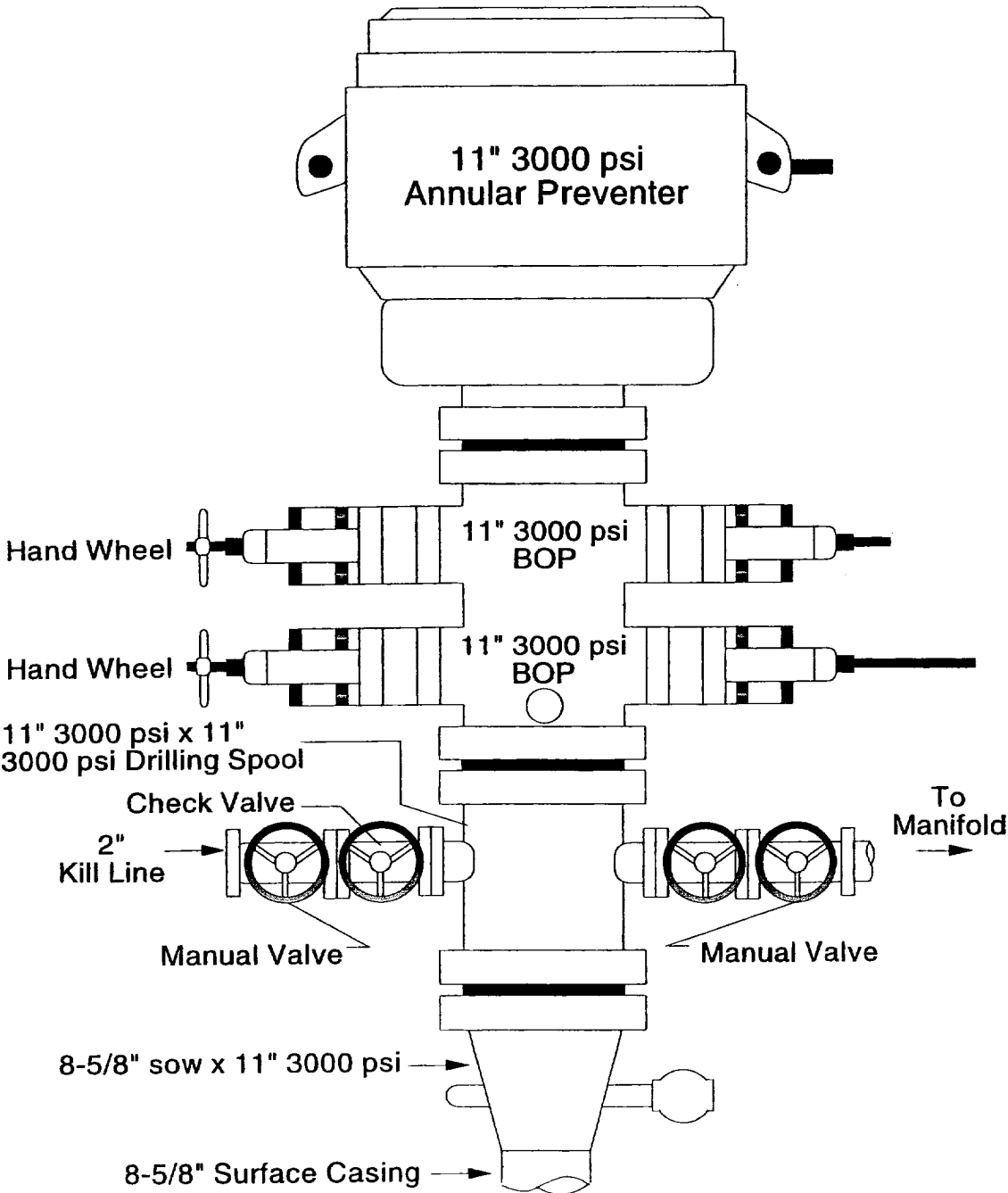
Date: 06-12-2001

Disk: KJG CD#5 - 1264A.DWG

Survey Date: 06-01-2001

Sheet 1 of 1 Sheets

**3000# B.O.P. STACK**



ABOVE DATE DOES NOT  
INDICATE WHEN  
CONFIDENTIAL LOGS  
WILL BE RELEASED

ELF 9/22/01