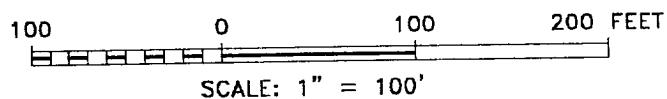
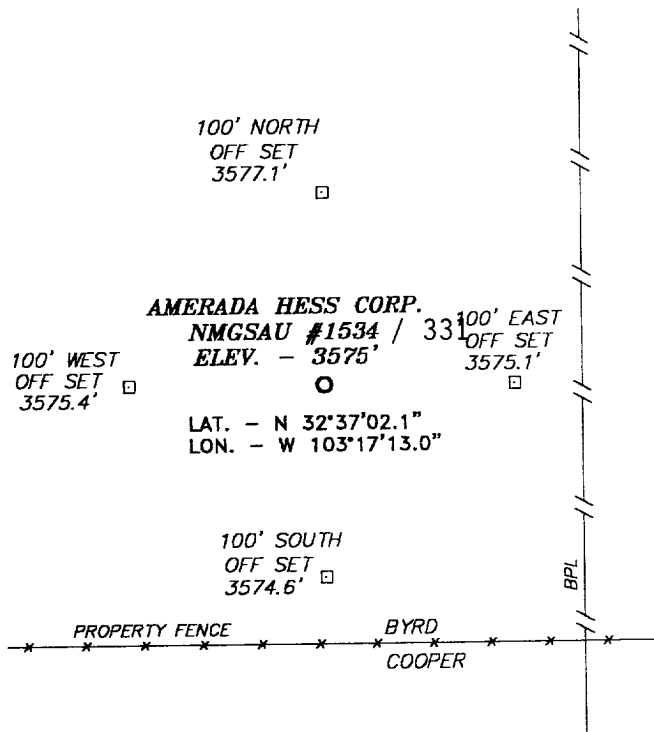


SECTION 31, TOWNSHIP 19 SOUTH, RANGE 37 EAST, N.M.P.M.,
LEA COUNTY, NEW MEXICO.



AMERADA HESS CORPORATION

REF: NMGSAU #1534 / Well Pad Topo

NMGSAU #1534 LOCATED 2500' FROM THE
NORTH LINE AND 1460' FROM THE EAST LINE OF
SECTION 31, TOWNSHIP 19 SOUTH, RANGE 37 EAST,
N.M.P.M., LEA COUNTY, NEW MEXICO.

BASIN SURVEYS P.O. BOX 1786 - HOBBS, NEW MEXICO

W.O. Number: 1961

Drawn By: **K. GOAD**

Date: 10-10-2001

Disk: KJG CD#5 - 1961A.DWG

Survey Date: 10-05-2001

Sheet 1 of 1 Sheets

ABOVE DATE DOES NOT
INDICATE WHEN
CONFIDENTIAL LOGS
WILL BE RELEASED

ELF

1/25/02