

DISTRICT I  
P.O. Box 1980, Hobbs, NM 88241-1980

State of New Mexico  
Energy, Minerals and Natural Resources Department

Form C-102  
Revised February 10, 1994  
Submit to Appropriate District Office  
State Lease - 4 Copies  
Fee Lease - 3 Copies

DISTRICT II  
P.O. Drawer DD, Artesia, NM 88211-0719

OIL CONSERVATION DIVISION

P.O. Box 2088  
Santa Fe, New Mexico 87504-2088

DISTRICT III  
1000 Rio Brazos Rd., Aztec, NM 87410

DISTRICT IV  
P.O. BOX 2088, SANTA FE, N.M. 87504-2088

WELL LOCATION AND ACREAGE DEDICATION PLAT

☐ AMENDED REPORT

API Number <b>30-025-35997</b>	Pool Code <b>76480</b>	Pool Name <b>Eumont (Y-SR-Q) Pro Gas</b>
Property Code <b>76480-30419</b>	Property Name <b>STATE V</b>	Well Number <b>1</b>
OGRID No. <b>013300</b>	Operator Name <b>LEWIS B. BURLESON INC.</b>	Elevation <b>3679'</b>

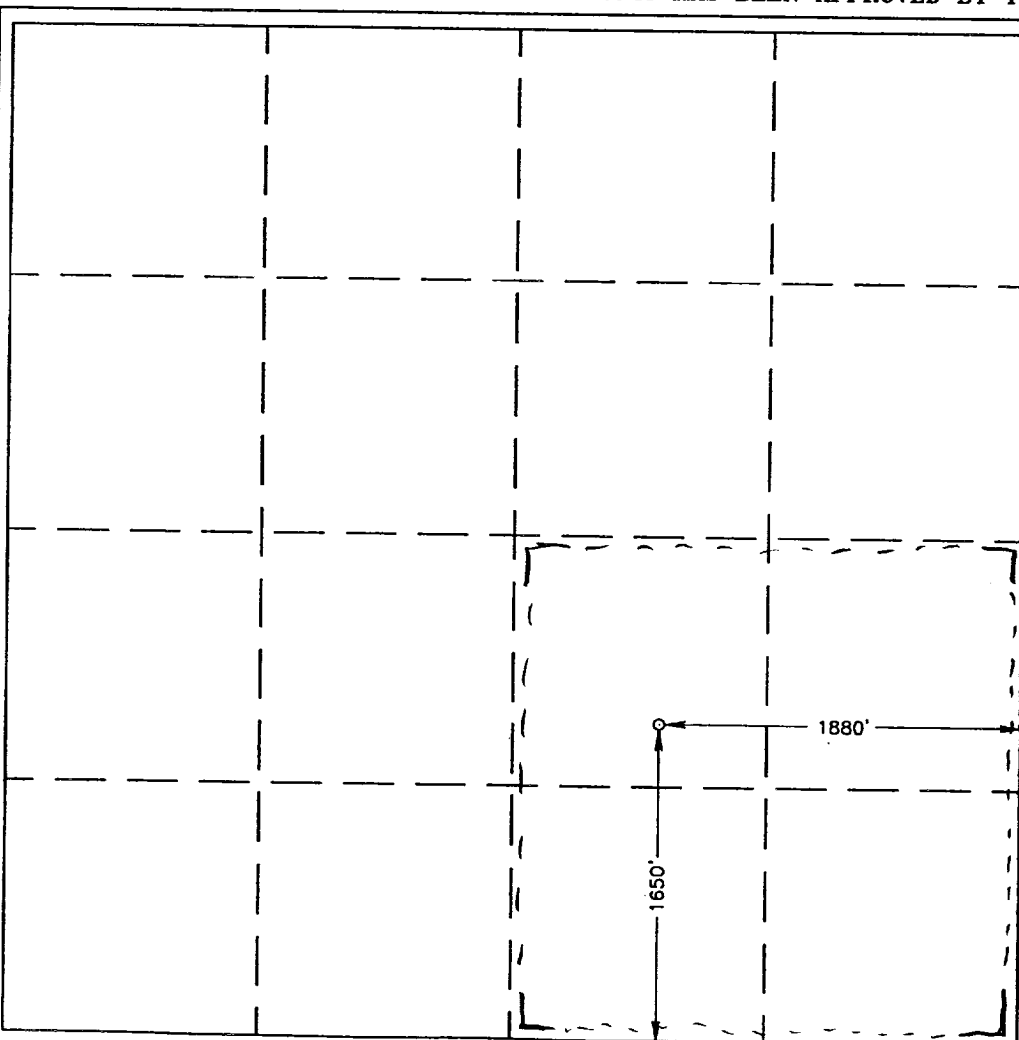
Surface Location

UL or lot No. <b>J</b>	Section <b>17</b>	Township <b>19-S</b>	Range <b>37-E</b>	Lot Idn	Feet from the <b>1650</b>	North/South line <b>SOUTH</b>	Feet from the <b>1880</b>	East/West line <b>EAST</b>	County <b>LEA</b>
---------------------------	----------------------	-------------------------	----------------------	---------	------------------------------	----------------------------------	------------------------------	-------------------------------	----------------------

Bottom Hole Location If Different From Surface

UL or lot No.	Section	Township	Range	Lot Idn	Feet from the	North/South line	Feet from the	East/West line	County
Dedicated Acres <b>160</b>	Joint or Infill	Consolidation Code	Order No.						

NO ALLOWABLE WILL BE ASSIGNED TO THIS COMPLETION UNTIL ALL INTERESTS HAVE BEEN CONSOLIDATED  
OR A NON-STANDARD UNIT HAS BEEN APPROVED BY THE DIVISION



OPERATOR CERTIFICATION

I hereby certify the the information  
contained herein is true and complete to the  
best of my knowledge and belief.

*[Signature]*

Signature

Steven L. Burleson

Printed Name

Vice-President

Title

8/19/2002

Date

SURVEYOR CERTIFICATION

I hereby certify that the well location shown  
on this plat was plotted from field notes of  
actual surveys made by me or under my  
supervision, and that the same is true and  
correct to the best of my belief.

AUGUST 13, 2002

Date Surveyed

Signature & Seal of  
Professional Surveyor

*[Signature]*  
3239  
02-11-0576

Certificate No. RONALD J. EIDSON 3239  
GARY EIDSON 12641