

District I
PO Box 1980, Hobbs, NM 88241-1980
District II
PO Drawer DD, Artesia, NM 88211-0719
District III
1000 Rio Brazos Rd., Aztec, NM 87410
District IV
PO Box 2088, Santa Fe, NM 87504-2088

State of New Mexico RECEIVED FEB 28 1994
Energy, Minerals & Natural Resources Department

Form C-101
Revised February 10, 1994
Instructions on back
Submit to Appropriate District Office
State Lease - 6 Copies
Fee Lease - 5 Copies

OIL CONSERVATION DIVISION
PO Box 2088
Santa Fe, NM 87504-2088

AMENDED REPORT

APPLICATION FOR PERMIT TO DRILL, RE-ENTER, DEEPEN, PLUGBACK, OR ADD A ZONE

Operator Name and Address: Xeric Oil & Gas Corporation P. O. Box 352 Midland, Texas 79702		OGRID Number 25482
		AFF Number 30-025-34187
Property Code 22052	Property Name Hall	Well No. 1

Surface Location

UL or lot no.	Section	Township	Range	Lot Idn	Feet from the	North/South Line	Feet from the	East/West Line	County
P	14	20S	38E		330	South	660	East	Lea

Proposed Bottom Hole Location If Different From Surface

UL or lot no.	Section	Township	Range	Lot Idn	Feet from the	North/South Line	Feet from the	East/West Line	County
Wildcat DK Abo					Proposed Pool 1				
					Blinebry Oil & Gas				

Work Type Code N	Well Type Code O	Cable/Rotary R	Lease Type Code F	Ground Level Elevation 3577
Multiple No	Proposed Depth 8000	Formation Abo	Contractor Cantex Drlg	Spud Date 1/15/98

Proposed Casing and Cement Program

Hole Size	Casing Size	Casing weight/foot	Setting Depth	Sacks of Cement	Estimated TOC
12 1/4"	8 5/8"	24#	1600'	800	surface
7 7/8"	5 1/2"	17#	8000'	900	est. 2900'

Describe the proposed program. If this application is to DEEPEN or PLUG BACK give the data on the present productive zone and proposed new productive zone. Describe the blowout prevention program, if any. Use additional sheets if necessary.

1. Drill 12 1/4" hole to approximately 1600' or hard formation w/ fresh water
2. Set 8 5/8" csg and cement w/ 600 sx "c" + 4% gel + 2% Cacl2 + 200 sx "c" + 2% Cacl2 - circulate cement to surface - WOC 12 hrs before drill out
3. Drill 7 7/8" hole with brine to 8000'. Run open hole logs
4. Set 5 1/2" casing. Cement w/ 555 sx "H" 35:65 + 6% gel + 5% salt + .25% cello-flake - tail w/ 345 sx "H" - TOC @ ± 2900' to cover Yates formation with cement

I hereby certify that the information given above is true and complete to the best of my knowledge and belief.

Signature: *Michael G. Mooney*
Printed name: Michael G. Mooney
Title: Consulting Engineer
Date: _____ Phone: _____

OIL CONSERVATION DIVISION	
Approved by: _____	
Title: _____	
Approval Date: _____	Expiration Date: _____
Conditions of Approval: _____	

Permit Expires 1 Year from Approval Date unless Casing Inventory

DISTRICT I
P.O. Box 1980, Hobbs, NM 88241-1980

State of New Mexico

Energy, Minerals and Natural Resources Department

Form C-102
Revised February 10, 1994
Submit to Appropriate District Office
State Lease - 4 Copies
Fee Lease - 3 Copies

DISTRICT II
P.O. Drawer DD, Artesia, NM 88211-0719

DISTRICT III
1000 Rio Brazos Rd., Aztec, NM 87410

OIL CONSERVATION DIVISION

P.O. Box 2088

Santa Fe, New Mexico 87504-2088

DISTRICT IV
P.O. BOX 2088, SANTA FE, N.M. 87504-2088

AMENDED REPORT

WELL LOCATION AND ACREAGE DEDICATION PLAT

API Number 30-025-34182	Pool Code 15200	Pool Name Wildcat DK Abo
Property Code 22052	Property Name HALL	Well Number 1
OGRID No. 25482	Operator Name XERIC OIL AND GAS CORPORATION	Elevation 3577

Surface Location

UL or lot No.	Section	Township	Range	Lot Idn	Feet from the	North/South line	Feet from the	East/West line	County
P	14	20 S	38 E		330	SOUTH	660	EAST	LEA

Bottom Hole Location If Different From Surface

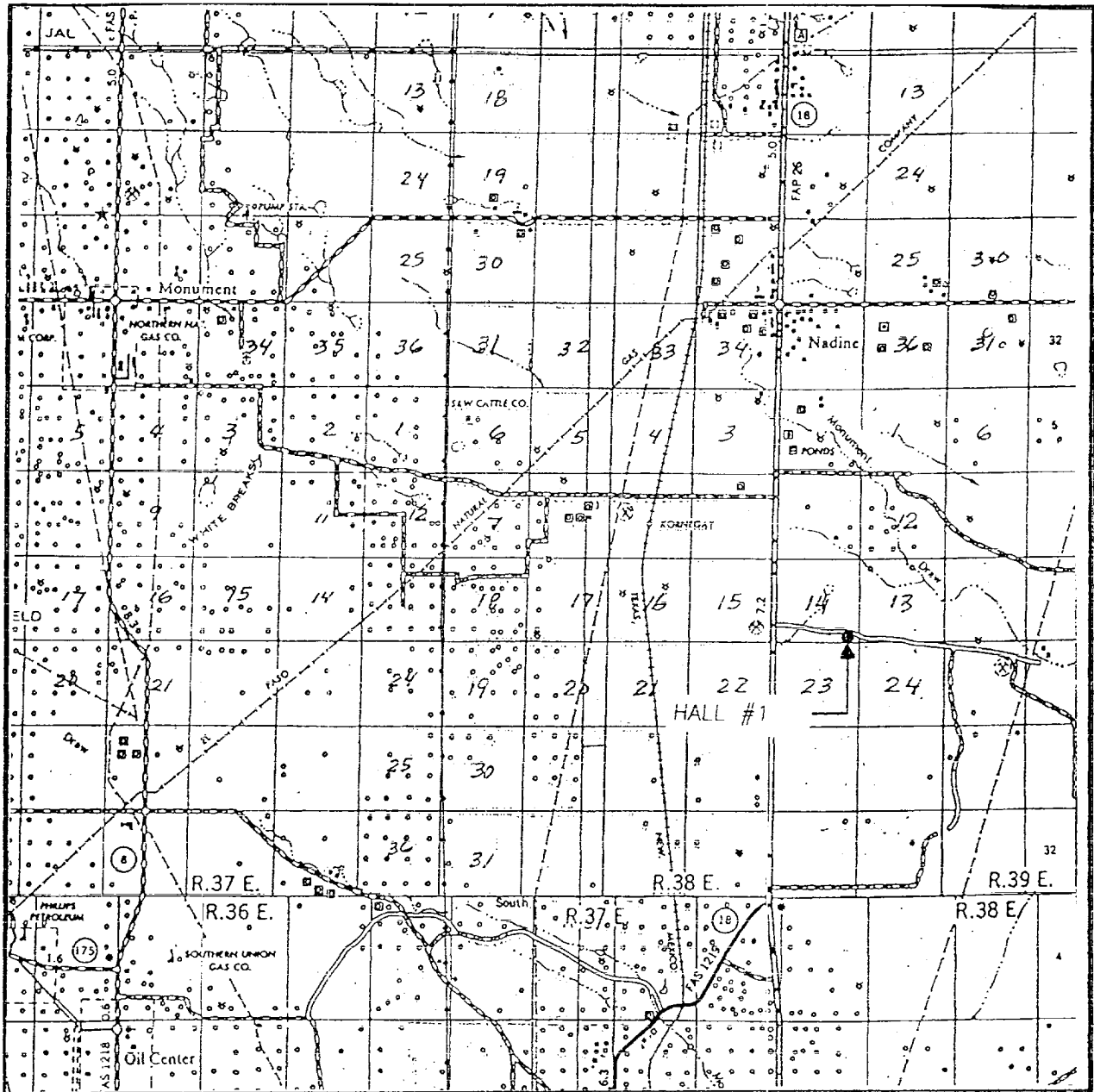
UL or lot No.	Section	Township	Range	Lot Idn	Feet from the	North/South line	Feet from the	East/West line	County

Dedicated Acres 40	Joint or Infill I	Consolidation Code	Order No.
-----------------------	----------------------	--------------------	-----------

NO ALLOWABLE WILL BE ASSIGNED TO THIS COMPLETION UNTIL ALL INTERESTS HAVE BEEN CONSOLIDATED OR A NON-STANDARD UNIT HAS BEEN APPROVED BY THE DIVISION

	<p>OPERATOR CERTIFICATION</p> <p>I hereby certify the the information contained herein is true and complete to the best of my knowledge and belief.</p> <p><i>Michael G. Mooney</i> Signature</p> <p>Michael G. Mooney Printed Name</p> <p>Consulting Engineer Title</p> <p>11/01/97 Date</p>
	<p>SURVEYOR CERTIFICATION</p> <p>I hereby certify that the well location shown on this plat was plotted from field notes of actual surveys made by me or under my supervision, and that the same is true and correct to the best of my belief.</p> <p>OCTOBER 23, 1997 Date Surveyed</p> <p>DMCC</p> <p>Signature & Seal of Professional Surveyor <i>Ronald E. Eidson</i> 10-29-97</p> <p>Certificate No. JOHN W. WEST 676 RONALD E. EIDSON 3239 RONALD E. EIDSON 12641</p>

VICINITY MAP

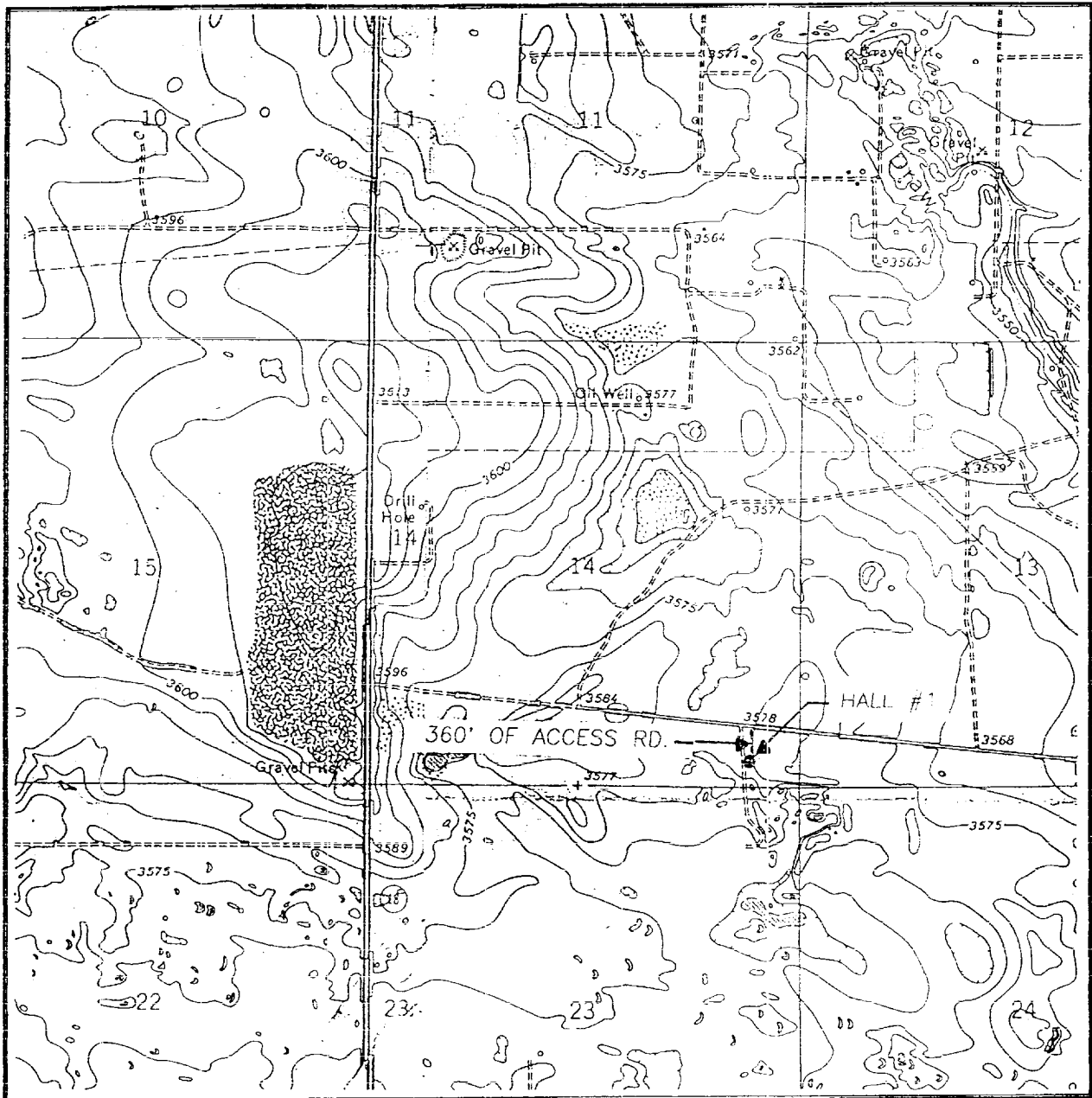


SCALE: 1" = 2 MILES

SFC. 14 TWP. 20-S RGE. 38-E
 SURVEY N.M.P.M.
 COUNTY LEA
 DESCRIPTION 330' FSL & 660' FEL
 ELEVATION 3577
 OPERATOR XERIC OIL AND GAS CORPORATION
 LEASE HALL

JOHN WEST ENGINEERING
HOBBS, NEW MEXICO
(505) 393-3117

LOCATION VERIFICATION MAP



SCALE: 1" = 2000'

CONTOUR INTERVAL:

HOBBS SW - 5'

HOBBS SE - 5'

SEC. 14 TWP. 20 S. RGE. 38-E

SURVEY _____ N.M.P.M.

COUNTY _____ LEA

DESCRIPTION 330' FSL & 660' FEL

ELEVATION _____ 3577

OPERATOR _____ XERIC OIL AND GAS CORPORATION

LEASE _____ HALL

U.S.G.S. TOPOGRAPHIC MAP

JOHN WEST ENGINEERING
HOBBS, NEW MEXICO

(505) 393-3117

