

## DISTRICT I

P.O. Box 1980, Hobbs, NM 88241-1980

## DISTRICT II

P.O. Box Drawer DD, Artesia, NM 88211-0719

## DISTRICT III

1000 Rio Brazos Rd., Aztec, NM 87410

## DISTRICT IV

P.O. Box 2088, Santa Fe, NM 87504-2088

## State of New Mexico

Energy, Minerals and Natural Resources Department

Form C-101

Revised February 10, 1994

Instructions on back

Submit to Appropriate District Office

State Lease - 6 Copies

Fee Lease - 5 Copies

☐ AMENDED REPORT

## OIL CONSERVATION DIVISION

P.O. Box 2088

Santa Fe, New Mexico 87504-2088

## APPLICATION FOR PERMIT TO DRILL, RE-ENTER, DEEPEN, PLUGBACK, OR ADD A ZONE

<sup>1</sup> Operator Name and Address TEXACO EXPLORATION & PRODUCTION INC. P.O. Box 3109, Midland Texas 79702		<sup>2</sup> OGRID Number 022351
<sup>4</sup> Property Code 11132		<sup>3</sup> API Number 30-025-34603
<sup>5</sup> Property Name C. H. WEIR 'B'		<sup>8</sup> Well No. 11

<sup>7</sup> Surface Location

Ul or lot no.	Section	Township	Range	Lot.Idn	Feet From The	North/South Line	Feet From The	East/West Line	County
P	11	20-S	37-E		990	South	990	East	Lea

<sup>8</sup> Proposed Bottom Hole Location If Different From Surface

Ul or lot no.	Section	Township	Range	Lot.Idn	Feet From The	North/South Line	Feet From The	East/West Line	County

<sup>9</sup> Proposed Pool 1 Monument/Tubb	<sup>10</sup> Proposed Pool 2 Skaggs/Drindard: Skaggs/Abo
---	--

<sup>11</sup> Work Type Code N	<sup>12</sup> Well Type Code G	<sup>13</sup> Rotary or C.T. ROTARY	<sup>14</sup> Lease Type Code P	<sup>15</sup> Ground Level Elevation 3561'
<sup>16</sup> Multiple No	<sup>17</sup> Proposed Depth 7600'	<sup>18</sup> Formation Tubb/Drinkard/Abo	<sup>19</sup> Contractor Nabors	<sup>20</sup> Spud Date 5/1/99

<sup>21</sup> Proposed Casing and Cement Program

SIZE OF HOLE	SIZE OF CASING	WEIGHT PER FOOT	SETTING DEPTH	SACKS OF CEMENT	EST. TOP
12 1/4"	9 5/8"	36#	1400'	660 Sacks	Surface
8 3/4"	7"	23#	7400'	905 Sacks	Circulate

<sup>22</sup> Describe the proposed program. If this application is to DEEPEN or PLUG BACK give the data on the present productive zone and proposed new productive zone.  
Describe the blowout prevention program, if any. Use additional sheets if necessary.

## Cementing Program:

Surface Casing: 660 Sacks Class C w/4% Gel, 2% CC (14.8 PPG, 1.33 CF/S, 6.3 GW/S).

Production Casing: 1st Stage: 540 Sacks 50/50 Poz H w/2% Gel, 5% Salt, 1/4# FC (12.8 PPG, 1.94 CF/S, 11.9 GW/S). F/B 35 Sacks 50/50 Poz H w/2% Gel, 5% Salt, 1/4# FC (14.2 PPG, 1.35 CF/S, 6.3 GW/S).

DV Tool @ 5200': 2nd Stage: 235 Sacks 35/65 Poz H w/6% Gel, 5% Salt, 1/4# FC (14.2 PPG, 1.35 CF/S, 6.3 GW/S). F/B 95 Sacks 50/50 Poz H w/2% Gel, 5% Salt, 1/4# FC (12.8 PPG, 1.94 CF/S, 11.9 GW/S).

Permit Expires 1 Year From Approval  
Date Unless Drilling Underway

<sup>23</sup> I hereby certify that the rules and regulations of the Oil Conservation Division have been complied with and that the information given above is true and complete to the best of my knowledge and belief.

Signature

A. Phil Ryan

Printed Name

A. Phil Ryan

Title

Commission Coordinator

Date 4/6/99

Telephone 688-4606

## OIL CONSERVATION DIVISION

Approved By:

Title:

Approval Date:

Expiration Date:

Conditions of Approval:

Attached ☐

DISTRICT I  
P. O. Box 1980, Hobbs, NM 88240

DISTRICT II  
P. O. Drawer DD, Artesia, NM 88210

DISTRICT III  
1000 Rio Brazos Rd., Aztec, NM 87410

DISTRICT IV  
P. O. Box 2088, Santa Fe, NM 87504-2088

State of New Mexico  
Energy, Minerals and Natural Resources Department

Form C-102  
Revised February 10, 1994

Instructions on back

OIL CONSERVATION DIVISION  
PO Box 2088  
Santa Fe, NM 87504-2088

Submit to Appropriate District Office

State Lease-4 copies  
Fee Lease-3 copies

☐ AMENDED REPORT

WELL LOCATION AND ACREAGE DEDICATION PLAT

<sup>1</sup> API Number 30-02S-34603		<sup>2</sup> Pool Code 57000		<sup>3</sup> Pool Name Drinkard, Skaggs Drinkard	
<sup>4</sup> Property Code 11132		<sup>5</sup> Property Name C.H. Wier "B"			<sup>6</sup> Well Number 11
<sup>7</sup> OGRID No. 22351		<sup>8</sup> Operator Name TEXACO EXPLORATION & PRODUCTION, INC.			<sup>9</sup> Elevation 3561'

<sup>10</sup> Surface Location									
UL or lot no. P	Section 11	Township 20-S	Range 37-E	Lot Idn	Feet from the 990	North/South line South	Feet from the 990'	East/West line East	<sup>7</sup> County Lea

<sup>11</sup> Bottom Hole Location If Different From Surface									
UL or lot no.	Section	Township	Range	Lot Idn	Feet from the	North/South line	Feet from the	East/West line	<sup>7</sup> County
<sup>12</sup> Dedicated Acres 40		<sup>13</sup> Joint or Infill		<sup>14</sup> Consolidation Code		<sup>15</sup> Order No.			

NO ALLOWABLE WILL BE ASSIGNED TO THIS COMPLETION UNTIL ALL INTERESTS HAVE BEEN CONSOLIDATED  
OR A NON-STANDARD UNIT HAS BEEN APPROVED BY THE DIVISION.

	<sup>16</sup> OPERATOR CERTIFICATION I hereby certify that the information contained herein is true and complete to the best of my knowledge and belief. Signature <i>A. Phil Ryan</i> Printed Name A. Phil Ryan Position Commission Coordinator Company Texaco Expl. & Prod. Inc. Date April 1, 1999
	<sup>17</sup> SURVEYOR CERTIFICATION I hereby certify that the well location shown on this plat was plotted from field notes of actual surveys made by me or under my supervision, and that the same is true and correct to the best of my knowledge and belief. Date Surveyed March 25, 1999 Signature & Seal of Professional Surveyor <i>John S. Piper</i> Certificate No. 7254 John S. Piper
	Sheet

○ = Staked Location ● = Producing Well = Injection Well ◇ = Water Supply Well ◆ = Plugged & Abandon Well  
⊙ = Found Section Corner, 2 or 3" Iron Pipe & GLO B.C. ○ = Found 1/4 Section Corner, 1" Iron Pipe & GLO B.C.

ADDITIONAL INFORMATION ON THE LOCATION

State Plane Coordinates Northing 577,660.51		Easting 885,234.46	
Latitude 32°34'58.661"		Longitude 103°12'58.950"	
Zone East	North American Datum 1983	Combined Grid Factor .9998457	Coordinate File Monumt83.CRS
Drawing File		Field Book	

DISTRICT I  
P. O. Box 1980, Hobbs, NM 88240

DISTRICT II  
P. O. Drawer DD, Artesia, NM 88210

DISTRICT III  
1000 Rio Brazos Rd., Aztec, NM 87410

DISTRICT IV  
P. O. Box 2088, Santa Fe, NM 87504-2088

State of New Mexico  
Energy, Minerals and Natural Resources Department

OIL CONSERVATION DIVISION  
PO Box 2088  
Santa Fe, NM 87504-2088

Form C-102  
Revised February 10, 1994

Instructions on back

Submit to Appropriate District Office

State Lease-4 copies  
Fee Lease-3 copies

☐ AMENDED REPORT

WELL LOCATION AND ACREAGE DEDICATION PLAT

<sup>1</sup> API Number 30-025-34603		<sup>2</sup> Pool Code 47090		<sup>3</sup> Pool Name Tubb, Monument Tubb				
<sup>4</sup> Property Code 11/32		<sup>5</sup> Property Name C.H. Wier "B"			<sup>6</sup> Well Number 11			
<sup>7</sup> OGRID No. 22351		<sup>8</sup> Operator Name TEXACO EXPLORATION & PRODUCTION, INC.			<sup>9</sup> Elevation 3561'			
<sup>10</sup> Surface Location								
UL or lot no. P	Section 11	Township 20-S	Range 37-E	Lot Idn 990	Feet from the North/South line South 990'	East/West line East	<sup>7</sup> County Lea	
<sup>11</sup> Bottom Hole Location If Different From Surface								
UL or lot no.	Section	Township	Range	Lot Idn	Feet from the North/South line	Feet from the	East/West line	<sup>7</sup> County
<sup>12</sup> Dedicated Acres 80		<sup>13</sup> Joint or Infill		<sup>14</sup> Consolidation Code		<sup>15</sup> Order No.		

NO ALLOWABLE WILL BE ASSIGNED TO THIS COMPLETION UNTIL ALL INTERESTS HAVE BEEN CONSOLIDATED  
OR A NON-STANDARD UNIT HAS BEEN APPROVED BY THE DIVISION.

	<sup>16</sup> OPERATOR CERTIFICATION I hereby certify that the information contained herein is true and complete to the best of my knowledge and belief. Signature: <i>A. Phil Ryan</i> Printed Name: A. Phil Ryan Position: Commission Coordinator Company: Texaco Expl. & Prod. Inc. Date: April 1, 1999
	<sup>17</sup> SURVEYOR CERTIFICATION I hereby certify that the well location shown on this plat was plotted from field notes of actual surveys made by me or under my supervision, and that the same is true and correct to the best of my knowledge and belief. Date Surveyed: March 25, 1999 Signature & Seal of Professional Surveyor: <i>John S. Piper</i> Certificate No.: 7254 John S. Piper
	Sheet

○ = Staked Location ● = Producing Well = Injection Well ◊ = Water Supply Well ◆ = Plugged & Abandon Well  
⊙ = Found Section Corner, 2 or 3" Iron Pipe & GLO B.C. ○ = Found 1/4 Section Corner, 1" Iron Pipe & GLO B.C.

ADDITIONAL INFORMATION ON THE LOCATION

State Plane Coordinates			
Northing 577,660.51		Easting 885,234.46	
Latitude 32°34'58.661"		Longitude 103°12'58.950"	
Zone	North American Datum	Combined Grid Factor	Coordinate File
East	1983	.9998457	Monumt83.CR5
Drawing File		Field Book	
Chweir_11.dwg		Lea County, #18, Pg. 35	

DISTRICT I  
P. O. Box 1980, Hobbs, NM 88240

DISTRICT II  
P. O. Drawer DD, Artesia, NM 88210

DISTRICT III  
1000 Rio Brazos Rd., Aztec, NM 87410

DISTRICT IV  
P. O. Box 2088, Santa Fe, NM 87504-2088

State of New Mexico  
Energy, Minerals and Natural Resources Department

OIL CONSERVATION DIVISION  
PO Box 2088  
Santa Fe, NM 87504-2088

Form C-102  
Revised February 10, 1994

Instructions on back

Submit to Appropriate District Office

State Lease-4 copies  
Fee Lease-3 copies

☐ AMENDED REPORT

WELL LOCATION AND ACREAGE DEDICATION PLAT

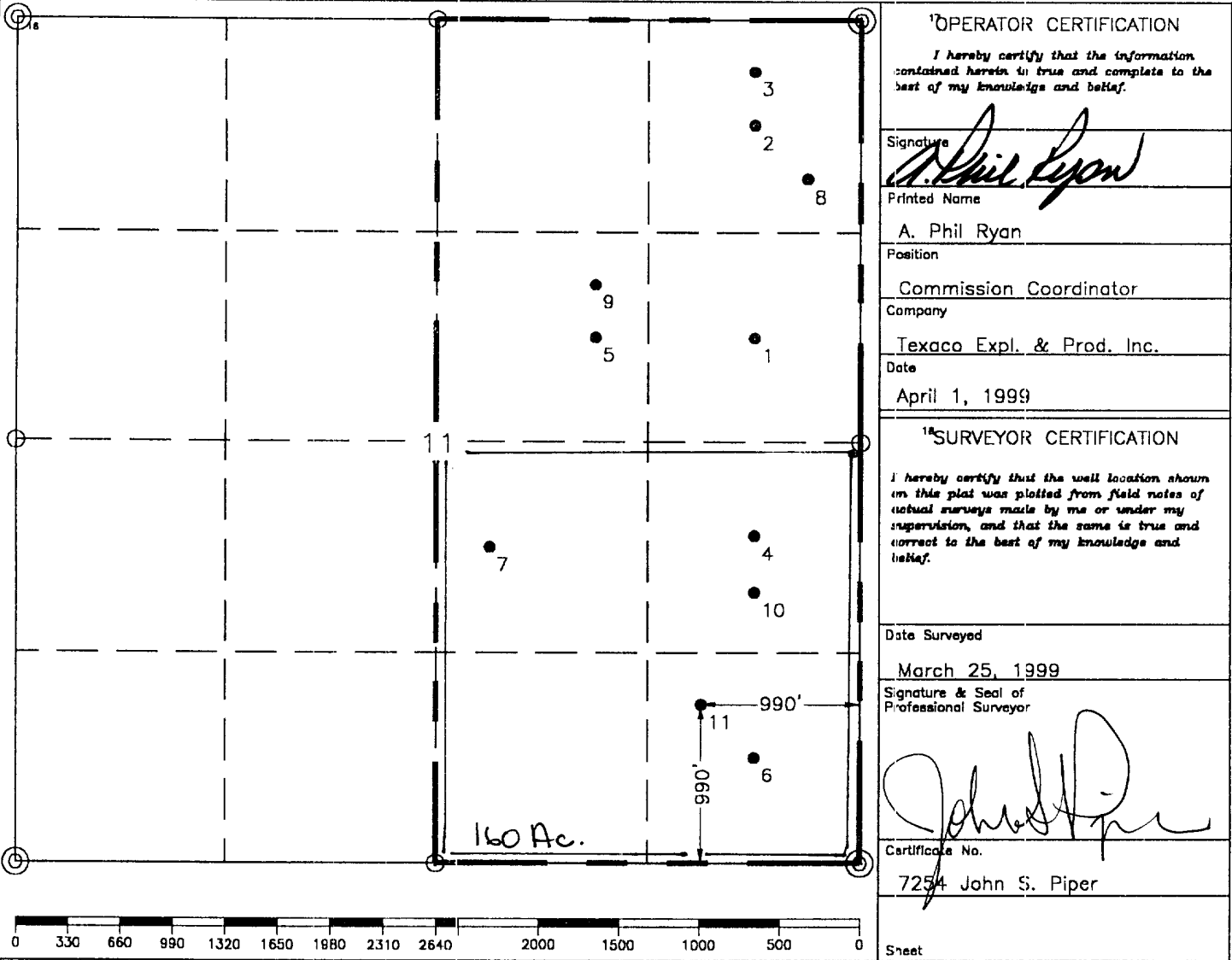
<sup>1</sup> API Number 30-025-34603		<sup>2</sup> Pool Code 85410		<sup>3</sup> Pool Name Abo, Skaggs Abo	
<sup>4</sup> Property Code 11132		<sup>5</sup> Property Name C.H. Wier "B"			
<sup>6</sup> DGRID No. 22351		<sup>7</sup> Operator Name TEXACO EXPLORATION & PRODUCTION, INC.			
		<sup>8</sup> Well Number 11		<sup>9</sup> Elevation 3561'	

<sup>10</sup> Surface Location									
UL or lot no. P	Section 11	Township 20-S	Range 37-E	Lot Idn	Feet from the 990	North/South line South	Feet from the 990'	East/West line East	<sup>7</sup> County Lea

<sup>11</sup> Bottom Hole Location If Different From Surface									
UL or lot no.	Section	Township	Range	Lot Idn	Feet from the	North/South line	Feet from the	East/West line	<sup>7</sup> County

<sup>12</sup> Dedicated Acres 160	<sup>13</sup> Joint or Infill	<sup>14</sup> Consolidation Code	<sup>15</sup> Order No.
--------------------------------------	-------------------------------	----------------------------------	-------------------------

NO ALLOWABLE WILL BE ASSIGNED TO THIS COMPLETION UNTIL ALL INTERESTS HAVE BEEN CONSOLIDATED  
OR A NON-STANDARD UNIT HAS BEEN APPROVED BY THE DIVISION.



<sup>17</sup> OPERATOR CERTIFICATION	
I hereby certify that the information contained herein is true and complete to the best of my knowledge and belief.	
Signature	<i>A. Phil Ryan</i>
Printed Name	A. Phil Ryan
Position	Commission Coordinator
Company	Texaco Expl. & Prod. Inc.
Date	April 1, 1999

<sup>18</sup> SURVEYOR CERTIFICATION	
I hereby certify that the well location shown on this plat was plotted from field notes of actual surveys made by me or under my supervision, and that the same is true and correct to the best of my knowledge and belief.	
Date Surveyed	March 25, 1999
Signature & Seal of Professional Surveyor	<i>John S. Piper</i>
Certificate No.	7254 John S. Piper
Sheet	

○ = Staked Location ● = Producing Well = Injection Well ◊ = Water Supply Well ◆ = Plugged & Abandon Well

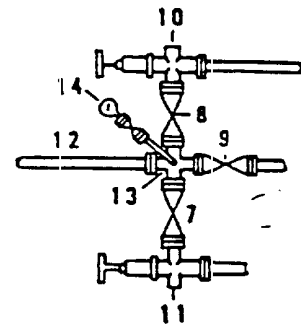
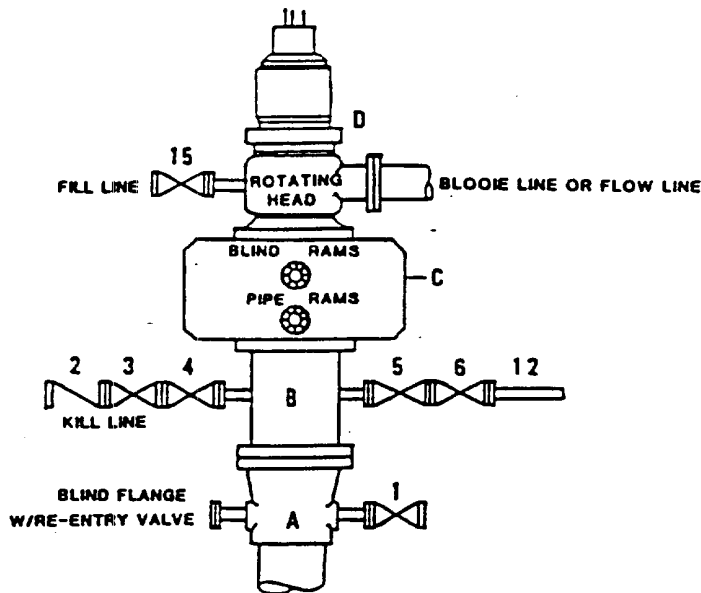
⊙ = Found Section Corner, 2 or 3" Iron Pipe & GLO B.C. ○ = Found 1/4 Section Corner, 1" Iron Pipe & GLO B.C.

ADDITIONAL INFORMATION ON THE LOCATION

State Plane Coordinates	
Northing 577,660.51	Easting 885,234.46
Latitude 32°34'58.661"	Longitude 103°12'58.950"
Zone North American Datum	Combined Grid Factor
East 1983	.9998457
Drawing File	Coordinate File
Chweir_11.dwg	Monumt83.CR5
	Field Book
	Lea County, #18, Pg. 35

**DRILLING CONTROL**  
**CONDITION II-B 3000 WP**  
**FOR AIR DRILLING OR**  
**WHERE NITROGEN OR AIR BLOWS ARE EXPECTED**

H<sub>2</sub>S TRIM REQUIRED  
 YES \_\_\_\_\_ NO X



DRILLING CONTROL

MATERIAL LIST - CONDITION II - B

- |             |   |
|-------------|---|
| A           | Texaco Wellhead   |
| B           | 3000# W.P. drilling spool with a 2" minimum flanged outlet for kill line and 3" minimum flanged outlet for choke line.  |
| C           | 3000# W.P. Dual ram type preventer, hydraulic operated with 1" steel, 3000# W.P. control lines (where sub-structure height is adequate, 2 - 3000# W.P. single ram type preventers may be utilized). |
| D           | Rotating Head with fill up outlet and extended Bloode Line.   |
| 1,3,4, 7,8, | 2" minimum 3000# W.P. flanged full opening steel gate valve, or Halliburton Lo Torc Plug valve.   |
| 2           | 2" minimum 3000# W.P. back pressure valve.  |
| 5,6,9       | 3" minimum 3000# W.P. flanged full opening steel gate valve, or Halliburton Lo Torc Plug valve.   |
| 12          | 3" minimum schedule 80, Grade "B", seamless line pipe.  |
| 13          | 2" minimum x 3" minimum 3000# W.P. flanged cross.   |
| 10,11       | 2" minimum 3000# W.P. adjustable choke bodies.  |
| 14          | Cameron Mud Gauge or equivalent ( location optional in choke line).   |
| 15          | 2" minimum 3000# W.P. flanged or threaded full opening steel gate valve, or Halliburton Lo Torc Plug valve.   |



TEXACO, INC.  
 MIDLAND DIVISION  
 MIDLAND, TEXAS



SCALE	DATE	EST. NO.	DRG. NO.
DRAWN BY			
CHECKED BY			
APPROVED BY			

EXHIBIT C

ELF — 11/18/83  
ABSOLUTE DOES NOT  
INDICATE WHEN  
CONFIDENTIAL LOGS  
WILL BE RELEASED