

District I  
1625 N. French Dr., Hobbs, NM 88240  
District II  
811 S. 1st Street, Artesia, NM 88210  
District III  
1000 Rio Brazos Rd., Aztec, NM 87410  
District IV  
2040 South Pacheco, Santa Fe, NM 87505

Oil Conservation Division  
2040 South Pacheco  
Santa Fe, NM 87505

Submit to appropriate District Office  
State Lease - 6 Copies  
Fee Lease - 5 Copies

AMENDED REPORT

**APPLICATION FOR PERMIT TO DRILL, RE-ENTER, DEEPEN, PLUGBACK, OR ADD A ZONE**

<sup>1</sup> Operator Name and Address <b>Chevron U.S.A. Inc.</b> <b>P.O. Box 1150 MIDLAND, TX 79702</b>		<sup>2</sup> OGRID Number <b>4323</b>
<sup>4</sup> Property Code <b>2571</b>	<sup>5</sup> Property Name <b>ARROWHEAD GRAYBURG UNIT</b>	<sup>3</sup> API Number <b>30-025-34823</b>
		<sup>6</sup> Well No. <b>352</b>

<sup>7</sup> Surface Location

UL or lot no.	Section	Township	Range	Lot. Idn	Feet from the	North/South Line	Feet from the	East/West line	County
<b>H</b>	<b>2</b>	<b>22S</b>	<b>36E</b>		<b>2500</b>	<b>NORTH</b>	<b>100</b>	<b>EAST</b>	<b>LEA</b>

<sup>8</sup> Proposed Bottom Hole Location If Different From Surface

UL or lot no.	Section	Township	Range	Lot. Idn	Feet from the	North/South Line	Feet from the	East/West line	County

<sup>9</sup> Proposed Pool 1 <b>ARROWHEAD; GRAYBURG 03040</b>	<sup>10</sup> Proposed Pool 2
--	-------------------------------

<sup>11</sup> Work Type Code <b>N</b>	<sup>12</sup> Well Type Code <b>O</b>	<sup>13</sup> Cable/Rotary <b>ROTARY</b>	<sup>14</sup> Lease Type Code <b>S</b>	<sup>15</sup> Ground Level Elevation <b>3524'</b>
<sup>16</sup> Multiple	<sup>17</sup> Proposed Depth <b>3895'</b>	<sup>18</sup> Formation <b>GRAYBURG</b>	<sup>19</sup> Contractor <b>UNKNOWN</b>	<sup>20</sup> Spud Date <b>1/25/99</b>

<sup>21</sup> Proposed Casing and Cement Program

Hole Size	Casing Size	Casing weight/foot	Setting Depth	Sacks of Cement	Estimated TOC
<b>12-1/4"</b>	<b>9-5/8"</b>	<b>36</b>	<b>500'</b>	<b>300</b>	<b>SURF</b>
<b>8-3/4"</b>	<b>7"</b>	<b>20</b>	<b>3895'</b>	<b>750</b>	<b>SURF</b>

<sup>22</sup> Describe the proposed program. If this application is to DEEPEN or PLUG BACK, give the data on the present productive zone and proposed new productive zone. Describe the blowout prevention program, if any. Use additional sheets if necessary.

**CHEVRON PROPOSES TO:**  
**DRILL 12-1/4" HOLE TO 500', RUN 9-5/8" CSG. CMT W/CLASS "C" TO SURF.**  
**DRILL 8-3/4" HOLE TO 3895', RUN 7" CSG. CMT W/CLASS "C" TO SURF.**

**MUD PROGRAM:** 0' - 500' 8.4 PPG FRESH WATER  
500' - 3895' 10.0 PPG BRINE WATER

Permit Expires 1 Year From Approval  
Date Unless Drilling Underway

**CHEVRON CLASS II BOPE**

<sup>23</sup> I hereby certify that the information given above is true and complete to the best of my knowledge and belief

Signature: *J. K. Ripley*

Printed name: **J. K. RIPLEY**

Title: **REGULATORY O.A.**

Date: **12/29/99**

Phone: **(915) 687-7148**

**OIL CONSERVATION DIVISION**

Approved by:

Title:

Approval Date: **JAN 06 2000**

Expiration Date:

Conditions of Approval:

Attached

*Handwritten initials*

DISTRICT I  
P.O. Box 1980, Hobbs, NM 88241-1980

State of New Mexico  
Energy, Minerals and Natural Resources Department

Form C-102  
Revised February 10, 1994  
Submit to Appropriate District Office  
State Lease - 4 Copies  
Fee Lease - 3 Copies

DISTRICT II  
P.O. Drawer 80, Artesia, NM 88211-0710

OIL CONSERVATION DIVISION  
P.O. Box 2088  
Santa Fe, New Mexico 87504-2088

AMENDED REPORT

DISTRICT III  
1000 Rio Erasos Rd., Artesia, NM 87410

DISTRICT IV  
P.O. BOX 2088, SANTA FE, N.M. 87504-2088

WELL LOCATION AND ACREAGE DEDICATION PLAT

API Number <b>30-025-34823</b>	Pool Code 03040	Pool Name ARROWHEAD; GRAYBURG
Property Code 2571	Property Name AGU	Well Number 352
OGED No. 4323	Operator Name CHEVRON U.S.A. PRODUCTION COMPANY	Elevation 3524

Surface Location

UL or lot No.	Section	Township	Range	Lot Idn	Feet from the	North/South line	Feet from the	East/West line	County
H	2	22 S	36 E		2500	NORTH	100	EAST	LEA

Bottom Hole Location If Different From Surface

UL or lot No.	Section	Township	Range	Lot Idn	Feet from the	North/South line	Feet from the	East/West line	County

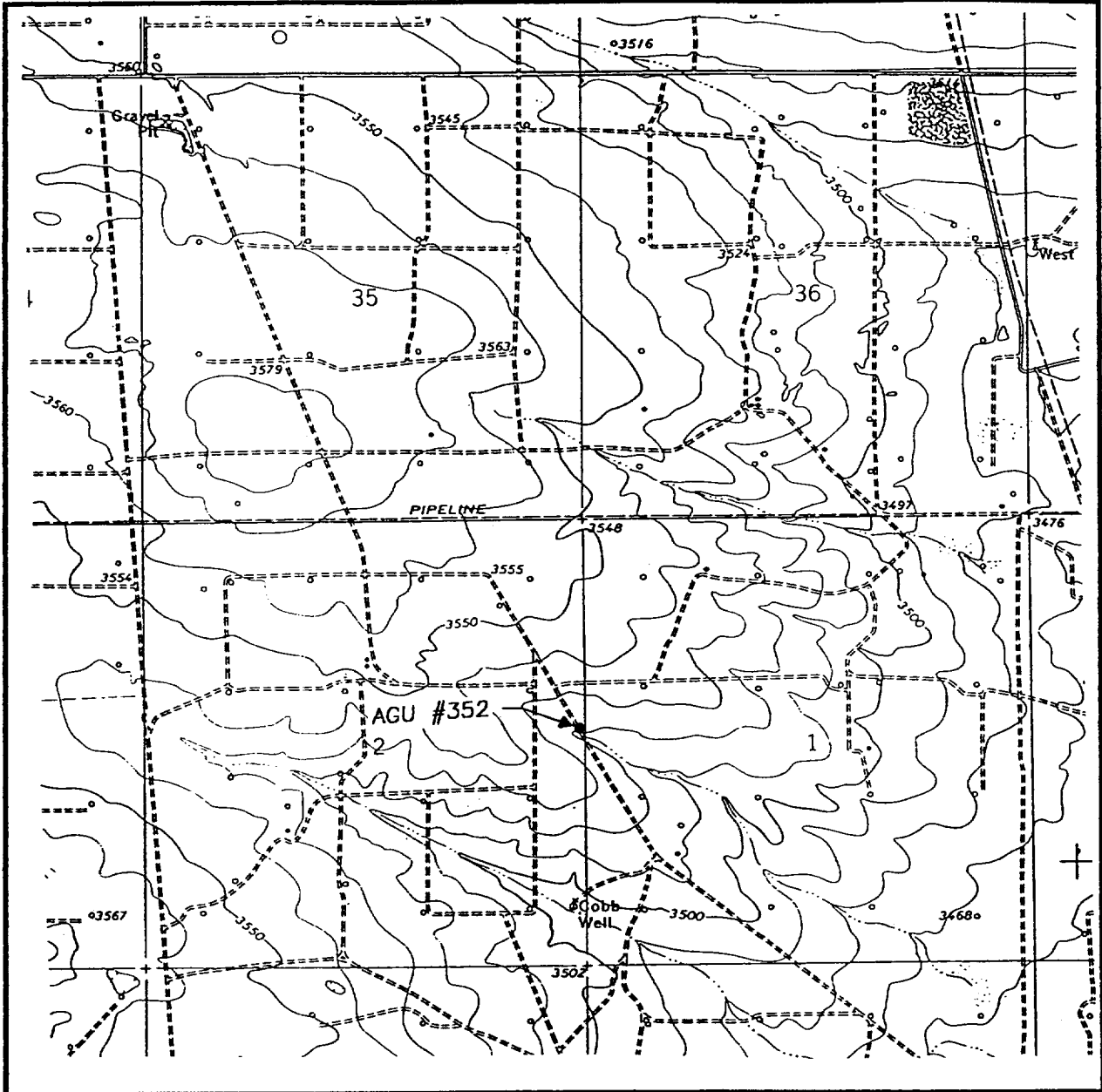
Dedicated Acres 40	Joint or Infill	Consolidation Code	Order No.
-----------------------	-----------------	--------------------	-----------

NO ALLOWABLE WILL BE ASSIGNED TO THIS COMPLETION UNTIL ALL INTERESTS HAVE BEEN CONSOLIDATED OR A NON-STANDARD UNIT HAS BEEN APPROVED BY THE DIVISION

	<p><b>OPERATOR CERTIFICATION</b></p> <p>I hereby certify the the information contained herein is true and complete to the best of my knowledge and belief.</p> <p><i>J. K. Ripley</i> Signature J. K. RIPLEY Printed Name REGULATORY O. A. Title 12/29/99 Date</p>
	<p><b>SURVEYOR CERTIFICATION</b></p> <p>I hereby certify that the well location shown on this plat was plotted from field notes of actual surveys made by me or under my supervision, and that the same is true and correct to the best of my belief.</p> <p>DECEMBER 14, 1999 Date Surveyed LMP Signature &amp; Seal of Professional Surveyor <i>Ronald J. Eidson</i> 12-20-99 89-11-1071</p> <p>Certificate No. RONALD J. EIDSON 3239 GARY EIDSON 12641 MCDONALD 12185</p>



# LOCATION VERIFICATION MAP



SCALE: 1" = 2000'

CONTOUR INTERVAL:  
EUNICE, N.M. - 10'

SEC. 2 TWP. 22-S RGE. 36-E

SURVEY N.M.P.M.

COUNTY LEA

DESCRIPTION 2500' FNL & 100' FEL

ELEVATION 3524

OPERATOR CHEVRON U.S.A. PRODUCTION COMPANY

LEASE AGU

**JOHN WEST SURVEYING**  
**HOBBS, NEW MEXICO**  
**(505) 393-3117**

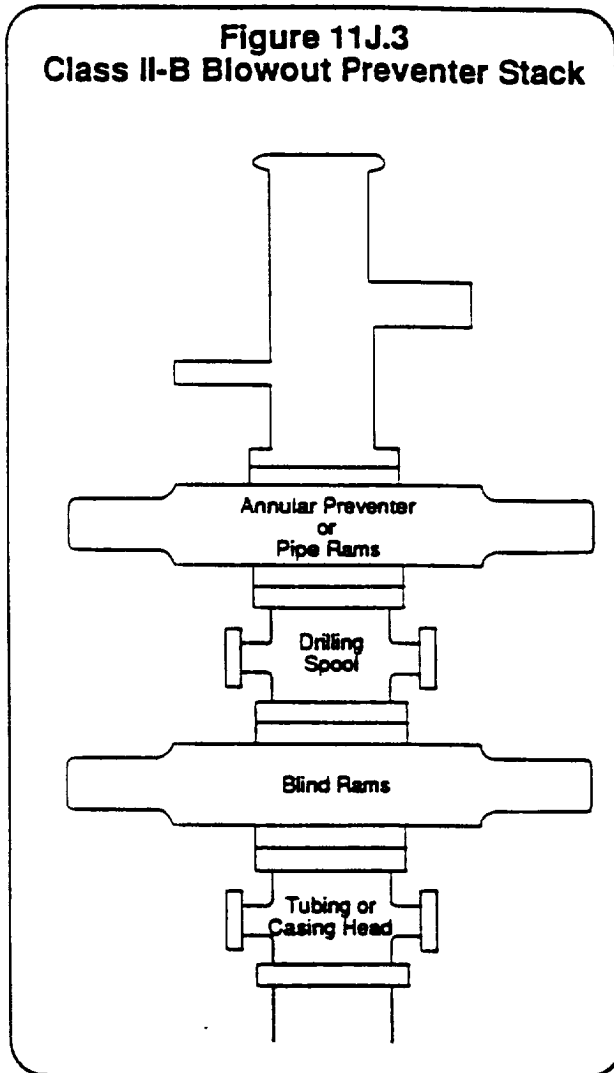
U.S.G.S. TOPOGRAPHIC MAP  
EUNICE, N.M.



CHEVRON DRILLING REFERENCE SERIES  
VOLUME ELEVEN  
WELL CONTROL AND BLOWOUT PREVENTION

D. CLASS II-B BLOWOUT PREVENTER STACK:

**Figure 11J.3**  
**Class II-B Blowout Preventer Stack**



The Class II-B preventer stack is designed for drilling or workover operations. It is composed of a single hydraulically operated annular preventer on top, then a drilling spool, and a single blind ram preventer on bottom. In an alternate configuration, a single pipe ram preventer may be substituted for the annular preventer. The choke and kill lines are installed onto the drilling spool and must have a minimum internal diameter of 2". An emergency kill line may be installed on the wellhead. As the maximum anticipated surface pressure of this stack is less than 2000 psi, screwed connections may be used. All components must be of steel construction. The Class II-B blowout preventer stack is shown to the left in Figure 11J.3.

WILL BE RELEASED  
CONFIDENTIAL LOGS  
INDICATE WHEN  
ABOVE DATE DOES NOT

ELF 2/21/2000

