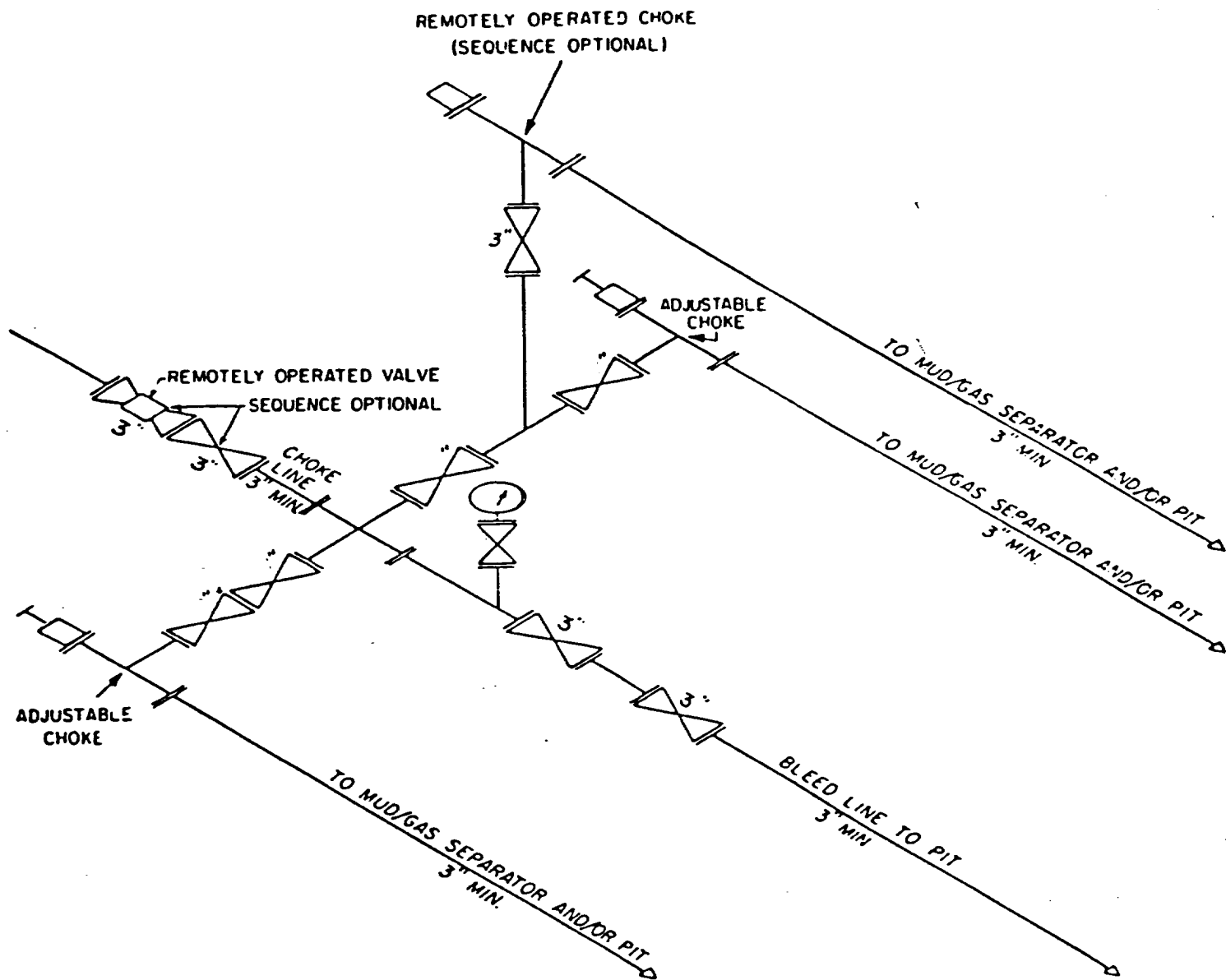


5 M CHOKE MANIFOLD EQUIPMENT



CHOKE MANIFOLD EQUIPMENT — CONFIGURATION MAY VARY

BTA OIL PRODUCERS
#3 Grama Ridge Fed, 8817 JV-P
660' FSL & 660" FWL
Sec. 9, T22S, R34E
Lea County, NM

IF

1/3/21
ABOVE DATE DOES NOT
INDICATE WHEN
CONFIDENTIAL LOGS
WILL BE RELEASED

RECEIVED
Hobbs
JAN 3 2021