



RECEIVED

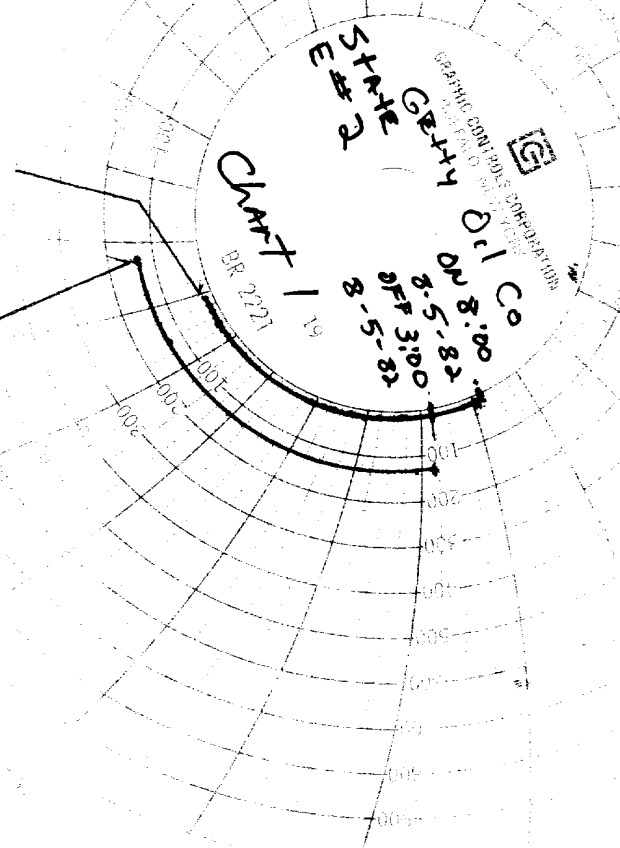
SEP 20 1982

O.C.D.  
NOBBS OFFICE

6 P.M. 7 8 9  
MIDNIGHT

UPPER EMBROID  
(GAS) SLIT IN  
PUT UNDER  
#50

LOWER EMBROID  
SLIT IN  
COSEAL  
MOON

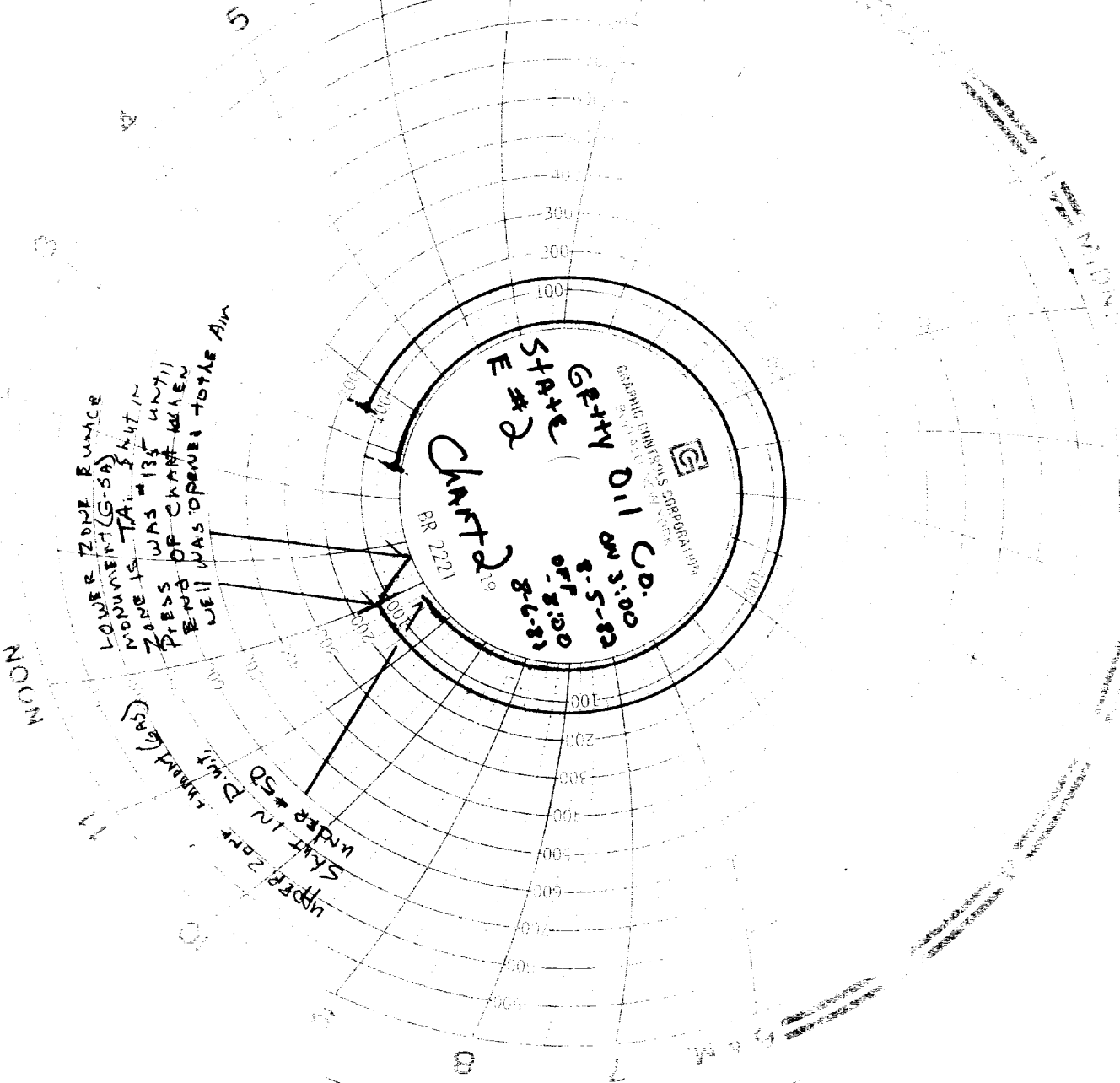


STATE #2  
GETH  
D.I. COO  
DN 8:00  
DT 3:00  
8-5-82

GRAPHIC CONTROL CORPORATION

DR 2221

6 P.M. = 7 = 8



LOWER ZONE RUNNICE  
 MONUMENT (G-5A)  
 TA. 3 647 IN  
 ZONE WAS #135 UNTIL  
 PRESS OF CHART WHEN  
 END OF CHART WHEN  
 WELL WAS OPENED TO THE AIR

UPPER ZONE  
 SKIT IN DIRT  
 UNDER #50  
 EMPT (LAD)

CHART #2  
 RR 2221  
 GETTYSBURG STATE OIL CO. D.D.  
 8-5-82  
 OFF 8-100  
 8-6-82

NOON

3

5

6

7

8

MIDN.

GRAPHIC INSTRUMENTS CORPORATION  
 1000 W. 10th St. Okla. City, Okla. 73106  
 (405) 233-1111

THE BUREAU OF LAND MANAGEMENT  
 U.S. DEPARTMENT OF THE INTERIOR  
 DENVER, COLORADO 80202