

# Getty Oil Company

~~XXXXXXXXXXXX~~ NORTH AMERICAN EXPLORATION AND PRODUCTION

P. O. Box 249  
Hobbs, New Mexico 88240

December 20, 1971

New Mexico Oil Conservation Commission  
P. O. Box 2088  
Santa Fe, New Mexico 87501

Re: Reclassification from Oil to Gas  
of Getty's State "S" No. 4  
Blinebry Field  
Lea County, New Mexico

Gentlemen:

The subject well has been reclassified from an oil well to a gas well.  
This lease contains five (5) Blinebry wells.

We respectfully request that this well be granted a non-standard gas proration unit in accordance with Rule 29 of Order No. R-1670 (Special Rules and Regulations for the Blinebry Gas Pool). We further request that the 40 acres, as outlined on the attached C-102, be allocated to this well.

The offset operators have been furnished with copies of this letter with attachments.

Very truly yours,  
GETTY OIL COMPANY  
Original Signed By  
C. L. Wade  
C. L. Wade  
Area Superintendent

EJM/bh  
ATTACHMENTS

Orig. & 2 CC: NMOCC - Santa Fe  
1 C: NMOCC - Hobbs  
1 C: Getty - Midland  
1 C: Continental Oil Company - Hobbs  
1 C: Humble - Andrews  
1 C: Gulf - Hobbs  
1 C: Cities Service - Hobbs  
1 C: Shell - Hobbs  
1 C: Aztec - Hobbs  
1 C: File

RECEIVED

DEC 22 1971

OIL CONSERVATION COMM.  
HOBBS, N. M.

**NEW MEXICO OIL CONSERVATION COMMISSION  
WELL LOCATION AND ACREAGE DEDICATION PLAT**

Form C-102  
Supersedes C-128  
Effective 1-1-65

All distances must be from the outer boundaries of the Section.

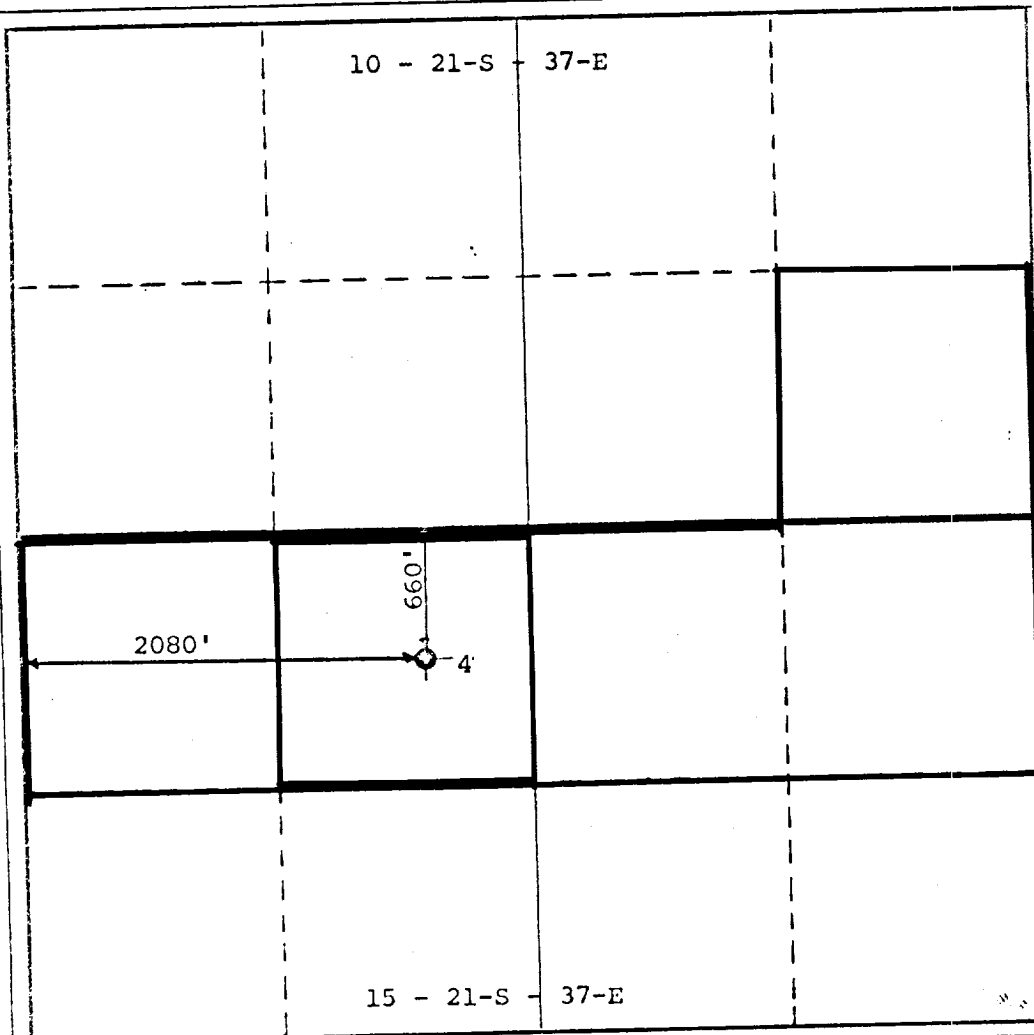
Operator <b>GETTY OIL COMPANY</b>			Lease <b>STATE "S"</b>		Well No. <b>4</b>
Unit Letter <b>C</b>	Section <b>15</b>	Township <b>21-S</b>	Range <b>37-E</b>	County <b>LEA</b>	
Actual Footage Location of Well: <b>660</b> feet from the <b>NORTH</b> line and <b>2080</b> feet from the <b>WEST</b> line					
Ground Level Elev. <b>3459 DF</b>	Producing Formation <b>BLINEBRY</b>		Pool <b>BLINEBRY</b>		Dedicated Acreage: <b>40</b> Acres

1. Outline the acreage dedicated to the subject well by colored pencil or hatchure marks on the plat below.
2. If more than one lease is dedicated to the well, outline each and identify the ownership thereof (both as to working interest and royalty).
3. If more than one lease of different ownership is dedicated to the well, have the interests of all owners been consolidated by communitization, unitization, force-pooling, etc?

☐ Yes ☐ No If answer is "yes," type of consolidation \_\_\_\_\_

If answer is "no," list the owners and tract descriptions which have actually been consolidated. (Use reverse side of this form if necessary.) \_\_\_\_\_

No allowable will be assigned to the well until all interests have been consolidated (by communitization, unitization, forced-pooling, or otherwise) or until a non-standard unit, eliminating such interests, has been approved by the Commission.



**CERTIFICATION**

I hereby certify that the information contained herein is true and complete to the best of my knowledge and belief. By  
**C. L. Wade**

Name

**C. L. Wade**

Position

**AREA SUPERINTENDENT**

Company

**GETTY OIL COMPANY**

Date

**DECEMBER 21, 1971**

I hereby certify that the well location shown on this plat was plotted from field notes of actual surveys made by me or under my supervision, and that the same is true and correct to the best of my knowledge and belief.

Date Surveyed

Registered Professional Engineer and/or Land Surveyor

Certificate No.

0 330 660 990 1320 1650 1980 2310 2640 2000 1500 1000 500 0