

Fig. 1. USGS THE DIVIDE QUADRANGLE, 7.5 Minute Series, 1;24,000, 1984, Prov. Ed., showing PHILLIPS PETROELIUM COMPANY'S proposed Luke Federal Well No. 1, 1980' FNL, 660' FWL, and access road and Luke Federal Well No. 2, 660' FNL, and access road, Section 31, T21S, R32E, NMPM, Lea County, NM

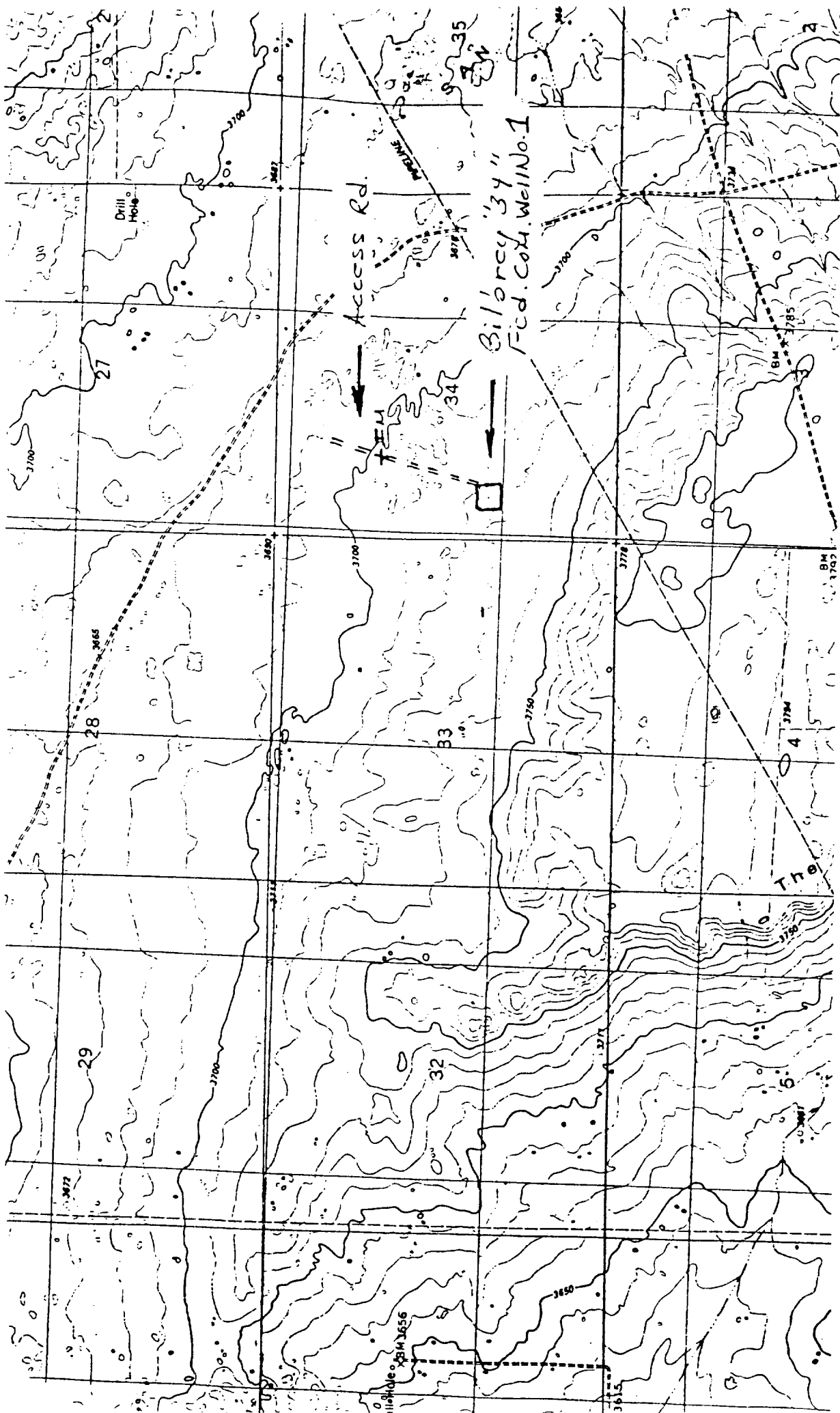


Fig. 2. USGS THE DIVIDE QUADRANGLE, 7.5 Minute Series, 1:24,000, 1984, showing PHILLIPS PETROLEUM COMPANY's proposed Bilbrey "34" Federal Com. Well No. 1, 1980' FSL, 660' FWL, and access road, Section 34, T21S, R32E, NMPM, Lea County, NM

16/10/2004
173

RECEIVED

NOV 06 1991

MOBBS OFFICE