

District I
P.O. Box 1980, Hobbs, NM 88241-1980
District II
811 South First, Artesia, NM 88210
District III
1000 Rio Brazos Rd., Aztec, NM 87410
District IV
2040 South Pacheco, Santa Fe, NM 87505

State of New Mexico
Energy, Minerals & Natural Resources Department

OIL CONSERVATION DIVISION
2040 South Pacheco
Santa Fe, NM 87505

Form C-101
Revised October 18, 1994
Instructions on back
Submit to Appropriate District Office
State Lease - 6 Copies
Fee Lease - 5 Copies

AMENDED REPORT

APPLICATION FOR PERMIT TO DRILL, RE-ENTER, DEEPEN, PLUGBACK, OR ADD A ZONE

1 Operator Name and Address Apache Corporation attn: Dennis Bickford; 3rd floor 2000 Post Oak Blvd. Ste. 100 Houston, Texas 77056-4400		2 OGRID Number 873
4 Property Code 23113		3 API Number 30-025-35709
5 Property Name State "C" Tract 12		6 Well No. 11

7 Surface Location									
UL or lot no.	Section	Township	Range	Lot Idn	Feet from the	North/South Line	Feet from the	East/West Line	County
E	16	21-S	37-E		1980	North	330	West	Lea

8 Proposed Bottom Hole Location If Different From Surface									
UL or lot no.	Section	Township	Range	Lot Idn	Feet from the	North/South Line	Feet from the	East/West Line	County
9 Proposed Pool 1 Penrose Skelly: Grayburg (50350)					10 Proposed Pool 2				

11 Work Type Code N	12 Well Type Code O	13 Cable/Rotary R	14 Lease Type Code S	15 Ground Level Elevation 3478' KB
16 Multiple	17 Proposed Depth 4450'	18 formation Grayburg	19 Contractor	20 Spud Date ASAP

21 Proposed Casing and Cement Program					
Hole Size	Casing Size	Casing weight/foot	Setting Depth	Sacks of Cement	Estimated TOC
12 1/4"	8 5/8"	24#	1100'	450 sxs	Circulate to Surf
7 7/8"	5 1/2"	17#	4450'	700 sxs	Circulate to Surf

22 Describe the proposed program. If this application is to DEEPEN or PLUG BACK give the data on the present productive zone and proposed new productive zone. Describe the blowout prevention program, if any. Use additional sheets if necessary.

Propose to drill 12 1/4" hole to 1100' or 50' into Anhydrite Formation, run & set 1100' of 8 5/8" and cement,
Lead: Class "C" + 2% calcium chloride + 0.25 lb/sx cello flake + 0.005% gps FP-6L + 6% bentonite.
Tail: Class "C" + 2% calcium chloride + 0.005 gps FP-6L.
Drill 7 7/8" hole to 4450', run & set 4450' of 5 1/2" casing and cement.
Lead: 35:65 POZ: Class "C" + 5% sodium chloride + 0.25 lb/sx cello flake + 0.005 gps FP-6L + 8% bentonite.
Tail: 50:50 POZ: Class "H" + 5% sodium + .25 lb/sx cello flake + 1% FL-25 + 0.005 gps FP-6L + bentonite.

Blow Out Prevention: See attached copy

23 I hereby certify that the information given above is true and complete to the best of my knowledge and belief.		OIL CONSERVATION DIVISION	
Signature: <i>Harold Swain</i>	Approval Date: ORIGINAL SIGNED BY		
Printed Name: Harold Swain	Title: PAUL F. KAUTZ		
Title: Drilling Foreman	Approval Date:	Expiration Date: SEP 18 2004	Conditions on Approval:
Date: 09/17/2001	Phone: 915-527-3521		

Permit Expires 1 Year From Approval Date Unless Drilling Underway

SCA

Handwritten initials/signature

State of New Mexico

DISTRICT I
P.O. Box 1980, Hobbs, NM 88241-1980

Energy, Minerals and Natural Resources Department

Form C-102
Revised February 10, 1994
Submit to Appropriate District Office
State Lease - 4 Copies
Fee Lease - 3 Copies

DISTRICT II
P.O. Drawer DD, Artesia, NM 88211-0719

OIL CONSERVATION DIVISION

P.O. Box 2088

Santa Fe, New Mexico 87504-2088

DISTRICT III
1000 Rio Brazos Rd., Aztec, NM 87410

DISTRICT IV
P.O. BOX 2088, SANTA FE, N.M. 87504-2088

WELL LOCATION AND ACREAGE DEDICATION PLAT

AMENDED REPORT

API Number 30-025-35709	Pool Code 50350	Pool Name Penrose Skelly: Grayburg
Property Code 23113	Property Name STATE "C" TRACT 12	Well Number 11
OGRID No. 873	Operator Name APACHE CORPORATION	Elevation 3478'

Surface Location

UL or lot No.	Section	Township	Range	Lot Idn	Feet from the	North/South line	Feet from the	East/West line	County
E	16	21-S	37-E		1980	NORTH	330	WEST	LEA

Bottom Hole Location If Different From Surface

UL or lot No.	Section	Township	Range	Lot Idn	Feet from the	North/South line	Feet from the	East/West line	County

Dedicated Acres 40	Joint or Infill	Consolidation Code	Order No.
-----------------------	-----------------	--------------------	-----------

NO ALLOWABLE WILL BE ASSIGNED TO THIS COMPLETION UNTIL ALL INTERESTS HAVE BEEN CONSOLIDATED OR A NON-STANDARD UNIT HAS BEEN APPROVED BY THE DIVISION

	<p>OPERATOR CERTIFICATION</p> <p>I hereby certify the the information contained herein is true and complete to the best of my knowledge and belief.</p> <p><i>Harold Swain</i> Signature</p> <p>Harold Swain Printed Name</p> <p>Drilling Foreman Title</p> <p>9/18/01 Date</p>
	<p>SURVEYOR CERTIFICATION</p> <p>I hereby certify that the well location shown on this plat was plotted from field notes of actual surveys made by me or under my supervision, and that the same is true and correct to the best of my belief.</p> <p>SEPTMEBER 13, 2001</p> <p>Date Surveyed</p> <p>Signature & Seal of Professional Surveyor</p> <p><i>Ronald J. Eibson</i> 9/17/01 01.11.1028</p>
	<p>Certificate No. RONALD J. EIBSON 3239 GARY EIDSON 12641</p>
	<p>AWB</p>

DISTRICT I
P.O. Box 1980, Hobbs, NM 88241-1980

State of New Mexico
Energy, Minerals and Natural Resources Department

Form C-102
Revised February 10, 1994
Submit to Appropriate District Office
State Lease - 4 Copies
Fee Lease - 3 Copies

DISTRICT II
P.O. Drawer DD, Artesia, NM 88211-0719

OIL CONSERVATION DIVISION

P.O. Box 2088
Santa Fe, New Mexico 87504-2088

DISTRICT III
1000 Rio Brazos Rd., Aztec, NM 87410

DISTRICT IV
P.O. BOX 2088, SANTA FE, N.M. 87504-2088

WELL LOCATION AND ACREAGE DEDICATION PLAT

AMENDED REPORT

API Number 30-025-	Pool Code 50350	Pool Name Penrose Skelly: Grayburg
Property Code 23113	Property Name STATE "C" TRACT 12	Well Number 11
OGRID No. 873	Operator Name APACHE CORPORATION	Elevation 3478'

Surface Location

UL or lot No.	Section	Township	Range	Lot Idn	Feet from the	North/South line	Feet from the	East/West line	County
E	16	21-S	37-E		1980	NORTH	330	WEST	LEA

Bottom Hole Location If Different From Surface

UL or lot No.	Section	Township	Range	Lot Idn	Feet from the	North/South line	Feet from the	East/West line	County

Dedicated Acres	Joint or Infill	Consolidation Code	Order No.

NO ALLOWABLE WILL BE ASSIGNED TO THIS COMPLETION UNTIL ALL INTERESTS HAVE BEEN CONSOLIDATED OR A NON-STANDARD UNIT HAS BEEN APPROVED BY THE DIVISION

APACHE STATE 'C' TRACT 12 #8

APACHE LOCKHART A-17#3

ALTURA STATE 'C' tract 12 #3

APACHE STATE 'D' A #1

1000 0 1000 2000 FEET

Scale: 1" = 1000'

OPERATOR CERTIFICATION

I hereby certify that the information contained herein is true and complete to the best of my knowledge and belief.

Harold Swain
Signature

Harold Swain
Printed Name

Drilling Foreman
Title

9/18/01
Date

SURVEYOR CERTIFICATION

I hereby certify that the well location shown on this plat was plotted from field notes of actual surveys made by me or under my supervision, and that the same is true and correct to the best of my belief.

SEPTEMBER 13, 2001

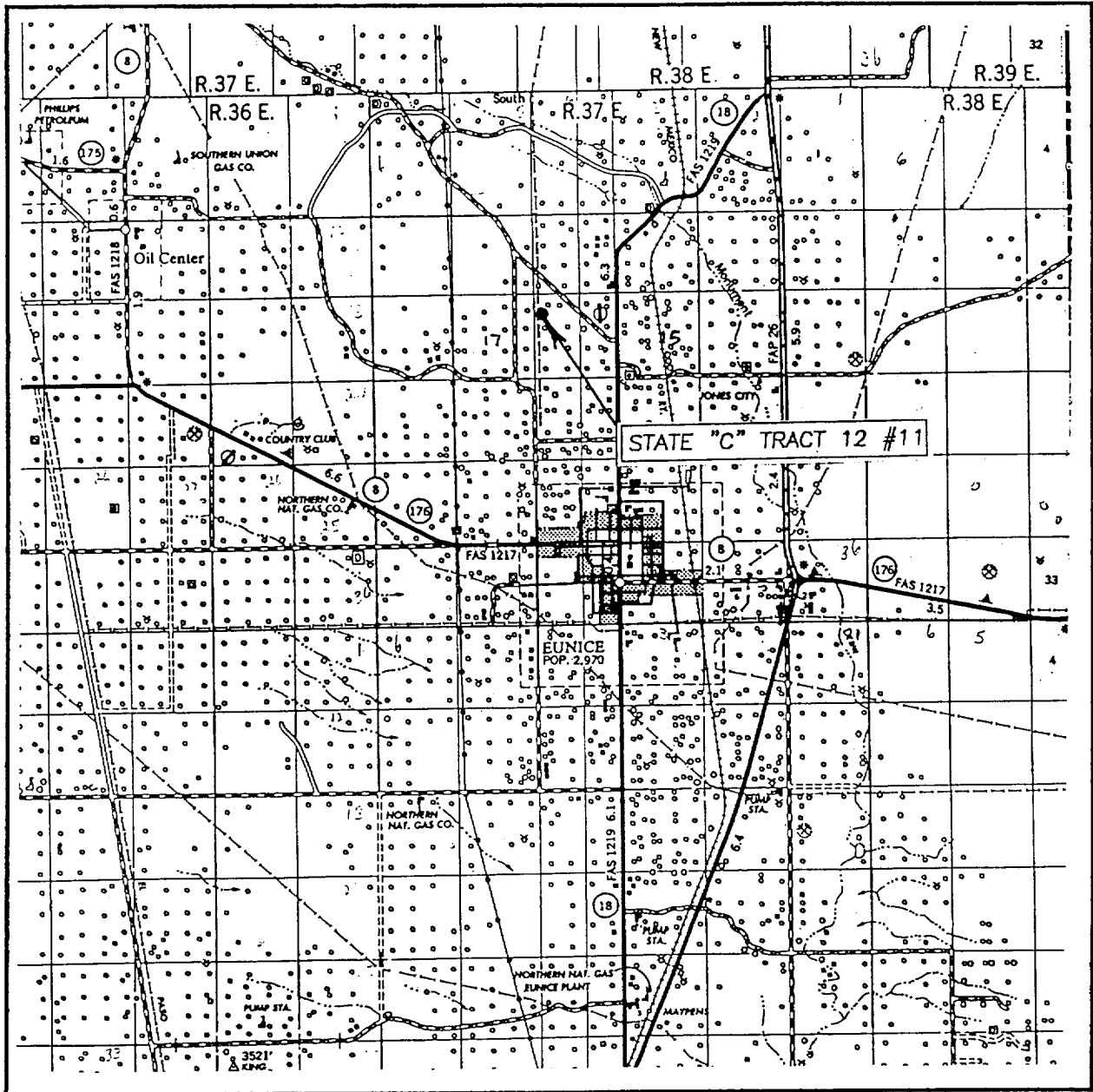
Date Surveyed AWB

Signature & Seal of Professional Surveyor

01.11.1028

Certificate No. **RONALD J. EIDSON 3239**
GARY EIDSON 12641

VICINITY MAP

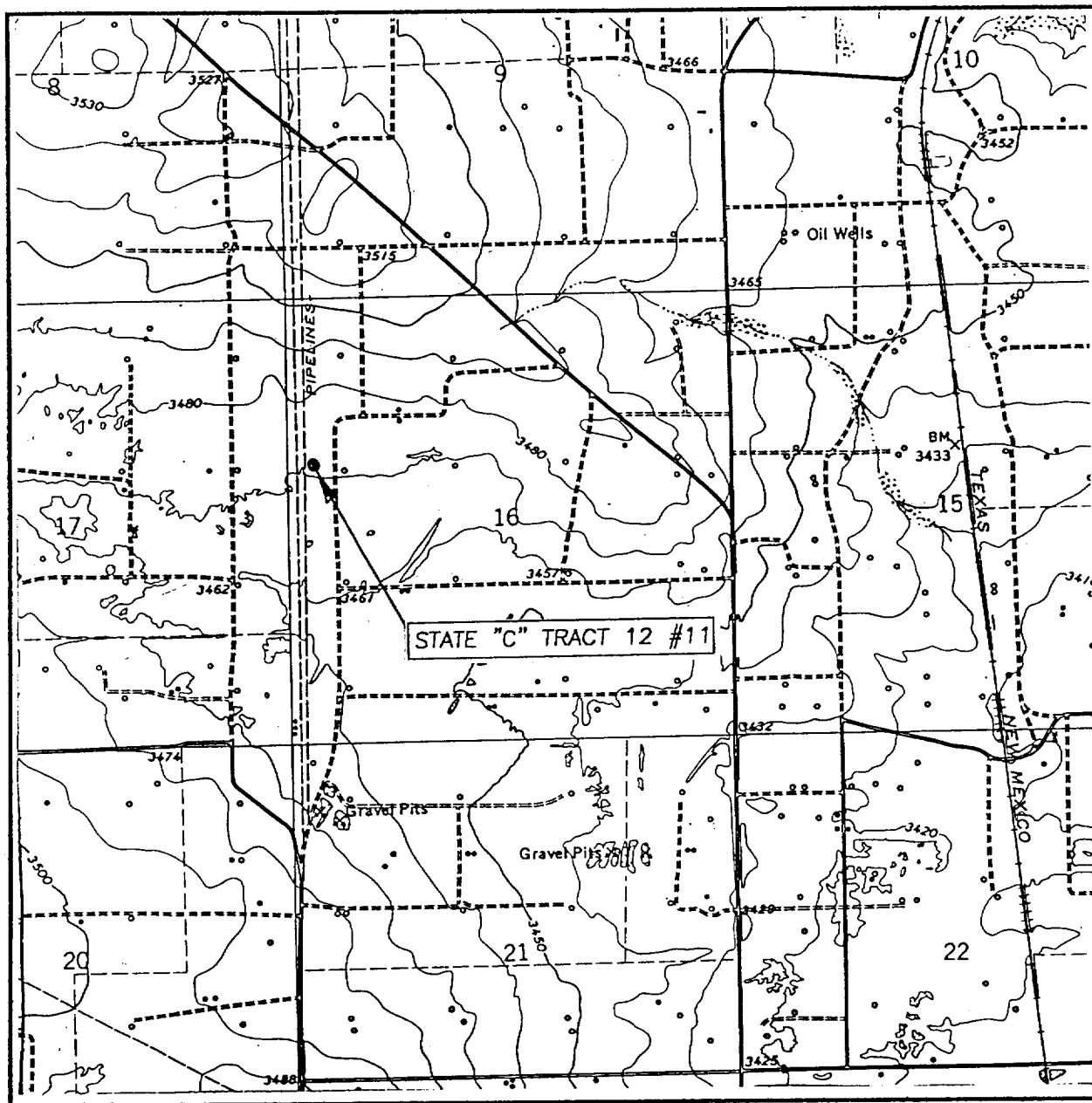


SCALE: 1" = 2 MILES

SEC. 16 TWP. 21-S RGE. 37-E
 SURVEY N.M.P.M.
 COUNTY LEA
 DESCRIPTION 1980' FNL & 330' FWL
 ELEVATION 3478'
 OPERATOR APACHE CORPORATION
 LEASE STATE "C" TRACT 12

JOHN WEST SURVEYING
 HOBBS, NEW MEXICO
 (505) 393-3117

LOCATION VERIFICATION MAP



SCALE: 1" = 2000'

CONTOUR INTERVAL: 10'

EUNICE, N.M.

SEC. 16 TWP. 21-S RGE. 37-E

SURVEY N.M.P.M.

COUNTY LEA

DESCRIPTION 1980' FNL & 330' FWL

ELEVATION 3478'

OPERATOR APACHE CORPORATION

LEASE STATE "C" TRACT 12

U.S.G.S. TOPOGRAPHIC MAP

EUNICE, .NM.

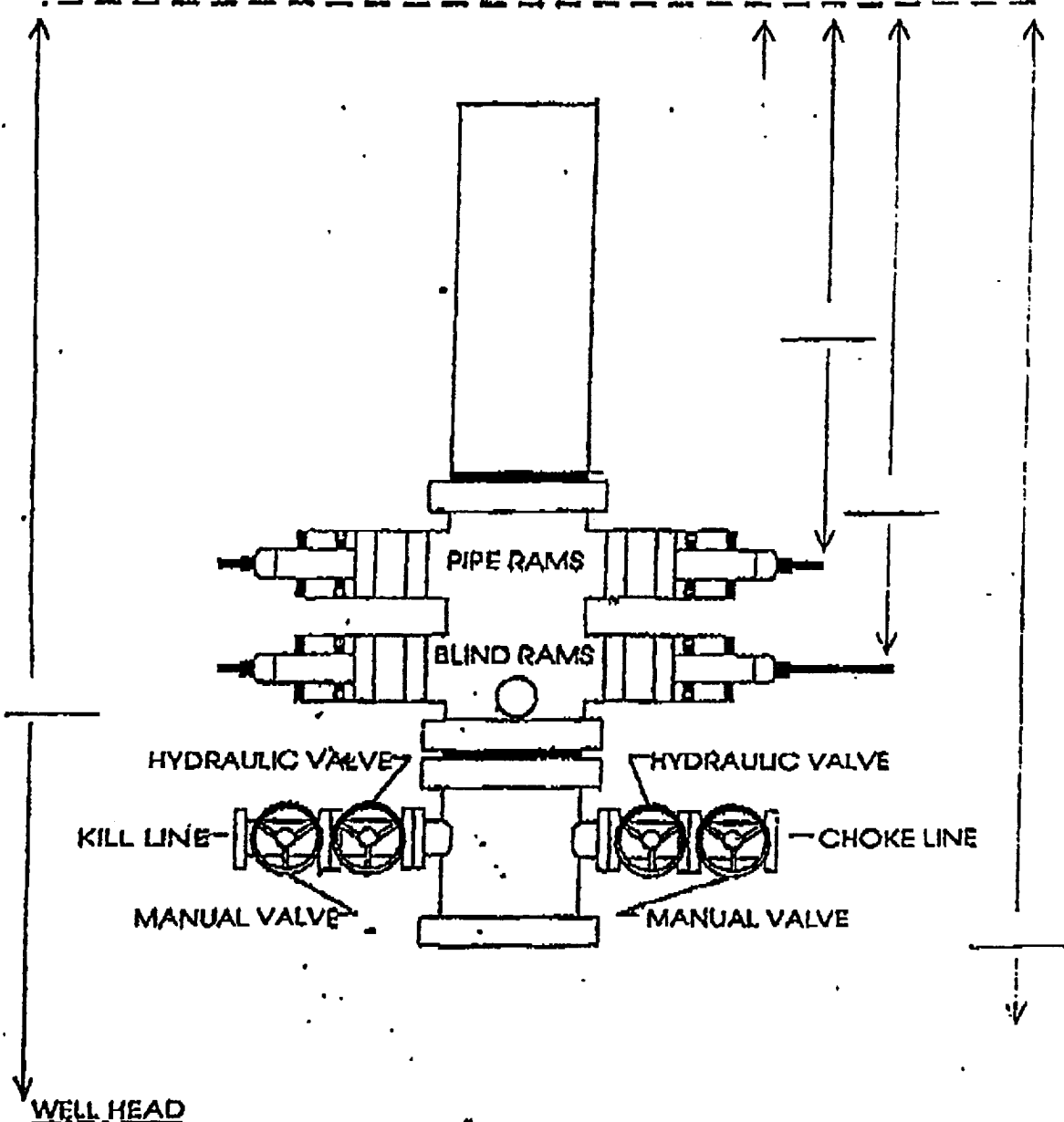
JOHN WEST SURVEYING
HOBBS, NEW MEXICO
(505) 393-3117

EXHIBIT "H-1"
B.U.P. STACK SPACING
SIZE: 11" 3000

Rig 5

AHEP-3187

TOP OF ROTARY



WELL _____ CONTRACTOR _____

ABOVE DATE DOES NOT
INDICATE WHEN
CONFIDENTIAL LOGS
WILL BE RELEASED

1/1/01 ELF