

Operator Union Texas Petroleum Corporation			Lease Buffin, No. 100			Well No. 3	
Location of Well	Unit M	Sec 19	Twp 25-S	Rge 28-E	County Lea		
Name of Reservoir or Pool			Type of Prod (Oil or Gas)	Method of Prod Flow, Art Lift	Prod. Medium (Tbg or Csg)	Choke Size	
Upper Compl	Justis (Blincy)		Oil	Pump	Tbg.		
Lower Compl	Justis (Tubb-Drinkard)		Oil	Pump	Tbg.		

FLOW TEST NO. 1

Both zones shut-in at (hour, date): 10 a.m., March 23, 1970

Well opened at (hour, date): 10 a.m., March 24, 1970

Indicate by ( X ) the zone producing..... X

Pressure at beginning of test..... 140      190

Stabilized? (Yes or No)..... Yes      Yes

Maximum pressure during test..... 140      190

Minimum pressure during test..... 25      190

Pressure at conclusion of test..... 25      190

Pressure change during test (Maximum minus Minimum)..... -115      None

Was pressure change an increase or a decrease?..... Decrease

Well closed at (hour, date): 10 a.m., March 25, 1970      Total Time On Production 2 1/2 hours

Oil Production      Gas Production

During Test: 28 bbls; Grav. 39°;      During Test 76 MCF; GOR 2,714

Remarks \_\_\_\_\_

FLOW TEST NO. 2

Well opened at (hour, date): 10 a.m., March 26, 1970

Indicate by ( X ) the zone producing..... X

Pressure at beginning of test..... 140      140

Stabilized? (Yes or No)..... Yes      Yes

Maximum pressure during test..... 170      140

Minimum pressure during test..... 140      15

Pressure at conclusion of test..... 170      15

Pressure change during test (Maximum minus Minimum)..... +30      -125

Was pressure change an increase or a decrease?..... Increase      Decrease

Well closed at (hour, date): 10 a.m., March 27, 1970      Total time on Production 2 1/2 hours

Oil Production      Gas Production

During Test: 3 bbls; Grav. 38°;      During Test 11 MCF; GOR 3,667

Remarks \_\_\_\_\_

I hereby certify that the information herein contained is true and complete to the best of my knowledge.

Approved MAY 8 1971      19      Operator Union Texas Petroleum Corporation  
New Mexico Oil Conservation Commission      By E.L. Hammond

[Signature]  
SUPERVISOR DISTRICT

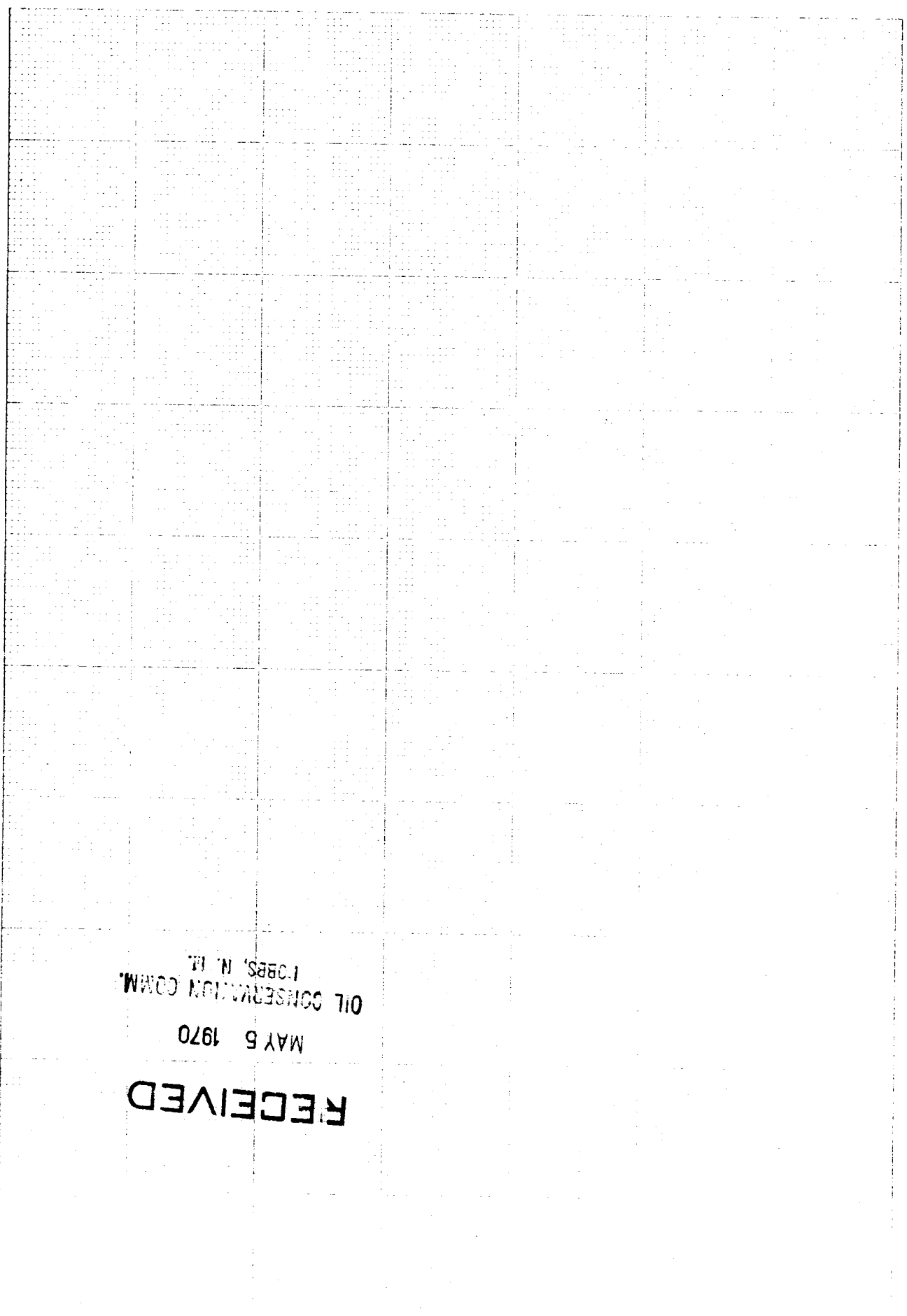
2. At least 72 hours prior to the commencement of any flow test, the operator shall notify the Commission in writing of the date, time and location of the test and shall file a copy of this notification with the Commission.

3. The paper log for the test shall contain a log for both zones of the well completion and shall include the following information: (a) The zone to be tested shall be shut-in until the flow of gas is stabilized and for a minimum of two hours thereafter, provided however, that they shall not remain shut-in more than 24 hours.

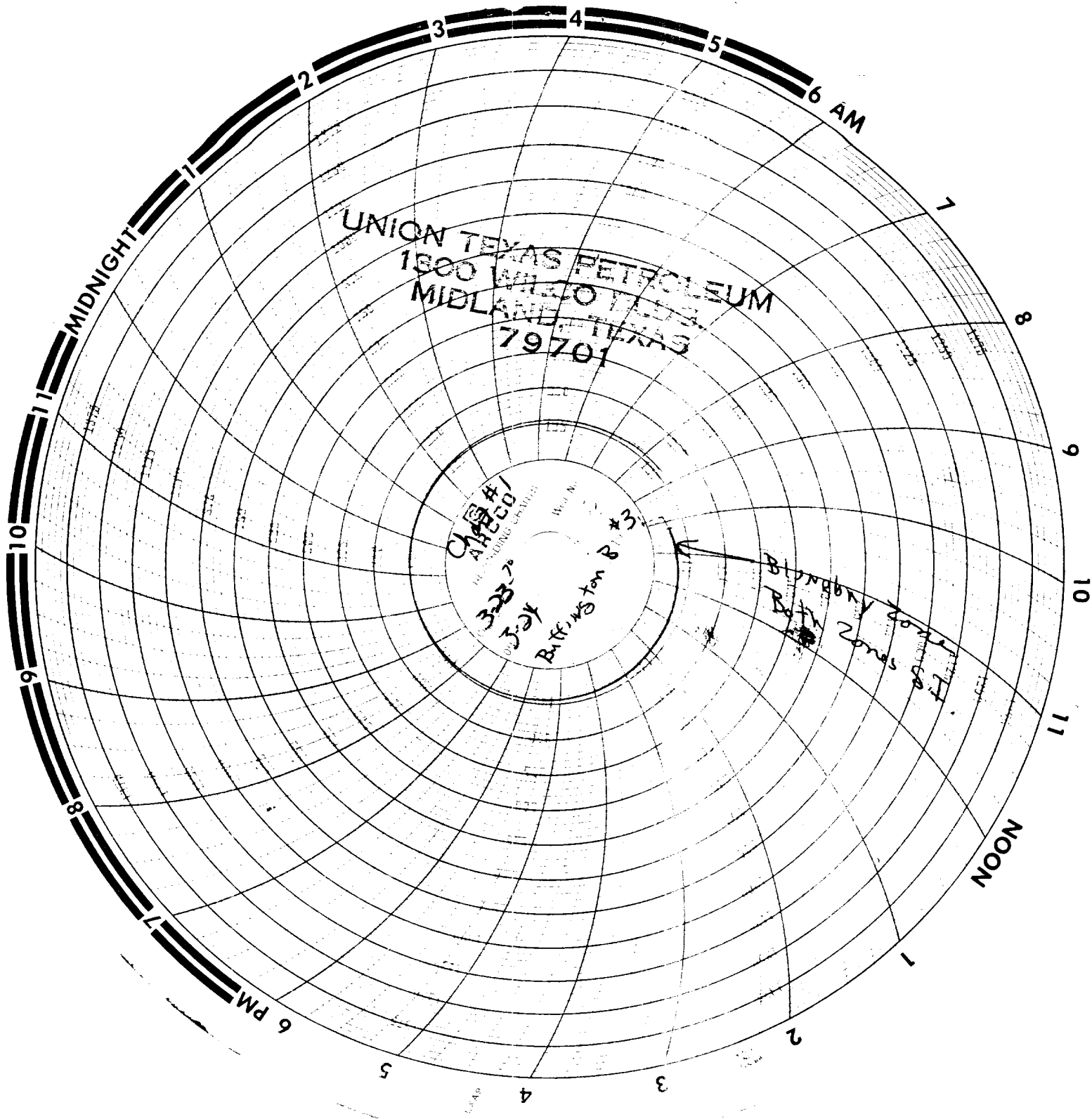
4. For flow test No. 1, one zone of the well completion shall be produced at the normal rate of production while the other zone is shut-in. Such test shall continue until the flowing wellhead pressure has become stabilized and for a minimum of two hours thereafter, provided however, that the flow test shall not continue for more than 24 hours.

The Commission shall have the right to require the operator to conduct a flow test at any time and at any location of the well completion and to require the operator to file a copy of the test log with the Commission.

5. The operator shall be responsible for the maintenance and operation of the well completion and shall be responsible for the safety of the well completion and the surrounding area. The operator shall be responsible for the safety of the well completion and the surrounding area. The operator shall be responsible for the safety of the well completion and the surrounding area. The operator shall be responsible for the safety of the well completion and the surrounding area.



OIL CONSERVATION COMM.  
MAY 5 1970  
RECEIVED  
1985, N. T.



UNION TEXAS PETROLEUM  
1300 WILCO BLDG.  
MIDLAND, TEXAS  
79701

ARCO  
Chart # 1  
on 3-23-70  
3-24-70

Burrington B #3

Tubb-Drinkard zone  
Both zones ST

12

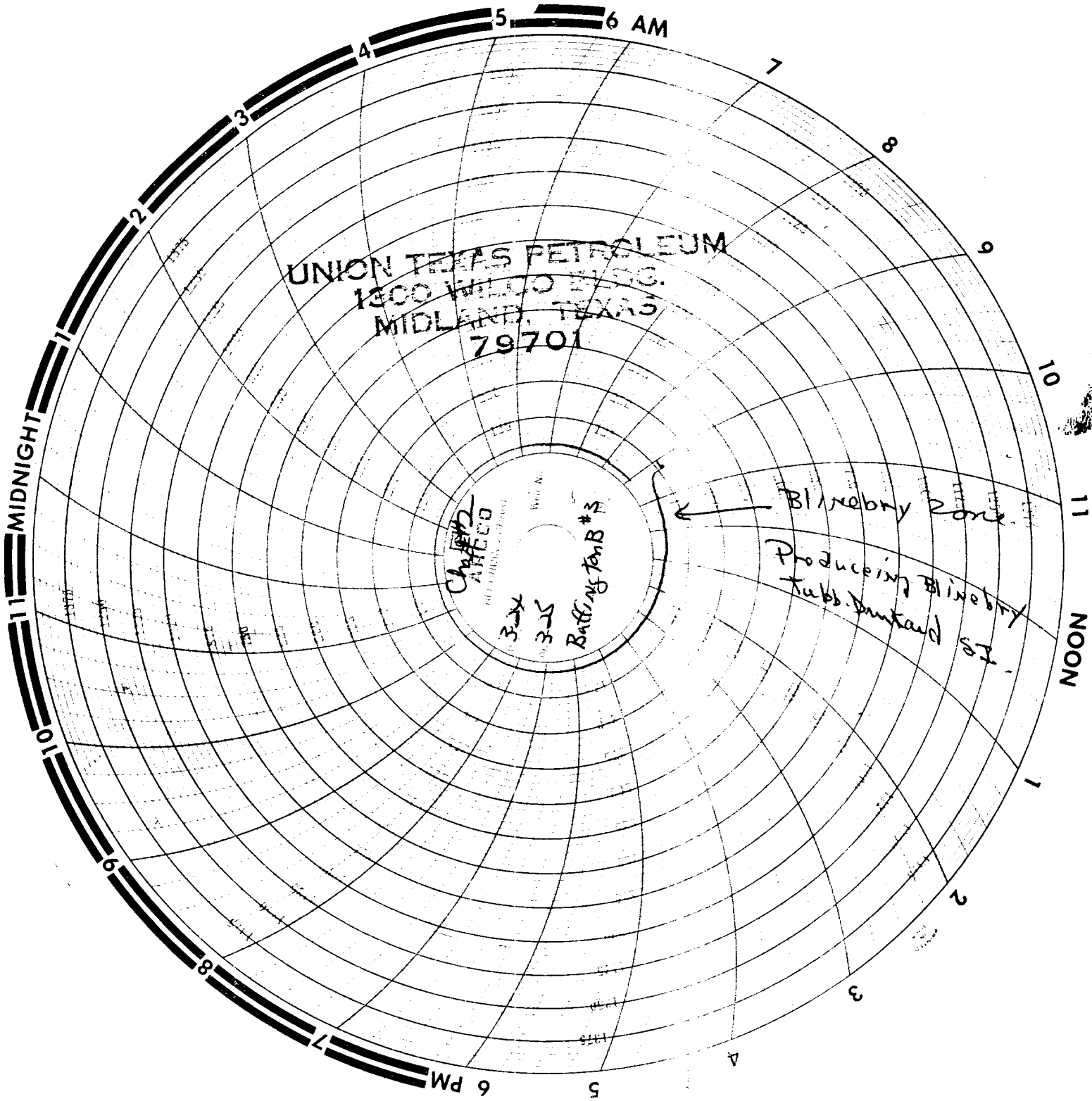
11

10

9

8

© NIGHT



UNION TEXAS PETROLEUM  
1300 WILCO BLDG.  
MIDLAND, TEXAS  
79701

CHART  
AMCCO  
3-14  
3-15  
Bluffington B #3

← Blinobry Park  
Producing Blinobry  
Tubs. painted SI.

6 DAY

UNION TEXAS PETROLEUM  
1300 WILCO BLDG.  
MIDLAND, TEXAS  
79701

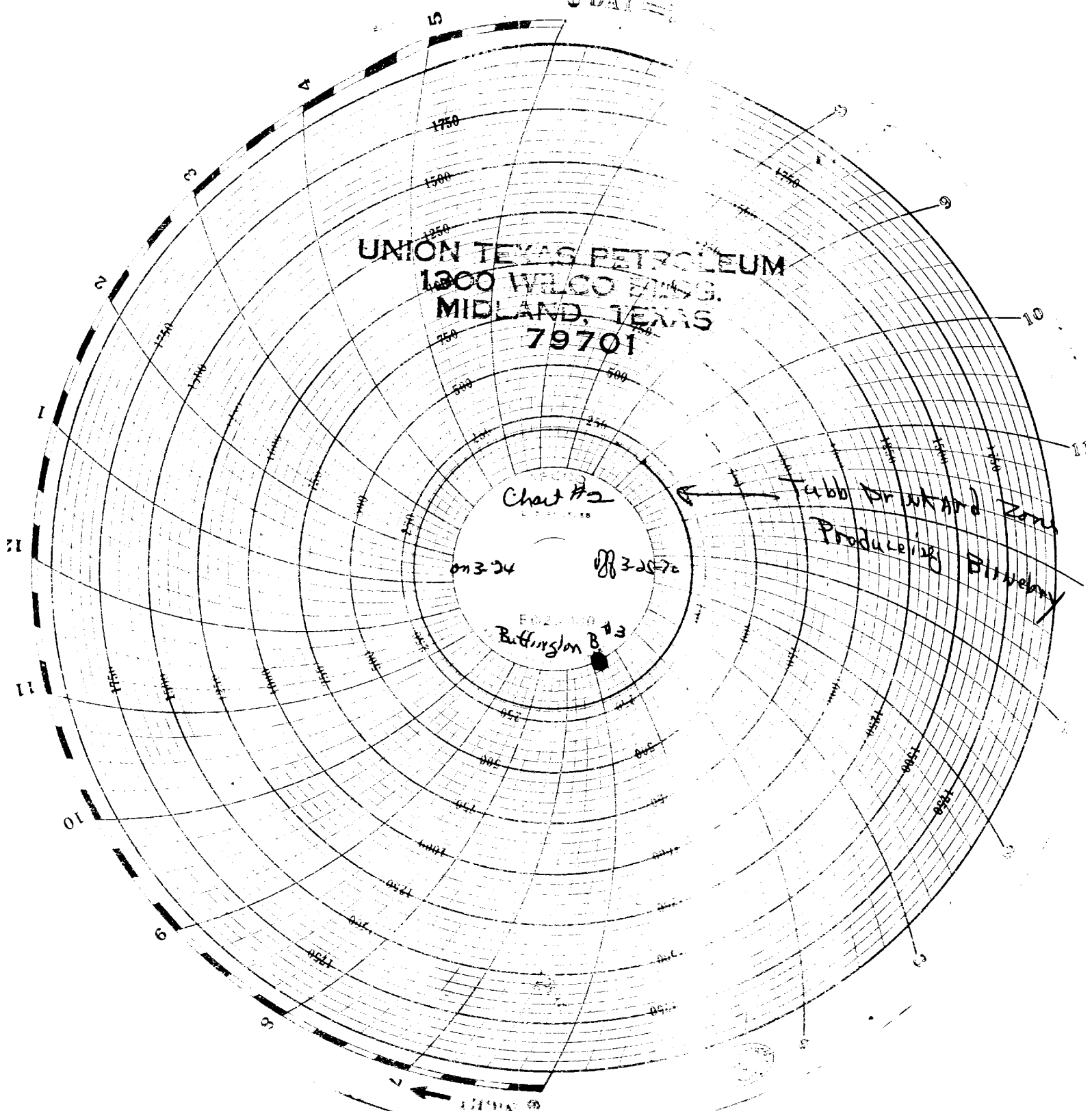
Chart #2

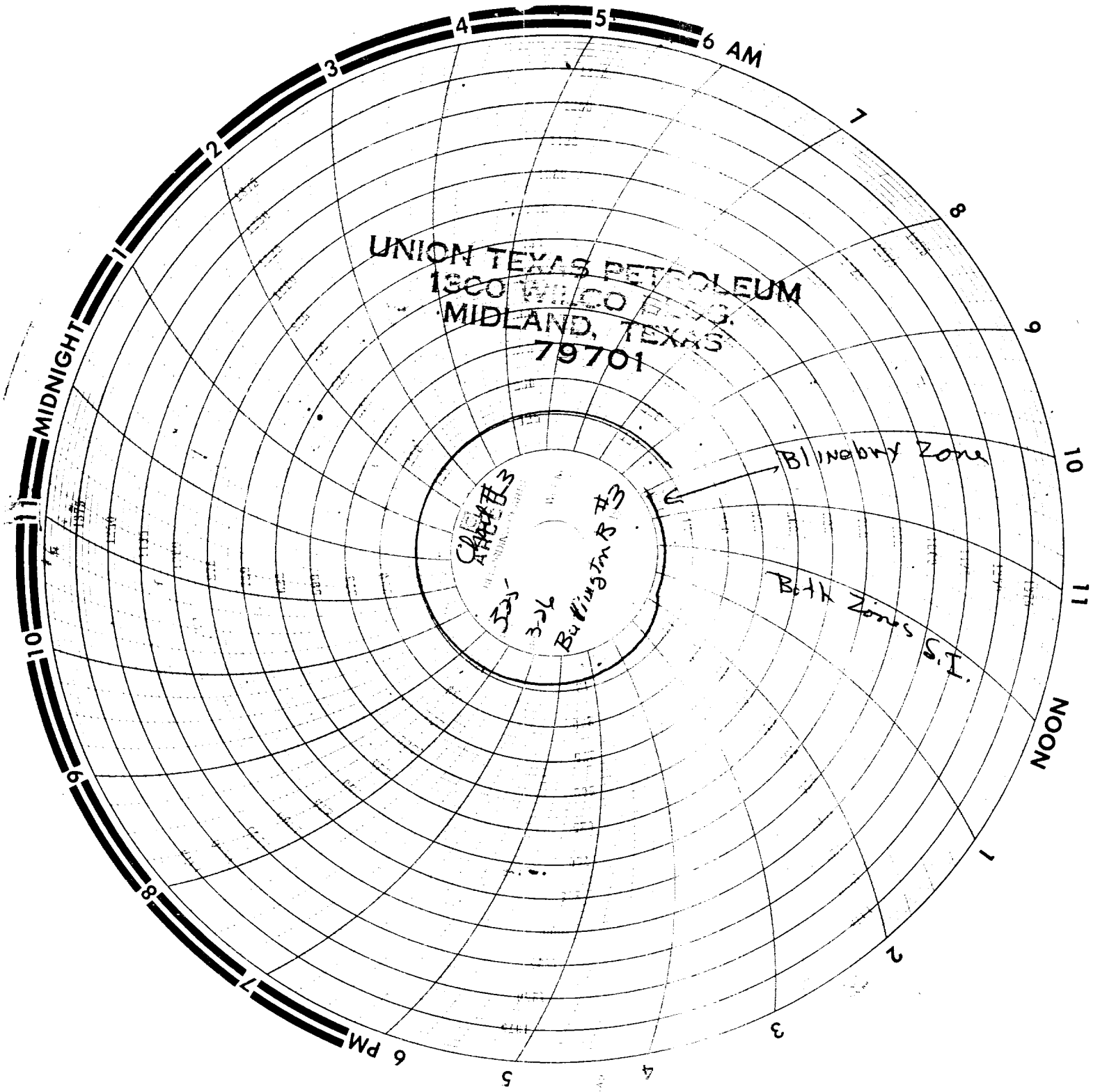
07324

0832070

Buttinson B 43

Tabb Prinkard Zone  
Producing Bitumen





UNION TEXAS PETROLEUM  
1300 WILCO BLDG.  
MIDLAND, TEXAS  
79701

325-  
326  
Burlington B #3

Blinabny Zone

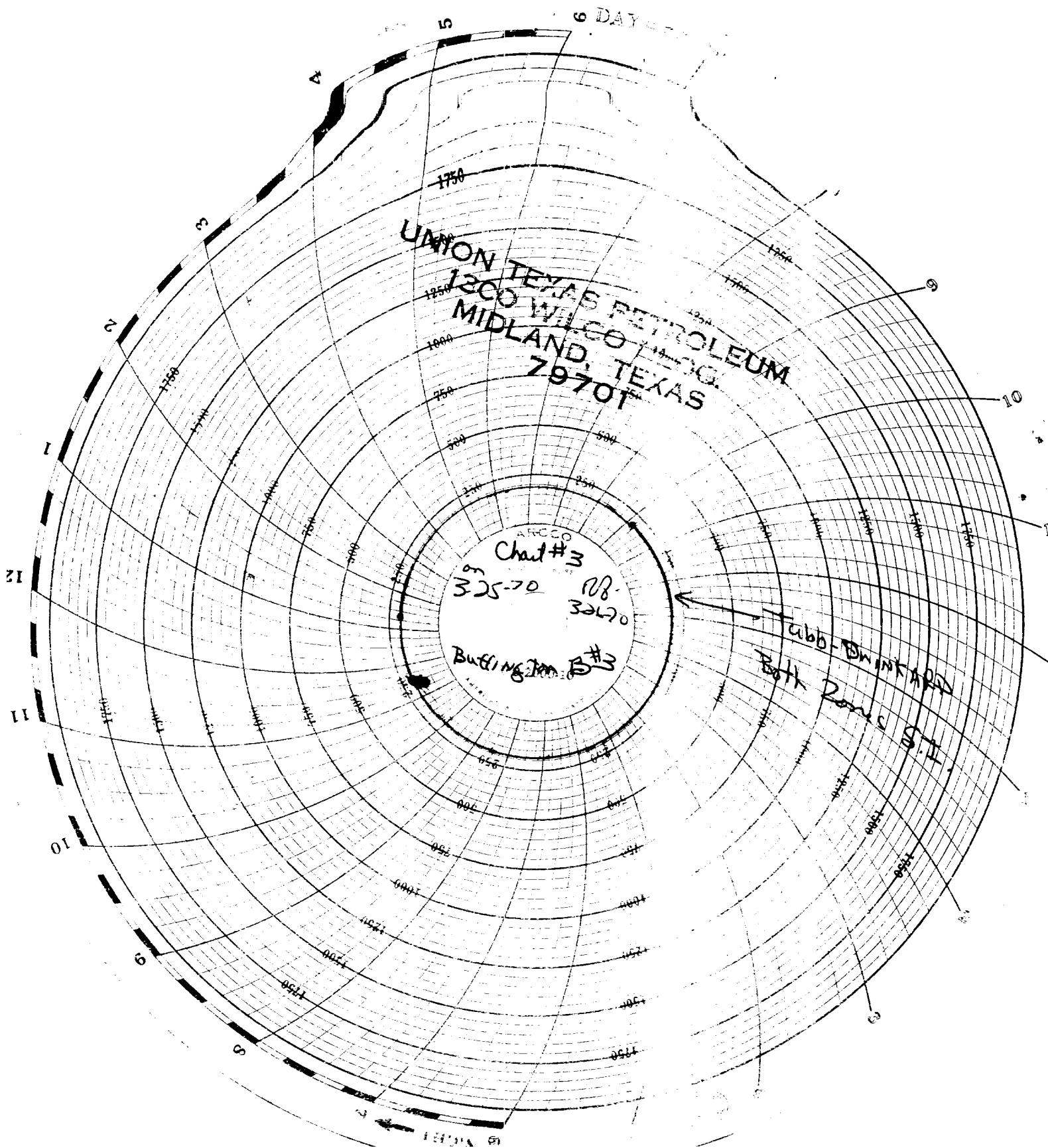
Both Zones  
I.S.I.

NOON

6 PM

MIDNIGHT

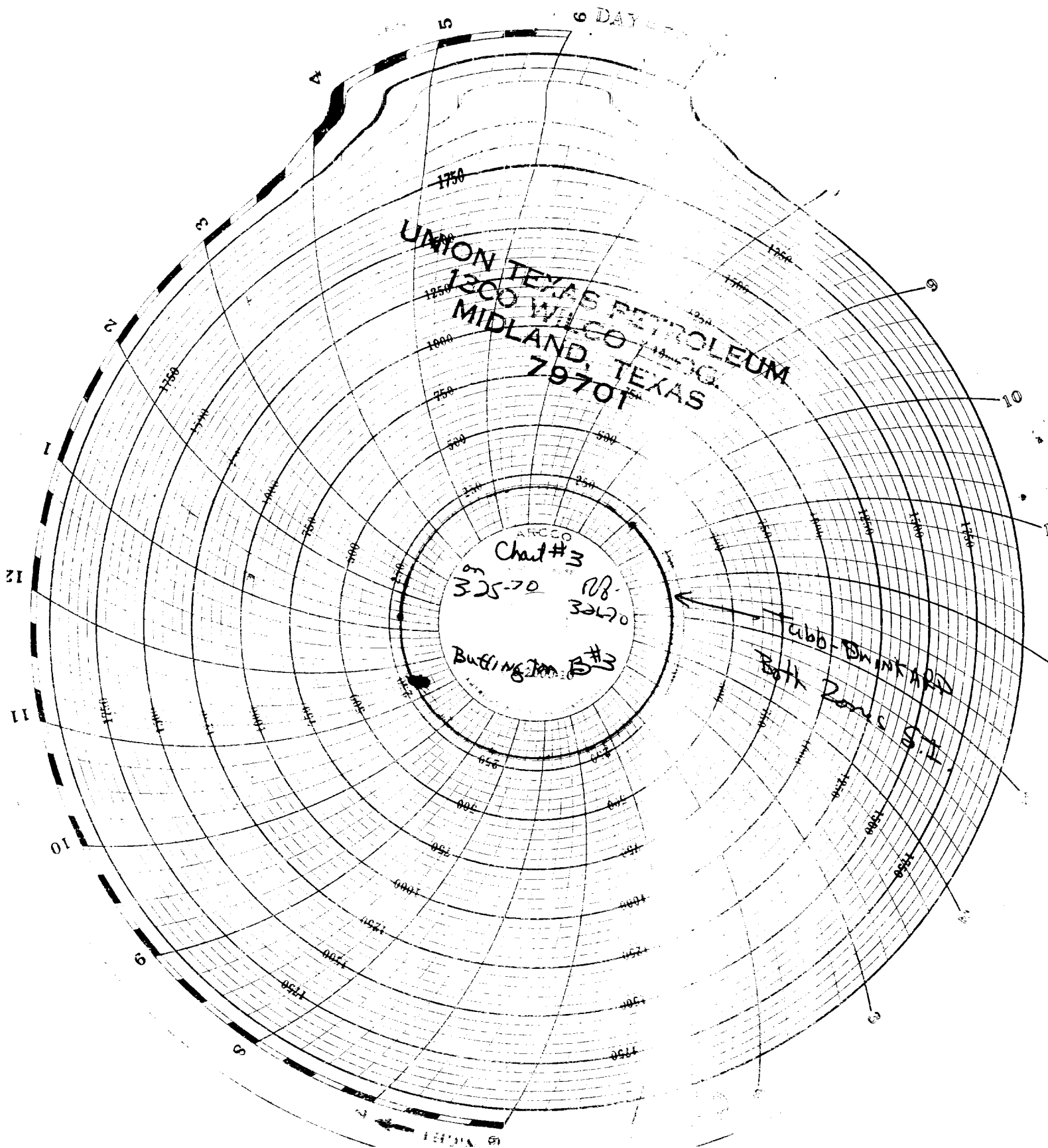
6 AM



UNION TEXAS PETROLEUM  
1200 WILCO  
MIDLAND, TEXAS 79701

ARCCO  
Chart #3  
325-70 108-32470  
Buttington B#3

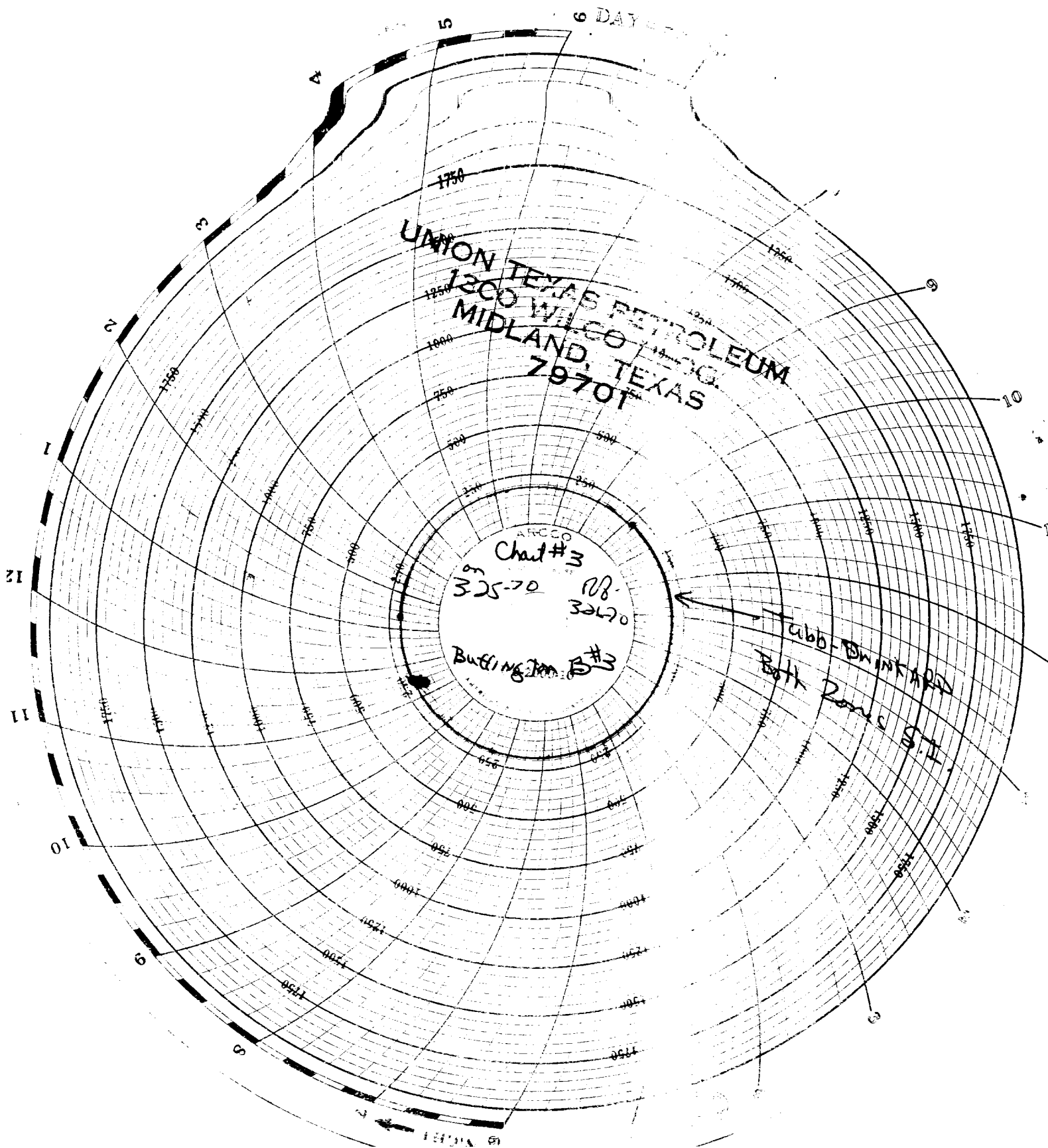
Tubb-Dwinkard  
Both Parts of



UNION TEXAS PETROLEUM  
1200 WILCO  
MIDLAND, TEXAS 79701

ARCCO  
Chart #3  
325-70 108-32470  
Buttington B#3

Tubb-Dwinkard  
Both Parts of

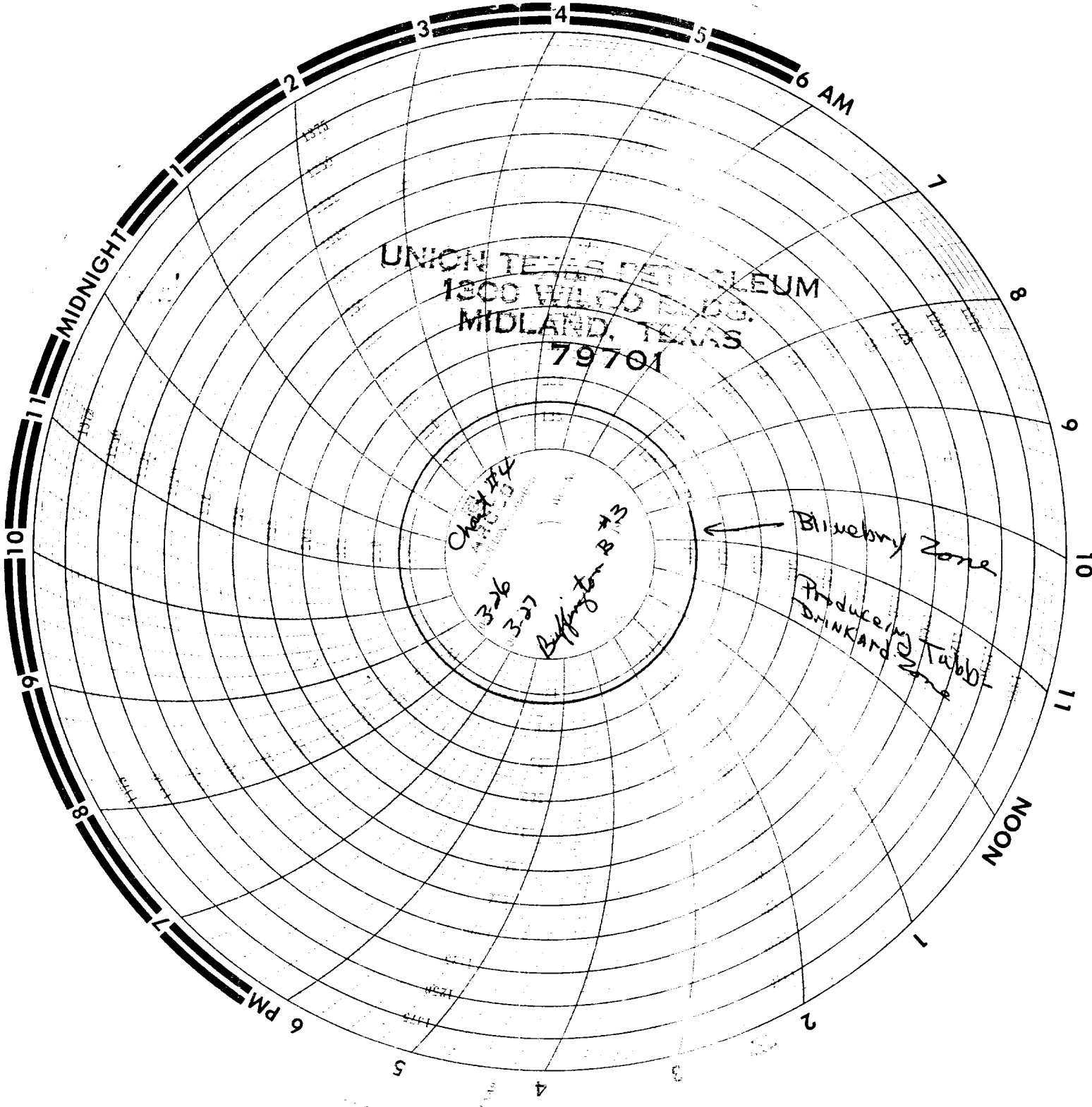


UNION TEXAS PETROLEUM  
1200 WILCO  
MIDLAND, TEXAS 79701

ARCCO  
Chart #3  
325-70 108-32470  
Buttington B#3

Tubb-Dwinkard  
Both Parts of



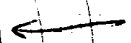


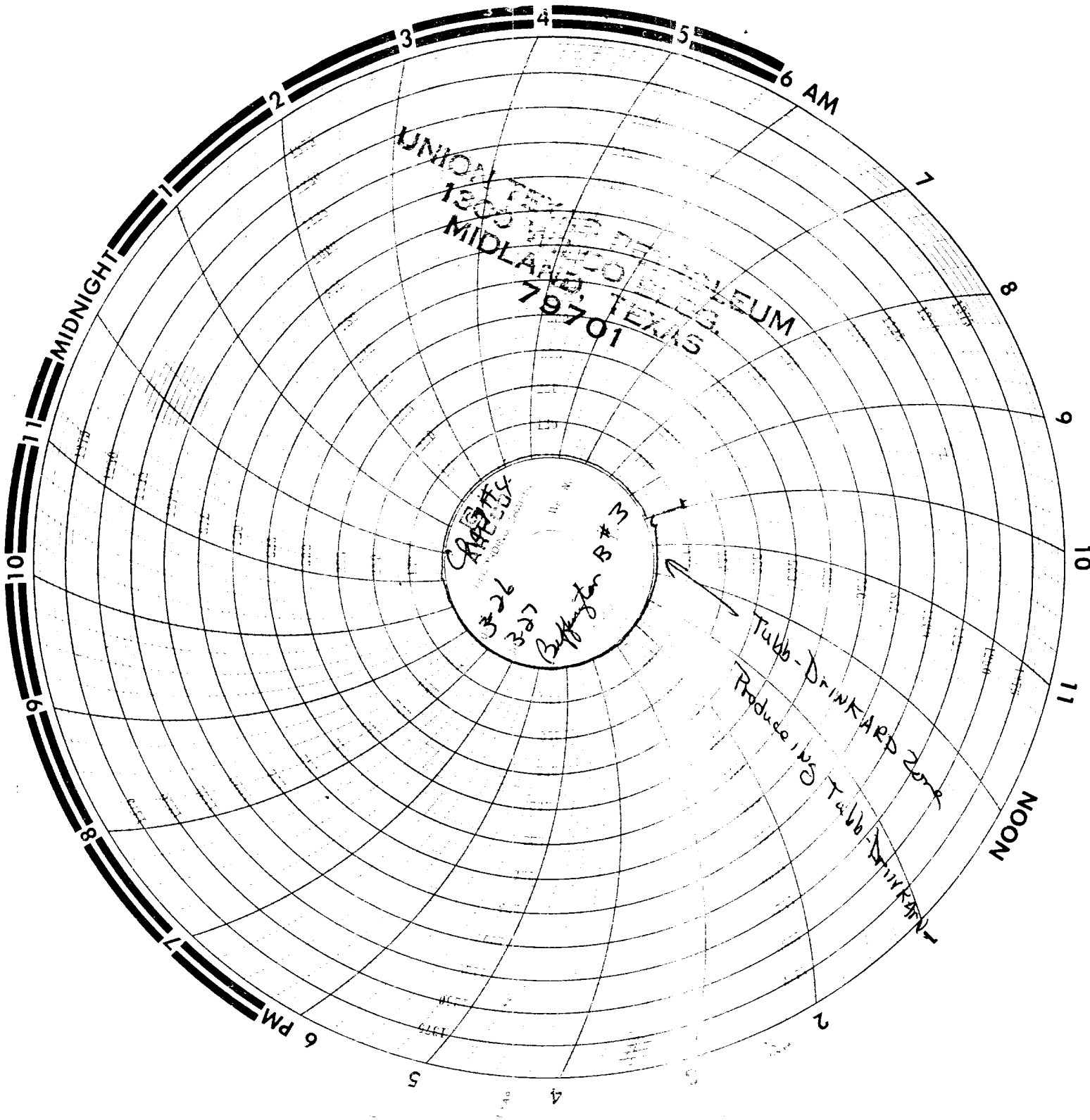
UNION TEXAS PETROLEUM  
1800 WILCO DR. BLDG.  
MIDLAND, TEXAS  
79701

Chart #4  
3-26  
3-27  
Buffington B #3

Blueberry Zone

Producing  
DRINKARD  
Stubb





UNION  
1300  
MIDLAND, TEXAS  
79701

CAFFERTY  
3#26  
3#27  
Buckington B#3

Tubb-Drinkard zone  
Produce is Tubb Drinkard