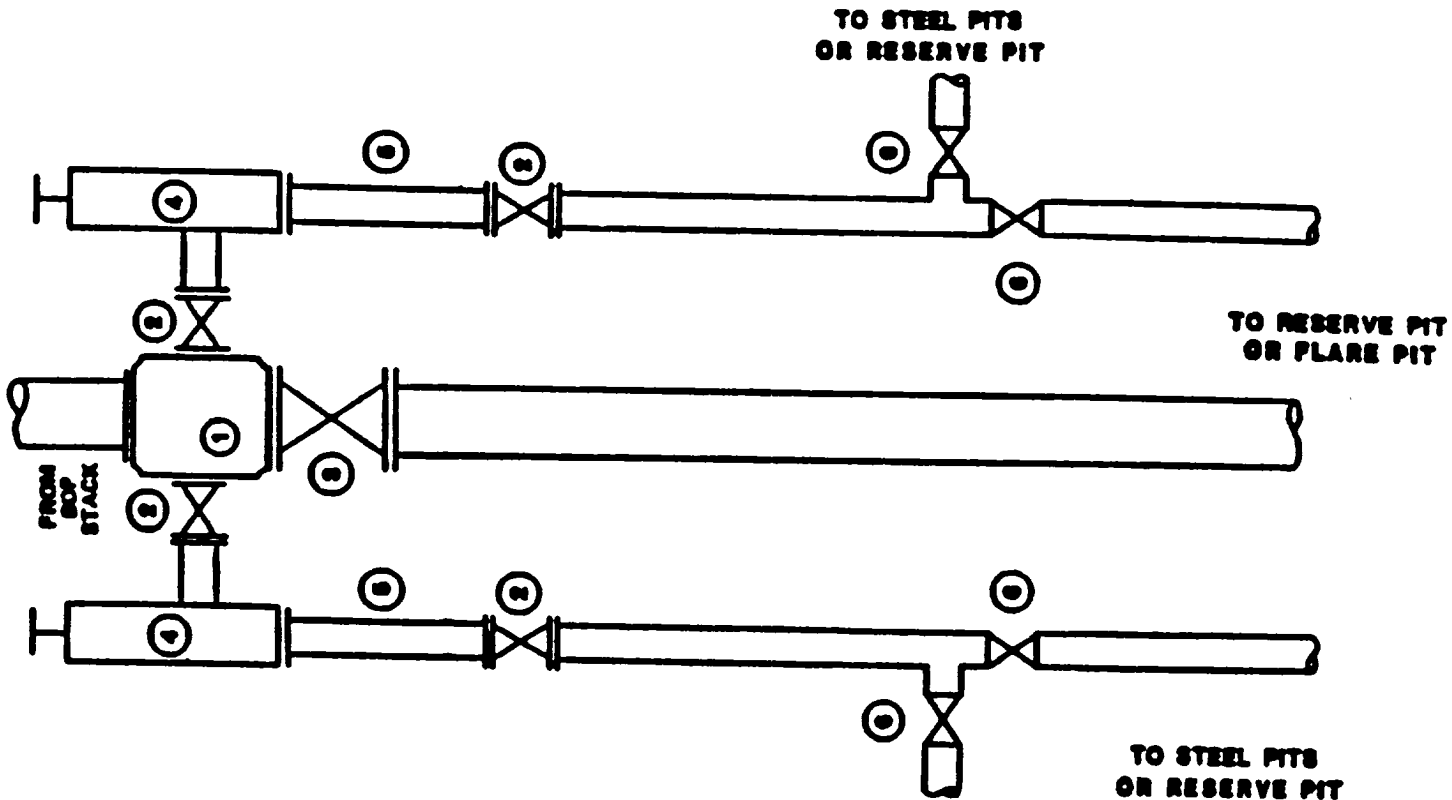


## TYPE- 4 CHOKE MANIFOLD

TO BE USED ON  
PRODUCTION HOLE



### COMPONENT SPECIFICATIONS Type 4 CHOKE Manifold

1. Flanged or studed cross 3" x 3" x 2" x 2" minimum nominal diameter with blind flange and equipped with needle valve for pressure gauge.
2. Flanged plug or gate valve -- 2" minimum nominal diameter - valve to have same working pressure rating as choke.
3. Flanged plug or gate valve -- 3" minimum nominal diameter -- valve to have same working pressure rating as choke.
4. Flanged manually - adjustable choke equipped with tungsten carbide stems and seats and at least 3/4" orifice opening.
5. Flanged spacer spool -- 2" minimum nominal diameter and approximately 18" length.
6. Screwed plug or gate valve -- 2" minimum nominal diameter.