

Appropriate Office
 Lease - 4 copies
 Lease - 3 copies

OIL CONSERVATION DIVISION
 P.O. Box 2088
 Santa Fe, New Mexico 87504-2088

DISTRICT I
 P.O. Box 1980, Hobbs, NM 88240

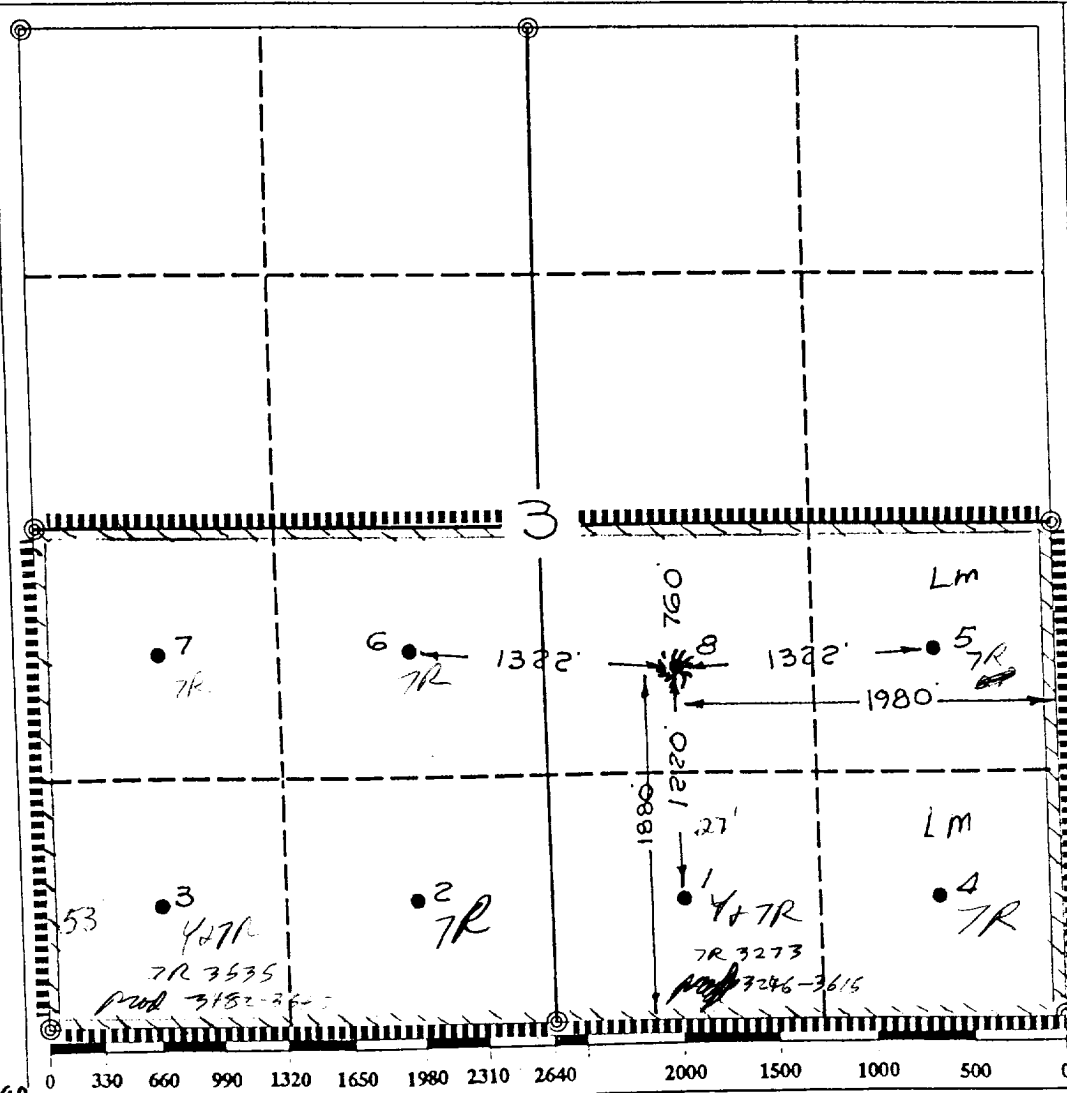
DISTRICT II
 P.O. Drawer DD, Artesia, NM 88210

DISTRICT III
 1000 Rio Brazos Rd., Aztec, NM 87410

WELL LOCATION AND ACREAGE DEDICATION PLAT
 All Distances must be from the outer boundaries of the section

Operator TEXACO PRODUCING INC.		Lease EUGENE COATS		Well No. 8
Unit Letter J	Section 3	Township 24-South	Range 36-East	County Lea
Actual Footage Location of Well: 1980 feet from the East line and 1880 feet from the South line				
Ground level Elev. 3387	Producing Formation Upper Jalmat	Pool Jalmat Pool		Dedicated Acreage: 320 Acres

1. Outline the acreage dedicated to the subject well by colored pencil or hatchure marks on the plat below.
2. If more than one lease is dedicated to the well, outline each and identify the ownership thereof (both as to working interest and royalty).
3. If more than one lease of different ownership is dedicated to the well, have the interest of all owners been consolidated by communitization, unitization, force-pooling, etc.?
 Yes No If answer is "yes" type of consolidation _____
 If answer is "no" list the owners and tract descriptions which have actually been consolidated. (Use reverse side of this form if necessary).
 No allowable will be assigned to the well until all interests have been consolidated (by communitization, unitization, forced-pooling, or otherwise) or until a non-standard unit, eliminating such interest, has been approved by the Division.



OPERATOR CERTIFICATION
 I hereby certify that the information contained herein is true and complete to the best of my knowledge and belief.

Signature: *Royce D. Mariott*
 Printed Name: Royce D. Mariott
 Position: Div. Surveyor
 Company: TEXACO PRODUCING INC.
 Date: Dec. 4, 1989

SURVEYOR CERTIFICATION
 I hereby certify that the well location shown on this plat was plotted from field notes of actual surveys made by me or under my supervision, and that the same is true and correct to the best of my knowledge and belief.

Date Surveyed: Nov. 29, 1989
 Signature & Seal of Professional Surveyor: *John S. Piper*
 Certificate No. 7254
 John S. Piper

3-15-90 #3 ↓ #1 have some perf in yates but these wells are water wells for jal water system + no problem with a Jalmat gas well dedicated to same acreage - NO perf overlap. CK'd out by Paul Kautz - OGD, geol.