

Submit to Appropriate District Office
State Lease - 6 copies
Fee Lease - 5 copies

State of New Mexico
Energy, Minerals and Natural Resources Department

Form C-101
Revised 1-1-89

OIL CONSERVATION DIVISION
P.O. Box 2088
Santa Fe, New Mexico 87504-2088

DISTRICT I
P.O. Box 1980, Hobbs, NM 88240

DISTRICT II
P.O. Drawer DD, Artesia, NM 88210

DISTRICT III
1000 Rio Brazos Rd., Aztec, NM 87410

API NO. (assigned by OCD on New Wells)	30-025-31201
5. Indicate Type of Lease	STATE <input type="checkbox"/> FEE <input checked="" type="checkbox"/>
6. State Oil & Gas Lease No.	313721

APPLICATION FOR PERMIT TO DRILL, DEEPEN, OR PLUG BACK

1a. Type of Work: DRILL <input checked="" type="checkbox"/> RE-ENTER <input type="checkbox"/> DEEPEN <input type="checkbox"/> PLUG BACK <input type="checkbox"/>	7. Lease Name or Unit Agreement Name B. F. HARRISON -B-
b. Type of Well: OIL WELL <input checked="" type="checkbox"/> GAS WELL <input type="checkbox"/> OTHER <input type="checkbox"/> SINGLE ZONE <input checked="" type="checkbox"/> MULTIPLE ZONE <input type="checkbox"/>	8. Well No. 5
2. Name of Operator TEXACO PRODUCING INC.	9. Pool name or Wildcat TEAGUE NORTH ELLENBURGER
3. Address of Operator P. O. Box 3109, Midland, Texas 79702	
4. Well Location Unit Letter <u>E</u> : <u>1950</u> Feet From The <u>NORTH</u> Line and <u>560</u> Feet From The <u>WEST</u> Line Section <u>9</u> Township <u>23-SOUTH</u> Range <u>37-EAST</u> NMPM LEA County	

10. Proposed Depth 10575'	11. Formation ELLENBURGER	12. Rotary or C.T. R
13. Elevations (Show whether DF, RT, GR, etc.) GR-3316'	14. Kind & Status Plug. Bond BLANKET	15. Drilling Contractor
		16. Approx. Date Work will start 05-01-91

17. PROPOSED CASING AND CEMENT PROGRAM

SIZE OF HOLE	SIZE OF CASING	WEIGHT PER FOOT	SETTING DEPTH	SACKS OF CEMENT	EST. TOP
22 1/2	18 5/8	87.5#	40'	REDI-MIX	SURFACE
17 1/2	13 3/8	54.5#	1180'	1100	SURFACE
12 1/4	9 5/8	40#	3750'	1450	SURFACE
8 3/4	5 1/2	17#	10575'	2250	SURFACE

THERE ARE NO OTHER OPERATORS IN THIS QUARTER/QUARTER SECTION.
CEMENTING PROGRAM: CONDUCTOR - REDI-MIX
SURFACE - 900 SACKS CLASS H w/ 2% GEL & 2% CaCl2 (14.7ppg, 1.36f3/s, 6.5gw/s). F/B 200 SACKS CLASS H w/ 2% CaCl2 (15.6ppg, 1.19f3/s, 5.2gw/s).
INTERMEDIATE - 1st STAGE: 900 SACKS 50/50 POZ CLASS H w/ 2% GEL & 5% SALT (14.25ppg, 1.28f3/s, 5.75gw/s). F/B 250 SACKS CLASS H w/ 2% CaCl2 (15.6ppg, 1.19f3/s, 5.2gw/s). 2nd STAGE: DV TOOL @ 1250'. 300 SACKS CLASS H w/ 2% CaCl2 (15.6ppg, 1.19f3/s, 5.2gw/s).
PRODUCTION - 1st STAGE: 900 SACKS 35/65 POZ CLASS H w/ 6% GEL, 5% SALT & 1/4# FLOCELE (12.8ppg, 1.87f3/s, 9.9gw/s). F/B 250 SACKS CLASS H w/ 1/4# FLOCELE & 0.6% HALAD-9 (15.6ppg, 1.18f3/s, 5.2gw/s). 2nd STAGE: DV TOOL @ 7000'. 1100 SACKS 35/65 POZ CLASS H w/ 6% GEL, 5% SALT & 1/4# FLOCELE (12.8ppg, 1.87f3/s, 9.9gw/s).

IN ABOVE SPACE DESCRIBE PROPOSED PROGRAM: IF PROPOSAL IS TO DEEPEN OR PLUG BACK, GIVE DATA ON PRESENT PRODUCTIVE ZONE AND PROPOSED NEW PRODUCTIVE ZONE. GIVE BLOWOUT PREVENTER PROGRAM, IF ANY.

I hereby certify that the information above is true and complete to the best of my knowledge and belief.

SIGNATURE C. Wade Howard TITLE ENGINEERING ASSISTANT DATE 03-20-91

TYPE OR PRINT NAME C. WADE HOWARD TELEPHONE NO. 915-688-4606

(This space for State Use)

APPROVED BY _____ TITLE _____ DATE _____

CONDITIONS OF APPROVAL, IF ANY:

Submit to Appropriate
District Office
State Lease - 4 copies
Fee Lease - 3 copies

State of New Mexico
Energy, Minerals and Natural Resources Department

Form C-102
Revised 1-1-89

OIL CONSERVATION DIVISION

DISTRICT I
P.O. Box 1980, Hobbs, NM 88240

P.O. Box 2088

Santa Fe, New Mexico 87504-2088

DISTRICT II
P.O. Drawer DD, Artesia, NM 88210

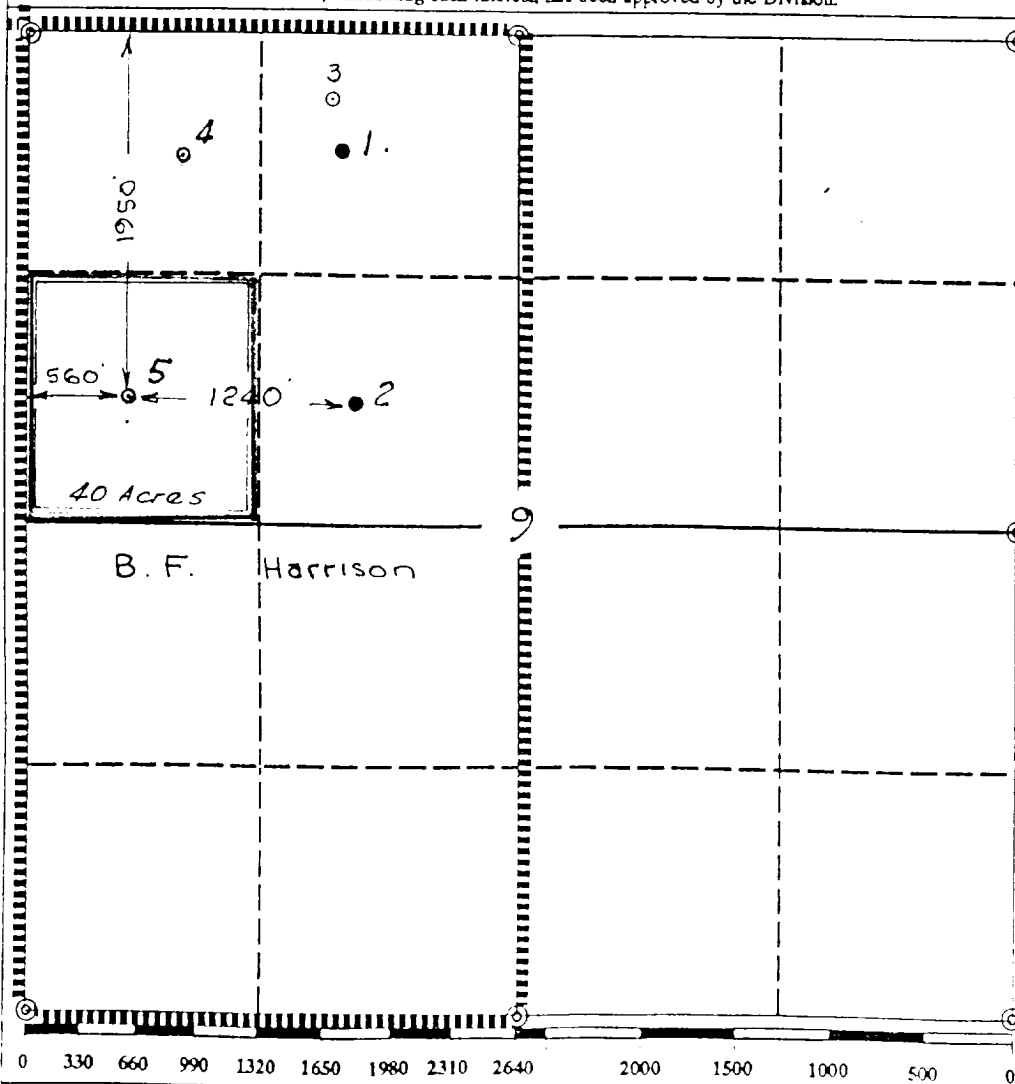
DISTRICT III
1000 Rio Brazos Rd., Aztec, NM 87410

WELL LOCATION AND ACREAGE DEDICATION PLAT

All Distances must be from the outer boundaries of the section

Operator TEXACO PRODUCING INC.			Lease B. F. Harrison "B"		Well No. 5
Unit Letter E	Section 9	Township 23-South	Range 37-East	County Lea	
Actual Footage Location of Well:					
1950 feet from the North line and		560 feet from the West line			
Ground level Elev. 3316	Producing Formation Ellenburger	Pool Teague North Ellenburger		Dedicated Acreage: 40 Acres	

- Outline the acreage dedicated to the subject well by colored pencil or hachure marks on the plat below.
- If more than one lease is dedicated to the well, outline each and identify the ownership thereof (both as to working interest and royalty).
- If more than one lease of different ownership is dedicated to the well, have the interest of all owners been consolidated by communitization, unitization, force-pooling, etc.?
 Yes No If answer is "yes" type of consolidation _____
 If answer is "no" list the owners and tract descriptions which have actually been consolidated. (Use reverse side of this form if necessary).
 No allowable will be assigned to the well until all interests have been consolidated (by communitization, unitization, forced-pooling, or otherwise) or until a non-standard unit, eliminating such interest, has been approved by the Division.



OPERATOR CERTIFICATION

I hereby certify that the information contained herein is true and complete to the best of my knowledge and belief.

Signature
Royce D. Mariott

Printed Name
Royce D. Mariott

Position
Division Surveyor

Company
Texaco Producing Inc.

Date
March 15, 1991

SURVEYOR CERTIFICATION

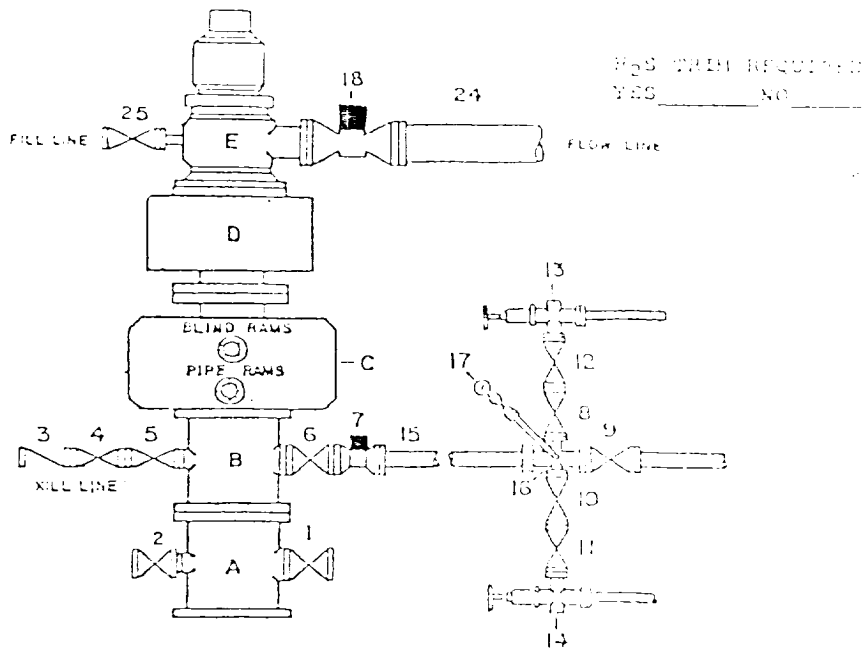
I hereby certify that the well location shown on this plat was plotted from field notes of actual surveys made by me or under my supervision, and that the same is true and correct to the best of my knowledge and belief.

Date Surveyed
March 7, 1991

Signature & Seal of Professional Surveyor
John S. Piper

Certificate No. 7254
John S. Piper

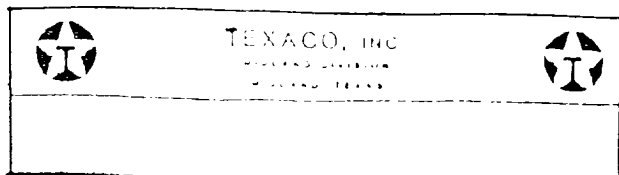
DRILLING CONTROL
CONDITION IV-6-5000 PSI WP



DRILLING CONTROL

MATERIAL LIST - CONDITION IV - 2

- A Texaco Wellhead
- B 5000# W.P. drilling spool with a minimum 1" flanged outlet for kill line and 1" minimum flanged outlet for choke line.
- C 5000# W.P. Dual ram type preventer, hydraulic operated with 1" steel, 5000# W.P. control lines.
- D 5000# W.P. Annular preventer, hydraulic operated with 1" steel, 5000# W.P. control lines.
- E Rotating Head with fill up outlet and extended Bore line.
- 1, 2, 4, 5, 8, 10, 11, 12 2" minimum 5000# W.P. flanged full opening steel gate valve, or Halliburton Lo Torc Plug valve.
- 3 2" minimum 5000# W.P. back pressure valve.
- 6, 9 1" minimum 5000# W.P. flanged full opening steel gate valve, or Halliburton Lo Torc Plug valve.
- 7 1" minimum 5000# W.P. flanged hydraulic valve
- 15 1" minimum Schedule 160, Grade B, seamless line pipe
- 16 2" minimum x 1" 5000# W.P. flanged cross
- 13, 14 2" minimum 5000# W.P. adjustable chokes with carbide trim.
- 17 Cameron Mud Gauge or equivalent (location in choke line optional).
- 18 6" minimum 1000# hydraulic flanged valve.
- 24 4" minimum steel flow line.
- 25 2" minimum 5000# W.P. flanged or threaded full opening steel gate valve, or Halliburton Lo Torc Plug valve.



16 22 4 8 25 4

173

16 22 4 8 25 4