

Submit to Appropriate District Office  
 State Lease - 4 copies  
 Fee Lease - 3 copies

State of New Mexico  
 Energy, Minerals and Natural Resources Department

Form C-102  
 Revised 1-1-89

OIL CONSERVATION DIVISION

P.O. Box 2088  
 Santa Fe, New Mexico 87504-2088

DISTRICT I  
 P.O. Box 1980, Hobbs, NM 88240

DISTRICT II  
 P.O. Drawer DD, Artesia, NM 88210

DISTRICT III  
 1000 Rio Brazos Rd., Aztec, NM 87410

WELL LOCATION AND ACREAGE DEDICATION PLAT

All Distances must be from the outer boundaries of the section

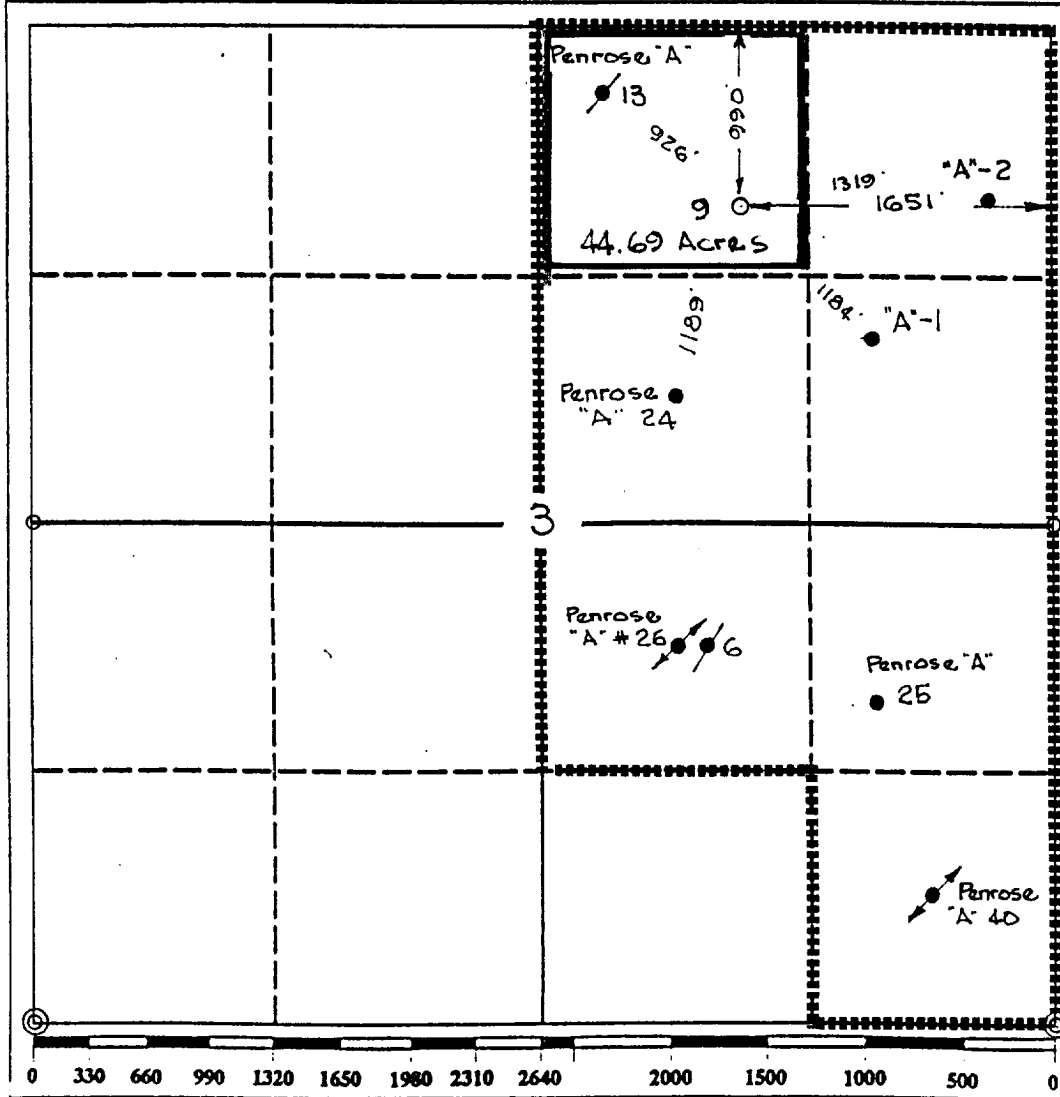
Operator TEXACO EXPL. AND PROD. Inc.		Lease ELLEN SIMS		Well No. 9
Unit Letter B	Section 3	Township 23-South	Range 37-East	County Lea
Actual Footage Location of Well: 990 feet from the North line and 1651 feet from the East line				
Ground level Elev. 3331	Producing Formation Drinkard; Abo; Blinebry	Pool Wildcat (Abo), BLINEBRY, WEST, DRINKARD, SOUTH	Dedicated Acreage: 44.69 Acres	

- Outline the acreage dedicated to the subject well by colored pencil or hatchure marks on the plat below.
- If more than one lease is dedicated to the well, outline each and identify the ownership thereof (both as to working interest and royalty).
- If more than one lease of different ownership is dedicated to the well, have the interest of all owners been consolidated by communitization, unitization, force-pooling, etc.?
 

Yes  No If answer is "yes" type of consolidation \_\_\_\_\_

If answer is "no" list the owners and tract descriptions which have actually been consolidated. (Use reverse side of this form if necessary.) \_\_\_\_\_

No allowable will be assigned to the well until all interests have been consolidated (by communitization, unitization, forced-pooling, or otherwise) or until a non-standard unit, eliminating such interest, has been approved by the Division.



**OPERATOR CERTIFICATION**  
 I hereby certify that the information contained herein is true and complete to the best of my knowledge and belief.

Signature: *Royce D. Mariott*  
 Printed Name: Royce D. Mariott  
 Position: Division Surveyor  
 Company: Texaco Expl. & Prod.  
 Date: April 20, 1993

**SURVEYOR CERTIFICATION**  
 I hereby certify that the well location shown on this plat was plotted from field notes of actual surveys made by me or under my supervision, and that the same is true and correct to the best of my knowledge and belief.

Date Surveyed: April 19, 1993  
 Signature & Seal of Professional Surveyor: *John S. Piper*  
 Certificate No.: 7254 John S. Piper  
 Lea Co. FB. 8, Pg. 45

o = Fd 1" I. Pipe & BC    ⊙ = Fd 2" I. Pipe & BC.    ○ = Staked Location    ↗ = Inj. Well