

Submit to Appropriate
 District Office
 State Lease - 4 copies
 Fee Lease - 3 copies

State of New Mexico
 Energy, Minerals and Natural Resources Department

Form C-102
 Revised 1-1-89
SAMEDAN OIL CORP
RECEIVED

OIL CONSERVATION DIVISION

P.O. Box 2088
 Santa Fe, New Mexico 87504-2088

MAR 8 1993

DISTRICT I
 P.O. Box 1980, Hobbs, NM 88240

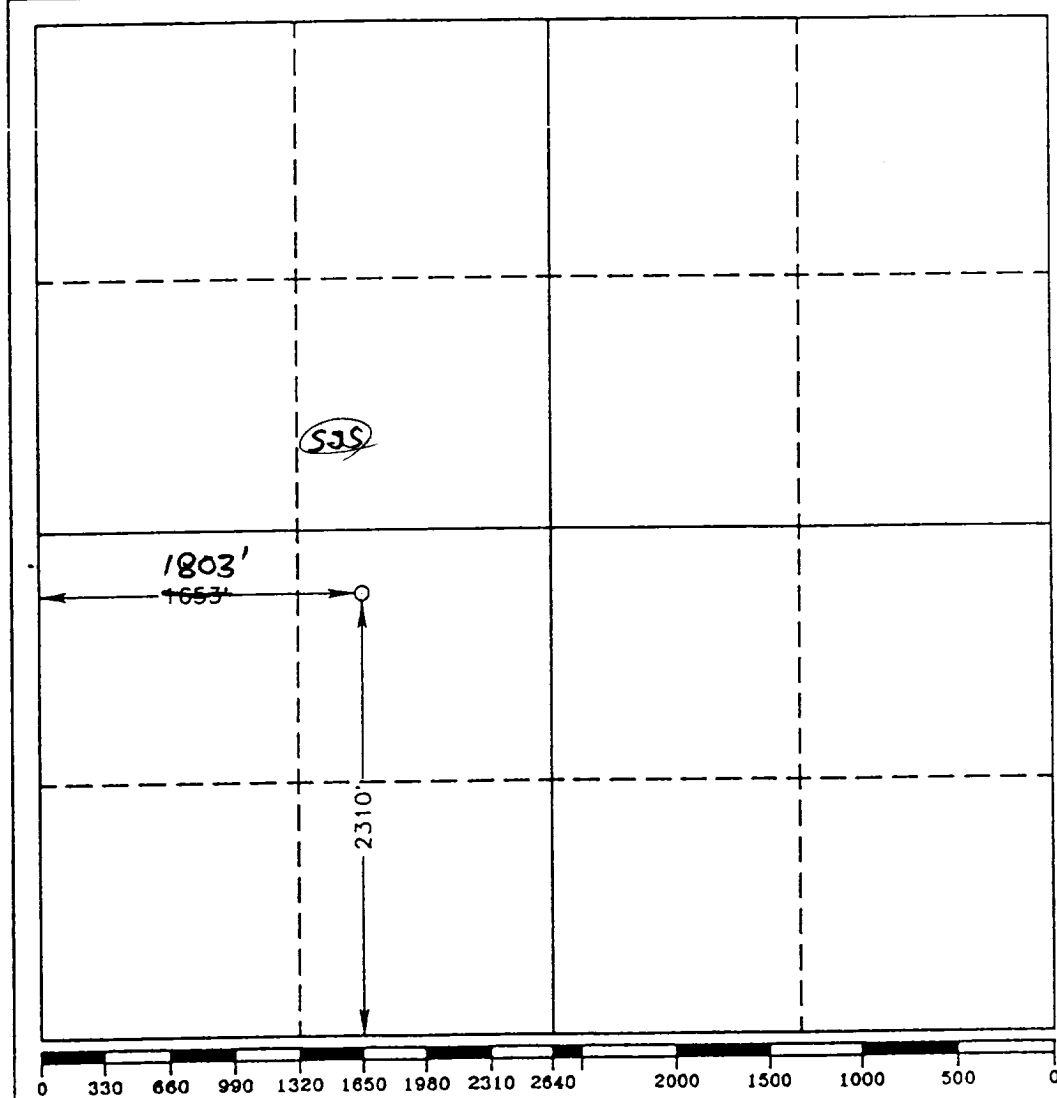
DISTRICT II
 P.O. Drawer DD, Artesia, NM 88210

DISTRICT III
 1000 Rio Brazos Rd., Aztec, NM 87410

WELL LOCATION AND ACREAGE DEDICATION PLAT MIDLAND OFFICE

All Distances must be from the outer boundaries of the section

Operator SAMEDAN OIL CORPORATION		Lease SARAH "B"		Well No. 2
Unit Letter K	Section 12	Township 23 SOUTH	Range 37 EAST	County NMPM
Actual Footage Location of Well: 2310 feet from the SOUTH line and 1803' feet from the WEST line 653				
Ground Level Elev. 3300.8'	Producing Formation Cline	Pool Lower Paddock/Blinebry	Dedicated Acreage: 40 Acres	
1. Outline the acreage dedicated to the subject well by colored pencil or hachure marks on the plat below. 2. If more than one lease is dedicated to the well, outline each and identify the ownership thereof (both as to working interest and royalty). 3. If more than one lease of different ownership is dedicated to the well, have the interest of all owners been consolidated by communitization, unitization, force-pooling, etc.? <input type="checkbox"/> Yes <input type="checkbox"/> No If answer is "yes" type of consolidation _____ If answer is "no" list of owners and tract descriptions which have actually been consolidated. (Use reverse side of this form necessary). No allowable will be assigned to the well unit all interests have been consolidated (by communitization, unitization, forced-pooling, otherwise) or until a non-standard unit, eliminating such interest, has been approved by the Division.				



OPERATOR CERTIFICATION

I hereby certify the the information contained herein is true and complete to the best of my knowledge and belief.

Judy Throneberry
 Signature
Judy Throneberry
 Printed Name
 Div Prod Clerk
 Position
Samedan Oil Corporation
 Company
03/28/95
 Date

SURVEYOR CERTIFICATION

I hereby certify that the well location shown on this plat was plotted from field notes of actual surveys made by me or under my supervision, and that the same is true and correct to the best of my knowledge and belief.

Date Surveyed
MARCH 04, 1993

Signature & Seal of Professional Surveyor

GARY L. JONES
 NEW MEXICO
 7977

Certificate No. **JOHN W. BRES.** 676
RONALD J. EDSON. 3239
GARRARD JONES. 7977

95-11-8565