

SAMEDAN OIL CORPORATION  
10 DESTA DRIVE  
SUITE 240 EAST  
MIDLAND, TEXAS 79705  
(915) 684-8491

- COPY -  
ORIGINAL TO  
SANTA FE

September 3, 1993

PC-847

State of New Mexico  
Oil Conservation Division  
Office of Bill Lamay  
PO Box 2088  
Santa Fe, NM 87504

Attention: Ben Stone

RE: Exception to Rule 303-A  
Surface Commingling of the  
Sarah B. Lease, Fed Lease #NM2244  
Sec 11, T-23-S, R-37-E, Lea County

Samedan is requesting permission to surface commingle the Tubb Pool and the Blinebry Pool in the Cline field at the tank battery located at the Sarah B Well #1, Sec 11, T-23-S, R-37-E, Lea County.

At the present time two wells, Sarah B #1 and Sarah B #2, are producing from the Tubb zone into the battery. Plans are being made for dual completions on both wells from the Blinebry zone and the Tubb zones.

1. Samedan owns and operates 100% of the Sarah B. Lease
2. Tubb Zone: Daily production = 85 bbls oil  
Gravity @ 60 = 33.8. Sulfur = .389  
Value = \$16.25 per bbl for sweet crude  
  
Blinebry Zone: Daily Production = 70 bbls oil (estimate)  
Gravity @ 60 = 40.0 (representative)  
Value = \$16.35 per bbls for sweet crude  
  
Commingled oil: Expected gravity = 37.0 Sweet Crude  
Expected value = \$16.31 per bbl.
3. The actual commercial value of the commingled production will be equal to the sum of the values of the production from each common source of supply.

Please find attached a schematic diagram of the battery installation and plats showing well locations. The Bureau of Land Management has been notified as per Form 3160-5, Sundry Notice, of our intentions.

If I can be of further help please notify at (915) 684-8491.

Thank you,

A handwritten signature in cursive script that reads "Judy Throneberry".

Judy Throneberry  
Division Production Clerk

attachments

Submit to Appropriate  
 District Office  
 State Lease - 4 copies  
 Fee Lease - 3 copies

State of New Mexico  
 Energy, Minerals and Natural Resources Department

Form C-102  
 Revised 1-1-89

SAMEDAN OIL CORP  
 RECEIVED

OIL CONSERVATION DIVISION

P.O. Box 2088  
 Santa Fe, New Mexico 87504-2088

MAR 8 1993

DISTRICT I  
 P.O. Box 1980, Hobbs, NM 88240

DISTRICT II  
 P.O. Drawer DD, Arteria, NM 88210

DISTRICT III  
 1000 Rio Brazos Rd., Aztec, NM 87410

WELL LOCATION AND ACREAGE DEDICATION PLAT MIDLAND OFFICE

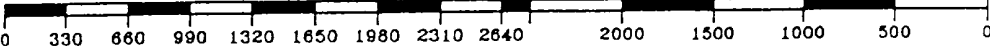
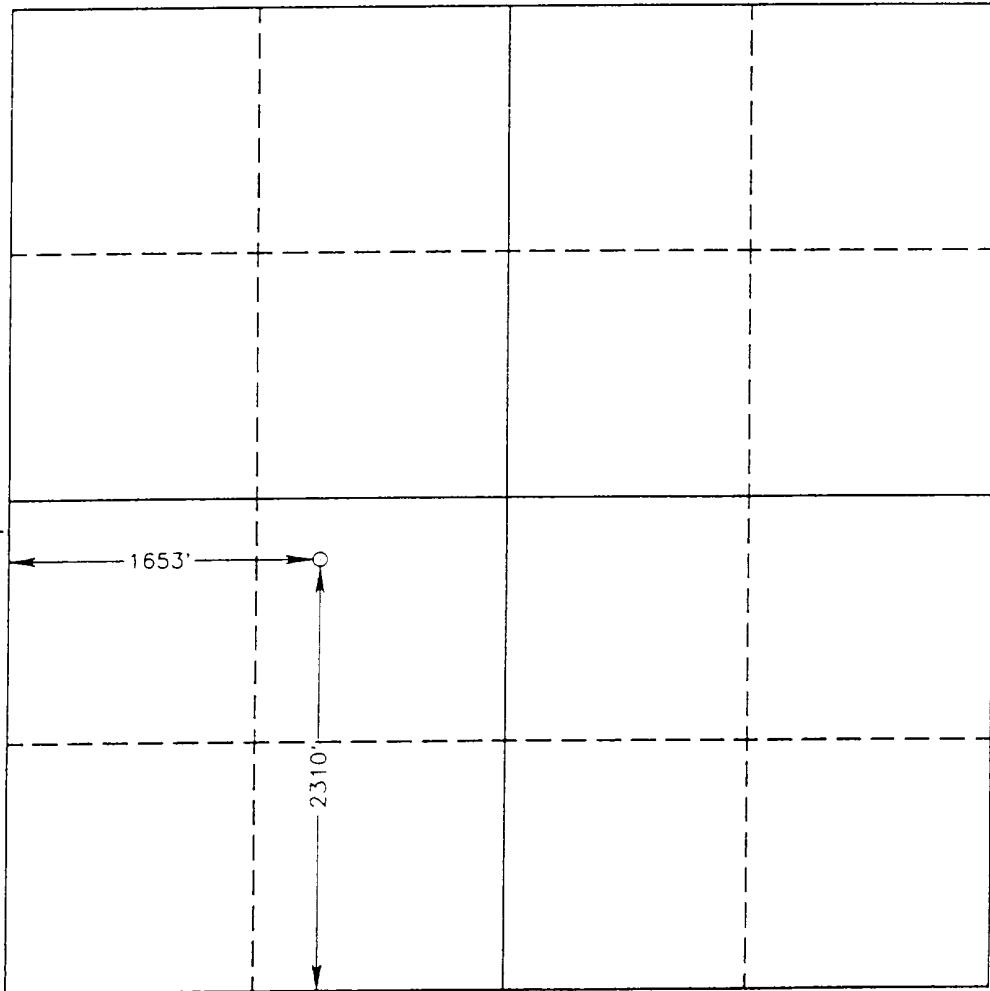
All Distances must be from the outer boundaries of the section

Operator SAMEDAN OIL CORPORATION			Lease SARAH "B"		Well No. 2
Unit Letter K	Section 12	Township 23 SOUTH	Range 37 EAST	County NMPM	LEA
Actual Footage Location of Well:					
2310 feet from the SOUTH line and		1653 feet from the WEST line			
Ground Level Elev. 3300.8'	Producing Formation TUBB	Pool CLINE	Dedicated Acreage: 40 Acres		

- Outline the acreage dedicated to the subject well by colored pencil or hachure marks on the plat below.
- If more than one lease is dedicated to the well, outline each and identify the ownership thereof (both as to working interest and royalty).
- If more than one lease of different ownership is dedicated to the well, have the interest of all owners been consolidated by communitization, unitization, force-pooling, etc.?
 

Yes     No    If answer is "yes" type of consolidation \_\_\_\_\_

If answer is "no" list of owners and tract descriptions which have actually been consolidated. (Use reverse side of this form necessary.)  
 No allowable will be assigned to the well unit all interests have been consolidated (by communitization, unitization, forced-pooling, otherwise) or until a non-standard unit, eliminating such interest, has been approved by the Division.



**OPERATOR CERTIFICATION**

I hereby certify that the information contained herein is true and complete to the best of my knowledge and belief.

*Gary L. Jones*  
 Signature

Printed Name \_\_\_\_\_

Position \_\_\_\_\_

Company \_\_\_\_\_

Date \_\_\_\_\_

---

**SURVEYOR CERTIFICATION**

I hereby certify that the well location shown on this plat was plotted from field notes of actual surveys made by me or under my supervision, and that the same is true and correct to the best of my knowledge and belief.

Date Surveyed  
 MARCH 04, 1993

Signature & Seal of Professional Surveyor

*Gary L. Jones*  
 Signature

Certificate No. JOHN W. JONES, 876  
 RONALD J. EDSON, 3239  
 GARY L. JONES, 7977

95-11-0565

**OIL CONSERVATION DIVISION**

P.O. Box 2088  
Santa Fe, New Mexico 87504-2088

DISTRICT I  
P.O. Box 1980, Hobbs, NM 88240

DISTRICT II  
P.O. Drawer DD, Artesia, NM 88210

DISTRICT III  
1000 Rio Brazos Rd., Aztec, NM 87410

**WELL LOCATION AND ACREAGE DEDICATION PLAT**

All Distances must be from the outer boundaries of the section

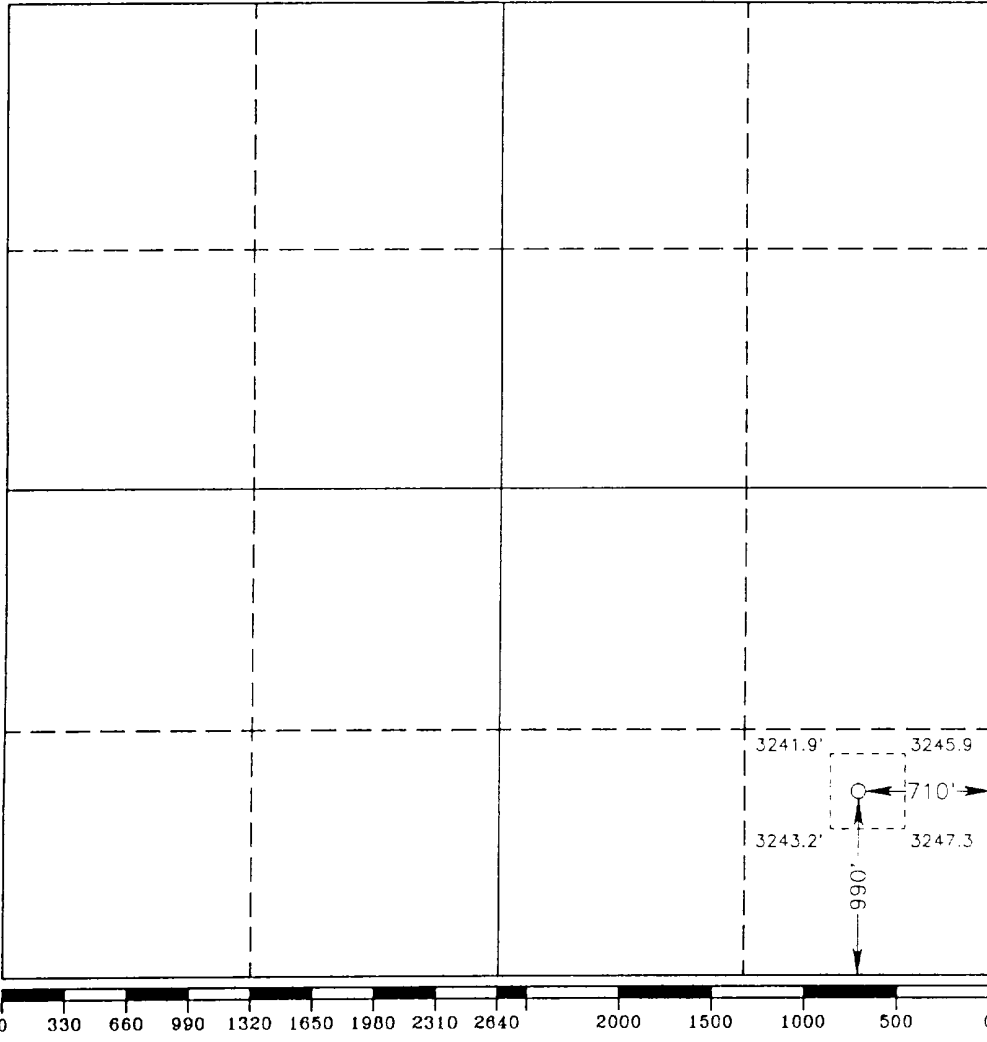
Operator SAMEDAN OIL CORP.			Lease SARAH B		Well No. 1
Unit Letter P	Section 11	Township 23 SOUTH	Range 37 EAST	County LEA	
Actual Footage Location of Well:					
990 feet from the SOUTH line and		710		feet from the EAST line	
Ground Level Elev. 3239.2'	Producing Formation TUBB	Pool CLINE	Dedicated Acreage: 40 Acres		

1. Outline the acreage dedicated to the subject well by colored pencil or hachure marks on the plat below.
2. If more than one lease is dedicated to the well, outline each and identify the ownership thereof (both as to working interest and royalty).
3. If more than one lease of different ownership is dedicated to the well, have the interest of all owners been consolidated by communitization, unitization, force-pooling, etc.?
 

Yes     No    If answer is "yes" type of consolidation \_\_\_\_\_

If answer is "no" list of owners and tract descriptions which have actually been consolidated. (Use reverse side of this form necessary.) \_\_\_\_\_

No allowable will be assigned to the well unit all interests have been consolidated (by communitization, unitization, forced-pooling, otherwise) or until a non-standard unit, eliminating such interest, has been approved by the Division.



**OPERATOR CERTIFICATION**

I hereby certify that the information contained herein is true and complete to the best of my knowledge and belief.

*Gary L. Jones*  
Signature

Printed Name \_\_\_\_\_

Position \_\_\_\_\_

Company \_\_\_\_\_

Date \_\_\_\_\_

---

**SURVEYOR CERTIFICATION**

I hereby certify that the well location shown on this plat was plotted from field notes of actual surveys made by me or under my supervision, and that the same is true and correct to the best of my knowledge and belief.

Date Surveyed  
June 17, 1993

Signature & Seal of Professional Surveyor

*Gary L. Jones*

Certificate No. JOHN W. WEST, 676  
RONALD J. JOHNSON, 3239  
GARY L. JONES, 7977

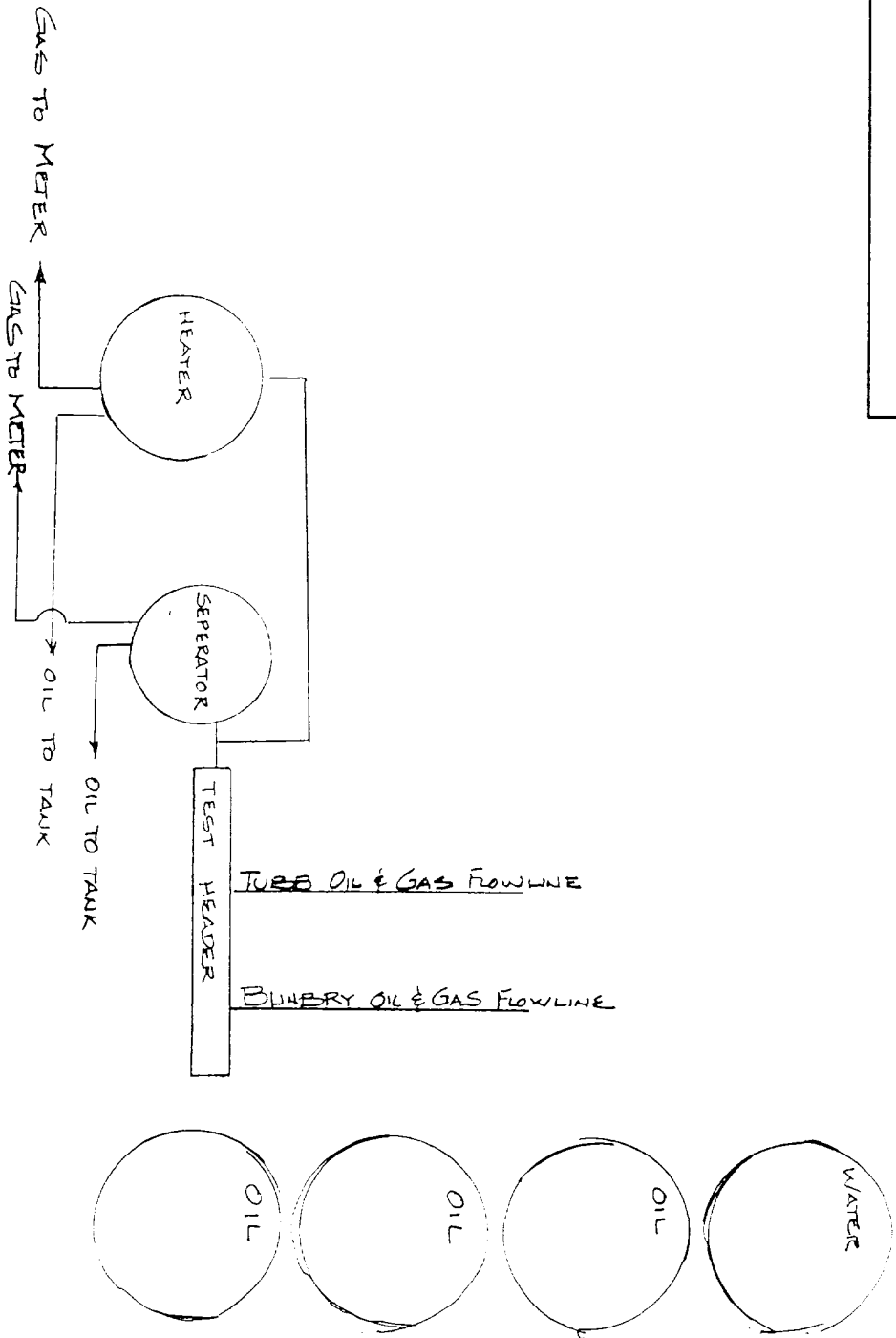
NEW MEXICO PROFESSIONAL SURVEYORS  
1972

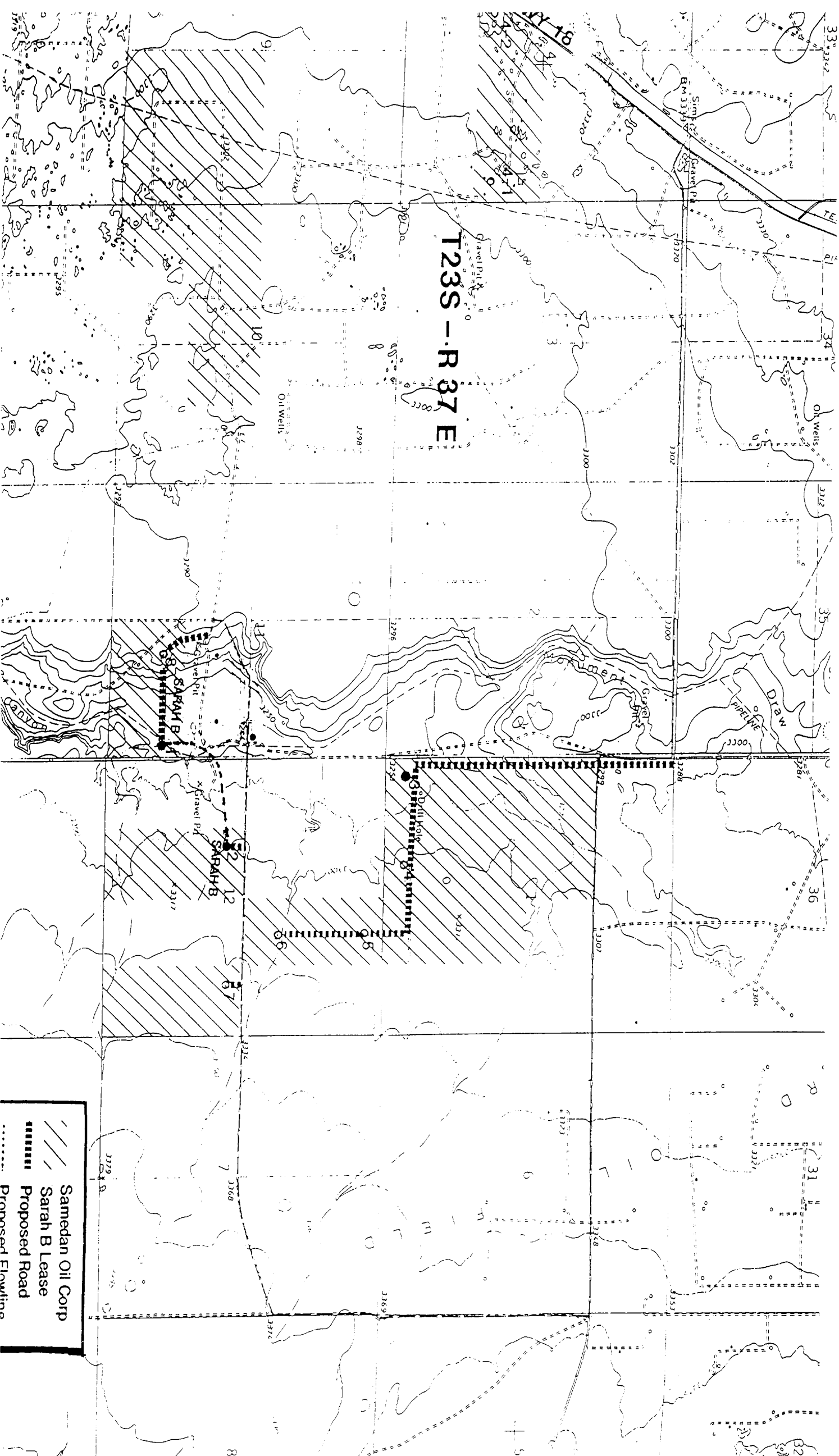


Samedan Oil Corporation  
 10 Deane Drive, Suite 240 East  
 Midland, Texas 79705



SARAH B LEASE TANK BATTERY  
 Section 11, T-23-S, R-37-E  
 Lea County, New Mexico





T23S - R 37 E

Samedan Oil Corp  
 Sarah B Lease  
 Proposed Road  
 Promised Elevation