

Submit to appropriate
 District Office
 State Lease - 4 copies
 Fee Lease - 3 copies

State of New Mexico
 Energy, Minerals and Natural Resources Department

Form C-102
 Revised 1-1-89

OIL CONSERVATION DIVISION

P.O. Box 2088
 Santa Fe, New Mexico 87504-2088

DISTRICT I
 P.O. Box 1980, Hobbs, NM 88240

DISTRICT II
 P.O. Drawer DD, Artesia, NM 88210

DISTRICT III
 1000 Rio Brazos Rd., Aztec, NM 87410

WELL LOCATION AND ACREAGE DEDICATION PLAT

All Distances must be from the outer boundaries of the section

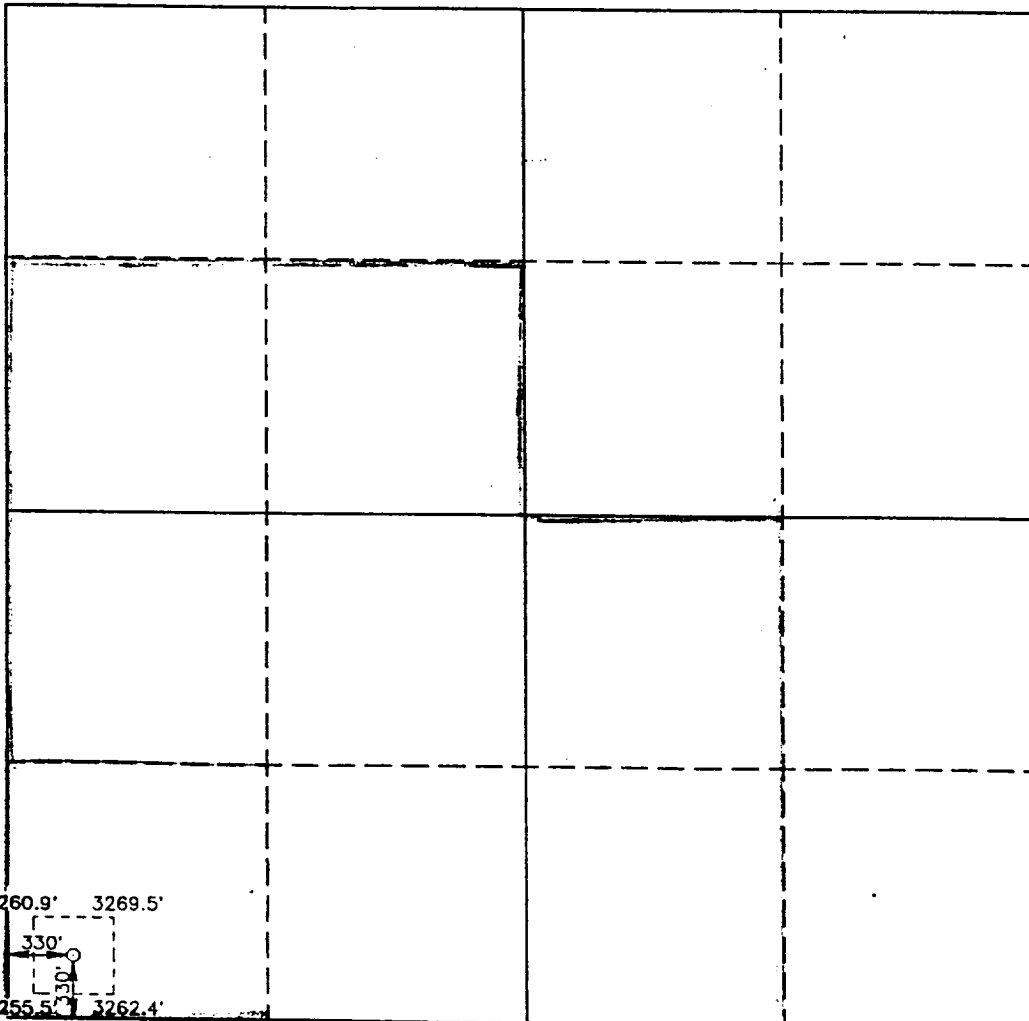
| | | | | | |
|--|--|---|---------------------------------------|---------------------------|--|
| Operator SAMEDAN OIL CORPORATION | | Lease SARAH B | | Well No. 3 | |
| Unit Letter M | Section 1 | Township 23 SOUTH | Range 37 EAST | County NMPM LEA | |
| Actual Footage Location of Well: | | | | | |
| 330 feet from the SOUTH line and | | 330 feet from the WEST line | | | |
| Ground Level Elev. 3263.8' | Producing Formation BLINEBRY | Pool CLINE | Dedicated Acreage: 40 Acres | | |

- Outline the acreage dedicated to the subject well by colored pencil or hachure marks on the plat below.
- If more than one lease is dedicated to the well, outline each and identify the ownership thereof (both as to working interest and royalty).
- If more than one lease of different ownership is dedicated to the well, have the interest of all owners been consolidated by communization, unitization, force-pooling, etc.?

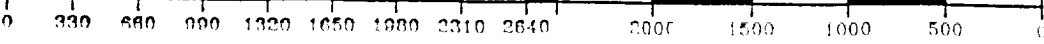
Yes No If answer is "yes" type of consolidation _____

If answer is "no" list of owners and tract descriptions which have actually been consolidated. (Use reverse side of this form necessary.)

No allowable will be assigned to the well unit all interests have been consolidated (by communization, unitization, forced-pooling, otherwise) or until a non-standard unit, eliminating such interest, has been approved by the Division.



3260.9' 3269.5'
 330'
 330'
 3255.5' 3262.4'



OPERATOR CERTIFICATION

I hereby certify that the information contained herein is true and complete to the best of my knowledge and belief.

Gary L. Jones
 Signature

Printed Name

Position
Samedan Oil Corp
 Company

6/30/93
 Date

SURVEYOR CERTIFICATION

I hereby certify that the well location shown on this plat was plotted from field notes of actual surveys made by me or under my supervision, and that the same is true and correct to the best of my knowledge and belief.

Date Surveyed
JUNE 10, 1993

Signature & Seal of Professional Surveyor

Gary L. Jones

GARY L. JONES
 NEW MEXICO
 7977

Cert. No. **JOHN W. WEST 676**
RONALD J. BROWN 3239
GARY L. JONES 7977

93-41-1109

RECEIVED

1993

DDH HOBBS
OFFICE