



STATE OF NEW MEXICO  
ENERGY, MINERALS AND NATURAL RESOURCES DEPARTMENT

OIL CONSERVATION DIVISION  
HOBBS DISTRICT OFFICE

9-20-94

BRUCE KING  
GOVERNOR

POST OFFICE BOX 1980  
HOBBS, NEW MEXICO 88241-1980  
(505) 393-6161

OIL CONSERVATION DIVISION  
P. O. BOX 2088  
SANTA FE, NEW MEXICO 87501

DHC-1059

RE: Proposed:

- MC \_\_\_\_\_
- DHC \_\_\_\_\_ **X**
- NSL \_\_\_\_\_
- NSP \_\_\_\_\_
- SWD \_\_\_\_\_
- WFX \_\_\_\_\_
- PMX \_\_\_\_\_

Gentlemen:

I have examined the application for the:

<i>Samedan Oil Corp</i>	<i>Sharp</i>	<i>#1-F</i>	<i>12-23s-37e</i>
Operator	Lease & Well No.	Unit	S-T-R

and my recommendations are as follows:

*OK*

---

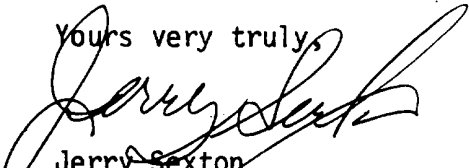


---



---

Yours very truly,



Jerry Sexton  
Supervisor, District 1

/ed

SAMEDAN OIL CORPORATION  
12600 NORTHBOROUGH, SUITE 250  
HOUSTON, TEXAS 77067-3299  
(713) 876-6150

September 12, 1994

Oil Conservation Division  
PO Box 2088  
Santa Fe, New Mexico 87504-2088

Attn: William LeMay:

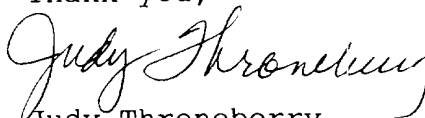
RE: Down hole Commingling  
Sharp Well #1  
Unit F, Sec. 12, T-23-S, R-37-E  
Cline - Tubb  
Cline - Lower Paddock/Blinebry

Samedan Oil Corporation requests administrative approval for the down hole commingling of the above mentioned pools.

We have enclosed the following:

- 1) Area Plat showing ownership of offsetting leases.
- 2) Plat showing acreage dedicated to the well.
- 3) Names and addresses of offsetting operators and a copy of the letter notify them of our intention.
- 4) Division Form C-116 showing 24-hr productivity test from each zone.
- 5) Well History and Prognostication of Future Production.
- 6) Estimated BHP for each Artificially Lifted Zone.
- 7) Fluid Description of each Zone.
- 8) Values of Production.
- 9) Recommended formula for Allocation of production.

We appreciate your consideration in this matter. If you have any questions please call.

Thank you,  
  
Judy Throneberry

attachments

xc: OCC - Hobbs District

TO 4500 TO 3706

E-6143 3-1-98 80" B 1 410

EST. 7 Scarborough F28 770

Petro-Search Fluor  
TIA Blanche E Boyd, MI  
Geo W. Sims, etal (S)

Amerada (S) Aztec etal  
HBP HBP  
1040 State F 6143 Highland  
Tom Linebery, (S) E-6143

Dual 5 Dual 3 Dual 1  
Tom & Evelyn Linebery Fdn  
John Hendrix 031332  
Pike

Seely Oil (M. Deck) OEG HBP B 1167  
S/R Chem T/A 3424 V Sims, etal (S)  
Gulf St L-20 St  
Samedan Samedan  
3-1-98  
31514 1900 VA-852  
2500  
Gulf St Sims, etal

Blair & Chevron H B P  
M V Pike, etal  
C.F.E. Fed Tom & Evelyn Linebery Fdn.  
EL 5283  
D 5402  
Dev 7320  
011 9378  
0/1-9-62  
Six Aeches H.B.P.  
063564

Chevron  
Tom & Evelyn Linebery Fdn  
John Hendrix 031332  
Pike  
Six Aeches  
"Elliott"  
And Pritch Porcell  
107458  
6 S.D. All Rich  
Young

Millard Deck etal S/R  
Petro-Search Gulf St  
Seely Oil  
M Deck  
Gulf St  
K-3424 T/A 4500  
Sims, etal

Sarah B. Hughes (Samedan oper.)  
H.B.P.  
2244  
McCulloch Oil  
U.S.  
Sims, S etal  
ARCO HBP 063557  
Yates Pet. etal 3-1-96 86179 400

ARCO HBP 063557  
Meridian HBP 01076  
2-1-80 11130  
Porcell  
Six Aeches HBP 063564  
S.M. W Sims, etal

Rutledge W.P. Sims 10,3658  
Skelly, DR  
Paul F Rutledge, etal S/R  
R.D Sims etal  
U.N. Morris  
Bill Stapler, Kelton etal Oper.  
Tierra etal K Tierra etal (DR)  
Flot C Sharp  
R.M. FTS etal  
Richardson, etal  
Geo W Sims, (S)

Ann Morris (Sarah B. Hughes)  
U.N. Morris Samedan Oper.  
Bill Stapler, etal HBP 2244  
Chuzza Pet Samedan Sharp  
Gambel 40 Ac. Proration Unit  
Kellon Fed. (Phillips)  
Bli. Disc Samedan (Sarah Hughes)  
152 0324528  
Phillips Sarah (Elk Oil) Phillips Fed. Abo Disc. (FSU)

Maxus Expt. S.M. Grunberg  
4-1-96 86185 2092  
S.M. Grunberg ARCO HBP 069466  
5-1-88 5490  
Marathon S.M. Grunberg ARCO HBP 069466  
7-1-95 5490  
61374

JG 20 Prop. (Curry Resources)  
6-1-77  
(Kellon Oper. to 100' bel Abo.)  
Sarah B Hughes Samedan HBP 2244  
Tom & Evelyn Linebery Fdn.  
Geffy HBP

Phillips Sarah (Elk Oil) Phillips Fed. Abo Disc. (FSU)  
Sarah B. Hughes Samedan Oper. HBP 2244  
McCulloch Oil 1/2  
Tom & Evelyn Linebery Fdn.

Marathon S.M. Grunberg ARCO HBP 069466  
7-1-95 5490  
61374  
Marathon S.M. Grunberg ARCO HBP 069466  
8-1-91 57296  
43575  
Yates Pet. etal 11-1-90 83391  
U.S. Min 225 P30  
Tom & Evelyn Linebery Fdn.

Conoco etal  
030186  
Cactus Cont'l-Cline  
TD 10287  
DIA 5 30 52  
13  
Find O&C (Tenneco) Fed.-Cline Dev. Disc. F228  
U.S., MI  
Tom & Evelyn Linebery Fdn (S)

Conoco etal  
030186  
Cactus Cont'l-Cline  
TD 10287  
DIA 5 30 52  
13  
U.S., MI  
Tom & Evelyn Line

Yates Pet. etal 8-1-84 81751 1000  
Marathon 4-1-94 57296  
Abo Disc Dual Imp. Amer. P81 Susan Fed  
Maxus Expt. 4-1-96 86186 2092  
Managon Pet. Fed. TO 10660 OAT 3-60

**SAMEDAN OIL CORPORATION**  
**SAMEDAN OIL CORPORATION**  
**NO. 1 SHARP**  
**LEA COUNTY, NEW MEXICO**  
SCALE: 1" = 2000'  
DATE: 1-94

Tom Linebery etal

Aztec OEG Meridian E, Fla. HBP E8108

Gulf H.B.P. E-1451

Conoco etal HBP

23

24

**DISTRICT I**

P. O. Box 1980  
 Hobbs, NM 88240

**DISTRICT II**

P. O. Drawer DD  
 Artesia, NM 88210

**OIL CONSERVATION DIVISION**

P. O. Box 2088  
 Santa Fe, New Mexico 87504-2088

**DISTRICT III**

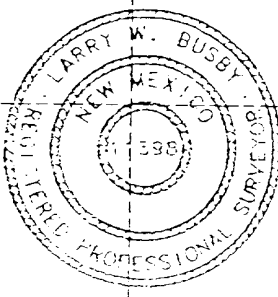
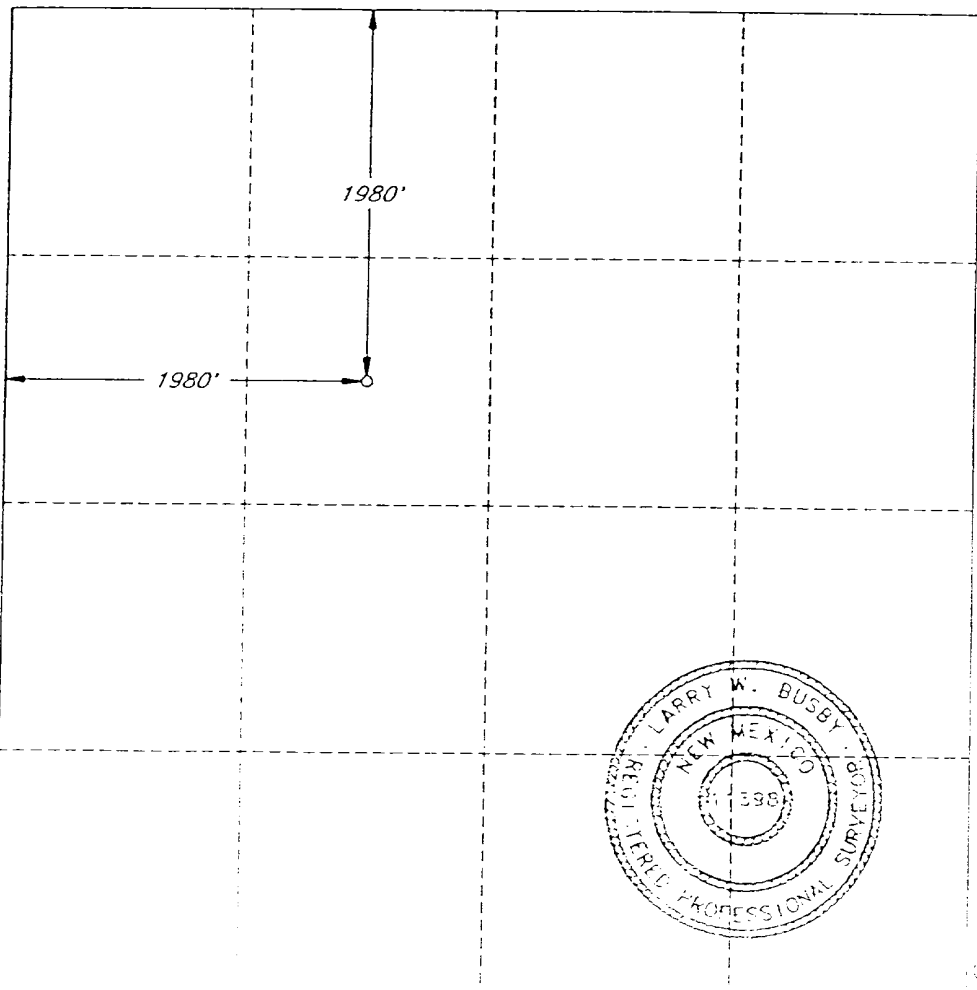
1000 Rio Brazos Rd  
 Aztec, NM 87410

**WELL LOCATION AND ACREAGE DEDICATION PLAT**

All distances must be from the outer boundaries of the section.

Operator <b>SAMEDAN OIL CORPORATION</b>			Lease <b>SHARP</b>		Well No. <b>1</b>
Unit Letter <b>F</b>	Section <b>12</b>	Township <b>23 SOUTH</b>	Range <b>37 EAST, N.M.P.M.</b>	County <b>LEA</b>	
Actual Footage Location of Well					
1980 feet from the <b>NORTH</b> line and		1980 feet from the <b>WEST</b> line			
Ground Level Elev. <b>3297'</b>	Producing Formation <b>Cline</b>	Pool <b>Tubb</b>	40 Acres		

- Outline the acreage dedicated to the subject well by colored pencil or hachure marks on the plat below.
  - If more than one lease is dedicated to the well, outline each and identify the ownership thereof (both as to working interest and royalty).
  - If more than one lease of different ownership is dedicated to the well, have the interest of all the owners been consolidated by communitization, unitization, forced-pooling, etc.?
    - Yes  No If answer is "yes", type of consolidation \_\_\_\_\_
    - If the answer is "no", list the owners and tract descriptions which have actually been consolidated. (Use the reverse side of this form if necessary.) \_\_\_\_\_
- No allowable will be assigned to the well until all interests have been consolidated (by communitization, unitization, forced-pooling, or otherwise) or until a non-standard unit, eliminating such interest, has been approved by the division.



**OPERATOR CERTIFICATION**

I hereby certify that the information herein is true and complete to the best of my knowledge and belief.

Signature <i>Judy Throneberry</i>
Printed Name <b>Judy Throneberry</b>
Position <b>Div Production Clerk</b>
Company <b>Samedan Oil Corporation</b>
Date <b>09/12/94</b>

**SURVEYOR CERTIFICATION**

I hereby certify that the well location shown on this plat was plotted from field notes of actual surveys made by me or under my supervision, and that the same is true and correct to the best of my knowledge and belief.

Date Surveyed <b>SEPTEMBER 28, 1993</b>
Signature and Seal of Professional Surveyor

Certificate No. \_\_\_\_\_  
**LARRY W. BUSBY R.P.S. #11398**  
 LWB / 9307-1 / 4587

**DISTRICT I**  
 P. O. Box 1980  
 Hobbs, NM 88240

**OIL CONSERVATION DIVISION**  
 P. O. Box 2088  
 Santa Fe, New Mexico 87504-2088

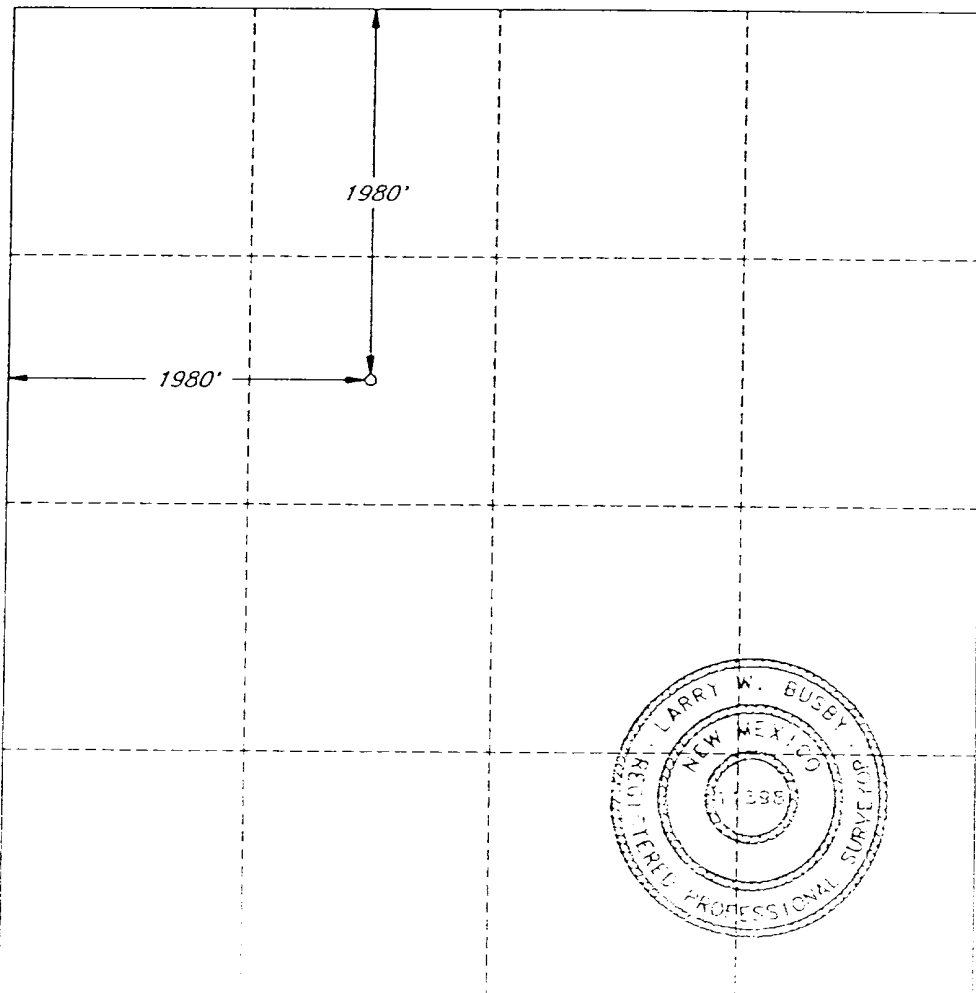
**DISTRICT II**  
 P. O. Drawer DD  
 Artesia, NM 88210

**DISTRICT III**  
 1000 Rio Brazos Rd  
 Aztec, NM 87410

**WELL LOCATION AND ACREAGE DEDICATION PLAT**  
 All distances must be from the outer boundaries of the section.

Operator <b>SAMEDAN OIL CORPORATION</b>			Lease <b>SHARP</b>		Well No. <b>1</b>
Unit Letter <b>F</b>	Section <b>12</b>	Township <b>23 SOUTH</b>	Range <b>37 EAST, N.M.P.M.</b>	County <b>LEA</b>	
Actual Footage Location of Well					
1980 feet from the <b>NORTH</b> line and		1980 feet from the <b>WEST</b> line			
Ground Level Elev. <b>3297'</b>	Producing Formation <b>Cline</b>		Pool <b>Lower Paddock/Blinebry</b>	<b>40</b>	Acres

- Outline the acreage dedicated to the subject well by colored pencil or hachure marks on the plat below.
- If more than one lease is dedicated to the well, outline each and identify the ownership thereof (both as to working interest and royalty).
- If more than one lease of different ownership is dedicated to the well, have the interest of all the owners been consolidated by communitization, unitization, forced-pooling, etc.?
  - Yes  No If answer is "yes", type of consolidation \_\_\_\_\_
  - If the answer is "no", list the owners and tract descriptions which have actually been consolidated. (Use the reverse side of this form if necessary.) \_\_\_\_\_
  - No allowable will be assigned to the well until all interests have been consolidated (by communitization, unitization, forced-pooling, or otherwise) or until a non-standard unit, eliminating such interest, has been approved by the division.



**OPERATOR CERTIFICATION**

I hereby certify that the information herein is true and complete to the best of my knowledge and belief.

Signature  
*Judy Throneberry*  
 Printed Name  
**Judy Throneberry**  
 Position  
**Div Production Clerk**  
 Company  
**Samedan Oil Corporation**  
 Date  
**09/12/94**

**SURVEYOR CERTIFICATION**

I hereby certify that the well location shown on this plat was plotted from field notes of actual surveys made by me or under my supervision, and that the same is true and correct to the best of my knowledge and belief.

Date Surveyed  
**SEPTEMBER 28, 1993**  
 Signature and Seal of Professional Surveyor

*Larry W. Busby*  
 Certificate No.  
**LARRY W. BUSBY R.P.S. #11398**

OFFSET OPERATORS AND WELLS

Chuza Operating  
PO Box 953  
Midland, Texas 79702  
(915) 686-8985  
Phillips Fed. #1  
Unit J, Sec 12, T 23-S, R 37E  
Lea County, NM

Gambi #1  
Unit I, Sec 12, T 23-S, R 37-E  
Lea County, NM

Kelton Operating  
PO Box 276  
Andrews, Texas 79714  
(915) 523-6535  
Lineberry #1  
Unit I, Sec 11, T 23-S, R 37-E  
Lea County NM

Lineberry #2  
Unit J, Sec 11, T 23-S, R 37-E  
Lea County, NM

SAMEDAN OIL CORPORATION  
12600 NORTHBOROUGH, SUITE 250  
HOUSTON, TEXAS 77067-3299  
(713) 876-6150

September 12, 1994

Chuza Operating  
PO Box 953  
Midland, Texas 79702

RE: Down Hole Commingling  
Sharp Well #1  
Unit F, Section 12, T-23S, R-37E  
Lea County, NM  
Cline Tubb Zone  
Cline Lower Paddock/Blinebry Zone

This is to notify you as an offset operator of the Sharp Lease Well #1, that we are applying for administrative approval for down hole commingling of Tubb and Lower Paddock/Blinebry production in the Sharp #1 Well.

If you have any questions please contact Gary Hendricks at 713/876-6150. If you have no objections please sign and return the enclosed letter to the New Mexico Oil Conservation Commission in the self-addressed stamped envelope as soon as possible to expedite matters. Any objections must be filed with the Commission within 20 days of the date of this letter.

Thank you for your time and consideration in this matter.



Judy Throneberry  
Division Production Clerk

attachments

xc: Oil Conservation Division  
Santa Fe, NM

SAMEDAN OIL CORPORATION  
12600 NORTHBOROUGH, SUITE 230  
HOUSTON, TEXAS 77067-3299  
(713) 876-6150

September 12, 1994

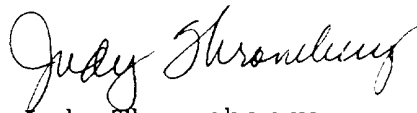
Kelton Operating  
PO Box 276  
Andrews, Texas 79714

RE: Down Hole Commingling  
Sharp Well #1  
Unit F, Section 12, T-23S, R-37E  
Lea County, NM  
Cline Tubb Zone  
Cline Lower Paddock/Blinebry Zone

This is to notify you as an offset operator of the Sharp Lease Well #1, that we are applying for administrative approval for down hole commingling of Tubb and Lower Paddock/Blinebry production in the Sharp #1 Well.

If you have any questions please contact Gary Hendricks at 713/876-6150. If you have no objections please sign and return the enclosed letter to the New Mexico Oil Conservation Commission in the self-addressed stamped envelope as soon as possible to expedite matters. Any objections must be filed with the Commission within 20 days of the date of this letter.

Thank you for your time and consideration in this matter.



Judy Throneberry  
Division Production Clerk

attachments

xc: Oil Conservation Division  
Santa Fe, NM



Submit 2 copies to Appropriate District Office:  
**DISTRICT I**  
 P.O. Box 1980, Hobbs, NM 88240  
**DISTRICT II**  
 P.O. Drawer DD, Artesia, NM 88210  
**DISTRICT III**  
 1000 Rio Brazos Rd., Aztec, NM 87410

State of New Mexico  
 Energy, Minerals and Natural Resources Department  
**OIL CONSERVATION DIVISION**  
 P.O. Box 2088  
 Santa Fe, New Mexico 87504-2088

Form C-116  
 Revised 1/1/89

**GAS - OIL RATIO TEST**

Operator		S Amedan Oil Corporation		020153		Cline Pool - Lower Paddock/Bitinebry		12411		County		Lea														
Address		12600 Northborough, #250, Houston, TX 77067																								
LEASE NAME		WELL NO.		LOCATION			DATE OF TEST		TYPE OF TEST - (X)		SCHEDULED		DAILY ALLOWABLE		LENGTH OF TEST HOURS		PROD DURING TEST		SPECIAL		GAS - OIL RATIO CU FT/BBL					
013179 Sharp		1		F 12 23S 37E			09/08/94		F		20/64		80		24		7		40.1		15		156		10400	

**Instructions:**

During gas-oil ratio test, each well shall be produced at a rate not exceeding the top unit allowable for the pool in which well is located by more than 25 percent. Operator is encouraged to take advantage of this 25 percent tolerance in order that well can be assigned increased allowables when authorized by the Division.  
 Gas volumes must be reported in MCF measured at a pressure base of 15.025 psia and a temperature of 60° F.  
 Specific gravity base will be 0.60.  
 Report casing pressure in lieu of tubing pressure for any well producing through casing.

(See Rule 301, Rule 1116 & appropriate pool rules.)

I hereby certify that the above information is true and complete to the best of my knowledge and belief.

Signature *Judy Throneberry*

Judy Throneberry, Div Prod Clerk

Printed name and title

Date 09/12/94

713 876-6150

Telephone No.

Submit 2 copies to Appropriate District Office:  
**DISTRICT I**  
 P.O. Box 1980, Hobbs, NM 88240  
**DISTRICT II**  
 P.O. Drawer DD, Artesia, NM 88210  
**DISTRICT III**  
 1000 Rio Brazos Rd., Aztec, NM 87410

State of New Mexico  
 Energy, Minerals and Natural Resources Department  
**OIL CONSERVATION DIVISION**  
 P.O. Box 2088  
 Santa Fe, New Mexico 87504-2088

Form C-116  
 Revised 1/1/89

**GAS - OIL RATIO TEST**

Operator		Samedan Oil Corporation				Pool		Cline - Tubb		12440		County		Lea			
Address		12600 Northborough, #250, Houston, Texas 77067				TYPE OF TEST - (X)		Scheduled <input type="checkbox"/>		Completion <input type="checkbox"/>		Special <input checked="" type="checkbox"/>					
LEASE NAME	WELL NO.	LOCATION				DATE OF TEST	SIZE	TBG PRESS.	DAILY ALLOW. ABLE	LENGTH OF TEST HOURS	PROD. DURING TEST		GAS MCF.	GAS - OIL RATIO CU FT/BBL.			
		U	S	T	R						WATER BBL.S.	OIL BBL.S.					
0131/9 Sharp	1	F	12	23S	37E	09/08/94	F	22/64	100			24	9	40.1	17	151	8882

**Instructions:**

During gas-oil ratio test, each well shall be produced at a rate not exceeding the top unit allowable for the pool in which well is located by more than 25 percent. Operator is encouraged to take advantage of this 25 percent tolerance in order that well can be assigned increased allowables when authorized by the Division.  
 Gas volumes must be reported in MCF measured at a pressure base of 15,025 psia and a temperature of 60° F.  
 Specific gravity base will be 0.60.  
 Report casing pressure in lieu of tubing pressure for any well producing through casing.

(See Rule 301, Rule 1116 & appropriate pool rules.)

I hereby certify that the above information is true and complete to the best of my knowledge and belief.

Signature *Judy Thronberry*  
 Judy Thronberry, Div Prod Clerk

Printed name and title  
 09/12/94 713 876-6150

Date Telephone No.

5. WELL HISTORY

See Well Configuration Sketches.

PROGNOSTICATION OF FUTURE PRODUCTION

Production decline rates for both zones Tubb and Lower Paddock/Blinebry can be assumed to be similar. Estimated monthly production for 1995 is submitted below based on latest production rates declined 20% annually.

1995 ESTIMATE PRODUCTION

	TUBB			LOWER PADDOCK/BLINEBRY		
	OIL	WATER	GAS	OIL	WATER	GAS
Jan	456	5	5325	456	5	4092
Feb	448	5	5227	448	5	4017
Mar	440	5	5131	440	5	3943
Apr	432	5	5036	432	5	3870
May	423	5	4943	432	5	3799
Jun	416	5	4852	416	5	3729
Jul	408	5	4675	408	5	3593
Aug	401	5	4589	393	5	3526
Sep	393	5	4504	386	5	3398
Oct	386	5	4421	379	5	3398
Nov	379	5	4340	372	5	3335
Dec	372	5	4340	372	5	3335

ESTIMATED COMBINED PRODUCTION

	OIL	WATER	GAS
Jan	912	10	9417
Feb	896	10	9244
Mar	880	10	9074
Apr	864	10	8906
May	846	10	8742
Jun	832	10	8581
Jul	816	10	8423
Aug	802	10	8208
Sep	786	10	8115
Oct	772	10	7905
Nov	758	10	7819
Dec	744	10	7675

6. ESTIMATED BHP FOR EACH ARTIFICIALLY LIFTED ZONE

The wellbore will produce from the Tubb and Lower Paddock/Blinebry zones. Both producing zones will be artificially lifted. Measured BHP data for this well is not available. However, based on production rates and the fact that both zones will require artificial lift, it is estimated that each zone will be relatively close to the same BHP. Cross flow will not occur due to the fact that production will be artificially lifted and no differential pressure will exist.

**Samedan Oil Corporation**  
Configuration Prior to Commingling

Sharp #1  
Well Name

---

Lea, New Mexico  
County, State

1980' FNL and 1980' FWL  
Section 12, T-23-S, R-37-E

---

Location

---

3297 GL

---

Elevation

13 3/8" 48# H-40 casing at 913'.  
Cemented with 275 sacks Class C  
with 4% gel and 2% CaCl2. Tail in  
with 200 sacks Class C with 2%  
CaCl2. Did not circulate cement.  
Ran survey and found TOC 10'  
from surface.

Note: 11" hole drilled from surface  
casing to 3208'. 7 7/8" hole drilled  
from 3208' to TD.

6/15/94

Installed gas sales line and began  
production from well.

5 1/2" 15.5# J-55 casing at 6300'.  
Cemented with 250 sacks Class H  
with 16% gel, 5# salt, 1/4# flocele  
and 0.4% CFR3. Pump 450 sacks  
Class H Light with 5#/sk salt, 1/4#  
flocele and 0.4% Halad 9. Tail in  
with 250 sacks Class H 50/50 Poz  
with 3#/sk KCL and 0.4% Halad 9.  
Circ 222 sacks to the pit.

Dec-93

Perforate the Tubb as follows:  
6140-44 (4 holes), 6146-48 (2 holes),  
6150-52 (2 holes), 6166-72 (6 holes),  
6182-84 (2 holes), 6188-94 (6 holes)  
Total 24 holes

Breakdown formation with 500 gals  
15% NEFE HCL acid at 4.9 BPM  
and 1688 psi.

Frac down the casing with 28000  
gals Spectra-Frac G-3000 with  
84000# 20/40 Ottawa sand and  
16000# 20/40 CRS sand as follows:  
Pump 10000 gallons pad  
Pump 7000 gals ramping 1-5.4 ppg  
Pump 9000 gals ramping 5.4-8 ppg  
Pump 2000 gals with 8 ppg resin  
Avg rate 20.5 BPM at 1550 psi.

Tubb potential 12-20-93  
20 BOPD, 40 BWPD, 399 MCFPD  
Flowing at 120 psi on a 26/64" chk

1/6/94

Perf the Lower Paddock/Blinebry  
as follows:  
5616-56 (5 holes), 5634-36 (5 holes)  
5640-44 (9 holes), 5652-53 (3 holes)  
5660-66 (13 holes), 5674-78 (9 holes)  
44 total holes.

Acidize with 1000 gallons 15% NEFE  
HCl at 7 BPM and 1550 psi.

Frac down the casing with 26000  
gals Spectrafrac G-3000 with 76000#  
20/40 Ottawa sand and 8000# 20/40  
CRS sand.

Pump 8000 gals pad  
Pump 1091 gals with 2 ppg  
5616 Pump 2362 gals with 4 ppg  
Pump 3815 gals with 6 ppg  
Pump 8172 gals with 8 ppg  
Pump 1385 gals with 8 ppg CRS  
5678 Avg rate 20.2 BPM at 1300 psi

Lower Paddock/Blinebry Potential  
dated 1-14-94  
Flow 130 BOPD, 120 BWPD and  
486 MCFPD at 210# FTP on a  
6140 26/64" choke.

Set Baker Lokset packer at 6082'.  
Ran 2 1/16" J-55 3.25# 10 rd tubing  
and latched on to packer (193 joints)  
6194 Ran SN and 171 joints 2 1/16" J-55  
3.25# 10 rd tubing and set at 5566'  
Kick well off flowing as a dual.  
SI well until gas sales line installed.

**Samedan Oil Corporation**  
Configuration After Commingling

Sharp #1  
Well Name

---

Lea, New Mexico  
County, State

1980' FNL and 1980' FWL  
Section 12, T-23-S, R-37-E

---

Location

3297 GL

---

Elevation

Dec-93

13 3/8" 48# H-40 casing at 913'.  
Cemented with 275 sacks Class C  
with 4% gel and 2% CaCl<sub>2</sub>. Tail in  
with 200 sacks Class C with 2%  
CaCl<sub>2</sub>. Did not circulate cement.  
Ran survey and found TOC 10'  
from surface.

Note: 11" hole drilled from surface  
casing to 3208'. 7 7/8" hole drilled  
from 3208' to TD.

6/15/94

Installed gas sales line and began  
production from well.

Perforate the Tubb as follows:  
6140-44 (4 holes), 6146-48 (2 holes),  
6150-52 (2 holes), 6166-72 (6 holes),  
6182-84 (2 holes), 6188-94 (6 holes)  
Total 24 holes

Breakdown formation with 500 gals  
15% NEFE HCL acid at 4.9 BPM  
and 1688 psi.

Frac down the casing with 28000  
gals Spectra-Frac G-3000 with  
84000# 20/40 Ottawa sand and  
16000# 20/40 CRS sand as follows:

Pump 10000 gallons pad  
Pump 7000 gals ramping 1-5.4 ppg  
Pump 9000 gals ramping 5.4-8 ppg  
Pump 2000 gals with 8 ppg resin  
Avg rate 20.5 BPM at 1550 psi.

Tubb potential 12-20-93  
20 BOPD, 40 BWPD, 399 MCFPD  
Flowing at 120 psi on a 26/64" chk

1/6/94

Perf the Lower Paddock/Blinebry  
as follows:  
5616-56 (5 holes), 5634-36 (5 holes)  
5640-44 (9 holes), 5652-53 (3 holes)  
5660-66 (13 holes), 5674-78 (9 holes)  
44 total holes.

Acidize with 1000 gallons 15% NEFE  
HCl at 7 BPM and 1550 psi.

Frac down the casing with 26000  
gals Spectrafrac G-3000 with 76000#  
20/40 Ottawa sand and 8000# 20/40  
CRS sand.

Pump 8000 gals pad  
Pump 1091 gals with 2 ppg  
5616 Pump 2362 gals with 4 ppg  
Pump 3815 gals with 6 ppg  
Pump 8172 gals with 8 ppg  
Pump 1385 gals with 8 ppg CRS

5678 Avg rate 20.2 BPM at 1300 psi

Lower Paddock/Blinebry Potential  
dated 1-14-94

Flow 130 BOPD, 120 BWPD and  
486 MCFPD at 210# FTP on a

56140 26/64" choke.

Set Baker Lokset packer at 6082'.  
Ran 2 1/16" J-55 3.25# 10 rd tubing  
and latched on to packer (193 joints)  
Ran SN and 171 joints 2 1/16" J-55  
3.25# 10 rd tubing and set at 5566'  
Kick well off flowing as a dual.  
SI well until gas sales line installed.

5 1/2" 15.5# J-55 casing at 6300'.  
Cemented with 250 sacks Class H  
with 16% gel, 5# salt, 1/4# flocele  
and 0.4% CFR3. Pump 450 sacks  
Class H Light with 5#/sk salt, 1/4#  
flocele and 0.4% Halad 9. Tail in  
with 250 sacks Class H 50/50 Poz  
with 3#/sk KCL and 0.4% Halad 9.  
Circ 222 sacks to the pit.

Samedan Oil Corporation  
**Sharp #1 Field Production Report**

Date	Sharp 1 Paddock					Sharp #1 Tubb				
	BOPD	BWPD	MCFPD	FTP	Choke	BOPD	BWPD	MCFPD	FTP	Ch
6/15/94	30	2	303	800	16	0	16	158	1350	16
6/16/94	31	38	584	550	20	20	8	217	450	16
6/17/94	33	40	451	500	20	24	15	263	440	21
6/18/94	30	37	384	460	20	20	15	290	250	20
6/19/94	29	38	355	400	20	21	13	302	200	20
6/20/94	26	37	362	360	20	21	15	305	200	20
6/21/94	25	20	338	380	20	21	10	298	200	21
6/22/94	23	19	320	360	20	22	10	292	200	21
6/23/94	32	20	309	360	20	26	13	289	200	21
6/24/94	36	19	305	320	20	30	15	287	200	21
6/25/94	45	21	294	300	20	35	24	282	100	21
6/26/94	43	20	287	300	20	37	23	206	100	21
6/27/94	45	20	282	320	20	40	23	166	110	20
6/28/94	46	20	277	320	20	38	21	271	120	20
6/29/94	45	20	280	340	20	40	21	275	130	20
6/30/94	43	20	279	340	20	40	21	270	140	20
7/1/94	46	20	277	320	20	38	21	271	140	20
7/2/94	45	18	299	200	20	38	20	250	200	20
7/3/94	46	18	290	200	20	40	21	248	200	19
7/4/94	45	19	284	200	20	38	19	245	200	19
7/5/94	36	14	278	200	20	30	10	243	200	19
7/6/94	37	12	273	200	20	31	8	240	200	19
7/7/94	36	10	267	200	20	30	7	239	200	19
7/8/94	0	0	0	0	0	0	0	0	0	0
7/9/94	36	9	253	380	17	0	0	0	0	0
7/10/94	0	0	0	0	0	0	0	0	0	0
7/11/94	0	0	0	0	0	15	3	136	1480	14
7/12/94	34	11	280	800	17	20	6	125	1200	18
7/13/94	30	8	346	###	18	36	10	259	800	17
7/14/94	35	10	233	300	20	30	8	271	200	19
7/15/94	36	9	240	300	20	30	7	280	200	19
7/16/94	35	10	255	300	20	20	8	235	200	19
7/17/94	36	8	261	240	20	30	8	230	200	20
7/18/94	37	8	258	200	20	30	8	227	200	20
7/19/94	36	7	265	200	20	30	7	227	200	20
7/20/94	36	9	249	200	20	30	8	224	200	20
7/21/94	37	8	245	200	20	30	8	221	200	20
7/22/94	36	7	242	200	20	20	8	219	200	20
7/23/94	34	9	238	180	20	29	9	216	180	19
7/24/94	33	8	231	200	20	28	6	215	200	19
7/25/94	32	7	222	200	20	28	7	211	200	19
7/26/94	33	6	217	200	20	28	5	205	200	19
7/27/94	34	6	213	200	20	26	5	204	200	19
7/28/94	33	7	209	200	20	26	5	205	200	19
7/29/94	32	7	205	200	20	27	6	201	200	19
7/30/94	30	7	199	200	20	25	5	202	200	19
7/31/94	31	8	201	200	20	25	5	199	200	19
8/1/94	31	7	198	200	20	26	7	197	200	19
8/2/94	31	7	195	200	20	26	7	199	200	19
8/3/94	30	7	193	190	20	25	6	197	190	19
8/4/95	31	7	190	190	20	25	6	193	200	19
8/5/94	30	7	186	190	20	25	6	191	200	19
8/6/94	30	7	184	185	20	25	6	195	180	19
8/7/94	30	8	180	185	20	26	6	185	180	19
8/8/94	30	7	177	185	20	25	7	187	180	19
8/9/94	29	5	175	180	20	22	5	188	170	19
8/10/94	29	5	178	180	20	23	5	191	170	19
8/11/94	28	7	171	190	20	20	6	184	180	19
8/12/94	27	5	169	190	20	20	4	182	180	19
8/13/94	25	4	166	190	20	20	4	181	180	19
8/14/94	24	5	165	190	20	20	4	184	180	19
8/15/94	19	5	179	190	20	23	5	161	175	19
8/16/94	21	5	161	190	20	16	5	174	175	19
8/17/94	21	5	158	190	20	17	6	174	175	19
8/18/94	22	8	155	190	20	19	6	178	175	19
8/19/94	20	5	149	170	20	18	6	175	175	19
8/20/94	19	5	146	170	20	16	7	174	175	19
8/21/94	19	5	148	170	20	17	5	169	175	19
8/22/94	19	5	146	170	20	16	4	170	175	19
8/23/94	19	5	143	170	20	16	4	167	175	19
8/24/94	18	5	141	170	20	17	4	171	175	19
8/25/94	17	5	140	170	20	15	5	167	175	19
8/26/94	17	5	138	170	20	15	5	166	175	19
8/27/94	16	6	136	170	20	15	4	165	175	19
8/28/94	15	6	136	170	20	15	5	164	175	19
8/29/94	15	5	134	170	20	14	4	163	175	19
8/30/94	12	4	133	170	20	13	3	162	175	19
8/31/94	15	5	146	180	19	16	6	161	195	20
<b>Totals</b>	<b>2278</b>	<b>848</b>	<b>17456</b>			<b>1849</b>	<b>674</b>	<b>15934</b>		