

OIL CONSERVATION DIVISION

DISTRICT I
 P.O. Box 1980, Hobbs, NM 88240

P.O. Box 2088

Santa Fe, New Mexico 87504-2088

DISTRICT II
 P.O. Drawer DD, Artesia, NM 88210

DISTRICT III
 1000 Rio Brazos Rd., Aztec, NM 87410

WELL LOCATION AND ACREAGE DEDICATION PLAT

All Distances must be from the outer boundaries of the section

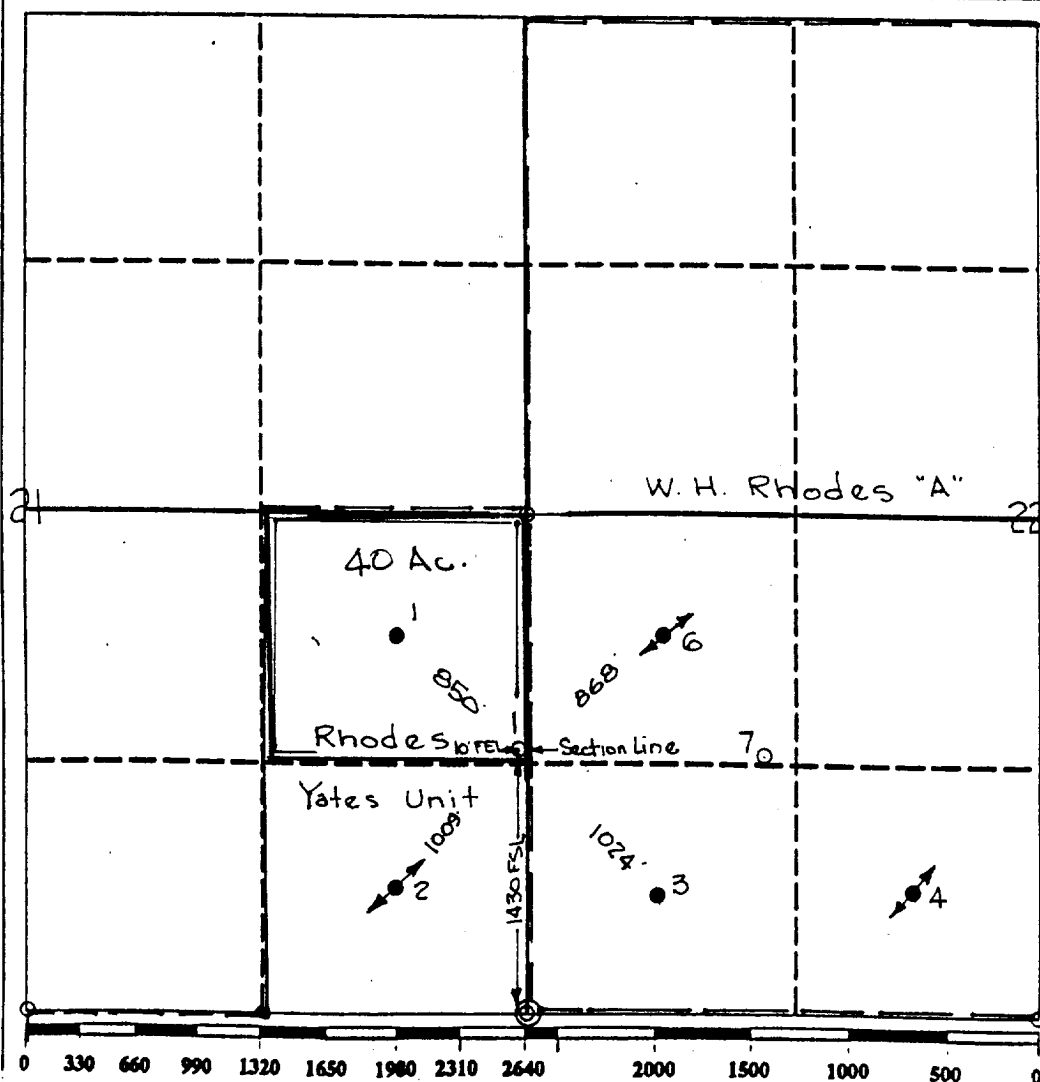
Operator TEXACO EXPLORATION AND PRODUCTION Inc.		Lease Rhodes Yates Coop Fed. Com-4		Well No. 1
Unit Letter I	Section 21	Township -26-South	Range -37-East	County Lea
Actual Footage Location of Well: 1430 feet from the South line and 10 feet from the East line				
Ground level Elev. 2969	Producing Formation Yates/7 RVRS	Pool Rhodes Yates Seven Rivers	Dedicated Acreage: 40 Acres	

- Outline the acreage dedicated to the subject well by colored pencil or hatchure marks on the plat below.
- If more than one lease is dedicated to the well, outline each and identify the ownership thereof (both as to working interest and royalty).
- If more than one lease of different ownership is dedicated to the well, have the interest of all owners been consolidated by communitization, unitization, force-pooling, etc.?

Yes No If answer is "yes" type of consolidation Communitization

If answer is "no" list the owners and tract descriptions which have actually been consolidated. (Use reverse side of this form if necessary.)

No allowable will be assigned to the well until all interests have been consolidated (by communitization, unitization, forced-pooling, or otherwise) or until a non-standard unit, eliminating such interest, has been approved by the Division.



OPERATOR CERTIFICATION

I hereby certify that the information contained herein is true and complete to the best of my knowledge and belief.

Signature: *Royce D. Mariott*

Printed Name: Royce D. Mariott

Position: Division Surveyor

Company: Texaco Expl. & Prod. Inc.

Date: March 8, 1994

SURVEYOR CERTIFICATION

I hereby certify that the well location shown on this plat was plotted from field notes of actual surveys made by me or under my supervision, and that the same is true and correct to the best of my knowledge and belief.

Date Surveyed: June 10, 1993

Signature & Seal of Professional Surveyor: *John S. Piper*

Certificate No. 7254 John S. Piper

Lea Co., FB. 8, Pg. 67