

DISTRICT I

P.O. Box 1980, Hobbs, NM 88241-1980

DISTRICT II

P.O. Drawer DD, Artesia, NM 88211-0719

DISTRICT III

1000 Rio Brazos Rd, Aztec, NM 87410

OIL CONSERVATION DIVISION

P.O. Box 2088

Santa Fe, New Mexico 87504-2088

Filing Instructions
Bottom of Page

APPLICATION FOR MULTIPLE COMPLETION

Operator	Address		
<i>TEXACO EXPLORATION & PRODUCTION, INC.</i>	<i>PO. Box 3109 MIDLAND, TEXAS 79702</i>		
Lease	Well No.	Unit Ltr. - Sec - Twp - Rge	County
<i>R.R. SIMS "A"</i>	<i>7</i>	<i>M - 4 - 23S - 37E</i>	<i>LEA</i>

All applicants for multiple completion must complete items 1 and 2 below.

1. The following facts are submitted:	Upper Zone	Intermediate Zone	Lower Zone
a. Name of Pool and Formation	<i>NORTH TEAGUE L. Paddock - Blinberry Assoc.</i>		<i>NORTH TEAGUE DRINKARD - ABO</i>
b. Top and Bottom of Pay Section (Perforations)	<i>5645 - 5866</i>		<i>6374 - 7056</i>
c. Type of production (Oil or Gas)	<i>OIL</i>		<i>OIL</i>
d. Method of Production (Flowing or Artificial Lift)	<i>FLOWING</i>		<i>FLOWING</i>
e. Daily Production <input type="checkbox"/> Actual <input checked="" type="checkbox"/> Estimated Oil Bbls. Gas MCF Water Bbls.	<i>50 BOPD 200 MCFPD 100 BWPD</i>		<i>8 BOPD 272 MCFPD 23 BWPD</i>

2. The following must be attached:
- Diagrammatic Sketch of the Multiple Completion, showing all casing strings, including diameters and setting depths, centralizers and/or turbolizers and location thereof, quantities used and top of cement, perforated intervals, tubing strings, including diameters and setting depth, location and type of packers and side door chokes, and such other information as may be pertinent.
 - Plat showing the location of all wells on applicant's lease, all offset wells on offset leases, and the names and addresses of operators of all leases offsetting applicant's lease.
 - Electrical log of the well or other acceptable log with tops and bottoms of producing zones and intervals of perforation indicated thereon. (If such log is not available at the time application is filed it shall be submitted as provided by Rule 112-A.)

OPERATOR:

I hereby certify above information is true and complete to best of my knowledge, and belief

Signature *C.P. Basham*
 Printed Name & Title *C.P. BASHAM DRILLING SUPERVISOR*
 Date *12/19/94* Telephone *363 793-4275*

OIL CONSERVATION DIVISION

Approved by: *ORIGINAL SIGNED BY JERRY SEXTON*
 DISTRICT I SUPERVISOR
 Title: _____
 Date: *DEC 27 1994*

NOTE: If the proposed multiple completion will result in an unorthodox well location and/or a non-standard production unit in one or more of the producing zones, then separate application for approval of the same should be filed simultaneously with this application.

FILING INSTRUCTIONS:

- District Approval -- See rule 112-A-B -- Submit 4 copies of Form C-107 with attachments to appropriate district office.
- Division Director Administrative Approval -- See Rule 112-C -- Submit 2 copies of Form C-107 with attachments to Division office in Santa Fe and 2 copies of Form C-107 with attachments to appropriate district office.
- Multiple completions not qualifying for District or Division Director approval may be set for hearing as outlined in Rule 112-A-E

RECEIVED

DEC 23 1994

OCD HOBBS
OFFICE

PROPOSED DUAL COMPLETION

Well R.R. SIMS "A" No. 7

Field NORTH TEAGUE

Location M-4-235-37E

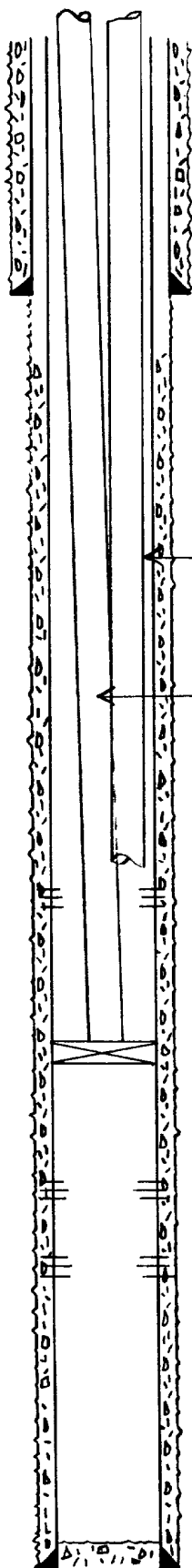
Elevation KB: 3335', GL: 3323'

Date DECEMBER 13, 1994

3000 psi dual production tree

Maximum possible surface pressure on 7" casing would be 1900 psi.

The 7" casing is designed for a maximum pressure of 4000 psi while fracturing down casing.



9 5/8" casing set at 1180' in 12 1/4" hole. Casing ID 8.921"
Cemented with 550 Sacks
Circulated 125 sacks to surface
Centralized bottom 3 jts. and every 4th to surface

Short Tubing String: 2 1/16", 3.25 lb, J55, IJ 10rd
ID = 1.751". Bottom at 5600'

Long Tubing String: 2 3/8", 4.70 lb, J55, EUE 8rd
ID = 1.995"

Blinbry perforations 5645 to 5866

Permanent drillable packer at 6340'
Guiberson "HT" Magnum

Drinkard perforations 6374 to 6460

Abo perforations 6624 to 7056

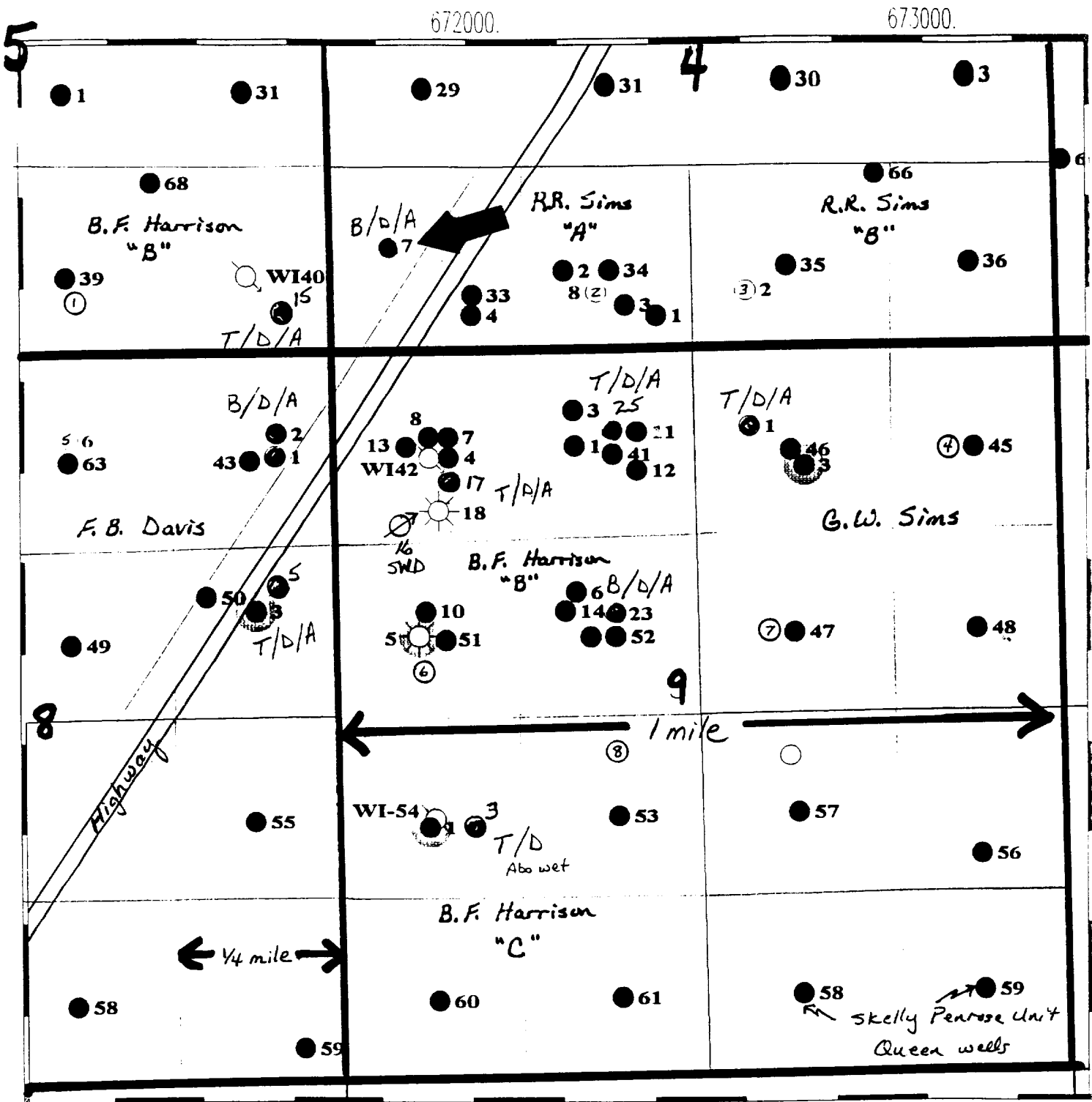
7" casing set at 7150' in 8 3/4" hole. Casing ID 6.276"
Cemented with 3100 Sacks
Circulated -0- sacks to surface
Centralized bottom 700'
Top of cement at 1255' by temperature Survey

NOTE: 9 5/8" x 7" annulus currently has -0- psi. This annulus will be monitored and remedial action taken should pressure develop.

RECEIVED

DEC 23 1994

OCD HOBBS



Teague North Field 11/94
T-23-S R-37-E

RECEIVED

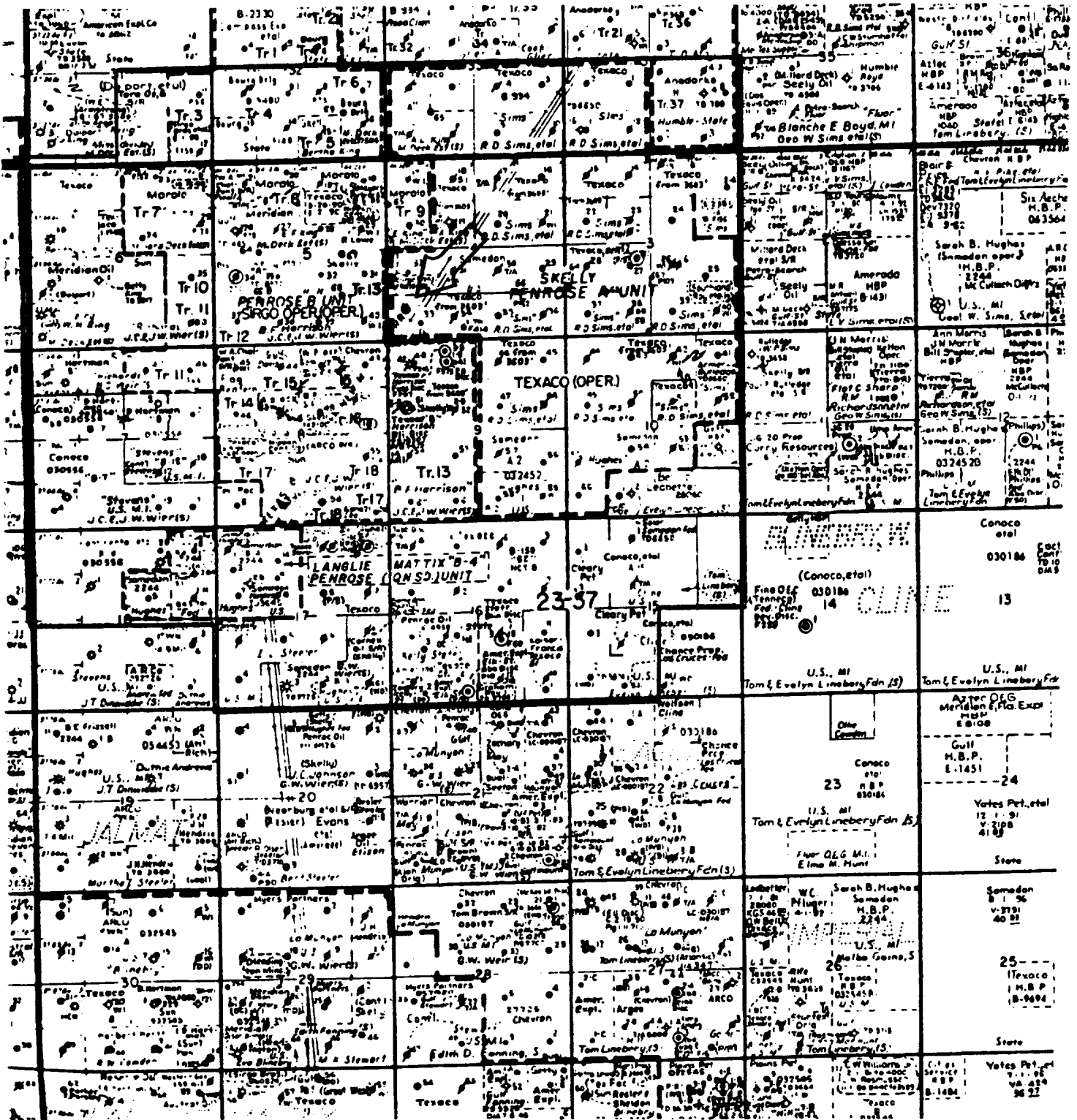
DEC 23 1994

OCD HOBBS
OFFICE

Offset Operator Plat

Lease: R.R. Sims "A" No. 7

Location: SW/4 of SW/4 Section 4 Lea County, New Mexico



RECEIVED

DEC 23 1994

OCD HOBBS
OFFICE

Application for Multiple Completion

Offset Operator List

R. R. Sims "A" No. 7

- A. SE/4 section 5, NE/4 section 8, NW/4 section 9, SE/4 of SW/4 section 4

Texaco Exploration & Production, Inc.
P. O. Box 2100
Denver, Colorado 80201

- B. N/2 of SW/4 section 4

Samedan Oil Corporation
P. O. Box 909
Ardmore, Oklahoma 73402

Work Copy



SPECTRAL DENSITY
DUAL SPACED NEUTRON
SPECTRAL GAMMA LOG

COMPANY TEXACO E AND P INC. WELL R.R. SIMS -A- NO. 7 FIELD UNDESIGNATED ABO COUNTY LEA STATE NM	COMPANY TEXACO E AND P INC.	
	WELL R.R. SIMS -A- NO. 7	
	FIELD UNDESIGNATED ABO	
	COUNTY LEA	STATE NM
API NO	30-025-32501	OTHER SERVICES
LOCATION	825 FSL AND 604 FWL	DLL-MSFL
SECT 4	TWP 23-S	RGE 37-E

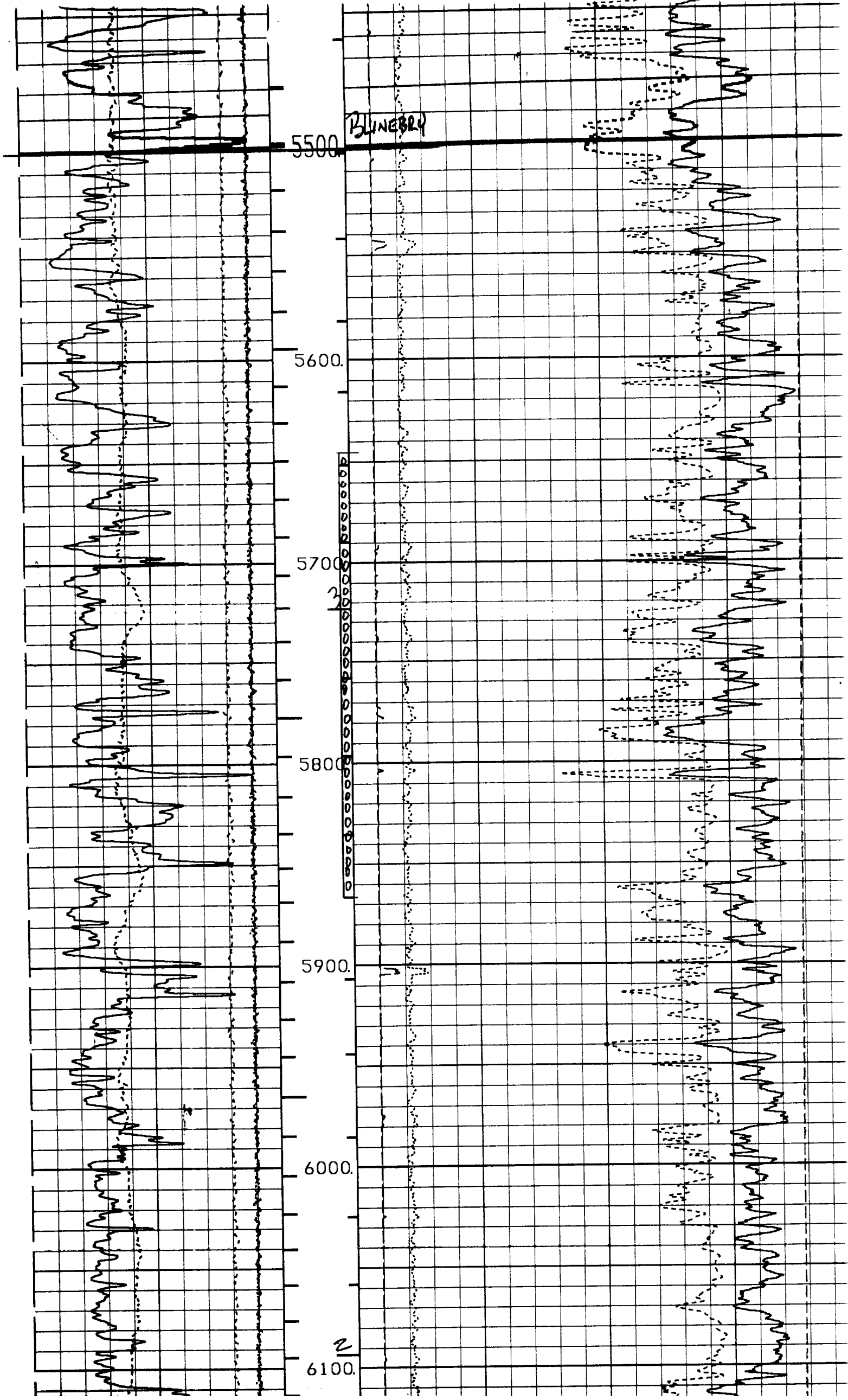
PERMANENT DATUM G. L.	ELEV. 3323	ELEV. : K. B. 3335
LOG MEASURED FROM K. B. OR 12	FT. ABOVE PERM DATUM	D. F. 3334
DRILLING MEASURED FROM K. B.		G. L. 3323

DATE	07/17/94			
RUN NO.	ONE			
DEPTH-DRILLER	7150			
DEPTH-LOGGER	6952			
BTH. LOG INTER	6942			
TOP LOG INTER	SURFACE			
CASING DRILLER	9.625 @ 1180	•	•	•
CASING-LOGGER	1177			
BIT SIZE	8.75 INCH			
TYPE FLUID IN HOLE	BRINE			
DENS. : VISC.	9.8 : 29	:	:	:
PH : FLUID LOSS	9.0 : NA	:	:	:
SOURCE OF SAMPLE	CIRCULATED			
RM @ MEAS. TEMP.	0.06 @ 82	•	•	•
RMF @ MEAS. TEMP.	0.06 @ 82	•	•	•
RMC @ MEAS. TEMP.	NA @ NA	•	•	•
SOURCE RMF : RMC	MEAS. : MEAS.	:	:	:
RM @ BHT	0.04 @ 116	•	•	•
TIME SINCE CIRC.	10 HOURS			
TIME ON BOTTOM	07:49 HOURS			
MAX. REC TEMP.	116 @ TD	•	•	•
EQUIP. : LOCATION	7670 : HOBBS	:	:	:
RECORDED BY	M.L. MIMS			
WITNESSED BY				

RECEIVED

DEC 23 1994

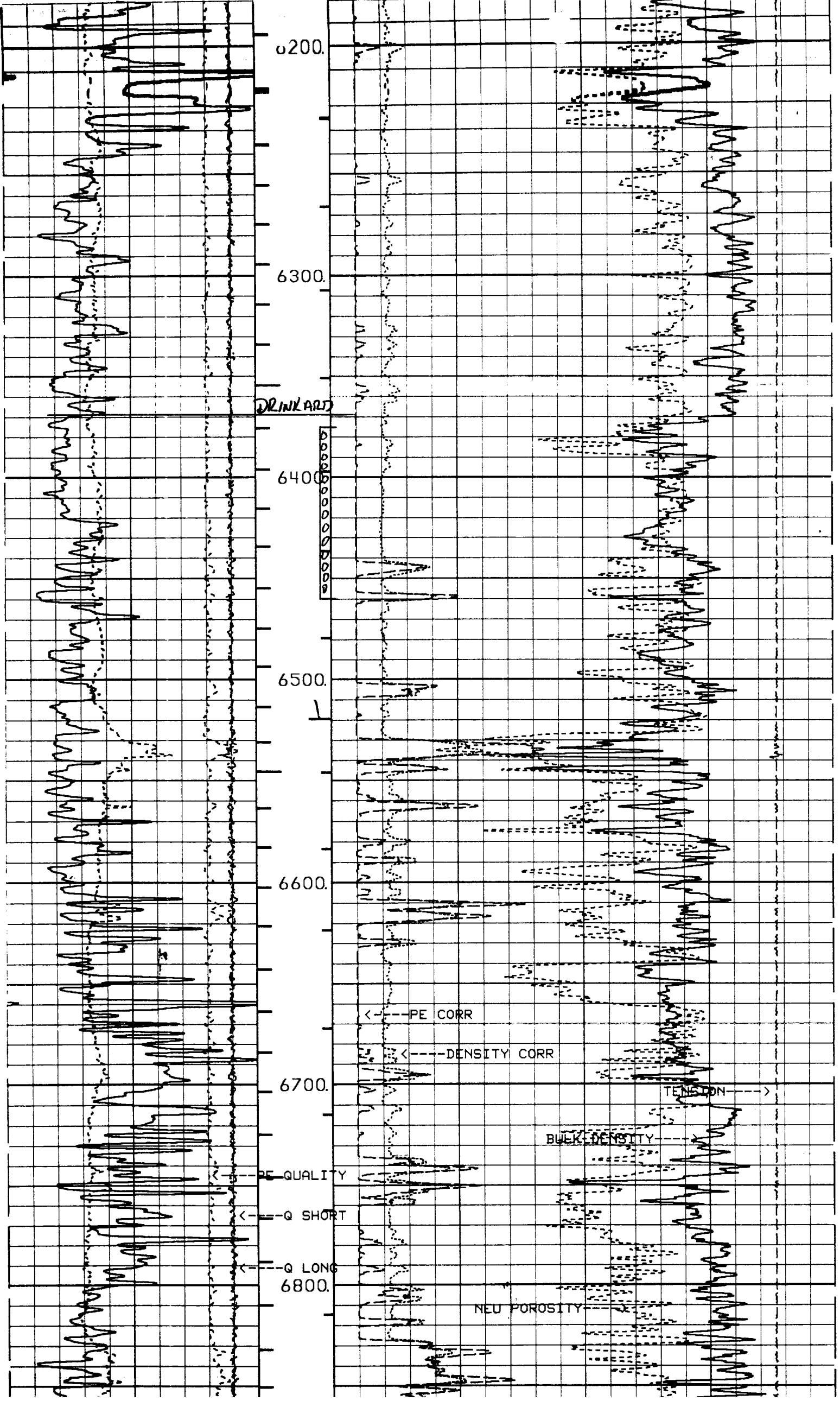
OCD HOBBS



RECEIVED

DEC 23 1994

OCD HOBBS
OFFICE



Well File



HALLIBURTON

DUAL SPACED
NEUTRON

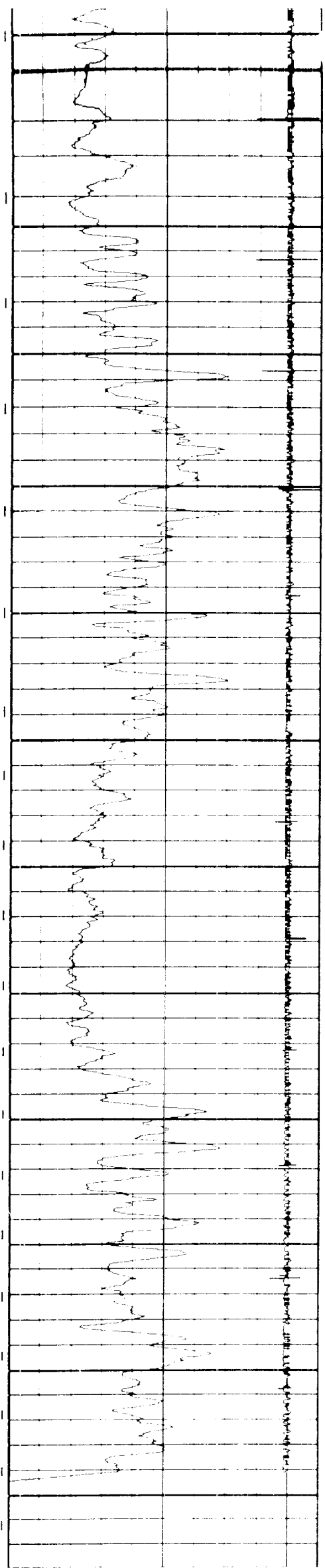
COMP. : TEXACO E AND P INC. WELL : R.R. SIMS "A" NO. 7 FIELD : UNDESIGNATED ABO COUNTY: LEA	ST. N. MEX COUNTY: LEA	COMPANY TEXACO E AND P INC.					
		WELL R.R. SIMS "A" NO. 7					
		FIELD UNDESIGNATED ABO					
		COUNTY LEA	STATE N. MEX.				
		API NO. 30-025-32501					
LOCATION :		OTHER SERVICES					
825 FSL AND 604 FWL		CBL LOG					
UNIT LETTER M							
SEC. 4	TWP. 23-S	RGE. 37-E					
PERMANENT DATUM	GL	ELEV. 3323	ELEV.:K.B. 3335				
LOG MEASURED FROM	KB	12 FT. ABOVE PERM. DATUM	D.F. 3334				
DRILLING MEAS FROM	KB		G.L. 3323				
DATE @ TIME LOGGED	07/22/94 @ 00:00	TYPE OF FLUID IN HOLE WATER					
RUN No.	ONE	DENSITY OF FLUID	NA				
DEPTH - DRILLER	7130	FLUID LEVEL	FULL				
DEPTH - LOGGER	7131	CEMENT TOP EST/LOGGED	NA				
BTM LOGGED INTERVAL	7106	EQUIPMENT : LOCATION	51300:HOBBS				
TOP LOGGED INTERVAL	6300	RECORDED BY	MORGAN				
MAX RECORDED TEMP.	116	WITNESSED BY	CULPEPPER				
CEMENTING DATA	SURF. STRING	INT. STRING	PROD. STRING				
DATE/TIME CEMENTED	/ .	/ .	/ .				
PRIMARY/SQUEEZE							
COMPRESSIVE STR. EXPECTED @	: Hrs	: Hrs	: Hrs				
CEMENT VOLUME							
CEMENT TYPE/WEIGHT							
MUD TYPE/MUD WGT.							
FORMULATION							
RUN No.	BOREHOLE RECORD			CASING AND TUBING RECORD			
	BIT SZ.	FROM	TO	SIZE	WGT.	FROM	TO
1				9.625	NA	SURF.	1177
				7.0"	23#	SURF.	T.D.

RECEIVED

DEC 25 1994

U.S. HOUSE OF REPRESENTATIVES

412



100.0	GAMMA2	200.0
0.0	CCL	100.0

6600

6700

6800

6900

7000

7100

