

## DISTRICT I

P.O. Box 1980, Hobbs, NM 88241-1980

## DISTRICT II

P.O. Box Drawer DD, Artesia, NM 88211-0719

## DISTRICT III

1000 Rio Brazos Rd., Aztec, NM 87410

## DISTRICT IV

P.O. Box 2088, Santa Fe, NM 87504-2088

## State of New Mexico

Energy, Minerals and Natural Resources Department

Form C-101

Revised February 10, 1994

Instructions on back

Submit to Appropriate District Office

State Lease - 6 Copies

## OIL CONSERVATION DIVISION

P.O. Box 2088

Santa Fe, New Mexico 87504-2088

Fee Lease - 5 Copies

☐ AMENDED REPORT

## APPLICATION FOR PERMIT TO DRILL, RE-ENTER, DEEPEN, PLUGBACK, OR ADD A ZONE

<sup>1</sup> Operator Name and Address TEXACO EXPLORATION & PRODUCTION INC. P.O. Box 3109, Midland Texas 79702		<sup>2</sup> OGRID Number 022351
		<sup>3</sup> API Number 30-025-32501
<sup>4</sup> Property Code 13191 11060	<sup>5</sup> Property Name SIMS, R. R. 'A'	<sup>6</sup> Well No. 7

<sup>7</sup> Surface Location

Ul or lot no.	Section	Township	Range	Lot.Idn	Feet From The	North/South Line	Feet From The	East/West Line	County
M	4	23-S	37-E		825	SOUTH	604	WEST	LEA

<sup>8</sup> Proposed Bottom Hole Location If Different From Surface

Ul or lot no.	Section	Township	Range	Lot.Idn	Feet From The	North/South Line	Feet From The	East/West Line	County
<sup>9</sup> Proposed Pool 1 South <del>UNDERSIGNED</del> DRINKARD <19380>					<sup>10</sup> Proposed Pool 2 Wildcat <del>UNDERSIGNED</del> ABO <96034>				

<sup>11</sup> Work Type Code N	<sup>12</sup> Well Type Code M O	<sup>13</sup> Rotary or C.T. R	<sup>14</sup> Lease Type Code P	<sup>15</sup> Ground Level Elevation 3323'
<sup>16</sup> Multiple Yes	<sup>17</sup> Proposed Depth 7000'	<sup>18</sup> Formation DRINKARD/ABO	<sup>19</sup> Contractor	<sup>20</sup> Spud Date 5/15/94

<sup>21</sup> Proposed Casing and Cement Program

SIZE OF HOLE	SIZE OF CASING	WEIGHT PER FOOT	SETTING DEPTH	SACKS OF CEMENT	EST. TOP
12 1/4	9 5/8	36#	1180'	550	SURFACE
8 3/4	7	20# & 23#	7000'	2300	SURFACE

<sup>22</sup> Describe the proposed program. If this application is to DEEPEN or PLUG BACK give the data on the present productive zone and proposed new productive zone. Describe the blowout prevention program, if any. Use additional sheets if necessary.

## CEMENTING PROGRAM:

SURFACE CASING - 350 SACKS CLASS C w/ 4% GEL, 2% CACL2 (13.5 PPG, 1.74 CF/S, 9.11 GW/S). F/B 200 SACKS CLASS C w/ 2% CACL2 (14.8 PPG, 1.34 CF/S, 6.31 GW/S).

PRODUCTION CASING - 1550 SACKS 35/65 POZ CLASS H w/ 6% GEL, 5% SALT, 1/4# FLOCELE (12.8 PPG, 1.94 CF/S, 10.4 GW/S). F/B 750 SACKS 50/50 POZ CLASS H w/ 2% GEL, 5% SALT, 1/4# FLOCELE (14.2 PPG, 1.35 CF/S, 6.3 GW/S).

THERE ARE NO OTHER OPERATORS IN THIS QUARTER QUARTER SECTION.

<sup>23</sup> I hereby certify that the rules and regulations of the Oil Conservation Division have been complied with and that the information given above is true and complete to the best of my knowledge and belief.

Signature

C. P. Basham / cwh

Printed Name

C. P. Basham

Title Drilling Operations Mgr.

Date 4/22/94

Telephone 688-4620

## OIL CONSERVATION DIVISION

Approved By:

ORIGINAL SIGNED BY JERRY SEXTON  
DISTRICT I SUPERVISOR

Title:

Approval Date: APR 27 1994

Expiration Date:

Conditions of Approval:

Attached ☐

**RECEIVED**

**APR 25 1994**

**OCD HUBBARD  
OFFICE**

Submit to Appropriate  
District Office  
State Lease - 4 copies  
Fee Lease - 3 copies

State of New Mexico  
Energy, Minerals and Natural Resources Department

Form C-102  
Revised 1-1-89

OIL CONSERVATION DIVISION

P.O. Box 2088

Santa Fe, New Mexico 87504-2088

DISTRICT I

P.O. Box 1980, Hobbs, NM 88240

DISTRICT II

P.O. Drawer DD, Artesia, NM 88210

DISTRICT III

1000 Rio Brazos Rd., Aztec, NM 87410

WELL LOCATION AND ACREAGE DEDICATION PLAT

All Distances must be from the outer boundaries of the section

Operator TEXACO EXPL. AND PROD. Inc.			Lease R. R. SIMS "A"		Well No. 7
Unit Letter M	Section 4	Township 23-South	Range 37-East	County Lea	

Actual Footage Location of Well:

825	feet from the	South	line and	604	feet from the	West	line
Ground level Elev. 3323	Producing Formation Drinkard & Abo		Pool Undesignated, Drinkard & Abo	Dedicated Acreage: 40			Acres

1. Outline the acreage dedicated to the subject well by colored pencil or hatchure marks on the plat below.
2. If more than one lease is dedicated to the well, outline each and identify the ownership thereof (both as to working interest and royalty).
3. If more than one lease of different ownership is dedicated to the well, have the interest of all owners been consolidated by communitization, unitization, force-pooling, etc.?  
☐ Yes ☐ No If answer is "yes" type of consolidation \_\_\_\_\_  
If answer is "no" list the owners and tract descriptions which have actually been consolidated. (Use reverse side of this form if necessary.) \_\_\_\_\_  
No allowable will be assigned to the well until all interests have been consolidated (by communitization, unitization, forced-pooling, or otherwise) or until a non-standard unit, eliminating such interest, has been approved by the Division.

OPERATOR CERTIFICATION

I hereby certify that the information contained herein is true and complete to the best of my knowledge and belief.

Signature  
*Royce D. Mariott*  
Printed Name  
Royce D. Mariott  
Position  
Division Surveyor  
Company  
Texaco Expl. & Prod.  
Date  
April 18, 1994

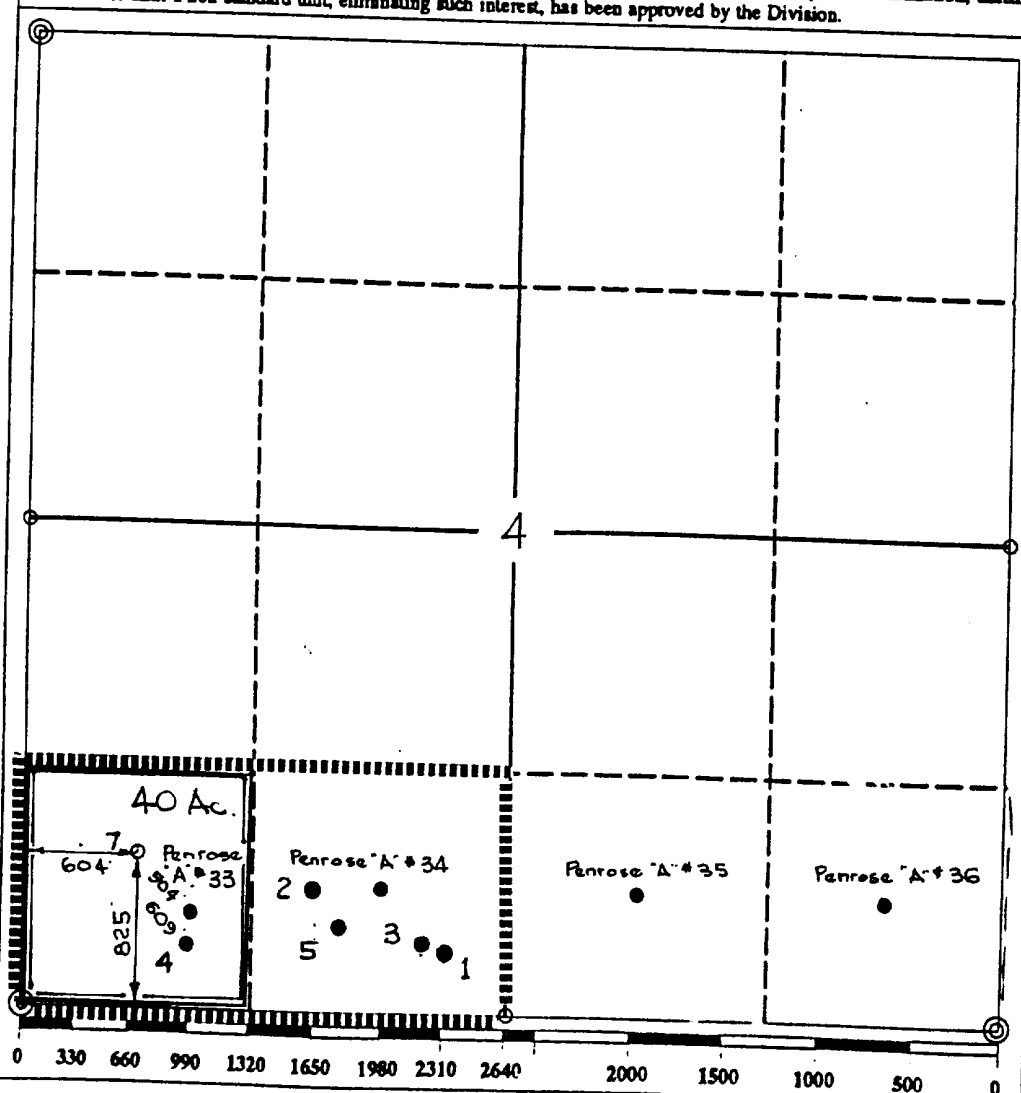
SURVEYOR CERTIFICATION

I hereby certify that the well location shown on this plat was plotted from field notes of actual surveys made by me or under my supervision, and that the same is true and correct to the best of my knowledge and belief.

Date Surveyed  
April 11, 1994  
Signature & Seal of  
Professional Surveyor

*John S. Piper*  
Certificate No.  
7254 John S. Piper

Lea Co. FB. 10, Pg. 47



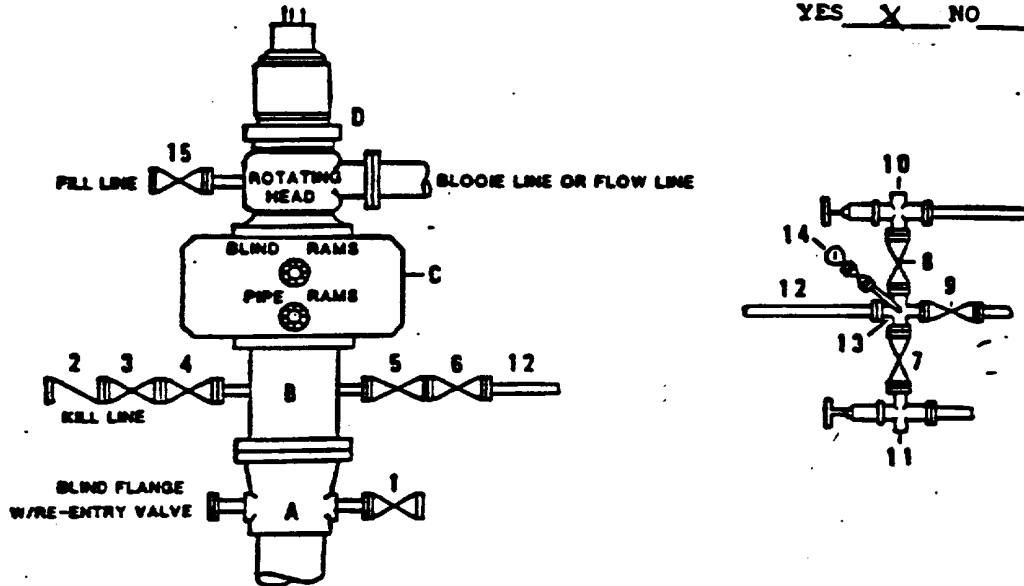
**RECEIVED**

APR 25 1994

**OFFICE**

**DRILLING CONTROL  
CONDITION II-B 3000 WP  
FOR AIR DRILLING OR  
WHERE NITROGEN OR AIR BLOWS ARE EXPECTED**

H<sub>2</sub>S TRIM REQUIRED  
YES X NO     



DRILLING CONTROL

MATERIAL LIST - CONDITION II - B

- A      Texaco Wellhead
- B      3000# W.P. drilling spool with a 2" minimum flanged outlet for kill line and 3" minimum flanged outlet for choke line.
- C      3000# W.P. Dual ram type preventer, hydraulic operated with 1" steel, 3000# W.P. control lines (where sub-structure height is adequate, 2 - 3000# W.P. single ram type preventers may be utilized).
- D      Rotating Head with fill up outlet and extended Baffle Line.
- 1,3,4, 7,8,      2" minimum 3000# W.P. flanged full opening steel gate valve, or Malliburton Lo Torc Plug valve.
- 2      2" minimum 3000# W.P. back pressure valve.
- 5,6,9      3" minimum 3000# W.P. flanged full opening steel gate valve, or Malliburton Lo Torc Plug valve.
- 12      3" minimum schedule 80, Grade "B", seamless line pipe.
- 13      2" minimum x 3" minimum 3000# W.P. flanged cross.
- 10,11      2" minimum 3000# W.P. adjustable choke bodies.
- 14      Cameron Mud Gauge or equivalent ( location optional in choke line).
- 15      2" minimum 3000# W.P. flanged or threaded full opening steel gate valve, or Malliburton Lo Torc Plug valve.



**TEXACO, INC.**  
MIDLAND DIVISION  
MIDLAND, TEXAS



SCALE	DATE	EST. NO.	DRG. NO.
DRAWN BY			
CHECKED BY			
APPROVED BY			

**EXHIBIT C**

RECEIVED

APR 25 1994

OCD HUBBS  
OFFICE

60101267  
long

hb/LI/S  
7-20-94

111