

DISTRICT I

P.O. Box 1980, Hobbs, NM 88241-1980

DISTRICT II

P.O. Box Drawer DD, Artesia, NM 88211-0719

DISTRICT III

1000 Rio Brazos Rd., Aztec, NM 87410

DISTRICT IV

P.O. Box 2088, Santa Fe, NM 87504-2088

State of New Mexico
Energy, Minerals and Natural Resources Department

OIL CONSERVATION DIVISION

P.O. Box 2088
Santa Fe, New Mexico 87504-2088

Form C-101
Revised February 10, 1994
Instructions on back
Submit to Appropriate District Office
State Lease - 6 Copies
Fee Lease - 5 Copies

AMENDED REPORT

APPLICATION FOR PERMIT TO DRILL, RE-ENTER, DEEPEN, PLUGBACK, OR ADD A ZONE

¹ Operator Name and Address TEXACO EXPLORATION & PRODUCTION INC. P.O. Box 3109, Midland Texas 79702		² OGRID Number 022351
		³ API Number 30-025-32943
⁴ Property Code 10960	⁵ Property Name B. F. HARRISON 'B'	⁶ Well No. 26

⁷ Surface Location

Ul or lot no.	Section	Township	Range	Lot.Idn	Feet From The	North/South Line	Feet From The	East/West Line	County
P	5	23-S	37-E		700	SOUTH	500	EAST	LEA

⁸ Proposed Bottom Hole Location If Different From Surface

Ul or lot no.	Section	Township	Range	Lot.Idn	Feet From The	North/South Line	Feet From The	East/West Line	County
⁹ Proposed Pool 1 TEAGUE GLORIETA-UPPER PADDOCK, SOUTHWEST					¹⁰ Proposed Pool 2 NORTH TEAGUE LOWER PADDOCK-BLINEBRY ASSOCIATED				

¹¹ Work Type Code N	¹² Well Type Code O	¹³ Rotary or C.T. ROTARY	¹⁴ Lease Type Code P	¹⁵ Ground Level Elevation 3328'
¹⁶ Multiple Yes	¹⁷ Proposed Depth 6200'	¹⁸ Formation GLORIETA/BLINEBRY	¹⁹ Contractor NABORS	²⁰ Spud Date 6/1/95

²¹ Proposed Casing and Cement Program

SIZE OF HOLE	SIZE OF CASING	WEIGHT PER FOOT	SETTING DEPTH	SACKS OF CEMENT	EST. TOP
12 1/4	9 5/8	36#	1180'	550 SACKS	SURFACE
8 3/4	7	23 & 26#	6200'	750 SACKS	SURFACE

²² Describe the proposed program. If this application is to DEEPEN or PLUG BACK give the data on the present productive zone and proposed new productive zone. Describe the blowout prevention program, if any. Use additional sheets if necessary.

CEMENTING PROGRAM:

SURFACE - 350 SACKS CLASS C w/ 4% GEL (13.5 PPG, 1.74 CF/S, 9.1 GW/S). F/B 200 SACKS CLASS C (14.8 PPG, 1.34 CF/S, 6.3 GW/S).
PRODUCTION - 500 SACKS 35/65 POZ H w/ 6% GEL, 5% SALT, 1/4# FC (12.4 PPG, 2.14 CF/S, 11.9 GW/S). F/B 250 SACKS 50/50 POZ H w/ 2% GEL, 5% SALT, 1/4# FC (14.2 PPG, 1.35 CF/S, 6.3 GW/S).

OXY OPERATES A WELL IN THIS QUARTER QUARTER SECTION AND HAS BEEN FURNISHED A COPY OF THIS APPLICATION.

THIS WILL BE A DUAL COMPLETION. APPLICATION TO DUAL WILL FOLLOW.
Permit Expires 6 Months From Approval
Date Unless Drilling Underway.

²³ I hereby certify that the rules and regulations of the Oil Conservation Division have been complied with and that the information given above is true and complete to the best of my knowledge and belief.

Signature

C. Wade Howard

Printed Name

C. Wade Howard

Title

Eng. Assistant

Date

5/2/95

Telephone

688-4606

OIL CONSERVATION DIVISION

Approved By:

ORIGINAL SIGNED BY JERRY SEXTON

Title:

DISTRICT I SUPERVISOR

Approval Date:

MAY 04 1995

Expiration Date:

Conditions of Approval:

Attached

RECEIVED

MAY 03 1995

U. S. HOBBY
OFFICE

DISTRICT I
P. O. Box 1980, Hobbs, NM 88240

DISTRICT II
P. O. Drawer DD, Artesia, NM 88210

DISTRICT III
1000 Rio Brazos Rd., Aztec, NM 87410

DISTRICT IV
P. O. Box 2088, Santa Fe, NM 87504-2088

State of New Mexico
Energy, Minerals and Natural Resources Department

Form C-102
Revised February 10, 1994

Instructions on back

OIL CONSERVATION DIVISION
PO Box 2088
Santa Fe, NM 87504-2088

Submit to Appropriate District Office

State Lease-4 copies
Fee Lease-3 copies

AMENDED REPORT

WELL LOCATION AND ACREAGE DEDICATION PLAT

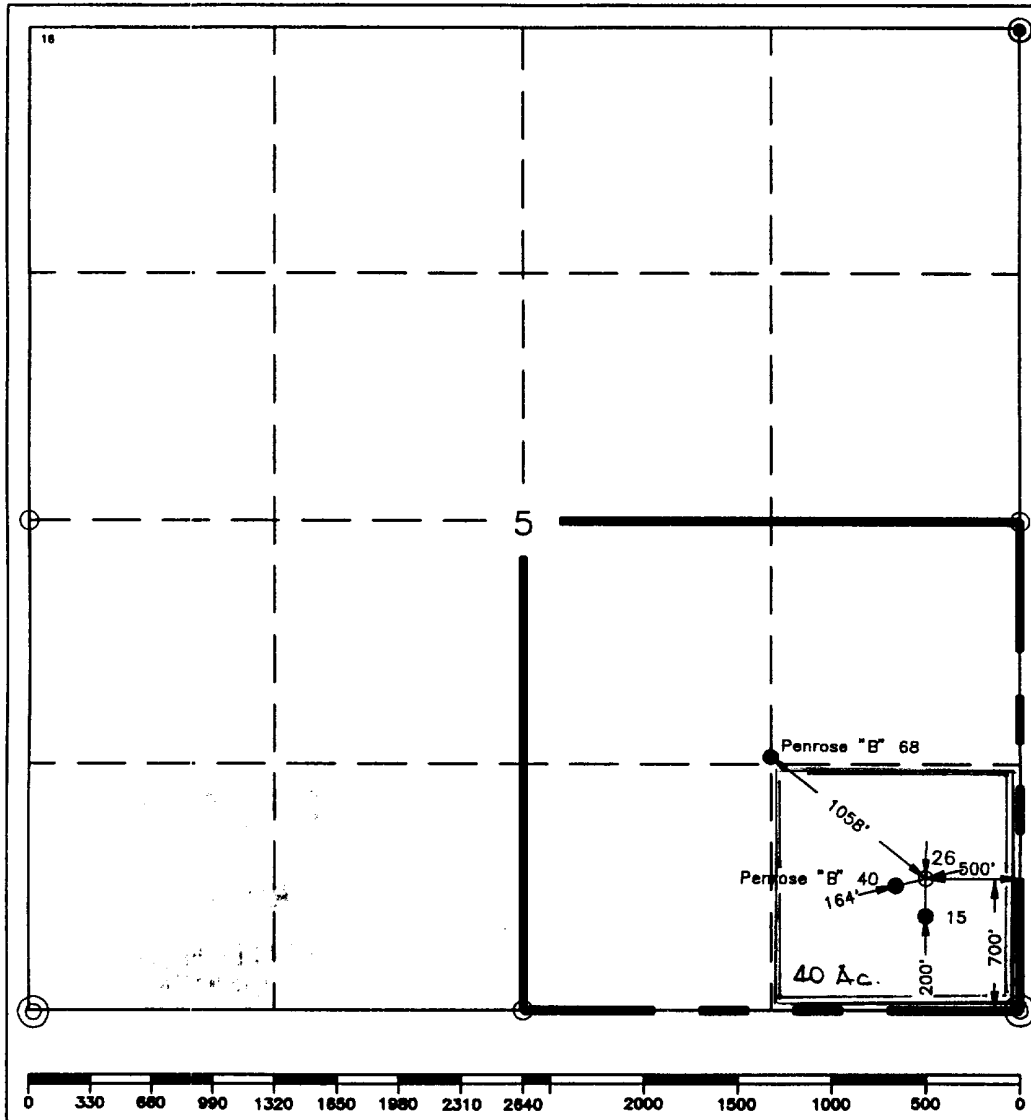
¹ API Number 30-025-32943		² Pool Code 58595/96314		³ Pool Name Teague Glorieta-Upper Paddock, SW; N. Teague Lower Paddock-Blinebry APO	
⁴ Property Code 10960		⁵ Property Name B. F. Harrison "B"		⁶ Well Number 26	
⁷ GRID No. 22351		⁸ Operator Name TEXACO EXPLORATION & PRODUCTION, INC.		⁹ Elevation 3328'	

¹⁰ Surface Location									
UL or lot no.	Section	Township	Range	Lot Idn	Feet from the	North/South line	Feet from the	East/West line	⁷ County
P	5	23-S	37-E		700'	South	500'	East	Lea

¹¹ Bottom Hole Location If Different From Surface									
UL or lot no.	Section	Township	Range	Lot Idn	Feet from the	North/South line	Feet from the	East/West line	⁷ County

¹² Dedicated Acres 40	¹³ Joint or Infill	¹⁴ Consolidation Code	¹⁵ Order No.
-------------------------------------	-------------------------------	----------------------------------	-------------------------

NO ALLOWABLE WILL BE ASSIGNED TO THIS COMPLETION UNTIL ALL INTERESTS HAVE BEEN CONSOLIDATED OR A NON-STANDARD UNIT HAS BEEN APPROVED BY THE DIVISION.



¹⁰ OPERATOR CERTIFICATION	
I hereby certify that the information contained herein is true and complete to the best of my knowledge and belief.	
Signature	<i>C. Wade Howard</i>
Printed Name	C. Wade Howard
Position	Engineer's Assistant
Company	Texaco Expl. & Prod. Inc.
Date	May 2, 1995
¹⁶ SURVEYOR CERTIFICATION	
I hereby certify that the well location shown on this plat was plotted from field notes of actual surveys made by me or under my supervision, and that the same is true and correct to the best of my knowledge and belief.	
Date Surveyed	May 1, 1995
Signature & Seal of Professional Surveyor	<i>John S. Piper</i>
Certificate No.	7254 John S. Piper
Sheet	

○ = Staked Location ● = Producing Well = Injection Well ◊ = Water Supply Well ◆ = Plugged & Abandon Well

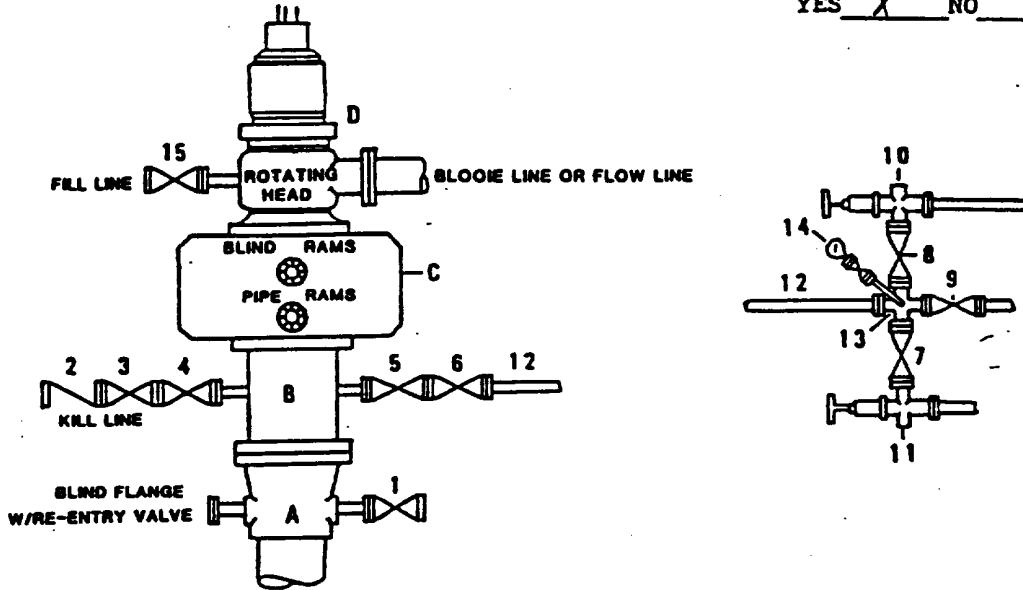
RECEIVED

MAY 03 1965

**U.C.D. HOBBS
OFFICE**

**DRILLING CONTROL
CONDITION II-B 3000 WP
FOR AIR DRILLING OR
WHERE NITROGEN OR AIR BLOWS ARE EXPECTED**

H₂S TRIM REQUIRED
YES A NO



DRILLING CONTROL

MATERIAL LIST - CONDITION II - B

- A Texaco Wellhead
- B 3000# W.P. drilling spool with a 2" minimum flanged outlet for kill line and 3" minimum flanged outlet for choke line.
- C 3000# W.P. Dual ram type preventer, hydraulic operated with 1" steel, 3000# W.P. control lines (where sub-structure height is adequate, 2 - 3000# W.P. single ram type preventers may be utilized).
- D Rotating Head with fill up outlet and extended Bleed Line.
- 1,3,4, 7,8, 2" minimum 3000# W.P. flanged full opening steel gate valve, or Halliburton Lo Torc Plug valve.
- 2 2" minimum 3000# W.P. back pressure valve.
- 5,6,9 1" minimum 3000# W.P. flanged full opening steel gate valve, or Halliburton Lo Torc Plug valve.
- 12 1" minimum schedule 80, Grade "B", seamless line pipe.
- 13 2" minimum x 3" minimum 3000# W.P. flanged cross.
- 10,11 2" minimum 3000# W.P. adjustable choke bodies.
- 14 Cameron Mud Gauge or equivalent (location optional in choke line).
- 15 2" minimum 3000# W.P. flanged or threaded full opening steel gate valve, or Halliburton Lo Torc Plug valve.



TEXACO, INC.
MIDLAND DIVISION
MIDLAND, TEXAS



SCALE	DATE	EST. NO.	DRG. NO.
DRAWN BY			
CHECKED BY			
APPROVED BY			

EXHIBIT C