

**UNITED STATES  
DEPARTMENT OF THE INTERIOR  
BUREAU OF LAND MANAGEMENT**

5. LEASE DESIGNATION AND SERIAL NO.  
**NMLC - 030187**

6. IF INDIAN, ALLOTTEE OR TRIBE NAME

7. UNIT AGREEMENT NAME

8. FARM OR LEASE NAME, WELL NO.  
**C. E. LAMUNYON #64**

9. API WELL NO.  
**30-025-**

10. FIELD AND POOL, OR WILDCAT  
**TEAGUE PADDOCK-BLINEBRY**

11. SEC., T., R., M., OR BLK. AND SURVEY OR AREA  
**SEC. 27, T23S, R37E**

12. COUNTY OR PARRISH  
**LEA**

13. STATE  
**NM**

**APPLICATION FOR PERMIT TO DRILL OR DEEPEN**

a. TYPE OF WORK  
**DRILL  DEEPEN**

b. TYPE OF WELL  
OIL WELL  GAS WELL  OTHER  SINGLE ZONE  MULTIPLE ZONE

2. NAME OF OPERATOR  
**ARCH PETROLEUM INC.**

3. ADDRESS AND TELEPHONE NO.  
**10 DESTA DRIVE, STE. 420E, MIDLAND, TX 79705**

4. LOCATION OF WELL (Report location clearly and in accordance with any State requirements.)\*  
At surface **UNIT C, 50' FNL, 1340' FWL**  
At proposed prod. zone

14. DISTANCE IN MILES AND DIRECTION FROM NEAREST TOWN OR POST OFFICE\*  
**10 1/4 MILES SOUTH OF EUNICE, NM**

15. DISTANCE FROM PROPOSED\* LOCATION TO NEAREST PROPERTY OR LEASE LINE, FT.  
**50'**  
(Also to nearest drlg. unit line, if any)

16. NO. OF ACRES IN LEASE  
**1520**

17. NO. OF ACRES ASSIGNED TO THIS WELL  
**20**

18. DISTANCE FROM PROPOSED LOCATION\* TO NEAREST WELL, DRILLING, COMPLETED, OR APPLIED FOR, ON THIS LEASE, FT.  
**600'**

19. PROPOSED DEPTH  
**6000'**

20. ROTARY OR CABLE TOOLS  
**ROTARY**

21. ELEVATIONS (Show whether DF, RT, GR, ect.)  
**3288'**

22. APPROX. DATE WORK WILL START\*  
**05/15/97**

**PROPOSED CASING AND CEMENTING PROGRAM**

SIZE OF HOLE	GRADE, SIZE OF CASING	WEIGHT PER FOOT	SETTING DEPTH	QUANTITY OF CEMENT
12-1/4"	K-55, 8-5/8"	24#	1075'	600 sx.Cl. 'C' circ.
7-7/8"	J-55, 5-1/2"	15.5#	6000'	1650 sx.Cl. 'C' circ.

Mud Program:

0-1075' FW/Spud Mud 8.8 - 9.0#/gal., 32 visc., 10 pH  
1075 - 5000' BW 10 #/gal., 28 visc., 10 pH  
500-6000' BW/Starch 10 #/ga., 30 visc., 10 pH

OPER. OGRID NO. 962  
PROPERTY NO. 14898  
POOL CODE 58300  
EFF. DATE 5/9/97  
API NO. 30-025-33961

See attached BOP drawing for 3000 psi system.

IN ABOVE SPACE DESCRIBE PROPOSED PROGRAM: If proposal is to deepen, give data on present productive zone and proposed new production zone. If proposal is to drill or deepen directionally, give pertinent data on subsurface locations and measured and true vertical depths. Give blowout preventer program, if any.

24 SIGNED Bahmi Brooks TITLE Production Analyst DATE 3/21/97

(This space for Federal or State office use) PERMIT NO. \_\_\_\_\_ APPROVAL DATE \_\_\_\_\_

Application approval does not warrant or certify that the applicant holds legal or equitable title to those rights in the subject lease which would entitle the applicant to conduct operations thereon. CONDITIONS OF APPROVAL, IF ANY:

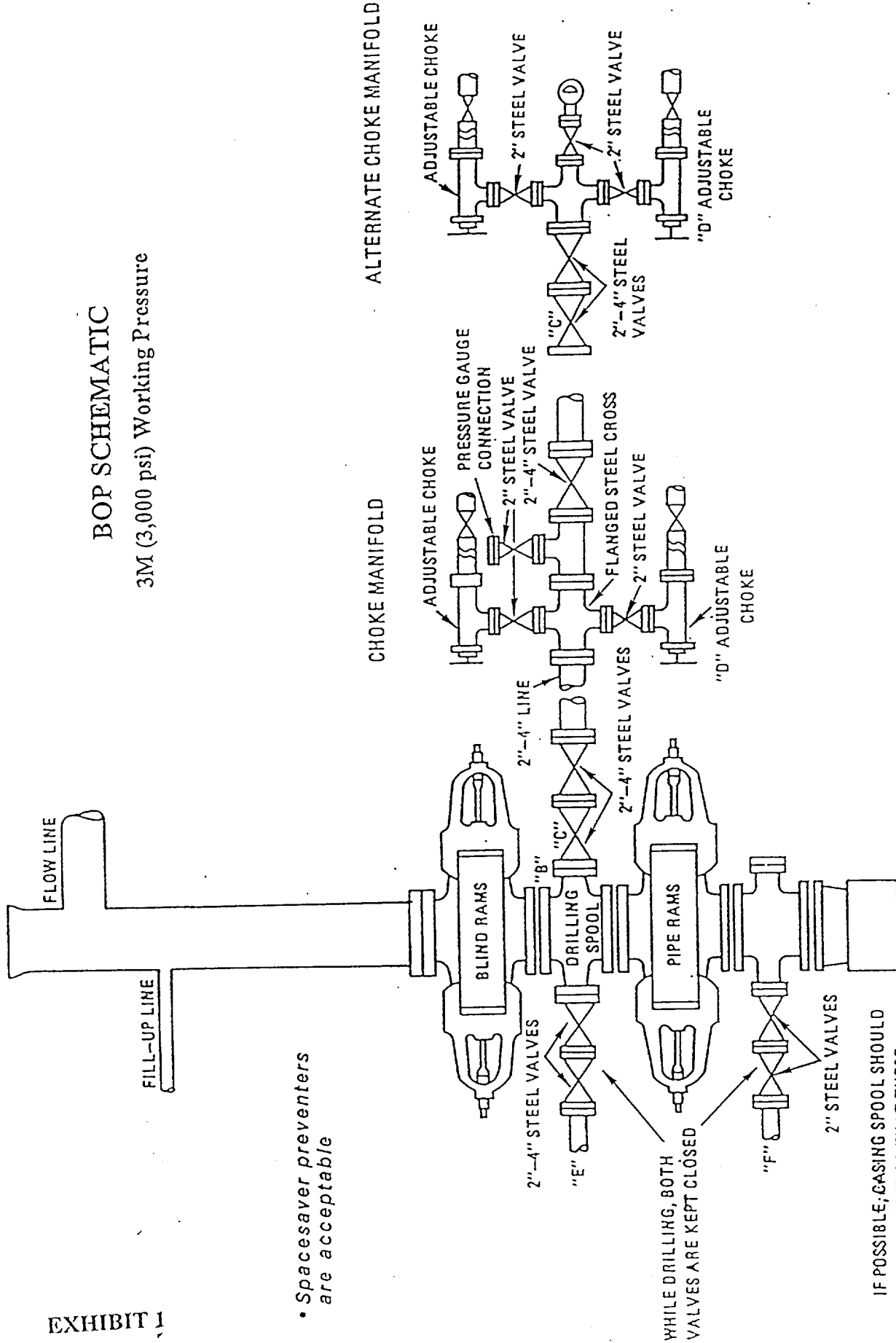
APPROVED BY (ORIG. SGD.) ARMANDO A. LOPEZ TITLE Acting DIR. MINERALS DATE 5-8-97

\*See Instructions On Reverse Side

Title 18 U.S.C. Section 1001, makes it a crime for any person knowingly and willfully to make to any department or agency of the United States any false, fictitious or fraudulent statements or representations as to any matter within its jurisdiction.

BOP SCHEMATIC

3M (3,000 psi) Working Pressure



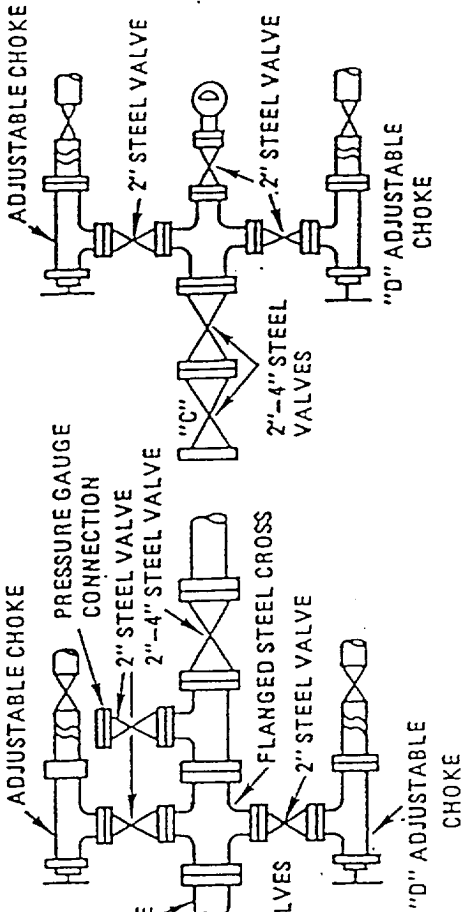
• Spacesaver preventers are acceptable

WHILE DRILLING, BOTH VALVES ARE KEPT CLOSED

IF POSSIBLE, CASING SPOOL SHOULD BE POSITIONED SO THAT THESE VALVES ARE DIRECTLY UNDER THE BARREL OF THE RAM PREVENTER

CHOKES MANIFOLD

ALTERNATE CHOKES MANIFOLD



APR 15 1977  
Received  
Hobbs  
OCD

DISTRICT I  
P.O. Box 1980, Hobbs, NM 88241-1980

State of New Mexico  
Energy, Minerals and Natural Resources Department

Form C-102  
Revised February 10, 1994  
Submit to Appropriate District Office  
State Lease - 4 Copies  
Fee Lease - 3 Copies

DISTRICT II  
P.O. Drawer DD, Artesia, NM 88211-0719

OIL CONSERVATION DIVISION  
P.O. Box 2088  
Santa Fe, New Mexico 87504-2088

DISTRICT III  
1000 Rio Brazos Rd., Aztec, NM 87410

DISTRICT IV  
P.O. BOX 2088, SANTA FE, N.M. 87504-2088

AMENDED REPORT

WELL LOCATION AND ACREAGE DEDICATION PLAT

API Number 30-025-33961	Pool Code 58300	Pool Name TEAGUE PADDOCK-BLINEBRY
Property Code 014898	Property Name C.E. LAMUNYON	Well Number 64
OGRID No. 000962	Operator Name ARCH PETROLEUM INC.	Elevation 3288

Surface Location

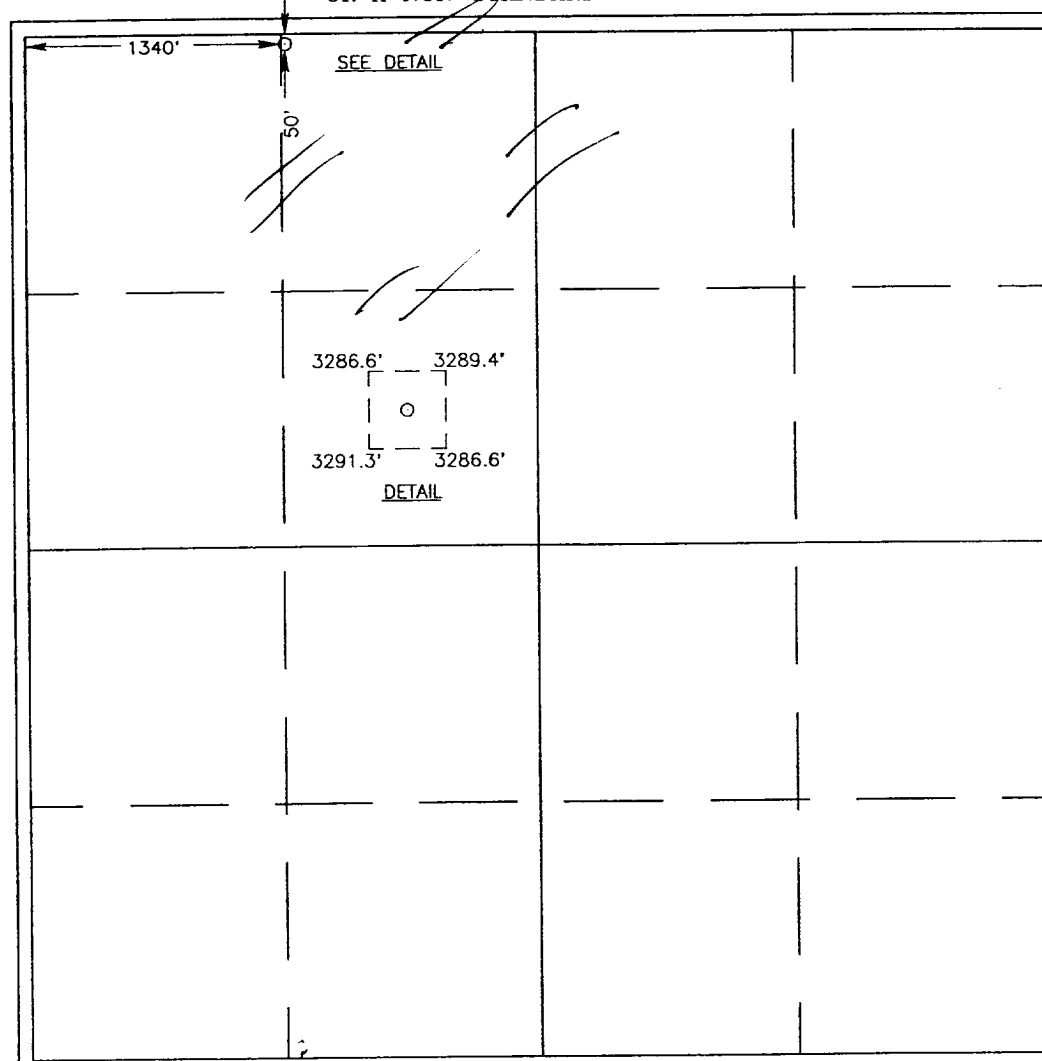
UL or lot No.	Section	Township	Range	Lot Idn	Feet from the	North/South line	Feet from the	East/West line	County
C	27	23 S	37 E		50	NORTH	1340	WEST	LEA

Bottom Hole Location If Different From Surface

UL or lot No.	Section	Township	Range	Lot Idn	Feet from the	North/South line	Feet from the	East/West line	County

Dedicated Acres 20.40	Joint or Infill INFILL	Consolidation Code	Order No. NSL-3793
--------------------------	---------------------------	--------------------	-----------------------

NO ALLOWABLE WILL BE ASSIGNED TO THIS COMPLETION UNTIL ALL INTERESTS HAVE BEEN CONSOLIDATED OR A NON-STANDARD UNIT HAS BEEN APPROVED BY THE DIVISION



**OPERATOR CERTIFICATION**

I hereby certify that the information contained herein is true and complete to the best of my knowledge and belief.

*Bobbie Brooks*  
Signature

BOBBIE BROOKS  
Printed Name

PRODUCTION ANALYST  
Title

4-4-97  
Date

---

**SURVEYOR CERTIFICATION**

I hereby certify that the well location shown on this plat was plotted from field notes of actual surveys made by me or under my supervision, and that the same is true and correct to the best of my belief.

MARCH 13, 1997  
Date Surveyed

DMCC

Signature & Seal of Professional Surveyor  
*Ronald J. Eidson*  
3-18-97

37-11-0478

Certificate No. JOHN W. WEST 676  
RONALD J. EIDSON 3239  
GARON EIDSON 12641

DISTRICT I  
P.O. Box 1980, Hobbs, NM 88241-1980

State of New Mexico

Energy, Minerals and Natural Resources Department

Form C-102  
Revised February 10, 1994  
Submit to Appropriate District Office  
State Lease - 4 Copies  
Fee Lease - 3 Copies

DISTRICT II  
P.O. Drawer DD, Artesia, NM 88211-0719

DISTRICT III  
1000 Rio Brazos Rd., Aztec, NM 87410

OIL CONSERVATION DIVISION

P.O. Box 2088

Santa Fe, New Mexico 87504-2088

DISTRICT IV  
P.O. BOX 2088, SANTA FE, N.M. 87504-2088

AMENDED REPORT

WELL LOCATION AND ACREAGE DEDICATION PLAT

API Number 30-025-	Pool Code 58300	Pool Name TEAGUE PADDOCK-BLINEBRY
Property Code 014898	Property Name C.E. LAMUNYON	Well Number 64
OGRID No. 000962	Operator Name ARCH PETROLEUM INC.	Elevation 3288

Surface Location

UL or lot No.	Section	Township	Range	Lot Idn	Feet from the	North/South line	Feet from the	East/West line	County
C	27	23 S	37 E		50	NORTH	1340	WEST	LEA

Bottom Hole Location If Different From Surface

UL or lot No.	Section	Township	Range	Lot Idn	Feet from the	North/South line	Feet from the	East/West line	County

Dedicated Acres 20	Joint or Infill Infill	Consolidation Code	Order No.
-----------------------	---------------------------	--------------------	-----------

NO ALLOWABLE WILL BE ASSIGNED TO THIS COMPLETION UNTIL ALL INTERESTS HAVE BEEN CONSOLIDATED OR A NON-STANDARD UNIT HAS BEEN APPROVED BY THE DIVISION

**OPERATOR CERTIFICATION**

*I hereby certify the the information contained herein is true and complete to the best of my knowledge and belief.*

Signature  
**BOBBIE BROOKS**

Printed Name  
**BOBBIE BROOKS**

Title  
**PRODUCTION ANALYST**

Date

---

**SURVEYOR CERTIFICATION**

*I hereby certify that the well location shown on this plat was plotted from field notes of actual surveys made by me or under my supervision, and that the same is true and correct to the best of my belief.*

Date Surveyed  
MARCH 13, 1997

Signature of Professional Surveyor  
*Ronald J. Eidson*

Professional Surveyor  
RONALD J. EIDSON  
GARY EIDSON

DMCC

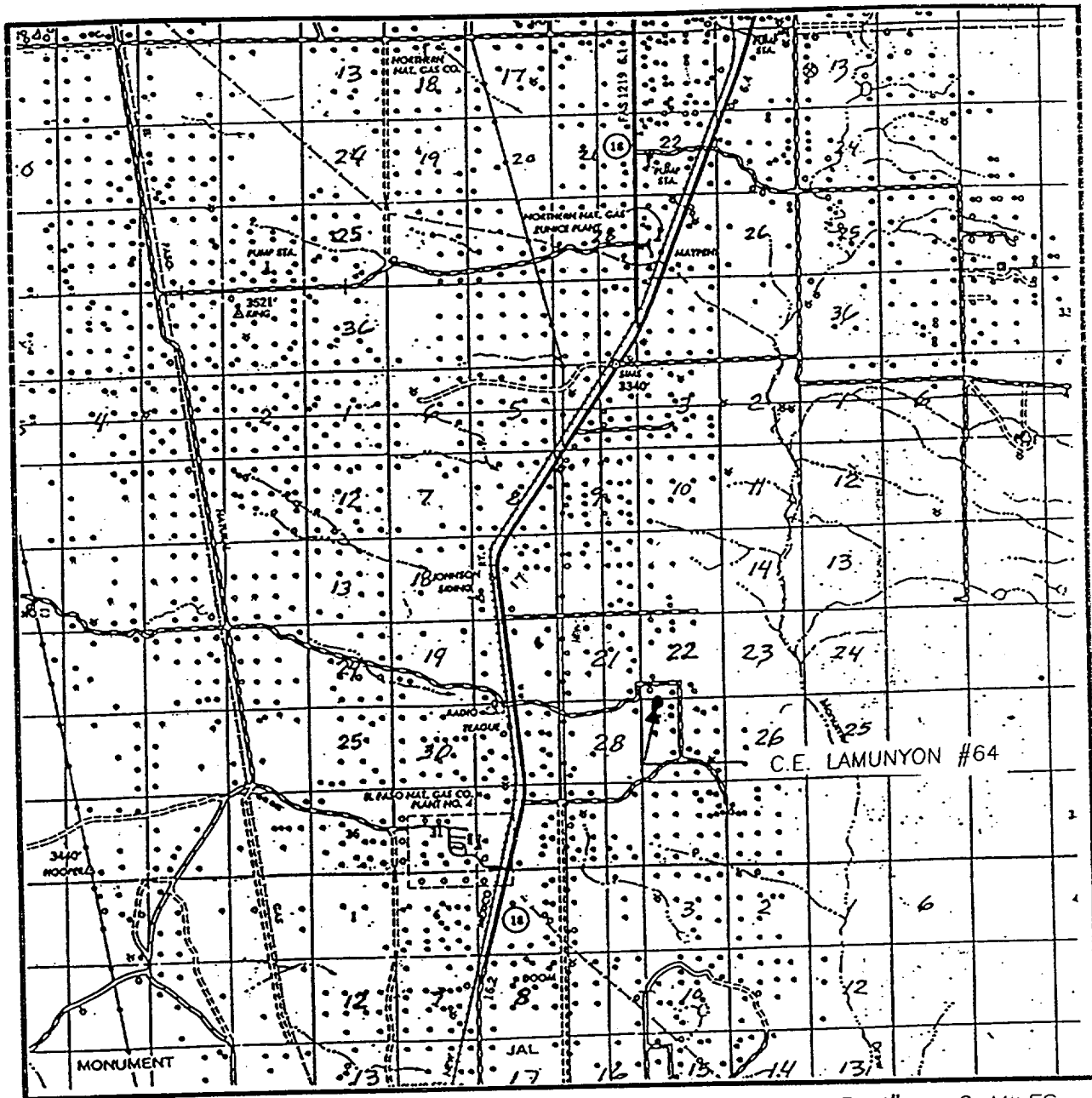
3-20-97

197-11-0578

Certificate No. 676  
RONALD J. EIDSON 3239  
GARY EIDSON 12641

Exhibit No. B

# VICINITY MAP



SCALE: 1" = 2 MILES

SEC. 27 TWP. 23-S RGE. 37-E

SURVEY N.M.P.M.

COUNTY LEA

DESCRIPTION 50' FNL & 1340' FWL

ELEVATION 3288

OPERATOR ARCH PETROLEUM INC.

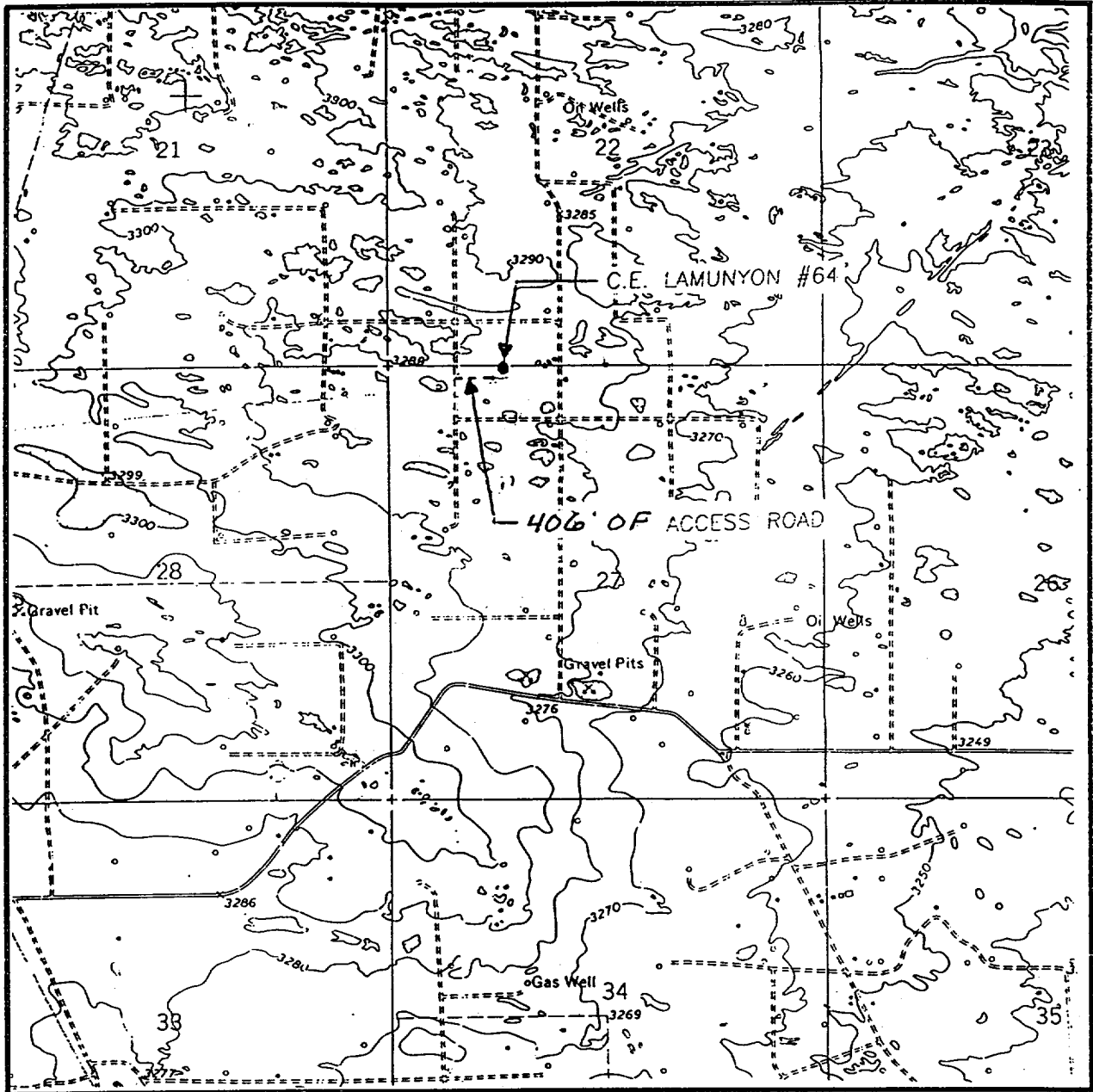
LEASE C.E. LAMUNYON

**JOHN WEST ENGINEERING**  
**HOBBS, NEW MEXICO**  
**(505) 393-3117**

**Exhibit No. C**

2  
MAY 1997  
Received  
Hobbs  
OCD

# LOCATION VERIFICATION MAP



SCALE: 1" = 2000'

CONTOUR INTERVAL:  
RATTLESNAKE CANYON - 10'

SEC. 27 TWP. 23-S RGE. 37-E

SURVEY N.M.P.M.

COUNTY LEA

DESCRIPTION 50' FNL & 1340' FWL

ELEVATION 3288

OPERATOR ARCH PETROLEUM INC.

LEASE C.E. LAMUNYON

U.S.G.S. TOPOGRAPHIC MAP  
RATTLESNAKE CANYON, N.M.

**JOHN WEST ENGINEERING**  
**HOBBS, NEW MEXICO**  
**(505) 393-3117**

**Exhibit No. D**



